

Product datasheet for **MG213044**

Rpl3l (NM_025425) Mouse Tagged ORF Clone

Product data:

Product Type: Expression Plasmids
Product Name: Rpl3l (NM_025425) Mouse Tagged ORF Clone
Tag: TurboGFP
Symbol: Rpl3l
Synonyms: 1110057H16Rik
Mammalian Cell Selection: Neomycin
Vector: pCMV6-AC-GFP (PS100010)
E. coli Selection: Ampicillin (100 ug/mL)
ORF Nucleotide Sequence: >MG213044 representing NM_025425
Red=Cloning site Blue=ORF Green=Tags(s)

TTTTGTAATACGACTCACTATAGGGCGGCCGGAATTCGTCGACTGGATCCGGTACCGAGGAGATCTGCC
GCC**CGATCGCC**

ATGAAGTTGCTGCCCTTTCGGCAGAAGAAGGCCACATCATGGAGATTCAGCTGAACGGTGGCACCCTGG
CTGAGAAGGTGGCTTGGGTTTCAGGCACGGATGGAGAAGCAGGTGCCTGTACACAGCGTGTTCAGCCAGAG
TGAGGTTATTGATGTCATTGCTGTACGAAGGGCCGGGTGTTAAAGGGTGACCAGTCGCTGGCATAACC
AGAAGCTTCCAAGGAAGACCCACAAAGGCTTGCACAAAGTGGCCTGCATCGGCGCTGGCACCCCTGCC
GAGTAGGCTGCTCCATCGCCCGGCTGGCAGAAGGGTTACCACCACCGTACAGAGCTGAACAAGAAGAT
CTACCGCATTGGCCGGGGCTGCACATGGAAGATGGAAAGATGGTCAGAAACAACGCATCCACCAGCTAC
GACGTAACGTACAAGTCAATCACACCCCTGGGTGGCTTCCCCACTATGGGGAAGTGAACAATGACTTCA
TCATGTTAAAGGGCTGCATTGCAGGTACCAAGAAGCGAGTGATCACTCTGAGAAAGTCCCTTCTGGTGCA
CCACAGCCGACAGGGCCCTGGAGAATATTGAGCTCAAGTTCATTGACACCATTCTAAGTTTGGCCACGGA
TGTTTTTCAGACAGCGCAGGAGAAGAGGGCCTTCATGGGTCCCCAAAAGAAACATCTGGAGAAAGAGAAGC
CGGAGACCTTGGGAAACATG

ACGCGTACGCGGCCGCTCGAG - GFP Tag - GTTTAA



[View online »](#)

Protein Sequence: >MG213044 representing NM_025425
 Red=Cloning site Green=Tags(s)

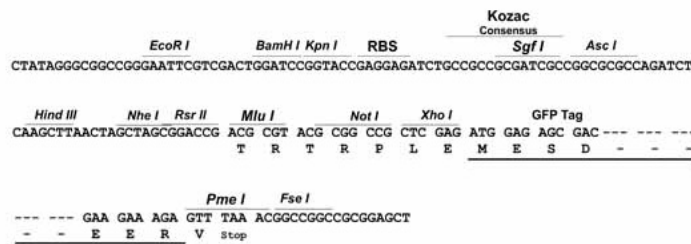
MKLLPFRQKKAHIMEIQLNGGTVAEKVAWVQARMEKQVPVHVSFSQSEVIDVIAVTKGRGVKGVTSRWHT
 KKLPRKTHKGLRKVACIGAWHPARVGC SIARAGQKGYHHRTELNKKIYRIGRGLHMEDGKMVRNNASTSY
 DVTDKSITPLGGFPHYGEVNDFIMLKGCIAGTKKRIVITLRSLLVHHSRRALENIELKFIDTTSKFGHG
 CFQTAQEKRAFMPQKKHLEKEKPETLGNM

TRTRPLE - GFP Tag - V

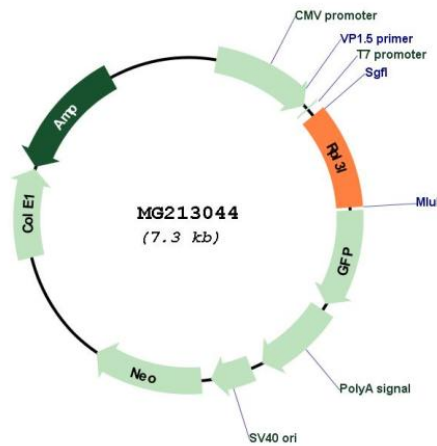
Restriction Sites: SgfI-MluI

Cloning Scheme:

Cloning sites used for ORF Shutting:



Plasmid Map:



ACCN: NM_025425

ORF Size: 720 bp

| | |
|-------------------------------|---|
| OTI Disclaimer: | The molecular sequence of this clone aligns with the gene accession number as a point of reference only. However, individual transcript sequences of the same gene can differ through naturally occurring variations (e.g. polymorphisms), each with its own valid existence. This clone is substantially in agreement with the reference, but a complete review of all prevailing variants is recommended prior to use. More info |
| OTI Annotation: | This clone was engineered to express the complete ORF with an expression tag. Expression varies depending on the nature of the gene. |
| Components: | The ORF clone is ion-exchange column purified and shipped in a 2D barcoded Matrix tube containing 10ug of transfection-ready, dried plasmid DNA (reconstitute with 100 ul of water). |
| Reconstitution Method: | <ol style="list-style-type: none">1. Centrifuge at 5,000xg for 5min.2. Carefully open the tube and add 100ul of sterile water to dissolve the DNA.3. Close the tube and incubate for 10 minutes at room temperature.4. Briefly vortex the tube and then do a quick spin (less than 5000xg) to concentrate the liquid at the bottom.5. Store the suspended plasmid at -20°C. The DNA is stable for at least one year from date of shipping when stored at -20°C. |
| RefSeq: | NM_025425.4 , NP_079701.1 |
| RefSeq Size: | 1065 bp |
| RefSeq ORF: | 723 bp |
| Locus ID: | 66211 |
| Cytogenetics: | 17 A3.3 |