

## Product datasheet for **MG213011**

### 1700013G24Rik (NM\_027063) Mouse Tagged ORF Clone

#### Product data:

**Product Type:** Expression Plasmids  
**Product Name:** 1700013G24Rik (NM\_027063) Mouse Tagged ORF Clone  
**Tag:** TurboGFP  
**Symbol:** 1700013G24Rik  
**Synonyms:** A1507018  
**Mammalian Cell Selection:** Neomycin  
**Vector:** pCMV6-AC-GFP (PS100010)  
**E. coli Selection:** Ampicillin (100 ug/mL)  
**ORF Nucleotide Sequence:** >MG213011 representing NM\_027063  
 Red=Cloning site Blue=ORF Green=Tags(s)

TTTTGTAATACGACTCACTATAGGGCGGCCGGAATTCGTCGACTGGATCCGGTACCGAGGAGATCTGCC  
 GCC**CGATCGCC**

ATGTCTGGACGCCAGGTAAGCCGGTCCAACACTTACAACCACTTGAGCCAACCAACAACGTGTCTTCC  
 CTCCTCGAACTCCAGGCTGGACCCAGTATCCCAATATGAACAACGGCAAGGGTCTGCGAAGCCGCTTCC  
 AAGCGGCTCCGAGTTAAGCACCTCCAGCGGCCAATCTGGCCACTCCGAGCAATCCTTCAACTCCACCACC  
 TCCTCAGAACTTCCCTTGGGAAGATCTGCATGGGCCGCCCTATACCTCAAGTGTGTAGAGACGAGTC  
 ACCTGACGAGAGGCCCAAGGTGGTCAAAAAGCCACCTGTCAACGCAGCAGCCCTCACTGCCTGATCTG  
 CACAGACCAACCATCGTGCCCTCCAGTCTACCTTCTAGACCAGCTCATCAAAGGCATTAGCTACCTG  
 GACAGATCCACCAATGTTTTCAACAACAGCAGCTACCCCAAAGCCCTGAGCTTACCTCAGCTGGCGGCTA  
 CCTATCTGGAAAGAGCTGCTAACTCCCTTACCTGGACCAACGGAACGCCCCCACCCGAAGCTATTC  
 CACTCCCAGCACTAGCACAGCCGCTGCCAATCAGCCCCAGCCAACAACCTGCTTGGTCCCTTCCACTCGG  
 GACACCAAGAGCCTGCAGTGCCTGGGTTCCACTGGTTTGAATATCAACAACGGCCTAACAGCCAGACTT  
 TCAATGTCGAGACACCTCAGAGGCCCGGGTAAAAGTCCAGAGATTCCCTGTTCCGCAACGGGTTCTT  
 CTCCTTAGGTCTGTCGCCAAGTTCTGGGAAGCAATCCGTTCCGGATGGAATGCTCCTGTGCCACCCCT  
 AAGCCCGAGGGCTGGTGG

**ACGCGTACGCGGCCGCTCGAG** - GFP Tag - GTTTAA



[View online »](#)

**Protein Sequence:** >MG213011 representing NM\_027063  
 Red=Cloning site Green=Tags(s)

MSGRQVSRNTYNHLSQPNNVFPPTPGWTQYPNMNNGKGLRSRLPSGSELSTSSGQSGHSEQSFNSTT  
 SSELPLGKICMRPYTSKCVETSHLTRGPKVVKKPTCQRSSPHCLICTDQPSCPSSPTFLDQLIKGISYL  
 DRSTNVFNSSYPKALSLPQLAATYLERAANSLYLDQTERPPRSYSTPSTSTAAANQPPANNCLVPSTR  
 DTKSLQCLGSTGLNYQQRPNSTQTFNVETPQRPGVKLPEIPLFNGGFFSLGRLPKFWEAIRSGWNAPVPTP  
 KPEGWW

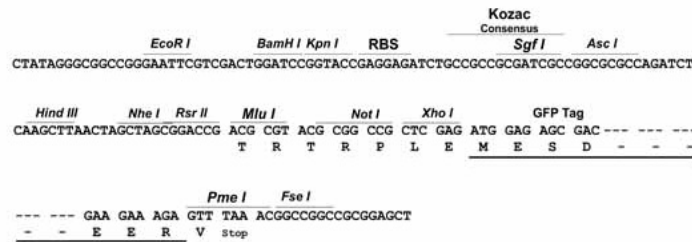
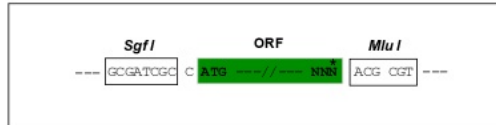
TRTRPLE - GFP Tag - V

**Restriction Sites:**

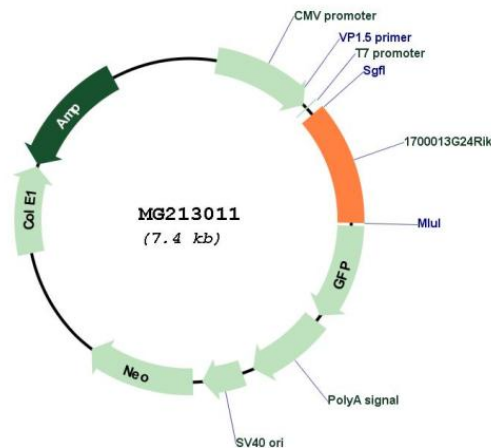
SgfI-MluI

**Cloning Scheme:**

Cloning sites used for ORF Shuttling:



**Plasmid Map:**



**ACCN:** NM\_027063

**ORF Size:** 858 bp

<b>OTI Disclaimer:</b>	The molecular sequence of this clone aligns with the gene accession number as a point of reference only. However, individual transcript sequences of the same gene can differ through naturally occurring variations (e.g. polymorphisms), each with its own valid existence. This clone is substantially in agreement with the reference, but a complete review of all prevailing variants is recommended prior to use. <a href="#">More info</a>
<b>OTI Annotation:</b>	This clone was engineered to express the complete ORF with an expression tag. Expression varies depending on the nature of the gene.
<b>Components:</b>	The ORF clone is ion-exchange column purified and shipped in a 2D barcoded Matrix tube containing 10ug of transfection-ready, dried plasmid DNA (reconstitute with 100 ul of water).
<b>Reconstitution Method:</b>	<ol style="list-style-type: none"><li>1. Centrifuge at 5,000xg for 5min.</li><li>2. Carefully open the tube and add 100ul of sterile water to dissolve the DNA.</li><li>3. Close the tube and incubate for 10 minutes at room temperature.</li><li>4. Briefly vortex the tube and then do a quick spin (less than 5000xg) to concentrate the liquid at the bottom.</li><li>5. Store the suspended plasmid at -20°C. The DNA is stable for at least one year from date of shipping when stored at -20°C.</li></ol>
<b>RefSeq:</b>	<a href="#">NM_027063.2</a> , <a href="#">NP_081339.1</a>
<b>RefSeq Size:</b>	1036 bp
<b>RefSeq ORF:</b>	861 bp
<b>Locus ID:</b>	69380
<b>Cytogenetics:</b>	4 D3