

## Product datasheet for **MG212986**

### Chpf2 (NM\_133913) Mouse Tagged ORF Clone

#### Product data:

Product Type:	Expression Plasmids
Product Name:	Chpf2 (NM_133913) Mouse Tagged ORF Clone
Tag:	TurboGFP
Symbol:	Chpf2
Synonyms:	2010209O12Rik; AW060945; mir-671; mKIAA1402
Mammalian Cell Selection:	Neomycin
Vector:	pCMV6-AC-GFP (PS100010)
E. coli Selection:	Ampicillin (100 ug/mL)



[View online »](#)

ORF Nucleotide  
Sequence:

>MG212986 representing NM\_133913  
 Red=Cloning site Blue=ORF Green=Tags(s)

TTTTGTAATACGACTCACTATAGGGCGGCCGGGAATTCGTCGACTGGATCCGGTACCGAGGAGATCTGCC  
 GCC**CGCATCGCC**

ATGCGACTGAGCTCCCTGCTGGCTCTGCTGCGGCCAGTGCTCCCCCTCATCTAGGACTGTCTCTGGGAT  
 GCAGCCTGAGCCTCCTGCGGGTTTCCTGGATCCAGGGTGAGGGAGAAGATCCCTGTGTAGAGGCTGTGGG  
 GAAGCCAGGAGGGCCACAGAATCCAGACTCAAAAAATGGGCTGGACCAAGGCGATGAAGACTTCAGACCC  
 AGGATTGTGCCTTACTACAGGGATCCTAACAAGCCCTACAAGAAGGTGCTCAGGACTCGGTATATACAGA  
 CAGAGCTGGGCTCTCGTGAAGCCTGCTGGTGGCTGTCTGACTTCTCGAGCCACACTGTCCACCCTGGC  
 CGTCGCGGTTAACCGTACAGTAGCACATCACTTCCCTCGTTACTCTACTTCACAGGGCAGCGAGGGGCC  
 CGGGCTCTGCAGGGATGCAGGTGGTGTCTCATGGAGATGAGCGGCTGCCTGGCTCATGTCAGAGACCC  
 TCGCCACCTTACACACACTTTGGGGCAGACTATGACTGGTTCTTCATCATGCAGGACGACACATATGT  
 GCAGGCCCCAGATTGGCAGCTTGTCTGGTCACTTAGCATCAACCAAGACCTGTACTTAGGCCATGCA  
 GAGGAATTCATTGGTACAGGAGAGCAGGCCCGGTACTGCCATGGGGGCTTTGGCTACCTGTTGTCACGGA  
 GTCTCCTATTGCGCTTGCAGCCACATCTGGATGGCTGCCGAGGGGACATTCTCAGTGCCCGGCTGATGA  
 ATGGCTTGGCCGCTGCCTCATCGACACTCTGGGCATCGGCTGTGTCTCACAGCACCAGGGGCAACAGTAT  
 CGCTCCTTCGAACTGGCCAAGAAATAGGGACCCTGAGAAGGAGGAGAGCCCTGCTTTCCTGAGTGCCTTCG  
 CCGTTCACCCGGTCCCGAGGGCACCCCTCATGTACCGGCTCCACAACCGTTTCAGTGTCTGGAGTTGGA  
 GCGGGCTTACAGCGAAA TAGAACACTGCAGGCCAGATCCGGAACCTGACGGTGTGACCCCTGAGGGG  
 GAGGCAGGGCTAAGCTGGCTGTTGGGCTCCCGGCCCTTCACTCCACACTCTCGCTTCGAGGTGTCTGG  
 GGCTAGCAGGGCAGATGTAGGGGACGCTGTGGACACAGCTCTGGAGCAGCTCAATCGGCGCTATCAGCCC  
 CGCTGCGCTTCCGGAAGCAGCGGCTTCTCAATGGCTACCGGCGCTTTGACCCTGCAAGGGGCATGGAAT  
 ACACCCTCGACTTGTGCTGGAAGCTGTGACTCAGCGAGGGCACAGACGCTCCCTGGCCCGCAGAGTGAG  
 CCTGCTGAGGCCACTGAGCAGAGTGAAATCCTGCCTATGCCCTATGTCACCGAGGCTACCCGGGTGCAA  
 CTGGTGTGCCACTCCTGGTGGCTGAAGCTCCGGCCGCTTGGCTTTTCTTGAGGCTTTGCTGCCAGTG  
 TTCTGGAGCCTCGAGAACATGCATTGCTCACCTGTTGTTGGTCTATGGGCCCGGGAAGGCCGAGGGGG  
 CCCTGACCCATTTCTCGAGTGAAGGCTGCAGCAGCTGAGTTAGAACGACGGTACCCAGGGGCGAGGCTG  
 GCCTGGCTCGCTGTGCGAGCAGAGGCCCTTCGCAGGTGCGACTCATGGATGTCATCTCCAAGAAACACC  
 CTGTGGACACACTCTTCTCCTTACCACCGTGTGGACAAGACCTGGGTCGGAAGTCTCAACCGCTGCCG  
 TATGAATGCAATCTCGGGCTGGCAGGCCTTCTTCCGGTCCACTTTCAGGAGTTCAACCTGCTCTGTCA  
 CCACAGAGATCTCCCCAGGTGTCCCTGGGGCTGATCCCCCTCCCTGGTGTGGACCCTTCTAGGGGGG  
 CTCCGGTCCGGGGCAGATTTGACCGGCAGGCTTCAGCAGAGGGCTGCTTCTACAATGCTGACTACCTGGC  
 AGCCCCGCGCCGGCTGGCTGGCGAAGTGGCAGGCCAGGAAGAGGAGGAAGCCCTGGAGGGGCTGGAGGTG  
 ATGGATGTTTTCTCCGGTTCTCAGGGCTCCACCTTTTCGAGCCGTAGAGCCAGGGCTGGTGCAGAAGT  
 TCTCTGCGGGACTGTAGCCCCGCTCAGCGAGGAAGTGTACCACCGTTGTCGCTCAGCAATCTGGA  
 GGGGCTGGGGCCCGTACCCAGCTAGCCATGGCTCTGTTTGAACAGGAACAGGCCAACAGCACT

**ACGCGT**ACGCGGCCGCTCGAG - GFP Tag - GTTTAA

Protein Sequence: >MG212986 representing NM\_133913  
 Red=Cloning site Green=Tags(s)

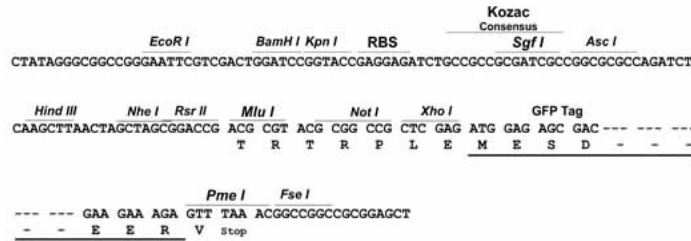
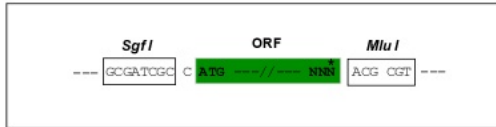
MRLSSLLALLRPVLPILGLSLGCSLSLLRVSWIQGEGEDPCVEAVGKPGGPQNPDSKNGLDQGDEDFRP  
 RIVPYRDPNPKYKVLRTYIQTTELGSRELLVAVLTSRATLSTLAVAVNRTVAHHFPRLLYFTGQGA  
 RAPAGMQVYVSHGDERPAWLMSETLRHLHTHFGADYDWFIMQDDTYVQAPRLAALAGHLSINQDLYLGH  
 EEFIGTGEQARYCHGGFGYLLSRLLLLRLRPHLDGCRGDILSARPDEWLGRCIDITLIGICVYSHQGGQY  
 RSFELAKNRDPEKEEPAFLSAFAVHPVPEGTLMYRLHKRFSALELERAYSEIEQLQAQIRNLTVLTP  
 EAGLSWPVGLPAPFTPHSRFEVLGWDYFTEQHTFACADGAPKCPAQASRADVGDVDTALEQLNRRYQP  
 RLRFRKQRLNNGYRRFDPARGMEYTLDLLLEAVTQRGHRSLARRVSLRPLSRVEILPMPYVTEATRVQ  
 LVLPLLVAEAPAAFLAFAASVLEPREHALLLLL VYGPREGRGGPDPFLGVKAAAAELERRYPGARL  
 AWLAVRAEAPSQVRLMDVISKKHPVDTLFFLTTVWTRPGSEVLNRCRMNAISGWQAFPPVHFQEFNPALS  
 PQRSPGVPADPPSPGVDPSRGAPVGGFRDQASAEGCFYNADYLAARARLAGELAGQEEEEALEGLEV  
 MDVFLRFSGLHLFRAVEPGLVQKFSLRDCSPRLSEELYHRCRLSNLEGLGARTQLAMALFEQEANST

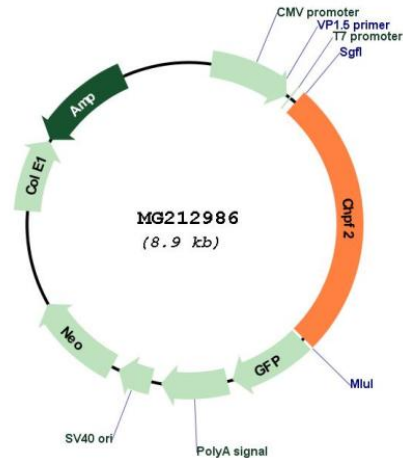
TRTRPLE - GFP Tag - V

Restriction Sites: SgfI-MluI

Cloning Scheme:

Cloning sites used for ORF Shutting:



**Plasmid Map:**


**ACCN:** NM\_133913

**ORF Size:** 2304 bp

**OTI Disclaimer:** The molecular sequence of this clone aligns with the gene accession number as a point of reference only. However, individual transcript sequences of the same gene can differ through naturally occurring variations (e.g. polymorphisms), each with its own valid existence. This clone is substantially in agreement with the reference, but a complete review of all prevailing variants is recommended prior to use. [More info](#)

**OTI Annotation:** This clone was engineered to express the complete ORF with an expression tag. Expression varies depending on the nature of the gene.

**Components:** The ORF clone is ion-exchange column purified and shipped in a 2D barcoded Matrix tube containing 10ug of transfection-ready, dried plasmid DNA (reconstitute with 100 ul of water).

**Reconstitution Method:**

1. Centrifuge at 5,000xg for 5min.
2. Carefully open the tube and add 100ul of sterile water to dissolve the DNA.
3. Close the tube and incubate for 10 minutes at room temperature.
4. Briefly vortex the tube and then do a quick spin (less than 5000xg) to concentrate the liquid at the bottom.
5. Store the suspended plasmid at -20°C. The DNA is stable for at least one year from date of shipping when stored at -20°C.

**RefSeq:** [NM\\_133913.2](#), [NP\\_598674.2](#)

**RefSeq Size:** 3730 bp

**RefSeq ORF:** 2307 bp

**Locus ID:** 100910

Cytogenetics: 5 A3