

## Product datasheet for **MG212953**

### Igsf9b (NM\_001129787) Mouse Tagged ORF Clone

#### Product data:

**Product Type:** Expression Plasmids  
**Product Name:** Igsf9b (NM\_001129787) Mouse Tagged ORF Clone  
**Tag:** TurboGFP  
**Symbol:** Igsf9b  
**Synonyms:** AI414108; AI854107; Gm508; mKIAA1030  
**Mammalian Cell Selection:** Neomycin  
**Vector:** pCMV6-AC-GFP (PS100010)  
**E. coli Selection:** Ampicillin (100 ug/mL)  
**ORF Nucleotide Sequence:** >MG212953 representing NM\_001129787  
 Red=Cloning site Blue=ORF Green=Tags(s)

TTTTGTAATACGACTCACTATAGGGCGGCCGGAATTCGTCGACTGGATCCGGTACCGAGGAGATCTGCC  
 GCC**CGATCGCC**

ATGATTTGGTATGTGGCCACTTTGATAGCAAGTGTGATCAGCACCCGAGGTCTTGTGGCTCAAGTGCCC  
 ACGGCCTGCGAGAGGAACCCGAGTTTGTGACTGCTCGAGCCGGCGAAGGTGTGGTTCTGCGATGCGACGT  
 AATCCACCCAGTGACAGGACAGCCCCACCCTATGTTGTAGAGTGGTTCAAGTTTGGGGTCCCCATCCCT  
 ATCTTCATCAAGTTTGGCTACTATCCCCACATGTGGACCCTGAGTATGCAGGCCGGCCAGTCTTCATG  
 ATAAAGCATCTCTGCGGCTGGAGCAGGTGCGCTCTGAGGACCAGGTTGGTACGAGTGCAAGGTACTCAT  
 GCTGGACCAGCAGTATGACACATTCCACAACGGCAGCTGGGTCCATCTCACCATTAAACGCCCTCCACC  
 TTTACAGAAACACCCCCAGTACATCGAGGCCAAGGAAGGTGGAAGTATTACCATGACGTGTAAGTCTGCT  
 TCGGGAACCCTAAGCCATCGTCACCTGGCTCAAGGAAGGGACCCTCCTCGGTGCTAGTGCAAAATATCA  
 GGTGAGTGACGGTAGCCTAACGGTGACGTGAGTCAAGTGGGAGGACAGAGGCGCCTATACGTGTCGAGCA  
 TATAGCATCCAGGGTGGGCTGTGCACACAACCCATCTGCTTGTCAAGGGCCTCCCTTCATTGTTTCCC  
 CTCCTGAGAACATCACCGTCAACATCTCCAGGATGCTGCTTACCTGCAGGGCAGAGGCGTATCCCGG  
 CAACCTCACCTACACCTGGTACTGGCAGGATGAGAAGTCTACTTCCAGAATGACCTGAAGCTAAGGGTG  
 CGGATCCTGATTGATGGGACACTGATCATCTTCCGAGTGAAGCCAGAGGATGCTGGGAAGTATACCTGTG  
 TCCTAGCAACAGCCTGGGGCGCTCCCCCTCTGCCTCAGCATACCTGACTGTGCAGTACCCAGCCGCTGT  
 CCTCAACATGCCCCCTGTAATTTATGTGCCGTGGGAATCCATGGCTATATCCGCTGTCCTGTGGATGCA  
 GAGCCACCTGCTACTGTGGTGAAGTGAATAAGGATGGCCGGCCCTGCAGGTAGAGAAGAACTGGGTT  
 GGACCTTGATGGAGGATGGCTCTATTGCGATTGAGGAGGCCACAGAGGAGGCTCTTGGCACTTACACCTG  
 TGTGCCTTACAACACCTTGGGACTATGGGCCAGTCTGCCCTGCACGGCTTGTCTGAAGGACCCCCCG  
 TACTTCACGGTGTACCAGGCTGGGAATACAGGCAGGAGGCTGGCCGGGAGCTGCTATTCCCTGTGCAG  
 CTGCAGGGGACCCCTCCCTGTGATCACCTGGAGGAAGGTAGGGAAGCCAGCAGAAGCAAGCACAAACGC  
 ACTGCCAGCGGGAGTCTCCAGTTTCGTGCCCTGAGTAAGGAGGACCACGGGAGTGGGAATGTGTTGCC



[View online >](#)

ACCAATGTGGTCACAAGCATCACTGCCAGCACCCACCTCACTGTCATCGGCACCAGTCCCCATGCCCCAG  
 GCAGTGTCCGGTCCATGTCTCCATGACAACTGCCAACGTGTCTGGGAGCCGGGTATGATGGAGGCTA  
 CGAGCAGACATTTCTAGTTTGGATGAAGCGGGCTCAGTTTGGGCCACGACTGGCTGTCCTTGTCAGTG  
 CCACCGGGCCCCAGCTGGTTGCTGGTAGACAGCCTGGAGCCTGAGACCGCATACCAGTTCAAGTGTCTGG  
 CCCAGAACAGGCTGGGAACCAGCGCCTTCAAGTGGTGGTCACTGTGAACACTTTAGCATTCCCTGTTAC  
 AACTCCAGAACCCTGGTGTGGTAGCCCAACCAAGTGCCTCACAGCCAACCGGACCCAGCAGGGTGTG  
 CTCTGTCTGGCTCCCACCTGCCAACCAAGTTCCTCCATCGACCGCTATATCATGGAGTTCCGAGTTG  
 GGGAGCGCTGGGAGATGCTGGATGACGCCATTCCAGGCACTGACGGAGATTTTTTTGCCAAGGATCTGTC  
 ACAGGATACCTGGTATGAATCCGGGTTTTGGCTGTCATGCAGGATCTGATCAGCGAGCCAGCAACATC  
 GCCGGTGTCTCCAGCACAGACATCTTCCCGCAGCCAGACCTGACCGATGATGGGTGGCCCGCCAGTGT  
 TGGCTGGGATAGTGGCCACCATCTGCTTCTGGCAGCTGCCATCCTTTCCAGCACTCTGGCTGCCTGCTT  
 TGTCAACAAGCAGCGCAAGCGCAAACCTCAAGCGGAAGAAAGATCCTCCGCTCTCCATCACTCACTGTAGG  
 AAGAGTCTTGAGTCTCCCTTGTCTCTGGCAAGGTGAGTCCCAGAGCATCCGCACACTCCGAGCCCGT  
 CTGAATCCTCTGACGACCAGGGCCAGCCTGCGGCCAAGAGGATGCTGAGCCCTACAAGGGAAAAAGAGT  
 GTCCTATACAAAAAACCAAGAGGGCTATCAGCAGCAGGAAGTATAGTGTGGCCAAGGCTGAGGCCGAA  
 GCTGAGGCTACCACCCATTGAACTGATCAGTAGAGGCCGGATGGCCGCTTTGTCATGGGCCCATCGG  
 AGATGGAGCCCTCTGTGAAGGGTCGGCGAATCGAGGGTTCCTCCCTTCGCTGAGGAGACGGACATGTACCC  
 TGAGTTCGGCAGTCAGATGAGGAGAATGAAGACCCACTGGTGCCACGTCTGTGGCTGCTCTGAAGCCT  
 CAGCTGACCCCAATGTCTTCCAGCCAGGACTCTTACCTGCCACCACCAGCATACAGTCTCCGTTCCAGC  
 CTCGTGGGCTCGAGGGCCCGAGCGGACTGGGAGGACGACTCCAGGCTACTGGCCAAGCGAGGCTCCTGC  
 CCCTCGGCCCTTCCAGCACGGCCAGTATTATGGGTACCTCAGCAGCAGCAGCCCTGGGGAAGTGGAGCCT  
 CCACCTTCTATATGCCAGAAGTGGCAGCCCTTGGAGTCTGTGATGTCGTCCCACCCCTGCACACCG  
 AGGGGCTTTTGGCCACCCACCATCCCTGAGGAAAACGGAGAGAATGCTTCTAACAGCACTTTACCCTT  
 GACTCAGACACCTACAGGAGGGCGCTCCCTGAGCCCTGGGGCCGGCCAGAATTTCCCTTTGGGGGACTG  
 GAGACCCAGCTATGATGTTCCCCACCAGCTGCACCCCTGTGATGTGGCCGAGAGTTTGCAGCCCAAGG  
 CCTGCCTGCCCGAGGACTGCCCCAGCCCTCTCCAGGTGCCTGCTGCCTATCCGGGCATGCTATCTCT  
 GGAGGCACCAAGGGCTGGGTAGGCAAGTCACTGGCAGGGGTCCATCCCGGGCCCCCTGCCACCAAG  
 TGGCAGGAAAGACCTATGCAACCTCTGGTCAAGCAAGGGCAGCTAAGACATACCAGCCAAGGTATGGGGA  
 TACCGGTGTTGCCTTACCCGGAGCCAGCCAGCCCGGGGGCATGGTGGCCCCAGCACATTTGGCCTGGA  
 TACCCGGTGGTATGAGCCCCAGCCTCGGCCCGGCCAGCCCCGGCAGGCCCGGCGTGCCGAGCCAGT  
 TTACATCAAGTGGTGTACAGCCCTCTCGGCTCTCACCTCTGACCCAAAGCCCCCTTAGTTCCTCCGACTG  
 GCTCCCTGAGCTCGCTGCTCGTGCCCGACCTCGACCAGGCTCCTGCAGCAGGCAGAGATGTCAGAGAT  
 CACCCTGCAGCCGCCAGCTGCGGTGAGTCTCTCTGAAAGTCAACACCATCATCCACGGGATCTCCTTCG  
 CAGAGCAGCCGAGTGGGAGCCCCAGCTACAGGCCACAATGGGCTTCACTACTCTGGCCACGGGTACC  
 CTTCTCTCCACCTGGCCCTGCCCTCCGGCACCAGGGGACACCTTGGATGTGTTTGGACAGACGCCCTTC  
 CCCTCGGAGGATGGGGGAGGAGCCACTCCGGCCAGAGCCCCAACACCTTACCTACTTCAGGG

ACGCGTACGCGGCCGCTCGAG - GFP Tag - GTTTAA

Protein Sequence: >MG212953 representing NM\_001129787  
 Red=Cloning site Green=Tags(s)

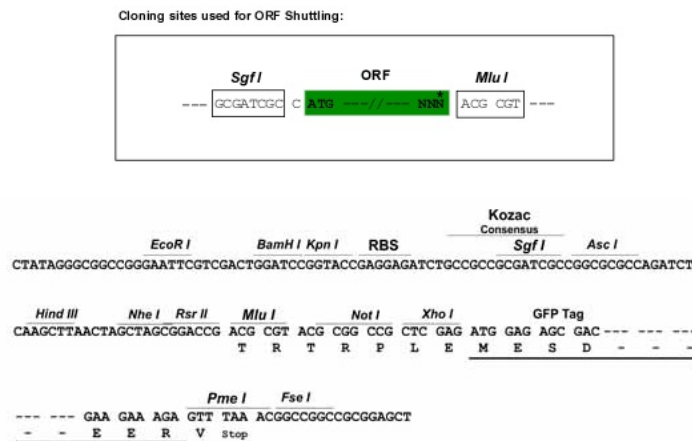
MIWYVATLIASVISTRGLVAQGAHGLREEPEFVTARAGEGVVLRCDVIHPVTGQPPPVVVEWFKFGVPIPI  
 IFIKFGYYPHVDPEYAGRASLHDKASLRLEQVRSEDQGWYECKVLMDDQQYDTFHNGSWVHLTINAPPT  
 FTETPPQYIEAKEGGSITMTCTAFGNPKPIVTLKEGTLGASAKYQVSDGSLTVTSVSRREDRGAYTCRA  
 YSIQGEAVHTTHLLVQGPFFIVSPENITVNISQDALLTCRAEAYPGNLTYTWYQDENVYFQNDLKLRV  
 RILIDGTLIIIFRVKPEDAGKYTCVPSNSLGRSPSASAYLTVQYPARVLNMPPIVYVPVGIHGYIRCPVDA  
 EPPATVVKWVKDGRPLQVEKNLWGLMEDGSIREEATEALGTYTCVPYNTLGTMGQSAPARLVLDKPP  
 YFTVLPGWEYRQEAGRELLIPCAAAGDPFPVITWRKVGKPSRSKHNLPSGSLQFRALSKEDHGEWECVA  
 TNVVTSTITASTHLTVIGTSPHAPGSRVHVSMTTANVSWEPGYDGGYEQTFVWMKRAQFGPHDWLSLSV  
 PPGPSWLLVDSLEPETAYQFVSLAQNRLGTSAFSEVVTVNTLAFPVTTPEPLVLVTPRCLTANRTQQGV  
 LLSWLPANHSFIDRYIMEFRVGERWEMLDDAIPGTDGDFFAKDLSDQTYEFRVLAVMQDLISEPSNI  
 AGVSSDIFPQDLTDDGLARPLAGIVATICFLAAAILFSTLAACFVNKQRKRKLRKDKDPLSITHCR  
 KSLESPLSSGKVSPEIIRLAPSESSDDQGPAAKRMLSPTREKELSLYKTKRAISSRKYSVAKAEAE  
 AEATTPIELISRGPDGRFVMGPMSEMPVKGRRIEGPFPAETDMYPEFRQSDREENEDPLVPTSVAAALKP  
 QLTPMSSSQDSYLPAYSPRFQPRGLEGPSGLGGRLQATGQARPPAPRFQHGQYYGYLSSSSPGEVEP  
 PPFYMEVGSPLSSVMSSPPLHTEGPFHGHTIPEENGENASNSTLPLTQTPTGGRSPEPWGRPEFPFGGL  
 ETPAMMFPHQLHPCDVAESLQPKACLPRGLPPAPLQVPAAYPGMLSLEAPKGVWGKSPGRGPIAPPATK  
 WQERPMQPLVSQGLRHTSQGMGIPVLPYPEPAEPGGHGGPSTFGLDTRWYEPQPRRPSRQARRAEP  
 LHQVVLQPSRLSPLTQSPSSRTGSPELAARARPRPGLLQQAEMSEITLQPPAAVFSRSTPSSTGSPS  
 QSSRSQSPSYRPTMGFTTLATGYPSPPPGAPPAGDGLDVFVGTPTSPRRMGEEPLRPEPPTTLPTSG

TRTRPLE - GFP Tag - V

Chromatograms: [https://cdn.origene.com/chromatograms/ja1732\\_h03.zip](https://cdn.origene.com/chromatograms/ja1732_h03.zip)

Restriction Sites: SgfI-MluI

Cloning Scheme:

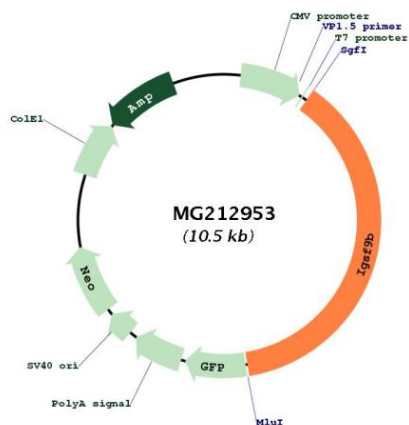


ACCN: NM\_001129787

ORF Size: 3984 bp

<b>OTI Disclaimer:</b>	The molecular sequence of this clone aligns with the gene accession number as a point of reference only. However, individual transcript sequences of the same gene can differ through naturally occurring variations (e.g. polymorphisms), each with its own valid existence. This clone is substantially in agreement with the reference, but a complete review of all prevailing variants is recommended prior to use. <a href="#">More info</a>
<b>OTI Annotation:</b>	This clone was engineered to express the complete ORF with an expression tag. Expression varies depending on the nature of the gene.
<b>Components:</b>	The ORF clone is ion-exchange column purified and shipped in a 2D barcoded Matrix tube containing 10ug of transfection-ready, dried plasmid DNA (reconstitute with 100 ul of water).
<b>Reconstitution Method:</b>	<ol style="list-style-type: none"><li>1. Centrifuge at 5,000xg for 5min.</li><li>2. Carefully open the tube and add 100ul of sterile water to dissolve the DNA.</li><li>3. Close the tube and incubate for 10 minutes at room temperature.</li><li>4. Briefly vortex the tube and then do a quick spin (less than 5000xg) to concentrate the liquid at the bottom.</li><li>5. Store the suspended plasmid at -20°C. The DNA is stable for at least one year from date of shipping when stored at -20°C.</li></ol>
<b>RefSeq:</b>	<a href="#">NM_001129787.1</a> , <a href="#">NP_001123259.1</a>
<b>RefSeq Size:</b>	4239 bp
<b>RefSeq ORF:</b>	3987 bp
<b>Locus ID:</b>	235086
<b>UniProt ID:</b>	<a href="#">E9PZ19</a>
<b>Cytogenetics:</b>	9 A4
<b>Gene Summary:</b>	Transmembrane protein which is abundantly expressed in interneurons, where it may regulate inhibitory synapse development (By similarity). May mediate homophilic cell adhesion (PubMed:23751499).[UniProtKB/Swiss-Prot Function]

Product images:



Circular map for MG212953