

Product datasheet for **MG212947**

Meioc (NM_001127576) Mouse Tagged ORF Clone

Product data:

Product Type:	Expression Plasmids
Product Name:	Meioc (NM_001127576) Mouse Tagged ORF Clone
Tag:	TurboGFP
Symbol:	Meioc
Synonyms:	Gm663; Gm1564
Mammalian Cell Selection:	Neomycin
Vector:	pCMV6-AC-GFP (PS100010)
E. coli Selection:	Ampicillin (100 ug/mL)



[View online »](#)

ORF Nucleotide Sequence:

>MG212947 representing NM_001127576
 Red=Cloning site Blue=ORF Green=Tags(s)

TTTTGTAATACGACTCACTATAGGGCGGCCGGGAATTCGTCGACTGGATCCGGTACCGAGGAGATCTGCC
 GCC**CGCATCGCC**

ATGGAGGTGAGCGCGGAGACACCTGCCGGCCCGTCACCCCAAGGCCTGAGGGAGGGACCTGAGCCGA
 AGGTGGCGGCGCGCGCGGCGTTCCTGGAAGCGCAATCGGTGCTGGAACCTCAGCGTCGACACCAG
 CAATAGATTATCCGACGCTTCAACAGCATGATGCTGACCGGCTCGGCGCCCTTCTATGATTGCTACAAG
 TCTCAGAACAAGACAATGTAGACCTAAGGCAGACCTGCACTCCACTCTCCTCATCAACAGAGTATGCAA
 GTTCTATAGACTCCTCACTCTTCTATGCACCATGGTCTACTTACGGAGACGATATAAACAACCTCCAG
 TTCTCAGATCAGTGAAGAACAGGATTCAGACCGAAAGAAATGACTATGGCAGTGAACAGACTTATAT
 GGACTCGTGTCTAACATTTTGAAGAACAGGATAAGTCGCAGCCATATTTGCTGAAGGGACCTGCTCCT
 CCAACTTAAAGTCAGTTTGGCCAATGAACACAAGCAGATTTGTAGATCACCATGACCTCTTAACAGAACC
 CAAAAGGCCAGTAGATACATCTATCTCAGCAAGCGTTTTATAGTGGTGAATCTGTGTCAGCAGTGAA
 AAGCAATACTTGCAATAATAGTTCTCTCACACCACAGCAAAAAATAGATGAGCTTTATCATGGTTACTG
 GTTTAGACCTTGAAGAACAATGGCTGTACCTTTCAAGAAGTGATCATTCTAACTGTTACAATAGTACGGC
 TAATGATACAGTTAAGGCAACTTTCAAGAATATCCATTTGTCAAAAAGTGTTCACACCACAGACTGGC
 CTGTCTGATATCATGAAAGAATCAGGAATTGATACTTATGCCTATGGAAGAGAGAAAAATGTAATAAG
 GTCTTGAAACACCATTACAGCATAAAAGGGCAGAGATTTTCTTCCCAATTAATAGATATAATGAAAA
 TGCAGATTATTGTAGATATCCAGAATATGCTCATCCTAATAAGGCAAAGCTTAACAAATGTTCAAATTTT
 AGTGTCCAAGATGGTAAAAAGTTAGCCAATGGCACACCTGAGACACCAACTGTGGAAGCAGTGCCTATA
 CGAAGTTATTTCAAGTTAAACCAGCAAAATCAGAAAAAAATGGAGGAGACAATACCTGACCAGCAGAAAT
 TGCATTTCCAAAAACAACACCACATCTGACAGAAAAACAGTTTGCAAAGGAAGCAGCATTCACTGCTGAT
 TTTGGCTTAAATCAGAATATGGACTAAAGCCTCACACAGCTTGCCAATAATAATGATTTTGCTAATG
 TCTCTGAAAAGCAACAGTTTGTAAAGCCTGACCCCTAACTCTGAATATTTAAATCAGTGAATTTATT
 CTCAAATTCAGCAACATCTTCAGGAGGTATCAGTTTAAACAGACCAACTTGGATGAATGTTCAAACAAAA
 AATAACCTTCTATTCTTATCGAAATCAAGGTAACCTTGATGAAATGAATAGTCATTTAAGTGCAGCTT
 CAAAAGGTTCTAACCACTCTTCAGATTTTCCCAACTTTCATCTACAAATTAACCTCAAATAGCAACTT
 ATTTCAGAAGTATGCAAGAAAACCTTCAGCATTCTTAGTTTTGATTTTAGTTACAACGGTGCAGAA
 AGAATTCAGTCTGTGAATCACATGGAAGGACTAACAAAAACCGGAGAAGACAATCTCTTTGAATCAGTTA
 CAGAGAAAAAAATAAAGCAGCAAAATGGATTTTGTGATAGCTATTCAGCTTCACAGTATGGGATAATAGA
 AAATGTAACAACAATAATTTTCAAGCCAAGCCCCAGAGTGGACATTATGATCCTGAGGACATTCAAAAG
 CATTTTGTAGGCTTACCTCAAATACATATCAAGATCTGTTAGAGTCACAGGGTCATTTTAAAGCCACA
 GACAAGGAAGTGGAGACAACAATATTAATAGCCGTGTGAATCGCACACAGGCCTCATGCTTTTCTAATAA
 TTATATGATGGGAGATTTACGACATAATCAGGGTTTTCAACAACCTTGGTTCAAATGGGTTTCCCCTAAGA
 TCTACCCACCTTTGGCCATTCAGTTGTTCCACTGTTGGATTCTATGATTTGTTTTCTTATGATGACT
 TAAGCCATTTATCCTTATTTTAAATGACATGATGTATGGTGATAATTCCTTTTCTGTTTTGTGCCAAC
 TTTTGGATTTCAAAGACCAATTAACCCCGTAGTGGACCAGCTAGTGAAGTTCATATTCGTCTAGAAGAG
 TGCTATGAACAATGGCGAGCATTGGAAAAAGGAGAGAAAAAAGACTGAATTAGCCCTTGCCAAGAATTATC
 CAGGAAAAAAGTATCCAGTACTAATAACTCCAATTCAGACTGACTTCCAACCCATCTAGAGTTGA
 TCGGTTAATTGTGGATGAACTTCGAGAACAAGCCAGAGTTGTGACTTTACTGGGCAAAATGGAACGTCTT
 CGAAGCTCTCCCCTTCTGCTAATATCTCTACTGCTCTTGATAGACACTTGGAGTCAATTCACATTTGTAC
 AGTCACGTAGAAAGGATGAAATTTGTAATGCTTCAAATCGGCAAAGACAAGGAGTGCCTAGGTGCCAAGA
 TGACAGAGATGTGTTGCCCTTGTACAGCAATTAAGAGATGTGTGTAGCTACTCGAAAAGCACGCACT
 ACCCTATGGTGTGCACTGCAGATGACCTTGCCCAAAACAGCAAGTACAGCGGGCCAAGCTGACATGGAAA
 AGGCTTTCCAAGATCTAGTAACTGTGAAGAGAAAGTCCATGAAAGCATAAATAGTACCAATCCAATGAA
 CCAGAGAGGTGAAACAAGTAAACAT

ACGCGTACGCGGCCGCTCGAG - GFP Tag - GTTTAA

Protein Sequence: >MG212947 representing NM_001127576
Red=Cloning site Green=Tags(s)

```
MEVSGGDTCRPRHPQGLREGPEPKVAAAAAIFRGSANRCWNLVSDTSNRLSDVFNSMMLTGSAPFYDCYK
SQNEDNVDLRQTCTPLSSSTEYASSIDSSLFYAPWSTYGDDIKQPPSSQISVKNRIQTERNDYGSSETDLY
GLVSNILEEQDKSQPYFAEGTCSSNLKSVWPMNTRFVDHDDLLETPKRPVDTISIQQAFYSGESVSAVE
KQYLHNSLTPQQKIDELYHGTYGLDLEEQLYLSRSDHSNCYNSQANDTVKATFQEYFPVKNCFTPQTG
LSDIMKESGIDTYAYGREKICTKLETPHQKRAEIFLSQFNRYNENADYCRYPEYAHPNKAKLNKCSNF
SVQDGKLANGTPETPTVEADAYTKLFQVKPANQKMEETIPDQQNFAFPKTTPHLTKQFAKEAAFTAD
FGLKSEYGLKPHTACPTNDFANVSEKQFQAKPDLNSEYFKSVNLFNSATSSGGISLNRPTWMNVQTK
NNLPYPYRQGNLMKLNHLSAASKGSNHSSDFPQLSSTNLTNSNLFQKYCQENPSAFSSFFDFSYNGAE
RISVNHMEGLTKTGEDNLFESVTEKKIKQPNGFCDSSASQYGIENVNKHNFQAKPQSGHYDPEDIPK
HFDGLPQNTYQDLESQGHFNHRQSGDNNINSRVNRTQASCFSNNYMMDLRHNQGFQQLGSNGFPLR
STHPFGHSVPLLDSDYDLFSYDDLSHL YPYFNDMMYGDNSFSGFVPTFGFQRPKIKTRSGPASELHIRLEE
CYEQWRALEKERKKTALAKNYPGKKVSTNNTPIPRLTSNPSRVDRLEIVDELREQARVTTLLGKMERL
RSSPLHANI STALDRHLESIHIVQSRKDEIVNASNRQQRQGVPRCQDDRDVFAALATAIKEMCVATRKART
TLWCALQMTLPKTA TAGQADMEKAFQDLVNCEEKVHESINSSNPMNQRGETSKH
```

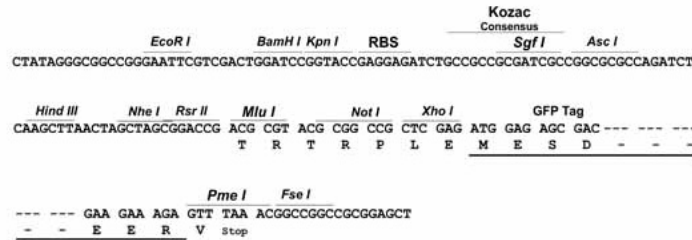
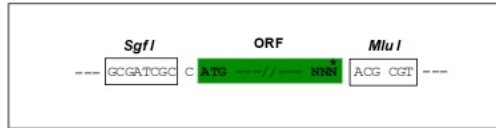
TRTRPLE - GFP Tag - V

Restriction Sites:

SgfI-MluI

Cloning Scheme:

Cloning sites used for ORF Shuttling:

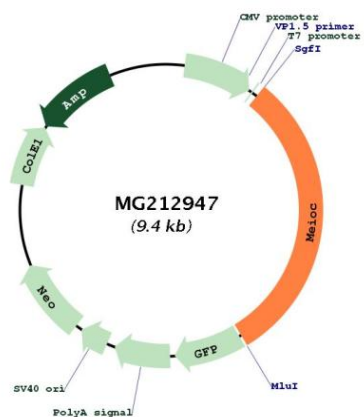


ACCN: NM_001127576

ORF Size: 2895 bp

OTI Disclaimer:	The molecular sequence of this clone aligns with the gene accession number as a point of reference only. However, individual transcript sequences of the same gene can differ through naturally occurring variations (e.g. polymorphisms), each with its own valid existence. This clone is substantially in agreement with the reference, but a complete review of all prevailing variants is recommended prior to use. More info
OTI Annotation:	This clone was engineered to express the complete ORF with an expression tag. Expression varies depending on the nature of the gene.
Components:	The ORF clone is ion-exchange column purified and shipped in a 2D barcoded Matrix tube containing 10ug of transfection-ready, dried plasmid DNA (reconstitute with 100 ul of water).
Reconstitution Method:	<ol style="list-style-type: none">1. Centrifuge at 5,000xg for 5min.2. Carefully open the tube and add 100ul of sterile water to dissolve the DNA.3. Close the tube and incubate for 10 minutes at room temperature.4. Briefly vortex the tube and then do a quick spin (less than 5000xg) to concentrate the liquid at the bottom.5. Store the suspended plasmid at -20°C. The DNA is stable for at least one year from date of shipping when stored at -20°C.
RefSeq:	NM_001127576.2 , NP_001121048.1
RefSeq Size:	4573 bp
RefSeq ORF:	2898 bp
Locus ID:	268491
UniProt ID:	A2AG06
Cytogenetics:	11 E1
Gene Summary:	Is required for meiosis completion in both male and female germ cells. Confers stability to numerous meiotic mRNAs in gonads allowing proper initiation and progression into meiosis prophase I. The function may involve YTHDC2 and is independent of induction by retinoic acid (RA). Maintains an extended meiotic prophase I by properly promoting the transition from a mitotic to a meiotic cell cycle program by binding transcripts through its interaction with YTHDC2 that regulate the mitotic cell cycle (PubMed:28380054).[UniProtKB/Swiss-Prot Function]

Product images:



Circular map for MG212947