

Product datasheet for **MG212860**

Cdh18 (NM_001081299) Mouse Tagged ORF Clone

Product data:

Product Type:	Expression Plasmids
Product Name:	Cdh18 (NM_001081299) Mouse Tagged ORF Clone
Tag:	TurboGFP
Symbol:	Cdh18
Synonyms:	B230220E17Rik; Cdh14l
Mammalian Cell Selection:	Neomycin
Vector:	pCMV6-AC-GFP (PS100010)
E. coli Selection:	Ampicillin (100 ug/mL)



[View online »](#)

ORF Nucleotide Sequence:

>MG212860 representing NM_001081299
 Red=Cloning site Blue=ORF Green=Tags(s)

TTTTGTAATACGACTCACTATAGGGCGGCCGGGAATTCGTCGACTGGATCCGGTACCGAGGAGATCTGCC
 GCC**CGGATCGCC**

ATGAGAATTACGAGCACATCTTGCATCTGTCCAGTCTCGTGTCTCTGTTTTGTGCAGAGGTGTATG
 GAACTGCTCACCACAGCTCCATTAAGGTGACCAGAAACCAAAACAAACACTGAAGGGGAACTGAAGT
 ACACCATCGTCCCAAGAGGGGATGGGTATGGAACCAAGTCTTTGTTTTAGAAGAACATATGGACCAGAC
 CCACAGATGTTGGAAAAGTGCCTCAACTCCGACAAAGGTGATGGTCTGTCAAGTACATCCTGACTG
 GAGAAGGGGCCGGGACTATATTTATCATTGATGACACCACAGGTGACATCCACTCAACAAAAGCCTGGA
 CAGAGAGCAGAAGACTCACTATGTGCTCCATGCCAGGCTATTGACAGACGGACAAACAAGCCTCTTGA
 CCTGAGTCTGAGTTCATCATCAAAGTCAAGATATTAATGACAATGCCCCAAAGTTCACAGATGGACCAT
 ACATCGTTACTGTGCCTGAAATGTCAGATATGGGTACCTCTGTTCTGCAGGTGACAGCTACAGATGCAGA
 TGACCCACCTATGGGAACAGTGTCTGAGTTGTTACAGTATCCTGCAAGGACAACCTTATTTCTCTGTA
 GATCCTAAAACAGGAGTCAATCGAACAGCTTTACACAACATGGATAGAGAAGCCAGAGAGCATTACTCAG
 TGGTCATTCAAGCCAAAGACATGGCTGGCAAGTTGGCGGACTTCTGGATCCACCACTGTCAATATTAC
 CTTGACTGATGTCAATGACAACCCACCAGGTTCCACAGAAACACTATCAACTGTATGTTCTGAGTCT
 GCTCAAGTTGGTTCAGCTGTTGGGAAAACAAAGCAAAATGATGCAGACACAGGATCAAAATGCAGATATGA
 CCTACTCCATCACTAATGGAGACGGGATGGAGTGTCTCTATCTCCACGGACAAGGACACCAGAGAAGG
 AACTTTTCTTAAAAAGCCACTGAACTATGAGAAAAAGAGTCTTACACACTCAACATTGAAGGAGCA
 AACACACATCTGGATTTCCGTTTTTCCCACTTGGTCCATTTAAGGATGCCACCATGCTGAAGGTTATTG
 TTGGGGATGTGGATGAGCCACCCTCTTTCTATGCCTTCCTATGTCATGGAAGTCTATGAAAATGCCAA
 GATTGGGACAATTGTTGGCACTGTCTGGCTCAGGATCCAGACAGTGTCTAACAGCTTAGTAAGGTATTTT
 ATCAATCACAGTACTGAAGAGGAGAGATTTTTCAATATTGATGCCAATACTGGAACCATTAAGACATCAA
 AAGTACTGGATAGAGAAGAAACACCATGGTACAATATCACAGTACTGCTTCAGAAAACGACAATCCTGA
 TTTGCTGAGCCATGTCTCCGTGGGTATTAGAGTCTGGATGTCAATGACAATCCACCTGAACTTGCCAGG
 GAATATGATATTGTTGTCTGTGAGAATTCTAAGCCTGGTCAGGTTATCCACACCATCACTGCCACTGATA
 AAGATGACTTTGCCAATGGACCGAGATTTCATTTTTTTCTTGATGAGCGCCTGCCATGAACCCAAATTT
 CACACTTAAGGACAATGAAGATAACACAGCCAGCATTCTGACAAGCGGAGGAGATTTAGTCGAACTATG
 CAGGATGTGATTTATCTGCCATTATGATCTCTGACGGTGAATCCCCTCTCTCAGCAGCAGCAGCACCC
 TCACCATCAGGGTTTGTGATGCGAGAGAGATGGGCGCGTGCGGACCTGCCATGCAGAAGCCTTCTGTG
 CTCCGCTGGTTTGTGACACAGGAGCCCTAATCGCTATTCTTCTCTGTGTTGTCATTCTTCTGCCATTGTG
 GTCCTTTTTATCACCTTGAGGCGTGGCAAAAAGAGCCCTTGATCATTTCGAGGAGGATGTGCGAGAGA
 ATGTGGTGACATATGATGACGAGGGAGGAGGGGAGGAAGACCCGAAGCCTTCGACATCACAGCTTTGCG
 GAATCCTGCCGACGAGAGGAGTTACGTACCCGACAGACATTCCGGCCTGAAGTGAAGCTCACTCCGAGA
 CATCAGACCTTGCCACCCTGGAGAGCATAGACGTTCCAGGAGTTATTAAGCAAAGACTCGCAGAAGCCG
 ACCTGGACCCAGCGTGCCCTTATGACTCTCTCAGACTTATGCCTACGAGGGCCAGCGGTGAGAAGC
 TGGGCTATCAGCTCACTGGACTCCGCAACCACGCAATCAGACCAGGATTACTACTACCTTGGAGACTGG
 GGGCCCGAGTTTAAGAAGTTAGCTGAACTCTATGGAGAAATAGAATCTGAAAGAACAAC

ACGCGTACGCGGCCGCTCGAG - GFP Tag - GTTTAA

Protein Sequence: >MG212860 representing NM_001081299
 Red=Cloning site Green=Tags(s)

```

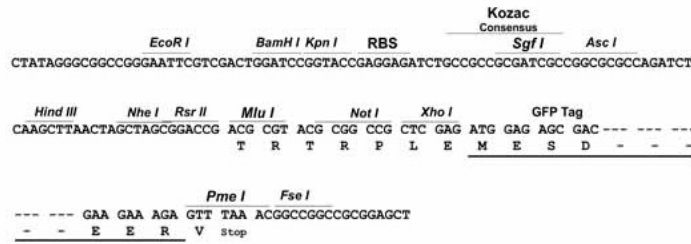
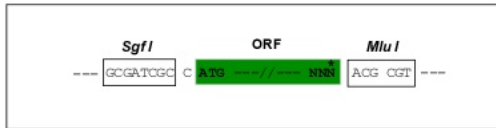
MRITSTSCICPVLVCLCFVQRCYGAHSSSIKVTNRNQTKHTEGETEVHHRPKRGWVWNQFFVLEEHPGD
PQYVYVGLHSNSDKGDGSKYIILTGEGAGTIFIIDDTTGDIHSTKSLDREQKTHYVLAQAIDRRNTKPLE
PESEFIIKVDINDNAPKFTDGPYIVTVPEMSDMGTSVLQVTATDADDPTYGNSARVVYSILQGGPYFSV
DPKTGVIRTUALHNMDREAREHYSVVIQAKDMAGQVGGVSGSTTVNITLTDVNDNPPRFPQKHQYL VVPES
AQVGSVAVGKIKANDADTGSNADMTYSITNGDGIQVFSISTDKDTREGILSLKKPLNYEKKKSYTLNIEGA
NTHLDFRFVSHLGPFKDATMLKVI VGDVDEPPLFSMPYVMEVYENAKIGTIVGTVLAQDPDSANSLVRYF
INHSTEEERFFNIDANTGTIKTSKVL DREETPWYNITVTASENDNPDLLSHVSVGIRVLDVNDNPPELAR
EYDIVVCENSKPGQVIHTITATDKDDFANGPRFHFFLDERLPMNPFTLKDNDNTASILTRRRRF SRMT
QDVYYLPIMISDGGIPSLSSSSTLTIRVCACERDGRVRTCHAEAFSSAGLSTGALIAILLCVVILLAIIV
VLFITLRRGKKEPLIISEEDVRENVVTVYDEGGGEEDTEAFDITALRNPAAAEEFTYRRDIRPEVKLTPR
HQTLSLLESIDVQEFIKQRLAEADLDPSVPPYDSLQTYAYEGQRSEAGSISLSDSATTQSDQDYHYLGDW
GPEFKKLAELYGEIESERTT
    
```

TRTRPLE - GFP Tag - V

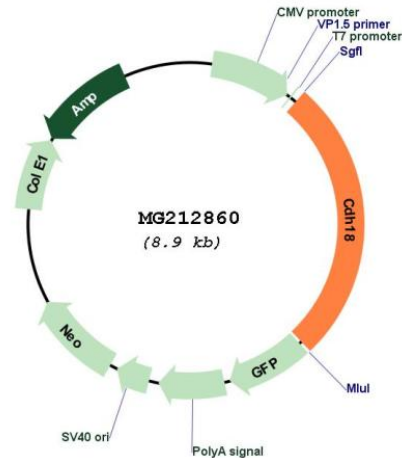
Restriction Sites: SgfI-MluI

Cloning Scheme:

Cloning sites used for ORF Shuttling:



Plasmid Map:



ACCN: NM_001081299

ORF Size: 2370 bp

OTI Disclaimer: Due to the inherent nature of this plasmid, standard methods to replicate additional amounts of DNA in *E. coli* are highly likely to result in mutations and/or rearrangements. Therefore, OriGene does not guarantee the capability to replicate this plasmid DNA. Additional amounts of DNA can be purchased from OriGene with batch-specific, full-sequence verification at a reduced cost. Please contact our customer care team at custsupport@origene.com or by calling 301.340.3188 option 3 for pricing and delivery.

The molecular sequence of this clone aligns with the gene accession number as a point of reference only. However, individual transcript sequences of the same gene can differ through naturally occurring variations (e.g. polymorphisms), each with its own valid existence. This clone is substantially in agreement with the reference, but a complete review of all prevailing variants is recommended prior to use. [More info](#)

OTI Annotation: This clone was engineered to express the complete ORF with an expression tag. Expression varies depending on the nature of the gene.

Components: The ORF clone is ion-exchange column purified and shipped in a 2D barcoded Matrix tube containing 10ug of transfection-ready, dried plasmid DNA (reconstitute with 100 ul of water).

Reconstitution Method:

1. Centrifuge at 5,000xg for 5min.
2. Carefully open the tube and add 100ul of sterile water to dissolve the DNA.
3. Close the tube and incubate for 10 minutes at room temperature.
4. Briefly vortex the tube and then do a quick spin (less than 5000xg) to concentrate the liquid at the bottom.
5. Store the suspended plasmid at -20°C. The DNA is stable for at least one year from date of shipping when stored at -20°C.

RefSeq: NM_001081299.1, NP_001074768.1
RefSeq Size: 2744 bp
RefSeq ORF: 2373 bp
Locus ID: 320865
Cytogenetics: 15 A2