

Product datasheet for **MG212841**

Fam169a (NM_001146045) Mouse Tagged ORF Clone

Product data:

Product Type:	Expression Plasmids
Product Name:	Fam169a (NM_001146045) Mouse Tagged ORF Clone
Tag:	TurboGFP
Symbol:	Fam169a
Synonyms:	B230112C05Rik; SLAP75
Mammalian Cell Selection:	Neomycin
Vector:	pCMV6-AC-GFP (PS100010)
E. coli Selection:	Ampicillin (100 ug/mL)



[View online »](#)

ORF Nucleotide
Sequence:

>MG212841 representing NM_001146045
Red=Cloning site Blue=ORF Green=Tags(s)

TTTTGTAATACGACTCACTATAGGGCGGCCGGAATTCGTCGACTGGATCCGGTACCGAGGAGATCTGCC
GCCCGCATCGCC

ATGGCATTCCCTGTGGATTTGCTGGATAACTGCACGCATGAGGAATTGGAAAACCTTTCTGAGGATTACC
TCTCCAGCCTAAGGTGTGGGGACCCTGAACATCCAGAGTGCTTTTCTAGTCTCAACATTACGATTCCCGT
TAGTCTGTCAAATGTGGGCTTTGTCCCTCTCTATGGCGGCAATCAGACACAGAAAATTTTGCTCTCTTT
GCGCCTGAAGATTCTCTTACAGCTGTGGCACTTTACCTTGTGGTGTGAGTGGTGGGCCATTGATGATTTG
TGAAAACCTCTGAACCTTCTAGAGAGGGCTGAAGCAGGTGAGCACTCTTGGAGAGAGAGTGGTTCTGTA
TGTTCTCAATCGGATTATTTATAGAAAGCAGGAAATGGAGAGAAATGAGATCCCATTCTTGTGCCATAGC
AGTACTGACTATGCTAAGATTCTGTGGAAGAAAGGAGAGGCCGTTGGGTTTTATTCAGTTAAGCCTACAG
GAAGCTTATGTGCCTCATTTCTTACTCAGAATTACCAACTGCCAGTTCCTGATACAATGTTTATAAGGAA
GAAATACAGAGGAAAAGATTTGGGGCTTCATATGCTGGAAGATTTTGTGATTCTTTACAGAAGATGCA
CTTGGCTTACGGTACCCACTGTCTCTCTCATGTACACAGCTTCCAAGCAATACTTTGAAAAGTATCCAG
GAGATCATGAACCTCTTTGGGAAGTTGAAGGTGTGGGTCAATTGGCATCAGCGAGTACCAGTACCCCGAGC
ATTGCAGAGAGAGGCTATTAAGCTACAGATGTTTCTCAATATGAAGCCACAAGACCTGTGTCTGGAGAA
TATGGTCTTGCTGCTGTACCAGAACATGAACCTGGACTGGACGACACTCAGTCTAGTGAGCTGCAGATCC
ATTCCTAAAAGATGCCTTTGCTAGCACTTCTGAAGGTCCAGAAAAGACTCCTGTTTCCACGCGTACTCG
GAGCAGCCATCTAAAGCGGCCAAAGATTGGGAAGCATTTCAGGATTCTGAGTTTAGTATTCTCAAGGT
GAAGATGAAAACGTTGCCAAGACTTCACCTACGGCTTCAGTAAACAAAATAGAGTATGCTGCACGAACAT
CAGAGAGCTCAGAAGAATTCCTTGAAGAAGAGCCTGAGCAGGGAGTGATTGACTTTGAGGATGAAAGCGG
TGATAAAGATGCACAGCCTGCTCTGAAAACCTCAGCCACGCTGCAGAAAACAAGATGGGGACAAGGACTCT
CGGTTAGAGCCTGTGAATGGGGAGTAATGGATGCTGCCCTCAAGCCCTCTTTACAACCTGAAGACGAGG
ACTCCACCAGTGAGGGTCTTGAAGAAGACTTAAAGGTTCCACCTTTTAATTCCAGCGGAGAACCTGGAAA
TCCTGTTCCACTAGTAGCAGAGTCTTCAAAGTGCCCGAGGCCACATTAGCTAAGACCTCACCTGATACT
GACTCAGAAATGTTGATCGATCAAAGCCCATCTGATGATAAAGGACATACTGAAGAAAATCTGTCCCAG
TTTCAAAAAGAAAACACTTTTGGGGAGCTCAGACAATGTTGCCACTGTATCAAATATAGAAAAGTCTGA
TGGAATTTTCCAATTCTGTGGTACCAGAATTTCCCGAAGAACCAGTCTCTCAGAATTTATCACCCAAC
ACTACTTCTCAGTGAAGACCAGGGTGTAGGAGGGAGCACCTGAGGCCAGGAACCATCGGCTACTCAGA
GTTCTCTGATAGAGGTAGAAGTTGAAGACGCGCCATTTCCACAGAATGCAGGACAGAAGGCCAGTCAGA
GGAACAGTCTGAAGCGTCTCTGAGCACCTGGAACAGTTTACACAGTCAGCAGAGAAAGGTGTGGATAGC
AGCTCAGAGGAGATTGAAGTGAAGTTCCTGTAGTAGACAGGCGCAATCTGAGAAGAAAGGCCAAAGGGC
ATAAGGGCCCTGGCAAGAAGAAAGCCAAGCTGACC

AGCGGACCGACGCGTACGCGGCCGCTCGAG - GFP Tag - GTTTAA

Protein Sequence: >MG212841 representing NM_001146045
Red=Cloning site Green=Tags(s)

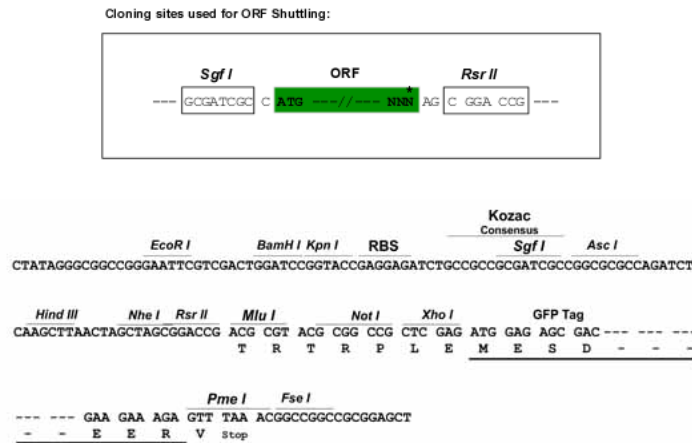
```
MAFPVDLLDNCTHEELENSSDYLSLRCGDPEHPECFSSLNITIPVLSNVGFVPLYGGNQTKILALF
APEDSLTAVALYLVGQWVAIDDIIVKTSEPSREGLKQVSTLGERVLYVLNRIIYRKQEMERNEIPFLCHS
STDYAKILWKKGEAVGFYSVKPTGSLCASFLTQNYQLPVLDTMFIRKKYRGKDLGLHMLEDFVDSFTEDA
LGLRYPLSSLMYTASKQYFEKYPGDHELLWEVEGVGHWHQRPVPTRALQREAIKATDVSYQYATRPVSGE
YGLAAVPEHEPGLDDTQSSSELQIHSLKDAFASTSEGPEKTPVSTRTRSSHLKRPKIGKHFQDSEFSSSQG
EDENVAKTSPTASVNKIEYAARTSESSEEFLEEEPEQGVIDFEDES GDKDAQPALETQPRLQKQDGDKDS
ALEPVNGEVMDAALKPSLTTEDEDSTSEGLEEDLKVPPFNSSGEPGNPVPLVAESSKVPEATLAKTSPDT
DSEMLIDQSPSDDKGHTTEENLSPVSKKTLGSSDNVATVSNIEKSDGNFPNSVVPFPEEPVSNLSPN
TTSSVEDQGEEGAPEAQEPSATQSSLIEVELEDAPFPQAGQKSQSEEQSEASSEHLEQFTQSAEKAVDS
SSEEIEVEVPVDRRNLRRKAKGHKGP GKKKAKLT
```

SGPTRRRLE - GFP Tag - V

Restriction Sites:

SgfI-RsrII

Cloning Scheme:



ACCN: NM_001146045

ORF Size: 1995 bp

OTI Disclaimer: The molecular sequence of this clone aligns with the gene accession number as a point of reference only. However, individual transcript sequences of the same gene can differ through naturally occurring variations (e.g. polymorphisms), each with its own valid existence. This clone is substantially in agreement with the reference, but a complete review of all prevailing variants is recommended prior to use. [More info](#)

OTI Annotation: This clone was engineered to express the complete ORF with an expression tag. Expression varies depending on the nature of the gene.

Components: The ORF clone is ion-exchange column purified and shipped in a 2D barcoded Matrix tube containing 10ug of transfection-ready, dried plasmid DNA (reconstitute with 100 ul of water).

- Reconstitution Method:**
1. Centrifuge at 5,000xg for 5min.
 2. Carefully open the tube and add 100ul of sterile water to dissolve the DNA.
 3. Close the tube and incubate for 10 minutes at room temperature.
 4. Briefly vortex the tube and then do a quick spin (less than 5000xg) to concentrate the liquid at the bottom.
 5. Store the suspended plasmid at -20°C. The DNA is stable for at least one year from date of shipping when stored at -20°C.

RefSeq: [NM_001146045.1](#), [NP_001139517.1](#)

RefSeq Size: 4537 bp

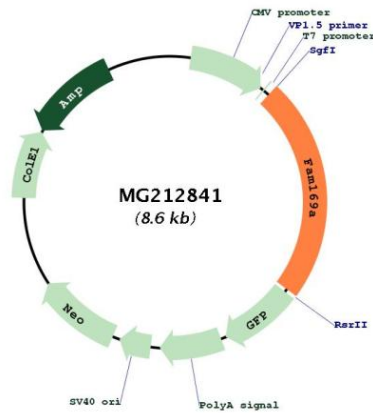
RefSeq ORF: 1998 bp

Locus ID: 320557

UniProt ID: [Q5XG69](#)

Cytogenetics: 13 D1

Product images:



Circular map for MG212841