

## Product datasheet for **MG212819**

### Ermard (NM\_001039552) Mouse Tagged ORF Clone

#### Product data:

Product Type:	Expression Plasmids
Product Name:	Ermard (NM_001039552) Mouse Tagged ORF Clone
Tag:	TurboGFP
Symbol:	Ermard
Synonyms:	2210404J11Rik; 2410011O22Rik; AI448938
Mammalian Cell Selection:	Neomycin
Vector:	pCMV6-AC-GFP (PS100010)
E. coli Selection:	Ampicillin (100 ug/mL)



[View online »](#)

**ORF Nucleotide Sequence:**

>MG212819 representing NM\_001039552  
 Red=Cloning site Blue=ORF Green=Tags(s)

TTTTGTAATACGACTCACTATAGGGCGGCCGGAATTCGTCGACTGGATCCGGTACCGAGGAGATCTGCC  
 GCC**CGGATCGCC**

ATGGAGATTTTACCAGGGGATTCCATGACCACATGCCTTTCTCCTTGTAGTCATGACTTGATTTGTAACC  
 TTGGGTTTGAACCTCAAAGAAATTTGTGATATCAATAGCATTGTAACCTCAAATGGTGAAGTACGATGGAA  
 AGCAATTACTGACCGTGTGAGATATGAAGAATTAGGGCGAAGTCTGGACTACAGGAGAAGTGTGCAGCAG  
 CTGGGTCCGGTGTGTGAGGCCATCCACCTACACATCTCAGCTCTGACCAGGGCTCAGTTTGAAATTCAGT  
 ATTCGCCCTTGGTACCAGTGGACAACCTTATCCAGAGTTGTTTCTTGAGATACTTGATGCCTTGCAAAGCTC  
 GCAGCCTGCTGCCGTCTCCCTCGGCGTATGAACTAGCTTCTATCTGGAGCGAGCCCTCGGCGACGTA  
 TTTTACTGGTTGGAAAGAGTGCCCTTTCTCCTAAGAGATCTTCTGCATCTGCAGAGCTTGACAAG  
 TCTTTGGACATGCTGTGATGGACATACTAAAAGTCTTCATCGGGTCTCCCTCGGACTCAACCTGAGAAA  
 CGTCTTGTGGCATGGCTTTGCTTCCCTCAAGATATTCTCCAAAATACTGTTTCAGCCATGTTGCTGTTG  
 ACGGCAGGACTGGGCCAGTACTGAAGAGTTACCTTACCACACAAAAGGTCACCTTGGCAGATCGACCTT  
 TTGTAACACTCACAACCTTAGAGGATGTGATTGTTTTCTGGTGTGACTTATGAGGTAAGTGCAGCATT  
 AGAGACAGTGTGACAAAATCCAACCTTCTATTAATAATCATGTTGCCATATTGGGAAATGGCAGTGAAG  
 AAGTTCAAGTCCGACAGGTTTGGCGACTGCACCATGTTGTTGCTGTACAGCTAGAAGCTGGACTCAGGA  
 GACTGTTTGTGCAGTTAAACAAGTGTCTGATAGACTGCTCACAGCCGAGTCAACAATTCGTATACCCAC  
 GTTTGATGAAATACTGGCAAAACACATGAGTGTGGTAGCATGAACCAGCTTCTTGTTCCTTGGAGAG  
 CCTGCCATGGAATCTTGTGGGATTTCTGAAGTATCAGGAGGGTCTCGTATCCGGGATCATTTAAGCC  
 ATGGGGAGATCAACATACGTGAATTTCCAGAAGAGGGCCGAGCCAGCTGCTCACATTCCTCCCTGGTGT  
 GCTGCTCAGATCACTGAGAAGGGGACAGTGTGAGAAGTGAAGGAGGAAGCAGCAATACAGTTGCTGGTT  
 AGGCTTGCAGAAGGATACAGGTCTCGCTGCCACCCAGCCTTCCAGCTTCAAAAACAGGTGCTGAGCTGTG  
 AGAGAAGCCTCAGGATGTGGCCTGTGCCGCTTTGCCAGAAGAGTGTGTGAGGAAGCAGGCAGATTGGA  
 AGGAAATCTGAAGCATGTGCCTGCAACTCTTAAATTAGCAAGATTTGGTGTGAGCTCTGCCACTACCTG  
 CCTGGGAGTGCCTGTGCTATAAATGGCTTGGATGGTCTTCCCTCAGAGAAGTGGTCCCAGCTGCTCAGTG  
 AACTGTGTAGCACACGCATTCTACACTGTTCTGCCCCAGAATCGTTCTAGAAGTCTAGTTGTGCTCCG  
 AGGCATCAACTCCAGTGCCAACGCGTATCTGACCAGGTACCCGCTCTTTCAGCTAAGACACAGGCAA  
 TGGGTGGAGCGTAGGTTACGTTCAAGGCAGCGTCAGAAGTATGTGCGCATGCTCAGCAGTGTAGACTTT  
 TATGTCATGCTTTCCCTGATTTTGTGCTCCTTGCAGTGGAGTTGGCCAGTGTCCATGCTGTTCTGTA  
 TAAGGGCGCTGAGGAACAACAGCAGTATCTGAGTACACTGAGAACC

AG**CGGACCG**ACGCGTACGCGGCCGCTCGAG - GFP Tag - GTTTAA

**Protein Sequence:**

>MG212819 representing NM\_001039552  
 Red=Cloning site Green=Tags(s)

MEILPGDSMTTCLSPLVHDLICNLGFELKEICDINSIVTQNGEVRWKAITDRVRYEELGRSLDYRRSVQQ  
 LGPVCEAIHLHISALTRAQFEIQSPWYQWTTYPELFLEILDALQSSQPAAVSLGVMKLASYLERALGDV  
 FLLVGKECPFLRLDLSAELAQVFGHAYMDILKVFIGSPCGLNLRNVLWHGFASPQDIPPKYCSAMLLL  
 TAGLGQLLKSYLHHTKVTLAHRPFVTLTNLEDVIVFPGVTYEVLSALETVMTKSNFLKIMLPYWEMAVS  
 KFKSHRFADCTMLLLSQLAELRRLFAAVNKCPDRLLTAESTILYTFDEILAKHMSDGSMNQLPCFLGE  
 PAMEFLWDFLNYQEGPRIIRDHLSHGEINIREFPPEEAAGQLLTFSLVLLLRFTKGTVSELKEEAAIQLLV  
 RLAEGYRSRCHPAFQLQKQVLSERSLRMWPVPLPEECCQEAGRLEGNSEACACNSLISKIWCCELCHYL  
 PGSACATINGLDGLPSEKWSQLSELCSSTRIPTLFCPRIVLEVLVVLRGINSQCQRVSDQVTASLQLRHRQ  
 WVERRLSRQRQNYVRMLSSVRLLCPLSLILLLLALELASVHAVRDKGAEQQYQLSTLRT

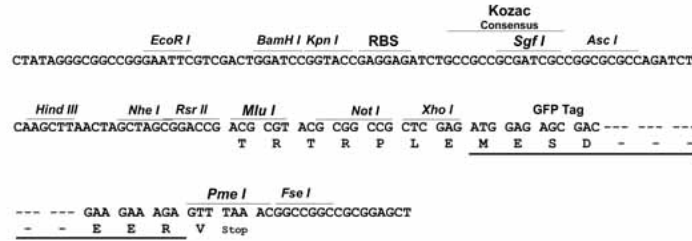
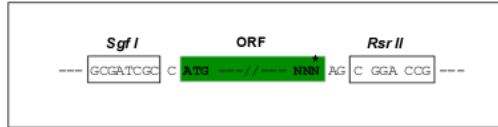
SGP**TRRRLE** - GFP Tag - V

**Restriction Sites:**

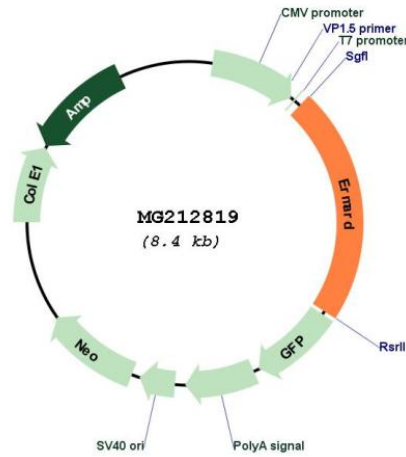
Sgfl-RsrII

Cloning Scheme:

Cloning sites used for ORF Shuttling:



Plasmid Map:



ACCN: NM\_001039552  
 ORF Size: 1866 bp

<b>OTI Disclaimer:</b>	The molecular sequence of this clone aligns with the gene accession number as a point of reference only. However, individual transcript sequences of the same gene can differ through naturally occurring variations (e.g. polymorphisms), each with its own valid existence. This clone is substantially in agreement with the reference, but a complete review of all prevailing variants is recommended prior to use. <a href="#">More info</a>
<b>OTI Annotation:</b>	This clone was engineered to express the complete ORF with an expression tag. Expression varies depending on the nature of the gene.
<b>Components:</b>	The ORF clone is ion-exchange column purified and shipped in a 2D barcoded Matrix tube containing 10ug of transfection-ready, dried plasmid DNA (reconstitute with 100 ul of water).
<b>Reconstitution Method:</b>	<ol style="list-style-type: none"><li>1. Centrifuge at 5,000xg for 5min.</li><li>2. Carefully open the tube and add 100ul of sterile water to dissolve the DNA.</li><li>3. Close the tube and incubate for 10 minutes at room temperature.</li><li>4. Briefly vortex the tube and then do a quick spin (less than 5000xg) to concentrate the liquid at the bottom.</li><li>5. Store the suspended plasmid at -20°C. The DNA is stable for at least one year from date of shipping when stored at -20°C.</li></ol>
<b>RefSeq:</b>	<a href="#">NM_001039552.2</a> , <a href="#">NP_001034641.2</a>
<b>RefSeq Size:</b>	2513 bp
<b>RefSeq ORF:</b>	1869 bp
<b>Locus ID:</b>	381062
<b>Cytogenetics:</b>	17 A2