

Product datasheet for **MG212802**

Nadk2 (NM_001040395) Mouse Tagged ORF Clone

Product data:

Product Type:	Expression Plasmids
Product Name:	Nadk2 (NM_001040395) Mouse Tagged ORF Clone
Tag:	TurboGFP
Symbol:	Nadk2
Synonyms:	MNADK; Nadkd1
Mammalian Cell Selection:	Neomycin
Vector:	pCMV6-AC-GFP (PS100010)
E. coli Selection:	Ampicillin (100 ug/mL)
ORF Nucleotide Sequence:	>MG212802 representing NM_001040395 Red=Cloning site Blue=ORF Green=Tags(s)

TTTTGTAATACGACTCACTATAGGGCGCCGGGAATTCGTCGACTGGATCCGGTACCGAGGAGATCTGCC
GCC**CGATCGCC**

ATGACTTGCTACCGGGCTTCTGCTGGGCAGCTGCCGGCGCGTGGCGGGTGGCCGCGGGCTCTGCGGG
GTTGCGGGCTCGGGCGGGACGGCCGGCGGCACTGGGGCACGGGCAGCCGCGGAGCTGGCGGGCGGTGG
TAGCCCCCGGACGGCGGCTTCCGCCCTCGCGGGTGGTGGTGGCGAAAACCACCCGCTACGAGTTC
GAGCAGCAGCGGTACCGCTACCGGAGCTCTCGGAGGAGACCTGAAGCAGCTGCTTGCATTGAAAGGCT
CGAGCTACAGTGGACTACTTGAGCGACATCATATTCACACAAAAATGTAGAACACATAATTGATAGTTT
ACGGGATGAAGGGATTGAGGTTTCGCTGGTCAAGCGGAGGGAGTACGATGAAGAGACAGTTCGATGGGCA
GACGCTGTATAGCTGCGGGAGGTGATGGCACGATGCTTCTGGCTGCGAGTAAAGTCTGGACAGACTTA
AACCTGTCAATGGGGTCAACACTGATCCGGAACGGTCTGAAGGTCACTTATGTCTGCCTGTGCGATACAC
GCATTCCTTCCCTGAAGCCTTACGGAGGTTCTCTCGTGGTGGTTCAGGTGGTGTGGAGGCAGCGGATC
AGGTTATATCTGGAAGGGACTGGCATAAACCCCACTCCCGTGGACCTTACGAACAGCAGCTGAGCTTGA
ATCAGCACAGCCGAGCCTTAAACATCGAAAGAGCGCACGATGAAAGGTGCGAGGCCGTGAGGCCTCAGCT
TCTGCCGTGAGAGCGCTCAATGAAGTCTTATTGGGGAGAGCCTGTATCCAGGGCTTCTACTATGAA
ATTTTCAGTGCATGACGGCCATGGGAGAAGCAGAAGAGCTCAGGGCTCAATTTGTGCATGGGACAGGAT
CGAAGGCCTGGTCAATCAATATAACAGGGTTGCAGCGCAGGCTGTTGAAGATGTTTTACATATTGCAAG
ACGACAAGGAAATCTGACTCTTCCATTGAACAAAGACTTGGTAGAAAAAGTGACAAACGAATATAACGAA
TCATTGCTCTACAGTCCAGAAGAACAAAAATACTTTTCAGTATTCGAGAGCCAATAGCAAAACAGAGTTT
TCTCCAGCAGCCGTGAGCGTTGTTTCTCTTCCAAAGTTTGTGTTCTCGATGTTGGGATGCCTGCAT
GGTTGTGGATGGAGAACGTCTTTGAGTTTAAACGACGGAGCAATTGCTTCAATGATGATCAATAAAGAA
GATGAGCTTCGAAGTGTGATTCTAGAGCAG

ACGCGTACGCGGCCGCTCGAG - GFP Tag - GTTTAA



[View online »](#)

Protein Sequence: >MG212802 representing NM_001040395
 Red=Cloning site Green=Tags(s)

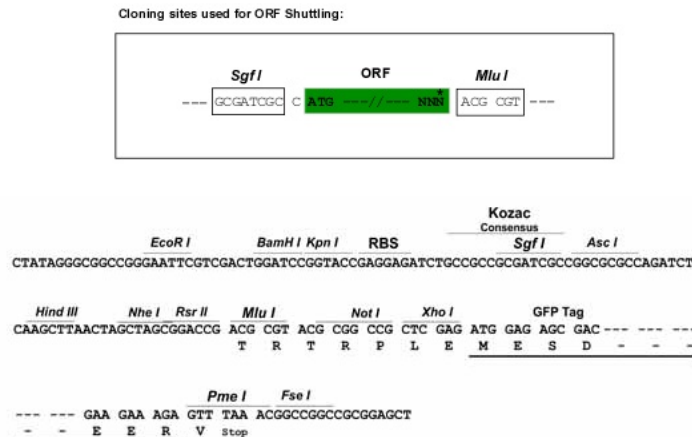
MTCYRGFLLGSCRRVAGGRAALRGSGSGADGRRHLGHGQPRELAGGGSPADGGFRPSRVVVVAKTTRYEF
 EQQRYRYAELSEEDLKQLLALKGSSYSGLLERHHIHTKNVEHIIDSLRDEGIEVRLVKRREYDEETVRWA
 DAVIAAGDGTMLLAASKVLDRLKPVIGVNTDPERSEGLCLPVRVYTHSFPEALRRFSRGEFRWLWRQRI
 RLYLEGTGINPTPVDLHEQQLSLNQHSRAFNIERAHDSEASGPQLLPVRALNEVFIGESLSSRASYE
 ISVDDGPWEKQKSSGLNLCTGTGSKAWSFNINRVAAQAVEDVLHIARRQGNLTLPLNKDLVEKVTNEYNE
 SLLYSPEEPKILFSIREPIANRVFSSSRQRCFSSKVCVRSRCWDACMVVDGGTSFEFNDGAIASMMINKE
 DELRTVILEQ

TRTRPLE - GFP Tag - V

Restriction Sites:

SgfI-MluI

Cloning Scheme:



ACCN: NM_001040395

ORF Size: 1290 bp

OTI Disclaimer: The molecular sequence of this clone aligns with the gene accession number as a point of reference only. However, individual transcript sequences of the same gene can differ through naturally occurring variations (e.g. polymorphisms), each with its own valid existence. This clone is substantially in agreement with the reference, but a complete review of all prevailing variants is recommended prior to use. [More info](#)

OTI Annotation: This clone was engineered to express the complete ORF with an expression tag. Expression varies depending on the nature of the gene.

Components: The ORF clone is ion-exchange column purified and shipped in a 2D barcoded Matrix tube containing 10ug of transfection-ready, dried plasmid DNA (reconstitute with 100 ul of water).

Reconstitution Method:

1. Centrifuge at 5,000xg for 5min.
2. Carefully open the tube and add 100ul of sterile water to dissolve the DNA.
3. Close the tube and incubate for 10 minutes at room temperature.
4. Briefly vortex the tube and then do a quick spin (less than 5000xg) to concentrate the liquid at the bottom.
5. Store the suspended plasmid at -20°C. The DNA is stable for at least one year from date of shipping when stored at -20°C.

RefSeq: [NM_001040395.4](#), [NP_001035485.2](#)

RefSeq Size: 3665 bp

RefSeq ORF: 1293 bp

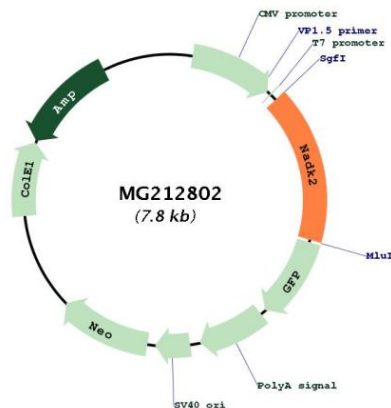
Locus ID: 68646

UniProt ID: [Q8C5H8](#)

Cytogenetics: 15 A1

Gene Summary: Mitochondrial NAD(+) kinase that phosphorylates NAD(+) to yield NADP(+). Can use both ATP or inorganic polyphosphate as the phosphoryl donor (By similarity).[UniProtKB/Swiss-Prot Function]

Product images:



Circular map for MG212802