

## Product datasheet for **MG212750**

### 1700071K01Rik (NM\_001033765) Mouse Tagged ORF Clone

#### Product data:

Product Type:	Expression Plasmids
Product Name:	1700071K01Rik (NM_001033765) Mouse Tagged ORF Clone
Tag:	TurboGFP
Symbol:	1700071K01Rik
Mammalian Cell Selection:	Neomycin
Vector:	pCMV6-AC-GFP (PS100010)
E. coli Selection:	Ampicillin (100 ug/mL)
ORF Nucleotide Sequence:	>MG212750 representing NM_001033765 Red=Cloning site Blue=ORF Green=Tags(s)

TTTTGTAATACGACTCACTATAGGGCGGCCGGAATTCGTCGACTGGATCCGGTACCGAGGAGATCTGCC  
GCC**CGATCGCC**

ATGGCTGCCAAAGTGTGGAGTCCATCGGAAAGTTCGGCTTGGCTCTAGCAGTTGCAGGAGGCGTGGTGA  
GCTCTGCTTTATATAACGTGGATGCTGGGCACAGAGCTGTCATCTTTGACCGATTCCATGGAGTACAGGA  
CATTGTGGTAGGGGAAGGGACTCACTTTCTCATCCCTTGGGTACAGAAACCAGTTATATTTGACTGTGCG  
TCTCAACCACGGAATATACCAGTCATCACTGGTAGCAAAGATTTGCAGAACGTC AACATCACACTGCGTA  
TCCTCTTCCGGCCGTAGCCAGCCAGCTTCCTCATATCTACACCAACATTGGCCAGGACTATGATGAGCG  
GGTGCTGCCATCTATCACCTCAGAGATCCTCAAGTCGGTGGTGGCTCGCTTCGATGCTGGAGAATTGATT  
ACCCAGCGAGAACTGGTCTCCAGGCAGGTGAGCGATGACCTCACAGAGCGAGCAGCCACATTTGGGCTCA  
TCCTAGATGACGTGTCCCTGACACATCTGACCTTTGGGAAGGAGTTCACAGAGGCGGTGGAAGCCAAACA  
GGTGGCTCAGCAGGAAGCGGAGACAGCCAGATTTGTGGTGGAAAAGGCTGAGCAGCAGAAGGTGGCAGCC  
ATCATTCTGCTGAGGGGACGCTAAGGCGGCAGAGCTGATCGCCAACCTCGCTGGCCACAGCAGGCGATG  
GCCTGATCGAGCTGCGCAAGCTGGAGGCTGCTGAGGACATTGCGTACCAACTCTCCCGCTCTCAGAATGT  
CACCTACCTGCCAGTGGGCAGACTGTGCCCTCAAGCTCCC

**ACGCGT**ACGCGGCCGCTCGAG - GFP Tag - GTTTAA



[View online »](#)

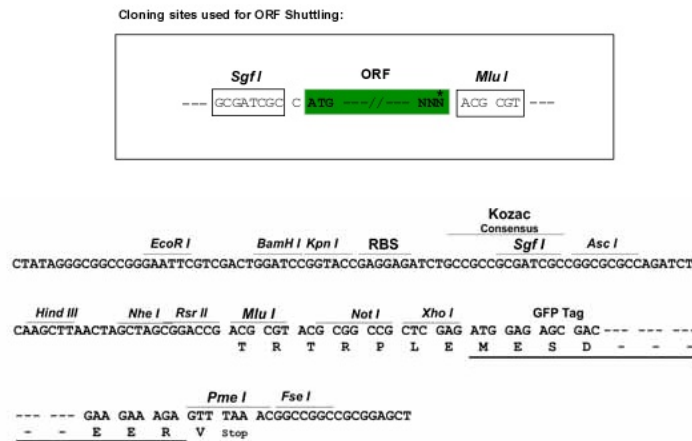
**Protein Sequence:** >MG212750 representing NM\_001033765  
 Red=Cloning site Green=Tags(s)

MAAKVFESIGKFGALAVAGGVSSALYNVDAGHRAVIFDRFHGVQDIVVGEGETHFLIPWVQKPVIFDCR  
 SQPRNIPVITGSKDLQNVNITLRLIFRPVSQLPHIYTNIGQDYDERVLPSTSEILKSVARFDAGELI  
 TQRELVSRQVSDDLTERAATFGLILDDVSLTHLTFGKEFTEAVEAKQVAQQEAETARFVVEKAEQQKVA  
 IISAEGDAKAAELIANSLATAGDGLIELRKLEAAEDIAYQLSRSQNVTYLPVGGTVPLKLP

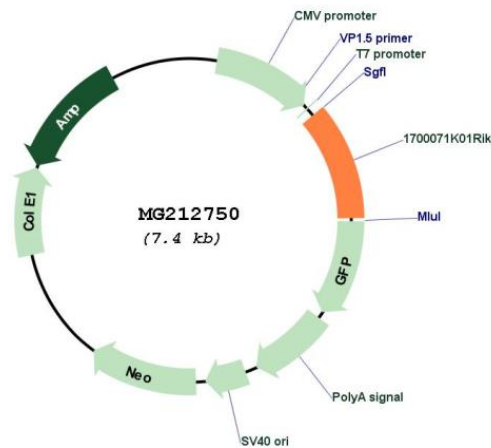
TRTRPLE - GFP Tag - V

**Restriction Sites:** SgfI-MluI

**Cloning Scheme:**



**Plasmid Map:**



**ACCN:** NM\_001033765

**ORF Size:** 813 bp

<b>OTI Disclaimer:</b>	The molecular sequence of this clone aligns with the gene accession number as a point of reference only. However, individual transcript sequences of the same gene can differ through naturally occurring variations (e.g. polymorphisms), each with its own valid existence. This clone is substantially in agreement with the reference, but a complete review of all prevailing variants is recommended prior to use. <a href="#">More info</a>
<b>OTI Annotation:</b>	This clone was engineered to express the complete ORF with an expression tag. Expression varies depending on the nature of the gene.
<b>Components:</b>	The ORF clone is ion-exchange column purified and shipped in a 2D barcoded Matrix tube containing 10ug of transfection-ready, dried plasmid DNA (reconstitute with 100 ul of water).
<b>Reconstitution Method:</b>	<ol style="list-style-type: none"><li>1. Centrifuge at 5,000xg for 5min.</li><li>2. Carefully open the tube and add 100ul of sterile water to dissolve the DNA.</li><li>3. Close the tube and incubate for 10 minutes at room temperature.</li><li>4. Briefly vortex the tube and then do a quick spin (less than 5000xg) to concentrate the liquid at the bottom.</li><li>5. Store the suspended plasmid at -20°C. The DNA is stable for at least one year from date of shipping when stored at -20°C.</li></ol>
<b>RefSeq:</b>	<a href="#">NM_001033765.2</a> , <a href="#">NP_001028937.1</a>
<b>RefSeq Size:</b>	1038 bp
<b>RefSeq ORF:</b>	816 bp
<b>Locus ID:</b>	237880
<b>Cytogenetics:</b>	11 B5