

## Product datasheet for **MG212619**

### Ceacam19 (NM\_177036) Mouse Tagged ORF Clone

#### Product data:

Product Type:	Expression Plasmids
Product Name:	Ceacam19 (NM_177036) Mouse Tagged ORF Clone
Tag:	TurboGFP
Symbol:	Ceacam19
Synonyms:	C130022P09Rik; CEAL1
Mammalian Cell Selection:	Neomycin
Vector:	pCMV6-AC-GFP (PS100010)
E. coli Selection:	Ampicillin (100 ug/mL)
ORF Nucleotide Sequence:	>MG212619 representing NM_177036 Red=Cloning site Blue=ORF Green=Tags(s)

TTTTGTAATACGACTCACTATAGGGCGGCCGGAATTCGTCGACTGGATCCGGTACCGAGGAGATCTGCC  
GCC**CGATCGCC**

ATGGAGACCTGGACCCACCGGGCTGCTTCTCAAAGGGCCTCCTGTTCTCAGCCTTGTTCTGGCCCTTG  
AGCTGCCCAAGGCTCACAGGCAGCCCTCCACATCGAGATGATCCAGAGCAGCCTCAAAGAACCAGGA  
CCTTCTTCTGTCCCTTACGGTGTCCAGCACTGCTCAGGATTCATCTGGTACCTGGGGGAGGAGGCT  
TCTGGAGGCACAAGGCTGTTCTTATATCCCCGGACTACCACGGCCCCAGAGGGATGGCAGTGCCATGG  
GACAGCGAGACATTGTTGGCTTCCAAAATGGTTCCATGCTGCTTCGAAATGCCAACCTTCAGATAGTGG  
CACCTATCAGGTGGCCGCCACCATGAACCCTGCCTGGACAATGAAGGCCAAGATTAACGTCCATGTAGCT  
GGTGCACGCGAGGTCTCCTCACTCCTCCCTGTCCATGCCGGGATCACGGTAGCCATCATATTGGGAGTC  
TTGCTATCGGGTCACTACTTGTATGTGGCATTGCCTATGTCTGGTCACTCGAAGCCGGAAGGGCCGGAG  
CCCCAGGAATCCAGCCACAGAGAAGCCAGAAGTGAACCTGAGTCTGAATCTGGTGACAGCAACATCTAT  
GAAGTGATGCCATCTCCAGTCTTCTGGTGTCTCCATCAGTGACATGGAGCAAGGAAGCCACCCATGA  
GTCAGCCTCCACCACCTCCACCAGCATCTCAGGAGCCAGAGCCAGAGCACCAGCACTATCAGGACCTACT  
AAACCTGACCCAGCCCCATACTGCCAGCTGGTGCCAACCTCC

**ACGCGT**ACGCGGCCGCTCGAG - GFP Tag - GTTTAA



[View online »](#)

**Protein Sequence:** >MG212619 representing NM\_177036  
 Red=Cloning site Green=Tags(s)

METWTPPGCFKGLLFSALFLALELPQGSQAALHIEMIQPQKNQDLLSLHGVNSTAQDFIWLGEAA  
 SGGTRLFSYIPGLPRPQRDGSAMGQRDIVGFPNGSMLLRNAQPSDSGTQVAATMNPATMKAKINHVHA  
 GAREVSSLLPVHAGITVAIIIGSLAIGSLLVCGIAYVLVTRSRKGRSPRNPATEKPEVNLSPESGDSNIY  
 EVMPSPVFLVSPISDMEQGSPPMSQPPPPPPASQEPEPEHQHYQDLLNPDPAFYCQLVPTS

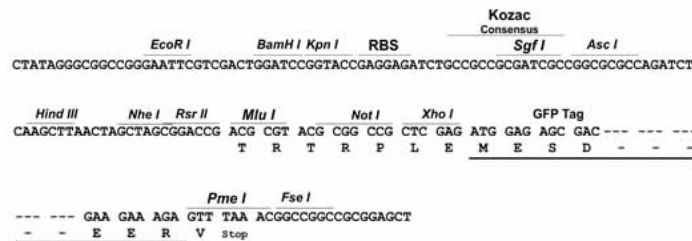
TRTRPLE - GFP Tag - V

**Chromatograms:** [https://cdn.origene.com/chromatograms/ja1710\\_a09.zip](https://cdn.origene.com/chromatograms/ja1710_a09.zip)

**Restriction Sites:** SgfI-MluI

**Cloning Scheme:**

Cloning sites used for ORF Shutting:



**ACCN:** NM\_177036

**ORF Size:** 813 bp

**OTI Disclaimer:** The molecular sequence of this clone aligns with the gene accession number as a point of reference only. However, individual transcript sequences of the same gene can differ through naturally occurring variations (e.g. polymorphisms), each with its own valid existence. This clone is substantially in agreement with the reference, but a complete review of all prevailing variants is recommended prior to use. [More info](#)

**OTI Annotation:** This clone was engineered to express the complete ORF with an expression tag. Expression varies depending on the nature of the gene.

**Components:** The ORF clone is ion-exchange column purified and shipped in a 2D barcoded Matrix tube containing 10ug of transfection-ready, dried plasmid DNA (reconstitute with 100 ul of water).

**Reconstitution Method:**

1. Centrifuge at 5,000xg for 5min.
2. Carefully open the tube and add 100ul of sterile water to dissolve the DNA.
3. Close the tube and incubate for 10 minutes at room temperature.
4. Briefly vortex the tube and then do a quick spin (less than 5000xg) to concentrate the liquid at the bottom.
5. Store the suspended plasmid at -20°C. The DNA is stable for at least one year from date of shipping when stored at -20°C.

**RefSeq:** [NM\\_177036.5](#), [NP\\_796010.1](#)

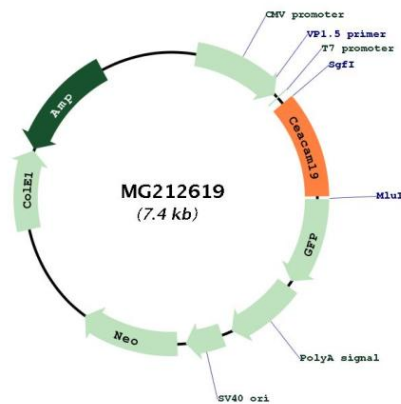
**RefSeq Size:** 3361 bp

**RefSeq ORF:** 816 bp

**Locus ID:** 319930

**Cytogenetics:** 7 A3

### Product images:



Circular map for MG212619