

## Product datasheet for **MG212579**

### Cactin (NM\_027381) Mouse Tagged ORF Clone

#### Product data:

Product Type:	Expression Plasmids
Product Name:	Cactin (NM_027381) Mouse Tagged ORF Clone
Tag:	TurboGFP
Symbol:	Cactin
Synonyms:	2510012J08Rik
Mammalian Cell Selection:	Neomycin
Vector:	pCMV6-AC-GFP (PS100010)
E. coli Selection:	Ampicillin (100 ug/mL)



[View online »](#)

**ORF Nucleotide Sequence:**

>MG212579 representing NM\_027381  
 Red=Cloning site Blue=ORF Green=Tags(s)

TTTTGTAATACGACTCACTATAGGGCGGCCGGGAATTCGTCGACTGGATCCGGTACCGAGGAGATCTGCC  
 GCC**CGGATCGCC**

ATGCGCGGCGCGGCCGCAAAATGGGTCGGGACTCTCGCTCGCGCTCACGGTCTGTGGTTCGAGGGGTC  
 GGAAGCAGCGGAGTCGAAGCCGGGGCCGGAGCCGAGCCGGAGTCGGAGTCGGAGTCGGAGCCGGAGCCG  
 GAGCCGGAGCCGGAGCCGGAGCCATGGGCGGAGCAGCCGAAGGCGACGGGAACACGAGCGCGCGCGAA  
 CGCAAGCGGCGCAGCCGAGGGCGCAGGTCAGATTCGGAAGGAGAGCAGCGGCAGAAGTCTAGGAGGCGAA  
 GCCAGAGCCTTCGACCACCCCGATGGCACTCACAGAACCAGTCTCATGCTCTGACTCGGGTGGAGAGCG  
 GGCTCAGGGCTCTGGGCCGTAAGGGTCACAGGCGCTCGTGGTCCCGGGGTATCAGCGTCTAGCTTG  
 GACTCCCCAAGACGCTCCCGAGTCCCGGACAGCTACCCTGGCCCTGAGCCAGCAGCAGAGCCTGCAGG  
 AACGGCTCGGGCTTCGTGAGGAGCGGAAGCAGCAAGAAGAGCTGCTCAAGGCCTTCGAGACGCTGAGGA  
 GAAGCGTCGCGGCGACTGGCCAAGAAGGAAGCTAAGGAACGCAAGAAGCGGGAGAAGATGGGCTGGGGT  
 GAGGAGTACATGGGCTACACCAACCCGACAACCCTTTGGAGACAACAACCTGCTCGGCACCTTATCT  
 GGAACAAGGCCTTGAGAGAAGAAGGGCATCAGCCACCTGGAGGAGAAGGAGCTGAAGGAGCGCAACAGAG  
 GATCCAGGAAGACAACCGTCTGGAGCTGCAAAAAGGTCAAACAGCTGCGGCTAGAGCGGGAACGGGAGAAA  
 GCCATGAGGGAGCAGGAGCTGGAGTTGCTGCAGCGGGAGAAGGAGGCAGAACACTTTAAGACGTGGGAGG  
 AGCAAGAGGACAGCTTCCACTTGGCGCAGGCCAAGCTTCGCTCCAAGATCCGAATCCGAGATGGGCGAGC  
 TAAGCCCATCGACCTCCTGGCCAAGTACATCAGCGCAGAGGATGACGACCTGGCGGTGGAGATGCACGAG  
 CCCTACACCTTCTCAACGGCCTCACTGTGGCGGACATGGAGGACCTACTAGAAGACATCCAGGTGTACA  
 TGGAACTAGAGCAGGGCAAGAATGTGGACTTCTGGCGGACATGACGACCATCACAGAGGATGAGATTGC  
 CAAGCTCCGCAAGCTGGAGGCCTCTGGCAAGGGCCAGGTGAGCGCCGTGAGGGAGTCAATGCCTCAGTC  
 AGCTCCGATGTGCACTCGGTGTTCAAGGAAAAGACGTACAACCAGCTGCAGGTATCTTCCAGGGCATCG  
 AGGGCAAGATCCGGGCCGGGGCCCAACCTGGACATGGGCTATTGGGAGAGCCTGCTGCAGCAGTTGCG  
 TGACACATGGCCAGGGCCAGGCTCCGTGAGCGCCACCAAGATGTTCTTAGACAGAAGCTGTTCAAGCTG  
 AAGCAGGAGCAGGGTGTGGAGAGCGAGCCGCTGTTCCCATCCTCAAGTCGGAGCCCTCGGCCGCCACA  
 GCCCCGAACCTGAGGAGCGACCCCCAGCCCCGGGACTTCAGTGGACCCAGTGGAGCCTGTGGAACCTGA  
 GGAGGCCACAGCACCAGGAGAAGCAGAGGGGAGGCAGAAGGGGAGGCAGTGTGATGGAGGAAGACCTG  
 ATCCAGCAGAGCCTGGCGGACTATGACGCCGGCCGCTACAGCCCACGGCTGCTCACGGCACACGAGCTGC  
 CTCTGGACGCACACGTGCTGGAGCCTCAGGAGGACCTGCAGCGCCTGCAGCTGTCTCGCCAGCAGTTCA  
 GGCTACAGGTGATGCGAGTGAGAGCGCTGAGGACATCTTCTCCGGCGTGCAGGGAGGGCATGGGGCAG  
 GATGAGGCACAGTTACAGCGTGGAGATGCCACTGGGCGGCCGGCCTATCTGTGGGCCGACAAGTACCGGC  
 CGGAAAACCTCGCTTCTTCAACCCGCTGCACACGGGCTTCGAGTGGAAACAAATAAACCAACGCATTA  
 TGACTTCGACAACCCTCCACCAAGATTGTGCAGGGCTACAAATCAACATCTTCTACCCAGACCTCATC  
 CGTAAGCGCGCCACACCTGAGTACTTCTGGAGGCTGTGCAGACAACCGGGACTTTGCCATTCTGCGCT  
 TCCATGCGGGACCGCCCTACGAGGACATCGCTTCAAGATCGTCAGTCGTGAGTGGGAGTATTGCAACCG  
 CCATGGCTTCCGCTGCCAGTTCCGCAATGGAATCTTCCAGCTCTGGTTCCACTTCAAGCGCTACCGCTAC  
 CGTCGG

**ACGCGT**ACGCGGCCGCTCGAG – GFP Tag – GTTTAA

**Protein Sequence:** >MG212579 representing NM\_027381  
 Red=Cloning site Green=Tags(s)

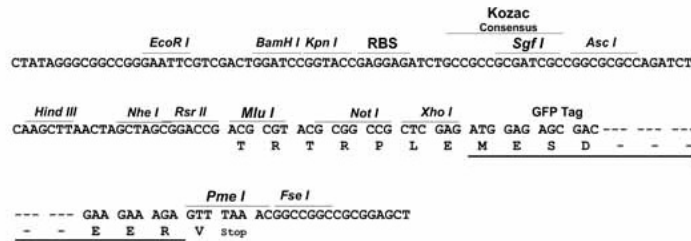
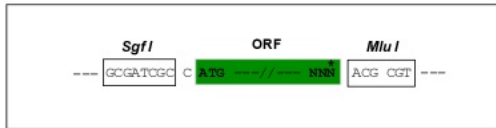
```
MRGAGRQMGRDSRSRSRSGVRRGRKQSRSRGRSRSRSRSRSRSRSRSRSHGRSSRRRREHERRR
RKRRSRGRRSDSEGEQRQKSRRRSQSLRPPRWHSQNQSSCSDSGEERAQGSWARKGHRSSWSPGSSASSL
DSPRRSRSPGTATLALSQQQSLQERLRLREERKQQEELLKAFETPEEKRRARLAKKEAKERKKREKMGWG
EEYMGYTNTDNPFGDNNLLGTFIWNKALEKKGISHLEEKELKERNKRIQEDNRLELQKVKQLRLEREREK
AMREQELLELLQREKEAEHFKTWEQEDSFHLRQAKLRKIRIRDRGAKPIDLLAKYISAEDDDLAVEMHE
PYTFLNGLTVADMEDLLEDIQVYMELEQGKNVDFWRDMMTITIDEIAKLRKLEASGKGPGERREGVNASV
SSDVQSVFKGKTYNQLQVIFQGIQKIRAGGNLDMGYWESLLQQLRAHMARARLRERHQDVLRLQKLFKL
KQEQGVESEPLFPILKSEPSAAHSPEPEERPPSPGTSVDPVPEVPEEATAPGEAEGEAEAVLMEEDL
IQQSLADYDAGRYSRLLTAHELPLDAHVLEPHEDLQRLQLSRQQLQATGDASESAEDIFFRRAREGMGQ
DEAQFSVEMPLGGRAYLWADKYRPRKPRFFNRVHTGFENKYNQTHYDFDNPPPKIVQGYKFNIFYDPLI
RKRATPEYFLEACADNRDFAILRFHAGPPYEDIAFKIVSREWEYSHRHGFRCQFANGIFQLWFHFKRYRY
RR
```

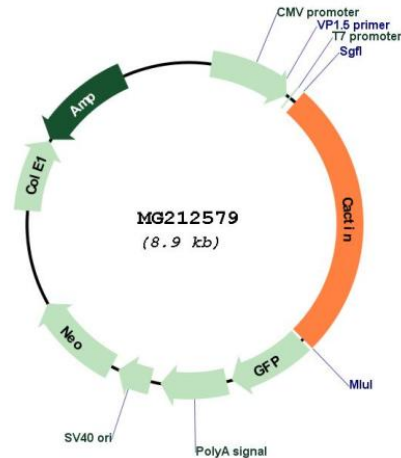
TRTRPLE - GFP Tag - V

**Restriction Sites:** SgfI-MluI

**Cloning Scheme:**

Cloning sites used for ORF Shuttling:



**Plasmid Map:**


**ACCN:** NM\_027381

**ORF Size:** 2316 bp

**OTI Disclaimer:** The molecular sequence of this clone aligns with the gene accession number as a point of reference only. However, individual transcript sequences of the same gene can differ through naturally occurring variations (e.g. polymorphisms), each with its own valid existence. This clone is substantially in agreement with the reference, but a complete review of all prevailing variants is recommended prior to use. [More info](#)

**OTI Annotation:** This clone was engineered to express the complete ORF with an expression tag. Expression varies depending on the nature of the gene.

**Components:** The ORF clone is ion-exchange column purified and shipped in a 2D barcoded Matrix tube containing 10ug of transfection-ready, dried plasmid DNA (reconstitute with 100 ul of water).

**Reconstitution Method:**

1. Centrifuge at 5,000xg for 5min.
2. Carefully open the tube and add 100ul of sterile water to dissolve the DNA.
3. Close the tube and incubate for 10 minutes at room temperature.
4. Briefly vortex the tube and then do a quick spin (less than 5000xg) to concentrate the liquid at the bottom.
5. Store the suspended plasmid at -20°C. The DNA is stable for at least one year from date of shipping when stored at -20°C.

**RefSeq:** [NM\\_027381.2](#), [NP\\_081657.1](#)

**RefSeq Size:** 2724 bp

**RefSeq ORF:** 2319 bp

**Locus ID:** 70312

**UniProt ID:** [Q9CS00](#)

**Cytogenetics:** 10 C1

**Gene Summary:**

Involved in the regulation of innate immune response. Acts as negative regulator of Toll-like receptor and interferon-regulatory factor (IRF) signaling pathways. Contributes to the regulation of transcriptional activation of NF-kappa-B target genes in response to endogenous proinflammatory stimuli. May play a role during early embryonic development. Probably involved in pre-mRNA splicing (By similarity).[UniProtKB/Swiss-Prot Function]