

Product datasheet for **MG212524**

Tafa3 (NM_183224) Mouse Tagged ORF Clone

Product data:

Product Type: Expression Plasmids
Product Name: Tafa3 (NM_183224) Mouse Tagged ORF Clone
Tag: TurboGFP
Symbol: Tafa3
Synonyms: 7530404M11Rik; Fam19; Fam19a3; Sa; Sam3; Taf; Tafa; Tafa-3
Mammalian Cell Selection: Neomycin
Vector: pCMV6-AC-GFP (PS100010)
E. coli Selection: Ampicillin (100 ug/mL)
ORF Nucleotide Sequence: >MG212524 representing NM_183224
Red=Cloning site Blue=ORF Green=Tags(s)

TTTTGTAATACGACTCACTATAGGGCGGCCGGAATTCGTCGACTGGATCCGGTACCGAGGAGATCTGCC
GCC**CGATCGCC**

ATGGAGAGGCCACCAGCAACTGGAGCGCAGGCAGCTGGGTGCTTGCCTGTCCTCGCCTGGCTGTGGA
CGTGTCCGGCCTCTGCTTCTTGCAGCCTCCAACATCCGAGTCCTAGTGAAGCAGGGCACCTGCGAGGT
GATTGCTGCACATCGCTGCTGCAACCGGAACCGCATTGAGGAGCGCTCCCAGACGGTCAAATGCTCCTGC
CTGTCCGGCCAGGTGGCTGGCACCACCAGAGCAAAGCCCTCCTGCGTGGACGCCTCCATCGTCCTGCAGA
AGTGGTGGTGTGAGATGGAGCCCTGCCTGCTGGGAGAGGAGTGAAGGTGCTCCCGACCTGTCAGGGTG
GAGCTGCAGCAGTGGACACAAGGTCAAACCACCAAGGTACACGG

ACGCGTACGCGGCCGCTCGAG - GFP Tag - GTTTAA

Protein Sequence: >MG212524 representing NM_183224
Red=Cloning site Green=Tags(s)
MERPTSNWSAGSWVLALCLAWLWTCPASASLQPPTSAVLVKQGTCEVIAAHRCCNRNRIEERSQTVKCS
LSGQVAGTTRAKPSCVDASIVLQKWWCQMEPCLLGEECKVLPDLGWSWSSGHKVKTKVTR

TRTRPLE - GFP Tag - V

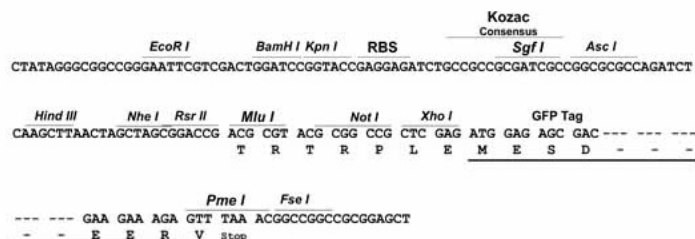
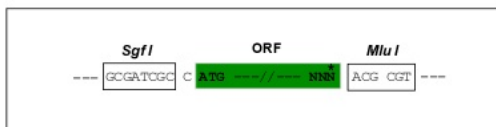
Restriction Sites: Sgfl-MluI



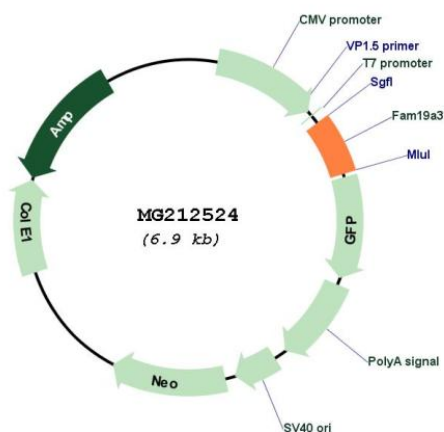
[View online »](#)

Cloning Scheme:

Cloning sites used for ORF Shutting:



Plasmid Map:



ACCN: NM_183224

ORF Size: 396 bp

OTI Disclaimer: The molecular sequence of this clone aligns with the gene accession number as a point of reference only. However, individual transcript sequences of the same gene can differ through naturally occurring variations (e.g. polymorphisms), each with its own valid existence. This clone is substantially in agreement with the reference, but a complete review of all prevailing variants is recommended prior to use. [More info](#)

OTI Annotation:	This clone was engineered to express the complete ORF with an expression tag. Expression varies depending on the nature of the gene.
Components:	The ORF clone is ion-exchange column purified and shipped in a 2D barcoded Matrix tube containing 10ug of transfection-ready, dried plasmid DNA (reconstitute with 100 ul of water).
Reconstitution Method:	<ol style="list-style-type: none">1. Centrifuge at 5,000xg for 5min.2. Carefully open the tube and add 100ul of sterile water to dissolve the DNA.3. Close the tube and incubate for 10 minutes at room temperature.4. Briefly vortex the tube and then do a quick spin (less than 5000xg) to concentrate the liquid at the bottom.5. Store the suspended plasmid at -20°C. The DNA is stable for at least one year from date of shipping when stored at -20°C.
RefSeq:	<u>NM_183224.3</u> , <u>NP_899047.1</u>
RefSeq Size:	4316 bp
RefSeq ORF:	399 bp
Locus ID:	329731
UniProt ID:	<u>Q7TPG6</u>
Cytogenetics:	3 F2.2
Gene Summary:	This gene is a member of the Tafa family which is composed of five highly homologous genes that encode small secreted proteins. These proteins contain conserved cysteine residues at fixed positions, and are distantly related to MIP-1alpha, a member of the CC-chemokine family. The Tafa proteins are predominantly expressed in specific regions of the brain, and are postulated to function as brain-specific chemokines or neurokines, that act as regulators of immune and nervous cells. [provided by RefSeq, Jul 2008]