

Product datasheet for **MG212507**

Gm5346 (NM_001025240) Mouse Tagged ORF Clone

Product data:

Product Type:	Expression Plasmids
Product Name:	Gm5346 (NM_001025240) Mouse Tagged ORF Clone
Tag:	TurboGFP
Symbol:	Gm5346
Synonyms:	EG384813
Mammalian Cell Selection:	Neomycin
Vector:	pCMV6-AC-GFP (PS100010)
E. coli Selection:	Ampicillin (100 ug/mL)



[View online »](#)

ORF Nucleotide Sequence:

>MG212507 representing NM_001025240
 Red=Cloning site Blue=ORF Green=Tags(s)

TTTTGTAATACGACTCACTATAGGGCGGCCGGAATTCGTCGACTGGATCCGGTACCGAGGAGATCTGCC
 GCC**CGCATCGCC**

ATGACTGGGGCTAAGGTCGTGGTCCATAAAAGGAACATGTTCTTAAGTTCTGCCTGTGGACAATGTTCT
 TCTTCTCTGCATATTCACCAATTGGACATGCTAAGTACAGTAGCCTCCAGAAAGTAGTGACACCCTTGAG
 GGTCACTGTCACTAGAGGAAATAATAGTTCACCAAGTTGGCTGTCTATAGCCTGAGCATTGGGGGCGAG
 AGGCACATAATCACTATGAAACCAAGGAAACTTGATATCCAGAAACTTCTTATTCACTTATAGTG
 ACCAAGGTGATCTCCTTGAAAGAACATCCTTTGTGCGAATGACTGCTACTACCATGGCTATGTGGATGA
 GGACCCAGAGTCCCTGGTCATTGTCAACACCTGTTTTGGAAGTTTGAAGGCACACTAGAAAATAATGGC
 ACAATTTATGAAATCATGCCAGGAGCAAAACGTCAACATTTGAACATCTGGCTATAAAATGGACAGTG
 GGGAGTCAGAACCATCTCCCATGAGATGTGGGTTATCAGAAGAGGAAATAGCACAAACAAATGAACCTTCA
 GAAAGCAATGCCTCCACTCTTTTGCAAAATCCCCTATGAGAATTGGTGGACCCATCACAGGTTTATTGAT
 TATTTTGTAGTAATAGATCATAATTGCTATGTTTATAGAAAATAACAATACCACGACTTGTATTCAAGATA
 TGGTGAAGTAGTCAATGGAATAAATGGTTATTTTCTTCAAATACAGACTGATGTGGTTTTAACCAAAGT
 TGAAGTTTGGAGTCAAAAATAATCTTATCAATGTAGAAGAAGAAATGTCAGCGGCCCTAGATGCATTCTGT
 AGTTGGAAGAAAATGCGATTGGCAATCGTGTTAGACATGATATCATACACCTTTTTGTCAGACACAATT
 ATGTTAAATTTTTAGGTATGGCTAAATAGGTCAAGTTTGTAACTCTTAACTGTGCAGTTAACAGTTT
 TCTTACTGATTCGTTATCATATCTGGCATTTCATCGTAGCACATGAGATGGGTATAAATTGGGCATGAAG
 CATGATGGAAGTGCATGTACATGTGGGTTACATACATGCATAATGTACCCATATGCATATATTTCCAA
 AATTCAGTAACGTAGTTATGAAGAAATGTTTTCAAGTTGTCAACAGAAGAAGTTGCTTGTACAATATTC
 AGATGCATAAAAACAATAACACTGGTGGCCACCATGTGTGGCAATAAATTGGTTGAAGAAGGAGAGCAG
 TGTGATTGTGGAACTCTGAATCCTGTTTACAAGATCCTTGCTGTAGCAGCGACTGTGTTCTCAAACCTG
 GTGCTAAATGTGCTTTTGGACTGTGTTGCAAAGATTGCCAGTTCCTTCAAACAGGCACTGTGTGTAGACA
 AGAGAAAATGAGTGTGACCTTCCAGAGTGGTGAATGGAACCTCAGGTGAGTGTCCAGGAGATGTGTAT
 AAAGCAGATGGAATCCGTTGCAGTCGTGGTGGTTATTGCTATAAAATGGAATGTCAACGACATGATAGGC
 AGTGTCCGGAGATTTTTGGCAAGAGAAGTAGAAGTGCAGATGAAATTTGCTACATGGAAATGAACAGACG
 TGGTGACCGCTTTGGAACTGTGGCAATGATAGCTCTATGTATAAAAGATGCGAGCTCACTGATGTACTC
 TGTGGGCGAATTCAGTGTGAGAATGTGATAAACTTCCCAAAGGAGAAACCATGAGACAGTGCATTATA
 CTCACCTCAGTAATAACACCTGCTGGACGATGGACTATCATTTTGGGATCACCATAGATGACGTTGGAGC
 AGTGAGCGATGGCACACCTTGTGCTCCAGACCATATATGTCTCGACAGAAAGTGTGTCAGCAAGTCTGTT
 CTGGTAAGTAACTGTACACCACACTTATGCCATATGCAAGGAGTCTGCAACAATAAACACCACTGCCATT
 GTACTAACACATGGGAACCACCGGACTGTCAACTACATGGCCATGGAGGTAGTATAGACAGTGGACCACC
 TCCAGTGCCTTTATCTCCTTCCAATTGGAGTATGTACTTCTAGCTTTTATAATTATGTATGTGCTTGGC
 TTTATTGCTTTGTATGGCATTCTGAATTAAGGAAAAAACTCCTAAAAGAATCGGTGCCAGAATCAGATT
 CTGGTGATAAAAATCTCACTAGAAAACAACAGGATCTC

ACGCGTACGCGGCCGCTCGAG - GFP Tag - GTTTAA

Protein Sequence: >MG212507 representing NM_001025240
 Red=Cloning site Green=Tags(s)

```

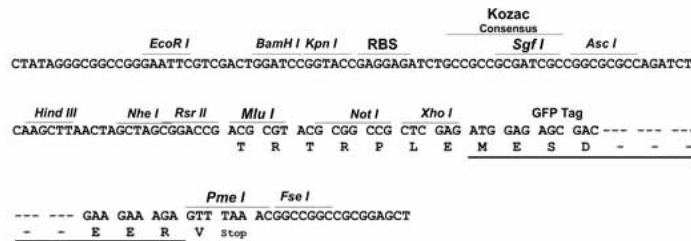
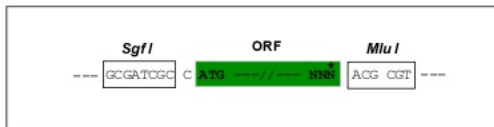
MTGAKVVVHKRNMFLKFCLWTMFFFSAYSPIGHAKYSSLPEVVTPLRVTVTRGNSSPGWLSYLSIGGQ
RHIITMKPKENLISRNFLFTYSDQGDLEEHPFVQNDCCYHGYVDEDPESLIVNTCFGSLQGTLEING
TIYEIMPRSKTSTFEHLAYKMDSGESESPMRCGLSEEEIAQQMNLQESNASTLLQIPYENWTHHRFID
YFVVVIDHNCYVHRNNNTTTCIQDMLQVNGINGYFLQIQTDVVLTKVEVWSQNNLINVEEEMSAALDAFC
SWKKNAIGNRVRHDI IHLFVRHNYVKFLGMAKLGQVCLTLNCAVNSFLTDSL SYLAFIVAHEMGNLGMK
HDGSACTCGLHTCIMYPYAYISPKFSNCSYEEMF SVVNRSSCLYNIPDALKTITLVPTMCGNNLVEEGEQ
CDCGNSESLQDPCSSDCVLPKPAKAFGLCCKDCQFLQTGTVCRQEKNECDLPEWCNGTSGECPGDVY
KADGIRCSRGYCYKMECQRHDRQCREIFGKRSRDAEICYMEMNRRGDRFGNCGNDSSMYKRCCLTDVL
CGRIQCENVIKLPQRNHETVHYTHFSNNTCWMDYHFGITIDDVGAVSDGTPCAPDHICLDRKCVSKSV
LVSNTPHLCHMQGVCNNKHHCHCTNTWEPPDCQLHGHGGSIDSGPPPVPPLSPSNWSMYFLAFIIMYVLG
FIALYGIRELKLLKESVPESDSGDKNLTRKQDDL
  
```

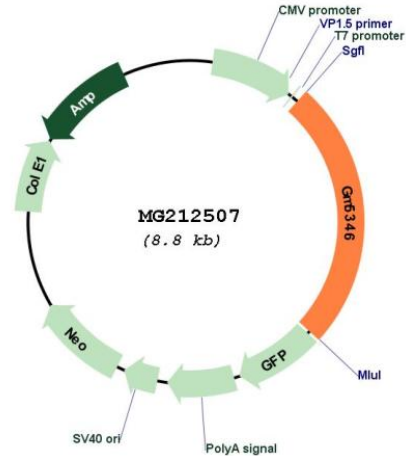
TRTRPLE - GFP Tag - V

Restriction Sites: SgfI-MluI

Cloning Scheme:

Cloning sites used for ORF Shutting:



Plasmid Map:


ACCN: NM_001025240

ORF Size: 2208 bp

OTI Disclaimer: The molecular sequence of this clone aligns with the gene accession number as a point of reference only. However, individual transcript sequences of the same gene can differ through naturally occurring variations (e.g. polymorphisms), each with its own valid existence. This clone is substantially in agreement with the reference, but a complete review of all prevailing variants is recommended prior to use. [More info](#)

OTI Annotation: This clone was engineered to express the complete ORF with an expression tag. Expression varies depending on the nature of the gene.

Components: The ORF clone is ion-exchange column purified and shipped in a 2D barcoded Matrix tube containing 10ug of transfection-ready, dried plasmid DNA (reconstitute with 100 ul of water).

Reconstitution Method:

1. Centrifuge at 5,000xg for 5min.
2. Carefully open the tube and add 100ul of sterile water to dissolve the DNA.
3. Close the tube and incubate for 10 minutes at room temperature.
4. Briefly vortex the tube and then do a quick spin (less than 5000xg) to concentrate the liquid at the bottom.
5. Store the suspended plasmid at -20°C. The DNA is stable for at least one year from date of shipping when stored at -20°C.

RefSeq: [NM_001025240.2](#)

RefSeq Size: 2211 bp

RefSeq ORF: 2211 bp

Locus ID: 384813

Cytogenetics: 8 A4