

Product datasheet for **MG212458**

Zscan18 (NM_001017955) Mouse Tagged ORF Clone

Product data:

Product Type:	Expression Plasmids
Product Name:	Zscan18 (NM_001017955) Mouse Tagged ORF Clone
Tag:	TurboGFP
Symbol:	Zscan18
Synonyms:	EG232875
Mammalian Cell Selection:	Neomycin
Vector:	pCMV6-AC-GFP (PS100010)
E. coli Selection:	Ampicillin (100 ug/mL)



[View online »](#)

ORF Nucleotide Sequence:

>MG212458 representing NM_001017955
 Red=Cloning site Blue=ORF Green=Tags(s)

TTTTGTAATACGACTCACTATAGGGCGGCCGGAATTCGTCGACTGGATCCGGTACCGAGGAGATCTGCC
 GCC**CGGATCGCC**

ATGCTGCCTTTGGAGAGGGTGTAGCCTCTCTAGAACTCTCCACCCCAACCAGAACCATCTACTCTGC
 GGTCAAAAGATACAGTACAGCAGGAAGAACCTGGCCAGCAGGAGGAACCCATCCAGCAGGAAGGACTCAT
 TAAGCAACAAGAACCTAGCCAGCAGGAGGAATGCAGGAGGCAGGATGAACTCATCCGAAAAGAAGAACCC
 ATCCAGCTGCTGGAACTAGTCAGAGGGAAGAAGCTCAGTGAGCAGCAAGAACCCTAGTCAACAGGATGAGC
 CCAGTCAAGAGGAAGAGTCTGTCCAAGTCAAGAACCAGCCAGTGGGGAGAACCCTGGCCAAAAGGATGT
 ACCCATGCAGCAGGAAGAACCCTATGCAGCAGGATGAGCCAGCCAGTGGGAAGAACCCTGCAGCAAGAT
 GAACCCATGCAGCAGGAAGAACCCTATGCAGCAGACAGAGCCATTGAACAGGATAAGCCCATCCAACAGG
 AAGAACCACCCAGCAGGAGGAGCCATTAGCAGGATGCTTCCATCCAACGTGAACTATTATCAGGT
 GAGGCCATCCAGAAGGAATTGATTCTGCGGGAGGAGTTCATTAGCAGGATAAGTGCACCCAAAAAGAA
 GAATTTATTAGCAAGAGAAGCCAATTCAGCAGGTAAGGTTCAAGTGAACAGGAGGAACCCAGCCAGCAGG
 AGGAATCCAGCCAGCAGGAGGAATCCAGCCAGCAGGAGGAGCTCAGTCAACAGAAGGAGTCTAGCCAGAA
 GGCTCAACCATACCAACAGGAGGAACCCAGCCAACAGCAAGAGCCTAGCCAGAAGGATCAACCCAGCCAG
 CAGGAGGAACCCAGCCAACAGCAAGAGCCTAGTCAGAAAGATCAACCCAGCCAGCAGGAGGAGCTCAGCC
 AACAGGAAGAGCCTAGCCAGAAGGATCAATGCAACCAACAGGAGGAACCCAGCCAACAACAAGAGCCTAG
 CCAGAAGGATCAACCAACCAACAGGCAGAACTCAGCCAACAGGAAGAGCCTAGCCAGAAGGATCAATGC
 AACCAACAGGAAGAGCCTAGCCAGAAGGATCAATGCAACCAACAGGAAGAGCCTAGCCAGAAGGATCAAC
 CCAACCAAGGAAGAGCCTAGCCAGCTGAAGGAACAGAAACCCTCAGTGAAGATCTGCTGCTGCTGCT
 CGAGTTTTCCCGCTCCGCTCCGGGAGTTTGTCTACCAGGAGGCAGCTGGGCCTACCAGACTTTGGCC
 AGGCTTATGAGCTATGCCGCCAGTGGCTGAGGCCGAGGCCTGCTCCAAGAGCAGATCCTGGAGCTGC
 TCGTTCTGGAGCAGTTCCTGGGCATCTTCCAGACAGGGTCCGTCCCTGGGTGGTAGCCAGTATCCCGA
 GAATTGCAAGAAAGCTGCCTCCCTGGTGGAGGGTATCTCTGACATCCTGGAGGAGCCAGGAATGATGTTG
 TGTTCCCGGGTGGTGCATCATCGTCATTAGCGAGGGAGACTATGAGAGGTGCTCCTGAGCCCTGCTGC
 TACCATGTGGGTGCTAAGTCTAACAGAACTTAAGACCTAGGGACATCCTGGTACGCCGTGATACTTC
 TCCCCTTCTACCAGCTTGGCCTACTCTGGAATCTGTGCATTTGGATCAAGAGCGTACAGAGGGAGAAAAG
 AGTAAAGAGGCCAACGCTGCCACAGCTGAGCTGAAGGGGCTCTACAGTCGGAATGGGACCACCTGGATC
 CCACAGAGGATAACCTGACGAGTTACAGCAAGCTGCTCCTGTGGGGGTGTCAGTTTTCCAGGCTGGTCC
 AACTTCCATGCTGGAGACAGAGGAACCTTGTGCGGTGGAAAACCTGCCAGGGGGCAGCCTCCAGACAGC
 ACCAGGCAGCAGGAAAGCAAAGGAAATGTGTGTGAGGAAGTCTCCCTGGGGGAGACACTGATGGAGAGTC
 TTTAGGGGATGTTTCTGTTAGTGTCTCAATAGATACTGCCCTGGAGGAGGAACAGCAACCTCAGAAGGC
 TCTGGATGCCGAGGGTGAAGATTAAGCCCTGCCAGTCCCAGAGGCAATCAGTCATCCAGCAGTCAGCC
 CAGGACAAGGATAGGCCACATCAAGGCACTGGGACAAAGAGGCCCCATCCAGATGACGAGGATGAAATGG
 CCCCTGAGTGTCTTTCCAGCACCAGCAGCTACCAGCTGCCATTTGATGCAGGGAAAGTGTTCATGTGGA
 TGGTCATGATTCTGGGCAGGACTCAGAACTTCTGCTGGGGGATGCTCTCAGCTGATAAGTCTGATGCA
 TCTCAAGGGAAGCCCTACACATGCAGTGAATGTGGGGAGGCCTTTGCATGGATCTCAACCTTATGGAGC
 ATCACAAGAGTATGGCAGTGAGACATGCTATGTGAGCCAGGGCTGC

ACCGTACGCGGCCGCTCGAG – GFP Tag – GTTTAA

Protein Sequence: >MG212458 representing NM_001017955
 Red=Cloning site Green=Tags(s)

```

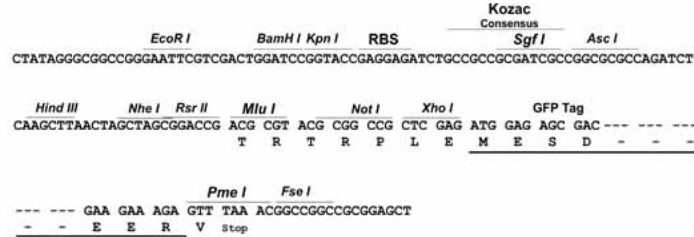
MLPLERVLASPRSSPPQPEPSTLRSKDTVQQEEPGQQEETIQEGLIKQQEFSQQEECRRQDELIRKEEP
IQLLETSSQREELSEQEFSQQDEPSQEEESVQLQEPSQWGEFGQKDVPMQQEPMQQDEPSQWEEPQQD
EPMQQEELMQQTEPIEQDKPIQQEELTQQEPIQQDASIQREL IHQVRPIQKELILREEFIQQDKCTQKE
EFIQQEKPIQQVRFSEQEFSQQEESQQEESQQEELSQQKESSQKAQPYQQEFSQQEFSQKQDQPSQ
QEFSQQEFSQKQDQPSQQEELSQQEFSQKQDQCNQQEFSQQEFSQKQDQPNQQAELSQQEFSQKQDQ
NQQEFSQKQDQCKQQEFSQKQDQPNQQEFSQKQDQCNQQEFSQQEFSQKQDQPNQQAELSQQEFSQKQDQ
RLHELRCRWLRPEACSKQIPELLLVLEQFLGILPDRVRPWVVAQYPENCKKAASLVEGISDILEEPGMM
L CSPGGSSSFSEGDYERCPPELLPCGLLSPNRNLRPRDILVRRDTSPLLPWPTLESVHLDQERTEGK
SKEANAATAELKGPLQSEWDHLDPTEDNLTYSKLLWGCQFSQAGPMSMLETEEPCAVENLPGGSLPDS
TRQQESKGNVCEEVSLGETLMESLSGDVPVSASIDTALEEEQQPQKALDAEGEDSSPASPQRQSVIQSA
QDKDRPHQGTGTRPHPDDEDEMAPECLSSSTSSYQLPFDAGKVLHVDGHDGSGQDSGTSAGGCSSADKSDA
SQGKPYTCSECGEAFAWISNLMEHHKSHGSETCYVSQGC
  
```

TRTRPLE - GFP Tag - V

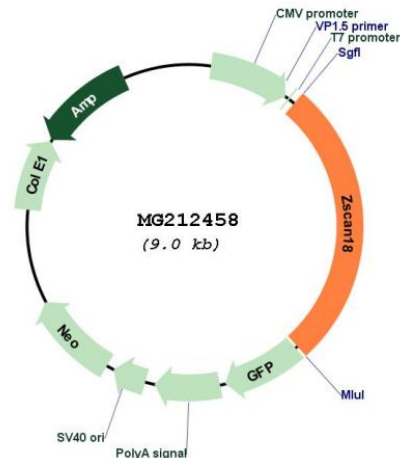
Restriction Sites: Sgfl-Mlul

Cloning Scheme:

Cloning sites used for ORF Shutting:



Plasmid Map:



ACCN: NM_001017955

ORF Size: 2427 bp

OTI Disclaimer: The molecular sequence of this clone aligns with the gene accession number as a point of reference only. However, individual transcript sequences of the same gene can differ through naturally occurring variations (e.g. polymorphisms), each with its own valid existence. This clone is substantially in agreement with the reference, but a complete review of all prevailing variants is recommended prior to use. [More info](#)

OTI Annotation: This clone was engineered to express the complete ORF with an expression tag. Expression varies depending on the nature of the gene.

Components: The ORF clone is ion-exchange column purified and shipped in a 2D barcoded Matrix tube containing 10ug of transfection-ready, dried plasmid DNA (reconstitute with 100 ul of water).

Reconstitution Method:

1. Centrifuge at 5,000xg for 5min.
2. Carefully open the tube and add 100ul of sterile water to dissolve the DNA.
3. Close the tube and incubate for 10 minutes at room temperature.
4. Briefly vortex the tube and then do a quick spin (less than 5000xg) to concentrate the liquid at the bottom.
5. Store the suspended plasmid at -20°C. The DNA is stable for at least one year from date of shipping when stored at -20°C.

RefSeq: [NM_001017955.3](#)

RefSeq Size: 3626 bp

RefSeq ORF: 2430 bp

Locus ID: 232875

Cytogenetics: 7