

Product datasheet for **MG212441**

4933405L10Rik (NM_027655) Mouse Tagged ORF Clone

Product data:

| | |
|---------------------------|---|
| Product Type: | Expression Plasmids |
| Product Name: | 4933405L10Rik (NM_027655) Mouse Tagged ORF Clone |
| Tag: | TurboGFP |
| Symbol: | 4933405L10Rik |
| Mammalian Cell Selection: | Neomycin |
| Vector: | pCMV6-AC-GFP (PS100010) |
| E. coli Selection: | Ampicillin (100 ug/mL) |
| ORF Nucleotide Sequence: | >MG212441 representing NM_027655 Red=Cloning site Blue=ORF Green=Tags(s) |

TTTTGTAATACGACTCACTATAGGGCGGCCGGAATTCGTCGACTGGATCCGGTACCGAGGAGATCTGCC
GCC**CGATCGCC**

ATGGCCTCAGAAGGGGCCAAGAGGCAGCCAGAAACCCAGAATGGGGCAGCAGTAGGGTTAGCCCAGGTTG
CAGAGAGCCTTGAGTGTCCAGGAACAGAAGAGTGTCTGGTGCCGGCACATGAGACCTGCAGGAGCCCAGG
CGAAGACAAGTGTCCCGTGGGGCACAGCTTAGAGCCAGAGCTCCAGGAGGAAGGAATAAAGGTGGGAGAG
GAAGGGCTCAATGCAGGGGTGGAAGCAGGAGAGGAGAGAGAGGCCAAGCCTACGTCATCCATCGTGAGAC
CAGCTCATGGGCCAAGAGAAAAGTCAGAAGTTGAGCTGCCACCGGGGGTGTGCAGAAGAAGGAGGAGCC
AGAAGGCAGCCACAGTGAATCCTCACTGTCTCGAAACAGCACAAAAAGCCAAGAAACGCAAGAGTGGC
GGGGCTCCTGTGCCGCCGCTGTGGCCAGCGCATCCGCACCCGCCGCGAGACCTTGGGGTTGGAGCCCT
TTGCTCTGCCTTGGGTTCTTGCAAGAAAAGCCAGCGCCTGCGGCCACTGTACCAATACATCAACTACTG
CAACCCAGAGCTGAATCAGGAGGAGGACGGGGACAGGGAGCCCGAGGTAGAGCCTGAGGCCGAGTTAGCA
CTGGTTCCCGAGGAGCCGGGCGTGAACAGCTGCAGCTGCAGACCTTGTGCCCGTGGCAGGTGAGCTGG
GCTTAGGCCTTGCTTTACCCTGCCCTAATCCGTTAGTGCCACTGACCCATAATCTTCTCCTCTGGTAGA
GGAGGTTGGAGAGGAGCCTGGGGTCTGTCTAGTCTGAGGGTGTGAGGAGCCTCAAGGCTGAGGTGGAT
AAGACGACGCAAGTGGATATCGACAAGATGTTGAGTGTCTGTGCTGCCCTCTTGTGCCCTCTATCCC
CTCAGTACAAG

ACGCGTACGCGGCCGCTCGAG - GFP Tag - GTTTAA



[View online »](#)

Protein Sequence: >MG212441 representing NM_027655
Red=Cloning site Green=Tags(s)

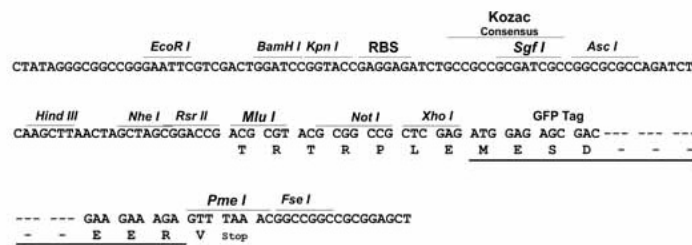
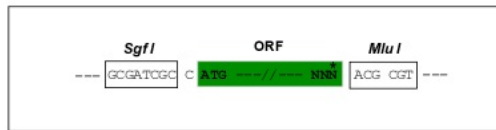
MASEGAKRQPETQNGAAVGLAQVAESLECPGTEECLVPAHETCRSPGEDKCPVGHSLPELQEEGKVKGE
 EGLNAGVEAGEERGPKPTSSIVRPAHGPKRKSEVELPPGVLQKKEEPEGSHSESSLSSKQHKKAKKRKSG
 GAPVPPAVASASAPAAETLGLEPFALPWVLAGKAQRLRPLYQYINYCNPELNQEEDGDREPEVEPEAELA
 LVPEEPGVEQLQLQTLTPVAGELGLGLALPCPNPLVPLTHNLPPLVEEVGEEPGLSSLRVSGSLKAEVD
 KTTQVDIDKMLSVCAAPLVPLSPQYK

TRTRPLE - GFP Tag - V

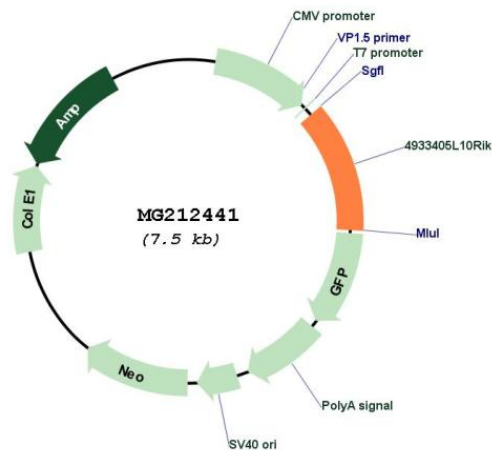
Restriction Sites: SgfI-MluI

Cloning Scheme:

Cloning sites used for ORF Shutting:



Plasmid Map:



ACCN: NM_027655

ORF Size: 921 bp

| | |
|-------------------------------|---|
| OTI Disclaimer: | The molecular sequence of this clone aligns with the gene accession number as a point of reference only. However, individual transcript sequences of the same gene can differ through naturally occurring variations (e.g. polymorphisms), each with its own valid existence. This clone is substantially in agreement with the reference, but a complete review of all prevailing variants is recommended prior to use. More info |
| OTI Annotation: | This clone was engineered to express the complete ORF with an expression tag. Expression varies depending on the nature of the gene. |
| Components: | The ORF clone is ion-exchange column purified and shipped in a 2D barcoded Matrix tube containing 10ug of transfection-ready, dried plasmid DNA (reconstitute with 100 ul of water). |
| Reconstitution Method: | <ol style="list-style-type: none">1. Centrifuge at 5,000xg for 5min.2. Carefully open the tube and add 100ul of sterile water to dissolve the DNA.3. Close the tube and incubate for 10 minutes at room temperature.4. Briefly vortex the tube and then do a quick spin (less than 5000xg) to concentrate the liquid at the bottom.5. Store the suspended plasmid at -20°C. The DNA is stable for at least one year from date of shipping when stored at -20°C. |
| RefSeq: | NM_027655.2 |
| RefSeq Size: | 1124 bp |
| RefSeq ORF: | 924 bp |
| Locus ID: | 71046 |
| UniProt ID: | Q9D4A5 |
| Cytogenetics: | 8 |