

## Product datasheet for **MG212430**

### Carnmt1 (NM\_026120) Mouse Tagged ORF Clone

#### Product data:

**Product Type:** Expression Plasmids  
**Product Name:** Carnmt1 (NM\_026120) Mouse Tagged ORF Clone  
**Tag:** TurboGFP  
**Symbol:** Carnmt1  
**Synonyms:** 2410127L17Rik  
**Mammalian Cell Selection:** Neomycin  
**Vector:** pCMV6-AC-GFP (PS100010)  
**E. coli Selection:** Ampicillin (100 ug/mL)  
**ORF Nucleotide Sequence:** >MG212430 representing NM\_026120  
Red=Cloning site Blue=ORF Green=Tags(s)

TTTTGTAATACGACTCACTATAGGGCGGCCGGAATTCGTCGACTGGATCCGGTACCGAGGAGATCTGCC  
GCC**CGATCGCC**

ATGCAGCGACGACAGCGCTCCGCCGCTCTCAACCGCCAGGACGGCGGGCGAAGCGAGGACGTGG  
AGGTGCAGTTCTCCGCCGGCGTTGGGCTCGGCCGCGCTCGGGGCCCGCGCGCGCACCGCGGA  
GGACGAGGAGCGGCTGGAGCGGAGCACTTCTGGAAGTCATCAACGCGTTCCGCTACTACGGCACCAGC  
ATGCATGAACGAGTGAACAGAACAGAAAGACAGTTTCGGTCCCTCCAGAGAACCAGCAGAACTGCTTC  
CTCAGTTTCTCTCACTTGGACAAGATCCGAAATGCATTGACCATAATCAGGAAATCTGCTGACCAT  
TGTGAATGATTGCATACATATGTTTCGAAAATAAAGAATATGGAGAAGATGCCAATGGAAAGATTATGCCA  
GCATCTACATTTGACATGGATAAGTTAAAACTCACTGAAACAGTTTGTAAAGAGACTGGAGTGAGACCG  
GGAAAGCAGAAAGGGACGCTGTATAAGCCAATCATTAAAGAGATTATCAAAAATTTCCAAAAGGAGAG  
ATGGGATCCTTCTAAAGTAAATATTCTGGTACCTGGTCTGGACTAGGAAGATTGGCCTGGGAAGTAGCT  
ATGCTAGGTTATGCTTGTCAAGGAAATGAATGGAGTTTTTTATGCTCTTTCTTCCAACTTTGTACTCA  
ACAGATGTTCCGAAATTAACAAATATAAACTTTATCCCTGGATCCATCAGTTTAGCAATAATCGGAGATC  
AGCTGATCAGATCCGACCATTTCTTTCCCTGATGTTGACCCACAGTCTTCTCTCTGGTCTAACTTT  
TCCATGACAGCAGGAGACTTTCAGGAGATTTACTCTGAATGCAATGCCTGGGACTGATTGCCACCTGTT  
TCTTCATAGACACAGCTACAATGTAATTGATTATATTGATACGATATGGAGAATACTCAAGCCAGGTGG  
AATCTGGATAAATCTTGGTCTCTACTATACCATTTTGAATACTGGCAAATGAACTGTCTATAGAATTG  
AGCTATGAGGATATAAAAATGTTGTTCTTCAAGTATGGATTTTCAGCTAGAGGTGGAGAAAGAATCTGTAT  
TGTCAACATATACTGTGAATGATCTCTATGATGAAATACTACTATGAGTGTGTTTTGTTGTGGTCCG  
GAAGCCACAA

AGCGGACCGACGCGTACGCGGCCGCTCGAG - GFP Tag - GTTTAA



[View online >](#)

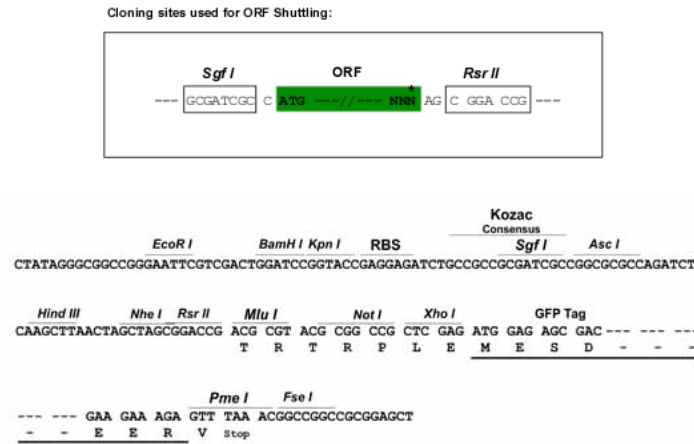
**Protein Sequence:** >MG212430 representing NM\_026120  
 Red=Cloning site Green=Tags(s)

MQRRQRAPPASQPAQDGGRESDVEVQFSAGRLGSAAPAGPPARGTAEDEERLEREHFWKVINAFRYYGTS  
 MHERVNRTERQFRSLPENQQKLLPQFPLHLDKIRKCIDHNQEILLTIVNDCIHFENKEYGEDANGKIMP  
 ASTFDMDKLKSTLKQFVRDWESETGKAERDACYKPIIKEIKNFPKERWDPKVNILVPGAGLGRLEWEVA  
 MLGYACQGNWSFFMLFSSNFVLRNRCSEINKYKLYPWIHQFSNNRRSADQIRPILFPDVPDPSLPPGSNF  
 SMTAGDFQEIYSECNADCIAATCFIDTAHNVIDYIDTIWRILKPGGIWINLGPLLYHFENLANELSIEL  
 SYEDIKNVVLQYGFQLEVEKESVLSITYVNDLSMMKYYYECVLFVVRKPKQ

SGPTRRRLE - GFP Tag - V

**Restriction Sites:** SgfI-RsrII

**Cloning Scheme:**



**ACCN:** NM\_026120

**ORF Size:** 1200 bp

**OTI Disclaimer:** The molecular sequence of this clone aligns with the gene accession number as a point of reference only. However, individual transcript sequences of the same gene can differ through naturally occurring variations (e.g. polymorphisms), each with its own valid existence. This clone is substantially in agreement with the reference, but a complete review of all prevailing variants is recommended prior to use. [More info](#)

**OTI Annotation:** This clone was engineered to express the complete ORF with an expression tag. Expression varies depending on the nature of the gene.

**Components:** The ORF clone is ion-exchange column purified and shipped in a 2D barcoded Matrix tube containing 10ug of transfection-ready, dried plasmid DNA (reconstitute with 100 ul of water).

**Reconstitution Method:**

1. Centrifuge at 5,000xg for 5min.
2. Carefully open the tube and add 100ul of sterile water to dissolve the DNA.
3. Close the tube and incubate for 10 minutes at room temperature.
4. Briefly vortex the tube and then do a quick spin (less than 5000xg) to concentrate the liquid at the bottom.
5. Store the suspended plasmid at -20°C. The DNA is stable for at least one year from date of shipping when stored at -20°C.

**RefSeq:** [NM\\_026120.2](#)

**RefSeq Size:** 2138 bp

**RefSeq ORF:** 1203 bp

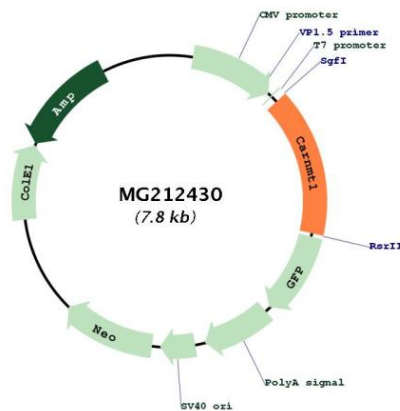
**Locus ID:** 67383

**UniProt ID:** [Q80UY1](#)

**Cytogenetics:** 19

**Gene Summary:** N-methyltransferase that mediates the formation of anserine (beta-alanyl-N(Pi)-methyl-L-histidine) from carnosine. Anserine, a methylated derivative of carnosine (beta-alanyl-L-histidine), is an abundant constituent of vertebrate skeletal muscles. Also methylates other L-histidine-containing di- and tripeptides such as Gly-Gly-His, Gly-His and homocarnosine (GABA-His).[UniProtKB/Swiss-Prot Function]

### Product images:



Circular map for MG212430