

Product datasheet for **MG212415**

Fbxl18 (NM_001033312) Mouse Tagged ORF Clone

Product data:

Product Type:	Expression Plasmids
Product Name:	Fbxl18 (NM_001033312) Mouse Tagged ORF Clone
Tag:	TurboGFP
Symbol:	Fbxl18
Synonyms:	AI427077; B130019G13Rik; C330021B20Rik
Mammalian Cell Selection:	Neomycin
Vector:	pCMV6-AC-GFP (PS100010)
E. coli Selection:	Ampicillin (100 ug/mL)



[View online »](#)

ORF Nucleotide Sequence:

>MG212415 representing NM_001033312
 Red=Cloning site Blue=ORF Green=Tags(s)

TTTTGTAATACGACTCACTATAGGGCGGCCGGGAATTCGTCGACTGGATCCGGTACCGAGGAGATCTGCC
 GCC**CGCATCGCC**

ATGTCCAGTGAGGAGGAGGCAGCGGCAGAGGCAGCAGGTGACACCCACCTGCTTGGCTTCTCCGATGAGA
 TCCTCCTACACATCCTGAGCCATGTCCCAGCACGGACCTGGTTCTCAGTGTGCGGCGCACCTGCAGGAA
 ACTGGCAGCCCTGTGCCTGGACAAGAGCCTGGTGACACCCGTGCTGCTGCAAGGACTACCAGGCCAGT
 GAGGAGAAGGTGAAGCAACTGGTGAAGGAGATTGGCCGGGAGATCCAACAGCTGAACATGGCAGGCTGCT
 ATTGGTTGTCTGGCTCCACCATCGAGCAGTGGCCGGTGTACAGCCTGGTGAAGGTGAACTTGTGAGG
 TTGCCACCTCACCTCGCTGCGGCTGTCCAAGGTGCTCTCGGCCCTGCAGCACCTGCGCTCATTGGCCATT
 GACGTGAGCCCCGGCTTCGACGCCAGCCAGCTGAGCAGTGAAGGCCACGTAAGCCCGCTGCAGG
 AGCTCAAGCAGACTCTTCACGCCGTCTACGGGGTGGTCCCTGCTGTGCCAGCTGCAGAAGCTGCT
 GCTCTACTTCGAGATCCTGGACCGACCCGGGAGGGGGCCGTCTCTCGGCCAGCTCATGGTGGCCAG
 AGCAACGTGCCCACTACCAGAACCTGCGTGTCTTCTATGCACGCCTGGCTCCTGGCTACATCAACCAGG
 AGGTGGTGAAGTCTACCTGGCCGTGCTCAGCGACCGCACGCCTGAGAACCTGCATGCCTTCTCATCTC
 CGTCCCTGGCAGCTTTCAGAGAGCGGGGCCACCAAACTTGGTGGACTCCATGGCCCGCAACGTGGCC
 CTGGATGCACTGCAGTGCCTCAAGTCTGGCTCAATGGCTCCACCCTCCTCCAGCATATGAAATCAACA
 ATCCCTTCTACTTCAGCTTCAGCCGGTGTACGCTGTGAGGGGGTACCTGATTGACGGGCTCATCAATGG
 CGGAAGGACCTGCGTAGCCTGGCCAGCCTCAACCTCAGCGGTGTGTGCATTGCCTGTCTGCGGACTCG
 TTGCTGCGCAAGGCCGAGGACGACATTGACAGCAGCATCCTGGAGACTCTGGTGGAGTCTGTGCAACC
 TGCACCACCTCAATCTCTCTGCGGCCATCACCACAGCTCCGACGGCCTGGGCCGCCACCTTGCCAGT
 CCTGGCTCGGCTCTGCCACCTGCGTTCCTGTCCCTGCCGTGTCTGCTCTGTGGTGAAGTCCGACCCAGG
 CCTGACCGTGCGCCCGCCCGCCAGCCATGCACGCAAGTACCCCGTGGATTTGGCAAGAAGGTGCGCATTG
 GGGTGCAGACCTGTCCCAACCCCTTCGTGGGCCAGTGGCCCGCACAGCCTGCCTCTGTGTTCTGGTCTCT
 GCTGAAGAAGCTCCCATTTCTGGAGCACCTGGAAGTGTGCGGTCCAATTTCTCCTCAGCCATGCCCCGC
 AATGAGCTGCCATCCGCAACTCCCTCCACCCTGCAGTGGGCACAGAACGTTGGGGGACTCAGAGGTGG
 CCGCCATTGGCCAGCTGACCTTCTGCGGCACCTGACTCTAGCCCACTGCCAGGCATGCTCACGGGCTC
 CGGACTCGTGAGCATCGGTCTCCAGTGCAGCACCTGCAGTCTCTATCGCTGGCCAACTGGGCATGATG
 GGAAGGTGGTGTACATGCTCTTGTGACATGCTGAAGCACTGCAAGCGGCTGAAGGACCTCAGGT
 TGGAGCAGCCCTACTTCAACGCCAACGCTCAGTCTTCCAGGCACTGGGCCAGTGTCTGCTCTGCAGCG
 CCTGTGCCTGGTATCTCGCAGCGGCACCCTGCAGCCAGATGCCGTGCTGGCCTTATGGCCCGTTGCTG
 CAGGTCGTGATGTGACATGTTACCGGAGAATCCCTTACCACCTGCAAGAGCCTGCAGCAGTCCGCTCC
 TCCGGAGTTTCCAGGCCGAGAGGCCCGCTTGAACGTGCTCATCTTCCCCTGCTCCACGAGGGCCCTGAC
 AGATGTCATCCGAGATGTCCCATGCTGCACCTGGATGAGATCACCTTGTCAAAGCCGTGTGGCTGAG
 GAACCGCCCAACCTATGGTGG

ACGCGTACGCGGCCGCTCGAG - GFP Tag - GTTTAA

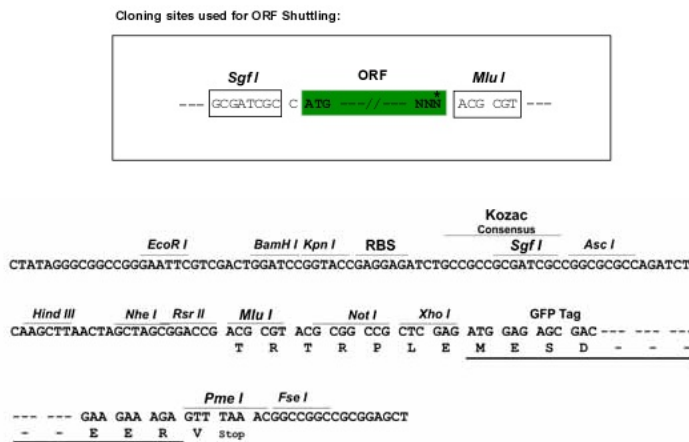
Protein Sequence: >MG212415 representing NM_001033312
 Red=Cloning site Green=Tags(s)

```
MSSEEEAAAEEAGDTHLLGFSDEILLHILSHVPSTDLVLSVRRTCRKLAALCLDKSLVHTVLLQKDYQAS
EEKVKQLVKEIGREIQQLNMAGCYWLSGSTIEHVARCHSLVKVNLSGCHLTSLRLSKVL SALQHLRSLAI
DVSPGFDASQLSSECKATLSRVQELKQTLFTPSYGVVPCASLQKLLL YFEILDRREGAVLSGQLMVGQ
SNVPHYQNLRVFYARLAPGYINQEVVRLYLAVLSDRTPENLHAFLLISVPGSFAESGATKNLLDSMARNVA
LDALQLPKSWLNGSTLLQHMKFNNPFYFYSRCTL SGGHLIQRLINGGKDLRSLASLNL SGCVHCL SADS
LLRKAEDDIDSSILETLVESCCNLHHLNLSAAHHHSSDGLGRHLCQLLARLCHLRSLSLPVCSVADSAPR
PDRAPAPPAMHAVPRGF GKKVRIGVQTCPNPFVGSAPQPASVFWSLKLLKLPFLEHLELIGSNFSSAMPR
NEPAIRNSLPPCSRAQNVGDSEVAAIGQLTFLRHLTLAQLPGMLTGSGLVSIQLQCQHLQSLANLGM
GKVVYMPALADMLKHCKRLKDLRLEQPYFNANAQFFQALGQCSSLQRLCLVSRSGTLQPDVAVLAFMARCL
QVVMCHMFTGESLTTCKSLQQSLLRSFQAERPALNVVIFPLLHEGLTDVIRDVPMLHLDEITL FKSRAE
EPPNLWW
```

TRTRPLE - GFP Tag - V

Restriction Sites: SgfI-MluI

Cloning Scheme:



ACCN: NM_001033312

ORF Size: 2121 bp

OTI Disclaimer: The molecular sequence of this clone aligns with the gene accession number as a point of reference only. However, individual transcript sequences of the same gene can differ through naturally occurring variations (e.g. polymorphisms), each with its own valid existence. This clone is substantially in agreement with the reference, but a complete review of all prevailing variants is recommended prior to use. [More info](#)

OTI Annotation: This clone was engineered to express the complete ORF with an expression tag. Expression varies depending on the nature of the gene.

Components: The ORF clone is ion-exchange column purified and shipped in a 2D barcoded Matrix tube containing 10ug of transfection-ready, dried plasmid DNA (reconstitute with 100 ul of water).

Reconstitution Method:

1. Centrifuge at 5,000xg for 5min.
2. Carefully open the tube and add 100ul of sterile water to dissolve the DNA.
3. Close the tube and incubate for 10 minutes at room temperature.
4. Briefly vortex the tube and then do a quick spin (less than 5000xg) to concentrate the liquid at the bottom.
5. Store the suspended plasmid at -20°C. The DNA is stable for at least one year from date of shipping when stored at -20°C.

RefSeq: [NM_001033312.3](#), [NP_001028484.2](#)

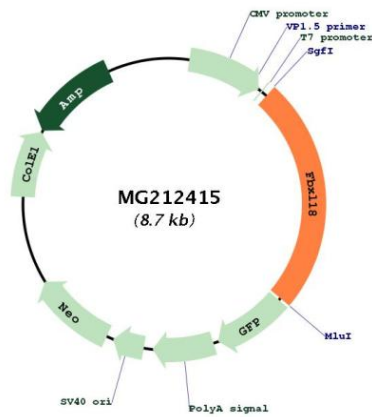
RefSeq Size: 2831 bp

RefSeq ORF: 2124 bp

Locus ID: 231863

Cytogenetics: 5

Product images:



Circular map for MG212415