

## Product datasheet for **MG212364**

### **KIhl32 (NM\_001033531) Mouse Tagged ORF Clone**

#### **Product data:**

Product Type:	Expression Plasmids
Product Name:	KIhl32 (NM_001033531) Mouse Tagged ORF Clone
Tag:	TurboGFP
Symbol:	KIhl32
Synonyms:	6430524H05Rik; D4Ertd389e; Gm1356; mKIAA1900
Mammalian Cell Selection:	Neomycin
Vector:	pCMV6-AC-GFP (PS100010)
E. coli Selection:	Ampicillin (100 ug/mL)



[View online »](#)

**ORF Nucleotide Sequence:**

>MG212364 representing NM\_001033531  
 Red=Cloning site Blue=ORF Green=Tags(s)

TTTTGTAATACGACTCACTATAGGGCGGCCGGAATTCGTCGACTGGATCCGGTACCGAGGAGATCTGCC  
 GCC**CGCATCGCC**

ATGCCGTCTGAACACTGCCTCAGTATTCAAGAAATGCTGACGGGCCAGAGGCTGTGCCACTCGGAAACTC  
 ACAATGACACGGTCTGGCGGCGCTGAATCAGCAAAGAAGTGATGGCATTCTCTGCGACGTGACCCCTGAT  
 CGCCGAGGAACAGAAATCCACGCTCACAGGCGGTCCTAGCAGCCTGCAGTGACTACTTCCGGGAATG  
 TTCAGTCTTTGTATGGTGGAAAGTGAGCCGATGAAGTAAATTTACGTGGTGTGACCAGCCTGGGCTTAA  
 AGCAGGCTCTGGAGTTCCATATACAGGACAGGAACTAAATAGCTTTAATTACTTGGATCTGTACAGACT  
 TGCTGACCTCTTTCACCTCACTTTGTTGGAGAAGGCAGTGATTGACTTCTAGTGAAGCATCTCTCGGAG  
 CTCCTGAAGAGCCGCCAGAGGATGTCTCACGCTGCCCTACTGCCTGCTTACAGGAGGTGCTGAAGAGTG  
 ACCGCTGACGTCCTGAGTGAGGAGCAGATCTGGCAGTAGCTGTGAGGTGGCTGGAACACAATTGCCA  
 TTACCAGCATCTGGACGAGCTCCTGCAGTACATCCGCTTTGGCCTAATGGATGTGGATACACTCCACAGC  
 GTTGCCCTATCCCACCCCTGGTGCAGGCAAGTGAGACGGCAACTGCCCTTGTAACGAGGCCCTGGAAAT  
 ACCACCAAAGCATCTATGCACAGCCTGTGTGGCAGACCCGCCGGACAAAACCGCGATTCCAGTCCGATAC  
 TCTCTATATTATGGTGGGAAGAAGCGTGAGGTCTGCAAAGTCAAGGAACTTCGTTACTTCAATCCTGTG  
 GACCAGGAGAATGCCCTCATAGCCGCCATTGCCAACTGGAGTGAGCTGGCTCCCATGCCGGTGGGAAGGA  
 GCCATCACTGTGTGGCAGTATGGGGGACTTCTGTTTGTAGCAGGAGGAGAAGTGAACATGCCAGTGG  
 CCGGACATGTGCCGTGAGGACAGCCTGTCGCTATGACCCCGCAGTAATCCTGGCAGAGATAGCACCC  
 ATGAAAAACTGCCGGAACATTTTGTGCTGGGTGCCATGGATGAATACCTCTATGCAGTAGGGGGCAGAA  
 ATGAACTGTGCCAAGTTCTACCTACAGTTGAACGATACTGCCCAAGAAGAACAATAATGGACTTTTGTGCA  
 GTCCCTTGACAGATCCCTCTCGTGTACGCTGGATATGTGGCTGATGGTCTTCTTTGGATATCAGGTGGG  
 GTGACAAACACCCACAGTATCAGAACAGACTGATGGTATATGAACCTAACCCAGAATAAGTGGATAAGTC  
 GCAGCCCCATGCTACAGAGAAGAGTCTACCACTCCATGGCTGCTGTCCAAGGAAGCTTTATGTGCTTGG  
 AGGCAATGACCTGGATTACAATAATGACCGGATTCTCGTGCCTCATATAGATTCTTACAACATTGACACT  
 GATCAGTGGACGCGTGTAAATTTCAACTGTTGACTGGCCAGAATGAATCTGGAGTCGCTGTCCATAATG  
 GGAGAATATATTTAGTTGGTGGATTTCAATTTGGACAAATGAGCCTCTGGCTTGTATCCAGGTATTGGA  
 TGTGAGCAGAGAAGGCAAAGAGGAAGTGTCTACGGACCTACACTGCCCTTGTCTCAACGGCATAGCG  
 GCGTGCTTCTCCGGCTCCGTATTTACATGCCCAACCTGCAGACTCTGCAAGTGCCTACCACAGGA  
 TCGGCACTGTC

**ACGCGTACGCGGCCGCTCGAG** - GFP Tag - GTTTAA

**Protein Sequence:**

>MG212364 representing NM\_001033531  
 Red=Cloning site Green=Tags(s)

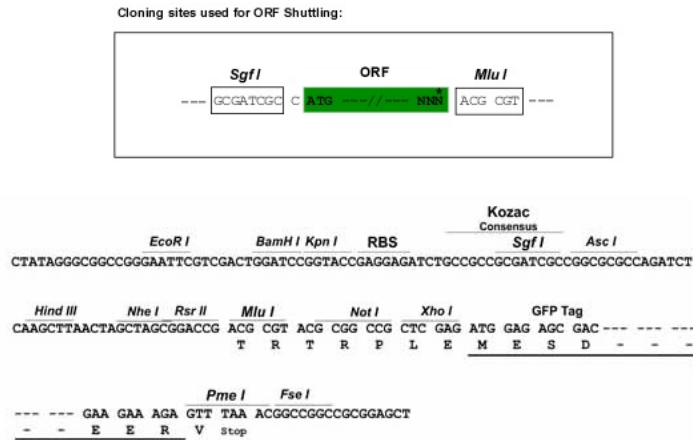
MPSEHCLSIQEMLTGQRLCHSETHNDTVLAALNQQRSDGILCDVTLIAEEQKFHAHKAVLAACSDFRAME  
 FSLCMVESGAEVNLRGVTSGLKQALEFAYTGQELNSFNLDLYRLADLFHLLLEKAVIDFLVKHLSE  
 LLKSRPEDVLTLPYCLLQEVKSDRLTSLSEEQIWQLAVRWLEHNCHYQHLDELLQYIRFGLMDVDTLHT  
 VALSHPLVQASETATALVNEALEYHQSIYAQPVWQTRRTKPRFQSDTYIIGGKKREVCKVKELRYFNPV  
 DQENALIAAIANWSELAPMPVGRSHHCVAVMGDFLFVAGGEVEHASGRTCAVRTACRYDPRSNSWAEIAP  
 MKNCREHFVLAGMDEYLAVVGRNELCQVLPVERYCPKKNKWFVQSFDRSLSCHAGYVADGLLWISGG  
 VTNTAQYQNRMLMVEPNQNKWISRSPLQRRVYHSMMAAVQRKLYVLGGNDLDYNNDRILVRHIDSYNIDT  
 DQWTRCNFNLLTGQNESGVAVHNGRIYLVGGYSIWTNEPLACIQVLDVSRREGKEEVFYGPTLPFASNGIA  
 ACFLPAPYFTCPNLQTLQVPHHRIGTV

**TRTRPLE** - GFP Tag - V

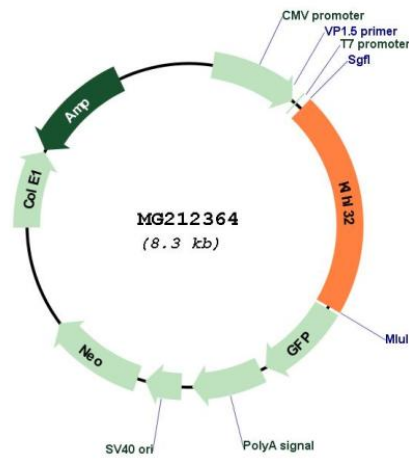
**Restriction Sites:**

SgfI-MluI

Cloning Scheme:



Plasmid Map:



ACCN: NM\_001033531  
 ORF Size: 1761 bp

<b>OTI Disclaimer:</b>	The molecular sequence of this clone aligns with the gene accession number as a point of reference only. However, individual transcript sequences of the same gene can differ through naturally occurring variations (e.g. polymorphisms), each with its own valid existence. This clone is substantially in agreement with the reference, but a complete review of all prevailing variants is recommended prior to use. <a href="#">More info</a>
<b>OTI Annotation:</b>	This clone was engineered to express the complete ORF with an expression tag. Expression varies depending on the nature of the gene.
<b>Components:</b>	The ORF clone is ion-exchange column purified and shipped in a 2D barcoded Matrix tube containing 10ug of transfection-ready, dried plasmid DNA (reconstitute with 100 ul of water).
<b>Reconstitution Method:</b>	<ol style="list-style-type: none"><li>1. Centrifuge at 5,000xg for 5min.</li><li>2. Carefully open the tube and add 100ul of sterile water to dissolve the DNA.</li><li>3. Close the tube and incubate for 10 minutes at room temperature.</li><li>4. Briefly vortex the tube and then do a quick spin (less than 5000xg) to concentrate the liquid at the bottom.</li><li>5. Store the suspended plasmid at -20°C. The DNA is stable for at least one year from date of shipping when stored at -20°C.</li></ol>
<b>RefSeq:</b>	<a href="#">NM_001033531.4</a>
<b>RefSeq Size:</b>	2287 bp
<b>RefSeq ORF:</b>	1764 bp
<b>Locus ID:</b>	212390
<b>Cytogenetics:</b>	4 10.42 cM