

## Product datasheet for **MG212356**

### Krtap4-8 (NM\_001085547) Mouse Tagged ORF Clone

#### Product data:

Product Type:	Expression Plasmids
Product Name:	Krtap4-8 (NM_001085547) Mouse Tagged ORF Clone
Tag:	TurboGFP
Symbol:	Krtap4-8
Synonyms:	OTTMUSG00000002541
Mammalian Cell Selection:	Neomycin
Vector:	pCMV6-AC-GFP (PS100010)
E. coli Selection:	Ampicillin (100 ug/mL)
ORF Nucleotide Sequence:	>MG212356 representing NM_001085547, <b>codon optimized</b> . <b>Due to the complexity of NM_001085547, the ORF clone is codon optimized for mammalian Expression.</b> <b>The nucleotide sequence differs from the reference sequence, yet the amino acid sequence remains identical.</b>

Red=Cloning site Blue=ORF Green=Tags(s)

TTTTGTAATACGACTCACTATAGGGCGGCCGGAATTCGTCGACTGGATCCGGTACCGAGGAGATCTGCC  
GCC**GCGATCGCC**

ATGGTGTCCAGTTGCTGCGGATCCGTGTGTTCCGAGGAGGTTGCGGCCAGGGTTGCTGTCAACCGAGCT  
GCTGTCAGACCACTTGTGTAGAACTACATGCTGCCGCCAGCTGCTGCGTGTGCATCATGCTGCAGACC  
ACAGTGTGTGTCAGTCCGTGTGCTGTCAACCAACTGCTGCCGCCAGCTGCTGTATTTTCATCCTGTTGC  
CGGCCAAGCTGTTGCAGACCCCTCATGTTGCGTTTCTCCTGCTGTAGGCCACAGTGTGCCAGAGTGTCT  
GCTGCCAGCCACCTGCTGCAGGCCTTCTGTTGATTTCTCCTGTTGCCGCCATCCTGTTGCAGGCC  
CTCCTGTTGCGTCTCATCATGCTGCAGACCTAGTTGCTGCATTTCAGCTGCTGTAGGCCCTGTTGCCGA  
CCTTGTGCGGCTCTAGCTCATGCTGCGGCTCATCCTGTTGCCGCCACTTGTGCATCAGTTCTTGCT  
GCCGGCCCTCATGCTGCAGACCTCATGTTGCGTCTCTTCTTGTGTCGCCACAATGTTGCATTTCTAG  
CTGCTGCCGCCGACATGCTGTGACACAACGTGCTGTGACCGCATGCTCAAGTGGCAGCTGCTGT

**ACGCGT**ACGCGGCCGCTCGAG - GFP Tag - GTTTAA



[View online »](#)

**Protein Sequence:** >MG212356 representing NM\_001085547  
 Red=Cloning site Green=Tags(s)

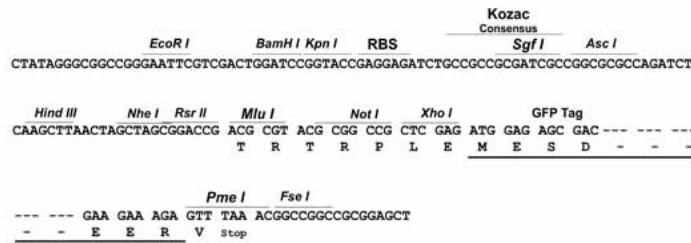
MVSSCCGSVCSEEGCGGCCQPSCCQTTCCRTTCCRPSCCVSSCCRPQCCQSVCCQPTCCRPSCCISCC  
 RPSCCRPSCCVSSCCRPQCCQSVCCQPTCCRPSCCISCCRPSCCRPSCCVSSCCRPSCCISCCRPCCR  
 PCCGSSSSCGSSCCRPCCISSCCRPSCCRPSCCVSSCCRPQCCISSCCRPCCQTTCCRPACSSGSCC

TRTRPLE - GFP Tag - V

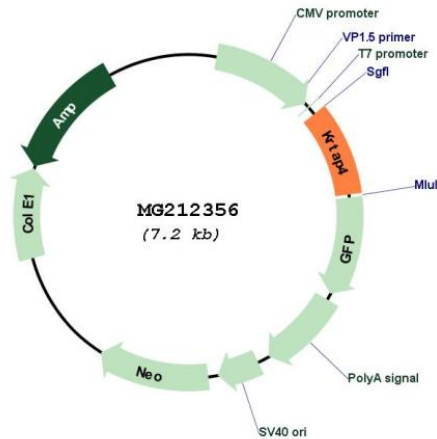
**Restriction Sites:** SgfI-MluI

**Cloning Scheme:**

Cloning sites used for ORF Shuttling:



**Plasmid Map:**



**ACCN:** NM\_001085547

**ORF Size:** 627 bp

<b>OTI Disclaimer:</b>	The molecular sequence of this clone aligns with the gene accession number as a point of reference only. However, individual transcript sequences of the same gene can differ through naturally occurring variations (e.g. polymorphisms), each with its own valid existence. This clone is substantially in agreement with the reference, but a complete review of all prevailing variants is recommended prior to use. <a href="#">More info</a>
<b>OTI Annotation:</b>	This clone was engineered to express the complete ORF with an expression tag. Expression varies depending on the nature of the gene.
<b>Components:</b>	The ORF clone is ion-exchange column purified and shipped in a 2D barcoded Matrix tube containing 10ug of transfection-ready, dried plasmid DNA (reconstitute with 100 ul of water).
<b>Reconstitution Method:</b>	<ol style="list-style-type: none"> <li>1. Centrifuge at 5,000xg for 5min.</li> <li>2. Carefully open the tube and add 100ul of sterile water to dissolve the DNA.</li> <li>3. Close the tube and incubate for 10 minutes at room temperature.</li> <li>4. Briefly vortex the tube and then do a quick spin (less than 5000xg) to concentrate the liquid at the bottom.</li> <li>5. Store the suspended plasmid at -20°C. The DNA is stable for at least one year from date of shipping when stored at -20°C.</li> </ol>
<b>RefSeq:</b>	<a href="#">NM_001085547.2</a> , <a href="#">NP_001079016.1</a>
<b>RefSeq Size:</b>	630 bp
<b>RefSeq ORF:</b>	630 bp
<b>Locus ID:</b>	665992
<b>Cytogenetics:</b>	11