

Product datasheet for **MG212281**

Btbd35f4 (NM_001099643) Mouse Tagged ORF Clone

Product data:

Product Type:	Expression Plasmids
Product Name:	Btbd35f4 (NM_001099643) Mouse Tagged ORF Clone
Tag:	TurboGFP
Symbol:	Btbd35f4
Synonyms:	100042254; Gm3750
Mammalian Cell Selection:	Neomycin
Vector:	pCMV6-AC-GFP (PS100010)
E. coli Selection:	Ampicillin (100 ug/mL)



[View online »](#)

ORF Nucleotide Sequence:

>MG212281 representing NM_001099643
 Red=Cloning site Blue=ORF Green=Tags(s)

TTTTGTAATACGACTCACTATAGGGCGGCCGGAATTCGTCGACTGGATCCGGTACCGAGGAGATCTGCC
 GCC**CGGATCGCC**

ATGGGGCTTTTAGTCAGCAGGGTCTTGAGATGCAGGGATTCCAGTCTGTTAGAGCCACAGCCAGAAGCCA
 TAGCCGGAGCCAGCTACATTCTGGCAGTCGCAAGCGAAAAAGAAACAGTTTGGAGGAGTTGGCAACAAG
 TTCTAATGTTTCATGGACCTCAAAACCAGCGAATGTATCCACATCAAGTTCTCAACTACATCTACTGGAAA
 AGGGTTAAGATCTCATCTAATGATGCTTATCAAAACTATTTTTGGACGGGCATGATAGCGACATTA
 TCCGTGCTCTGGGAAAAACATGGTGTACACAAAGTATTTTTATGTCAGTCAGGCTACTTTGCTAACAT
 TCTCAAAGGTAAGTGGAGAGAATCACACCATGGTGTATAAATCTGATCATTAAAGAAATTTGATACCCGA
 TCTCTGCATTTTGTGTTTGGTGTGTACACGGATCGGATTTGTCAATAACACCTCTGGAAGTCTCTC
 AAGTTTTGGCAGCAGCATGCCTGCTTCGGGTGGATCGAGTAATTCAGCAGTGTGAAGGAATCATGAAAGA
 AACTATCAACAGGAACACTGTGTGCTCCTATTATTTGGCAGCAGAAACCTATAGATTAAGGAGGAGTAAAG
 ACGAGATGCTTTGAATGGCTTCTTTGCAATTTGATGGTACATCCAAGTGTGGCACTTTACAAGGAAGTAG
 ACTTGAAGTTGATGTATCTTCTAGCACTGTCTTCTGACTTACTAGTCATGCAAAAAGGAGATTGATGTATA
 TACCACACTAAAAATATGGATGTTCTTTATCTTAATCCATGCTGGAACGGAACCATGAAACAGCTTTTA
 CAACACGCAAAACAACTGGCTTTCCACCCACATGGCATA GTTGATAACATCAGTTTTCTTGAAAGTGAAG
 AAGGACTAATATTTCAACAGTGTAAAAAGCTGAGATTTGAGCACATCATCTGTGACTTGACTCCAC
 AACTATTTCTGAACAAGATCGACTAATACCTATGGCATGGTTGTCACCCATTTACAACAACAGTGGTTG
 ACTTTGCTGCGAACACAAGAATATGGGGTAATTTGACCACAAGTATCAATGAACAAGAAGTGAAGAAT
 GCACCATGAGGTGTGGTACAATGATCCCCAAGGATGGAAGATATACTTGGAAAGTGGTCAAGTGGAGT
 TGGCTTTCTTTACGTGTGACCTTTACCAGGCAGTGTGTAATTTAAGGCAACGGTGTGAGAGGTGTGAT
 GTTTCTGCTTGCACAACCATATCCGAAATGTCATATTGAGAATAACTTTGGTGTGTTTTGATTCCAACA
 AAAGAGTAACTTTGAGAAAGACAACAGGTTATAAAATCCTCACCTTTGAATATAAGGAGGAGCAAATTTG
 AATGAAATTGGATAGTGTGTTCAACCTTCCCTATGTGTATATTCTGCAATTTCTTTTGTAAACCTA
 GGAAATGCAGAAAAAAG

ACGCGTACGCGGCCGCTCGAG – GFP Tag – GTTTAA

Protein Sequence:

>MG212281 representing NM_001099643
 Red=Cloning site Green=Tags(s)

MGLLVSRVLRCDSSLLPEQPEAIAGASYIPGSRKRKRNLSLEELATSSNVHGPQNQRMPHQVNLNYIYWK
 RVKISSNDAYQNLFLDGHSDIKIRALGKTWCLHKVFLCQSGYFANILKGTWRESHHGVINLI IKNIDTR
 SLHFVFGALYTDADLSITPLEVPQVLAACLRLVDRVIQQCEGIMKETINRNTVCSYYLAAETYRLKAVK
 TRCFEWLLCNLMVHPSVALYKEVDLKLMYLLALSSDLLVMQKEIDVYTTLKIWMFLYLNPCWNGTMKQLL
 QHANNWLSTHMAYVDNISFLESEGLIFQPVFKLRFQHIICDLTSTTILEQDRLIPMAWLSPIYKQWL
 TLLRTQEYGVIGPQVINEQELECTMRCGTMIPKDGRTWKWSVGRLGFPLRVTFTRQCVILRQCQRCD
 GSACHNHIRNVIFRITLVCFDSNKRVTFRKTGYKILTFEYKEEQIVMKLSDVLTFFPMCFNLFVNL
 GNAENK

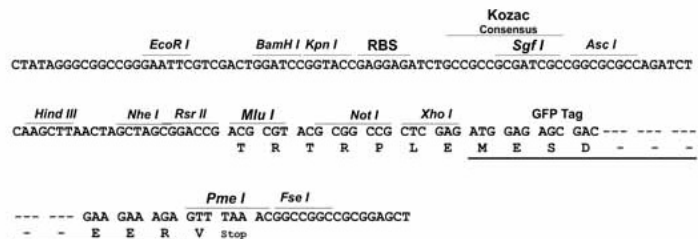
TRTRPLE – GFP Tag – V

Restriction Sites:

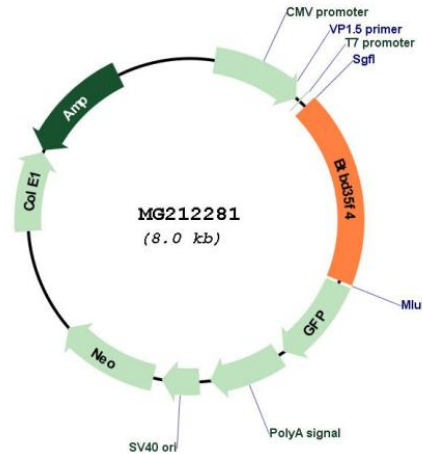
Sgfl-MluI

Cloning Scheme:

Cloning sites used for ORF Shutting:



Plasmid Map:



ACCN: NM_001099643

ORF Size: 1488 bp

OTI Disclaimer: The molecular sequence of this clone aligns with the gene accession number as a point of reference only. However, individual transcript sequences of the same gene can differ through naturally occurring variations (e.g. polymorphisms), each with its own valid existence. This clone is substantially in agreement with the reference, but a complete review of all prevailing variants is recommended prior to use. [More info](#)

OTI Annotation: This clone was engineered to express the complete ORF with an expression tag. Expression varies depending on the nature of the gene.

Components: The ORF clone is ion-exchange column purified and shipped in a 2D barcoded Matrix tube containing 10ug of transfection-ready, dried plasmid DNA (reconstitute with 100 ul of water).

Reconstitution Method:

1. Centrifuge at 5,000xg for 5min.
2. Carefully open the tube and add 100ul of sterile water to dissolve the DNA.
3. Close the tube and incubate for 10 minutes at room temperature.
4. Briefly vortex the tube and then do a quick spin (less than 5000xg) to concentrate the liquid at the bottom.
5. Store the suspended plasmid at -20°C. The DNA is stable for at least one year from date of shipping when stored at -20°C.

RefSeq: [NM_001099643.2](#), [NP_001093113.1](#)

RefSeq Size: 1491 bp

RefSeq ORF: 1491 bp

Locus ID: 100042254

Cytogenetics: X