

Product datasheet for **MG212266**

Tmsb15b2 (NM_001080967) Mouse Tagged ORF Clone

Product data:

Product Type: Expression Plasmids
Product Name: Tmsb15b2 (NM_001080967) Mouse Tagged ORF Clone
Tag: TurboGFP
Symbol: Tmsb15b2
Synonyms: Tb15c
Mammalian Cell Selection: Neomycin
Vector: pCMV6-AC-GFP (PS100010)
E. coli Selection: Ampicillin (100 ug/mL)
ORF Nucleotide Sequence: >MG212266 representing NM_001080967
Red=Cloning site Blue=ORF Green=Tags(s)

TTTTGTAATACGACTCACTATAGGGCGGCCGGAATTCGTCGACTGGATCCGGTACCGAGGAGATCTGCC
GCC**CGATCGCC**

ATGAGCGATAAACAGACTTGTCTCAGAAGTTGAAACATTTGACAAAGCAAAGTTGAAGAAAATACTG
AAGTAAAAATACTCTTCCGTCGAAGGAACTATCCAGCAAGAGAAAGAACACAATGAAAGAACA

ACGCGTACGCGGCCGCTCGAG - GFP Tag - GTTTAA

Protein Sequence: >MG212266 representing NM_001080967
Red=Cloning site Green=Tags(s)
MSDKPDLSEVETFDKAKLKKTNTEVKNTLPSKETIQEKEHNERT

TRTRPLE - GFP Tag - V

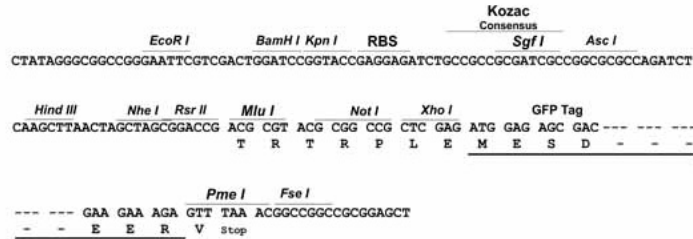
Restriction Sites: SgfI-MluI



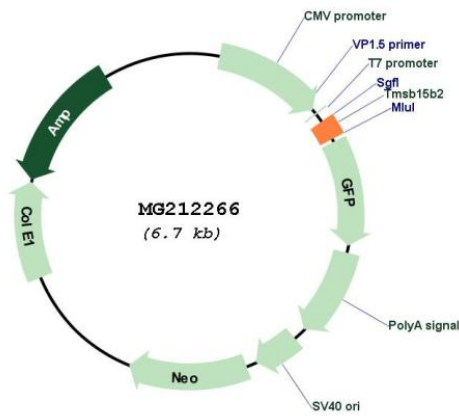
[View online »](#)

Cloning Scheme:

Cloning sites used for ORF Shutting:



Plasmid Map:



ACCN: NM_001080967
 ORF Size: 135 bp

| | |
|-------------------------------|---|
| OTI Disclaimer: | The molecular sequence of this clone aligns with the gene accession number as a point of reference only. However, individual transcript sequences of the same gene can differ through naturally occurring variations (e.g. polymorphisms), each with its own valid existence. This clone is substantially in agreement with the reference, but a complete review of all prevailing variants is recommended prior to use. More info |
| OTI Annotation: | This clone was engineered to express the complete ORF with an expression tag. Expression varies depending on the nature of the gene. |
| Components: | The ORF clone is ion-exchange column purified and shipped in a 2D barcoded Matrix tube containing 10ug of transfection-ready, dried plasmid DNA (reconstitute with 100 ul of water). |
| Reconstitution Method: | <ol style="list-style-type: none">1. Centrifuge at 5,000xg for 5min.2. Carefully open the tube and add 100ul of sterile water to dissolve the DNA.3. Close the tube and incubate for 10 minutes at room temperature.4. Briefly vortex the tube and then do a quick spin (less than 5000xg) to concentrate the liquid at the bottom.5. Store the suspended plasmid at -20°C. The DNA is stable for at least one year from date of shipping when stored at -20°C. |
| RefSeq: | NM_001080967.4 , NP_001074436.1 |
| RefSeq Size: | 403 bp |
| RefSeq ORF: | 138 bp |
| Locus ID: | 100034363 |
| Cytogenetics: | X |
| Gene Summary: | This gene is part of tandem duplication; the other copy of this gene is about 1.5 kb away. Readthrough transcripts that include two exons transcribed from each gene exist. [provided by RefSeq, Jul 2008] |