

## Product datasheet for **MG212111**

### Tro (BC075630) Mouse Tagged ORF Clone

#### Product data:

Product Type:	Expression Plasmids
Product Name:	Tro (BC075630) Mouse Tagged ORF Clone
Tag:	TurboGFP
Symbol:	Tro
Synonyms:	Tnn, magphinin
Mammalian Cell Selection:	Neomycin
Vector:	pCMV6-AC-GFP (PS100010)
E. coli Selection:	Ampicillin (100 ug/mL)
ORF Nucleotide Sequence:	>MG212111 representing BC075630, <b>codon optimized</b> . <b>Due to the complexity of BC075630, the ORF clone is codon optimized for mammalian Expression.</b> <b>The nucleotide sequence differs from the reference sequence, yet the amino acid sequence remains identical.</b>

Red=Cloning site Blue=ORF Green=Tags(s)

TTTTGTAATACGACTCACTATAGGGCGGCCGGAATTCGTCGACTGGATCCGGTACCGAGGATCTGCC  
GCC**CGATCGCC**

ATGGACAGGAGGAACGACCATGGCCACCGAGTGCCAACATTCCAAGGGCCACTGCCCCCTGCAGGAAGCC  
TCGGTCTTCCATTCTCTCCTGACGTGCAGAGCGAAACGACAGAAAAAGATCCCCCAATTGCCTCTAGGTC  
CAAAAAAACAAAAATAAAAAATTCCATCAAACCAATGGATAAGACGACCCCTGCCACCCCCCGTC  
CCCAGCGCAATGACAACGCCTCCAACAACCGAAAGTCACACTGCAGGCTCTGAACTTGCCCATGTTTA  
CGCAGATTTCCAGGCCTCAGCTACTACCGAAGCTCCGAACATTCAGCTTCCGTGACAAGTCAGACCCA  
AAAAGCTAAAACCATGCGCGTGACACCCAAAGTCTCCCTTACCGGCTCTGAGGACGCCACAACGCAACTG  
AAACCGCCATTGCAAGCTTTGAATCTCCAGTAACACCCACTATCCAGACGCCAGTAGCAAATGAGA  
GCGCCAATAGCCTTGCAATCCACTGCTGTCAATAAAAGTAAAAAGGCCCTCCACAGCCAATAACGCTGCCAA  
CAAAACGGTTCTTCCGCGCGGAGATCTCTCGCTTCTGCTGTACCCATACAGTGACCACACAAGGA  
CAGGCTGCTAAGGAGACAGGCAATTCAAACCATCGCCGCGACTGCCGATCCAAGAAAACTCCAAGG  
GCAAACGGACCCCTGCAAAGACAACAAATACAGATAATGAGTACGTGAAAGCTAGTAATGCCATCGAGGC  
CTCCAGCCGACAGATCGGGGCAAGCGGCAGACAGACGGAAGCTAGTAATAGGCAGATCGAGGCAAGCTCC  
CGGCAGACCGAGGCTCTAACAGACAGACTGAGGCTTCTCCCGCAGACTGAGGCTTCTCACGACAGA  
CCGAAACGAGCAACCGCAAATAGGCGCAAGCAATAGGCAGATAATGGCTTCCAATCGCCAGATAGGCGC  
ATCCAATCGCCAGATCGAGGCCAGCAATCGACAAATCGGCAGTAACCGACAGACTGAGGTGTCTAGT  
CGGCAATCGAGGCTAGCAATCGCCAAATAGGAGCAAGTAACCGCAGACGGAGGCCAGCAATCGACAAA



[View online »](#)

TAGGGGCTTCCAACCGCCAGACCGAGGCTCCAACCGGCAGATTGGCGCTTCAAACCGCCAAACCGACGC  
 ATCTAATCGGCAGACCGATGCCAGCAATAGACAGACCGAAGCTAGTAGCCGCCAGACAGAGGCATCTTCT  
 AGGCAGACCGAAGCCAGTTCTCGCCAGACAGAGGCCAGCTCCCGCCAAATGAGGCATCAGCTGCAGCCG  
 TAAGACCCAAAAACCCAGAGGCAAGAAGGGGAATAATAAAGGTTCCAACTCCGCATCCGAGCCAAGCGA  
 AGCTCCACCTGCAATCCAGACTGCTACTAACCATGCTCTCTCCGTGACCGTTAGGATTCCGGCAGGCAGT  
 AGAGCCCGGAAGGCAGCTAACAGAACAGAGCAACAGAATCTCAGGCGCAGATCGCCGAGCAGGGGGCAC  
 AGGCCAGTGAGGCCAGCATTTCCGCGCTGAAACTCAGGTTGCTGCAGCCGTCCAGGCATGGCCGACGA  
 CTATCTCGCTCAGCTGTCTTGAGGCCACTACAAGGACCAGGGGAAAGAGAAAACCGAAAAGCAAGCAC  
 CCAAATGGGGAGGAGAGGACCGGAAATAACTATCGGAGAATTCTTGGGGCGGGCCTTCCACCACCGC  
 GGGATGTCGCCTACTTCAGGAACGGGCTAACAGTTGGTTAAGTACTTGTGTTCAAGGATCAGACCAA  
 AATCCCATCAAACGATCTGATATGCTCAAGGACGTTATACAGGAATATGAAGATTATTTCCAGAGATT  
 ATTGAACGAGCTTCTATGCTCTGGAGAAAATGTTCCGCGTTAACCTCAAGGAAATTGACAAGCAGAATA  
 ATTTGTACATTCTGATCAGCACCAGGAATCTAGCGCGGTATTATGGGCACAACAAAAGATACCCCAA  
 GCTGGGTCTTCTATGGTTATACTGTCACTGATCTTCAATGGTAACAAAGCCAGCGAAGCTGTCATC  
 TGGGAAGTGTGCGCAAACCTGGGACTGCACCCTGGGGTGAACACAGCCTGTTCCGAGAGGTCAAGAAAC  
 TGATTACCGATGAGTTTGTAAACAGAAGTACCTGGAATACAAAAGGGTCCCAAACAGCCGCCCCCCAGA  
 GTATGAGTTTTCTGGGGCTGAGGTTATCACGAAACATCCAAAATGAAGGTGCTCAAGTTCCGCTGC  
 AAGGTGCAAAAAAGGACCCCAAGGACTGGGCTGCGCAATACAGGGAGGCCGTCGAAATGGACATTCAGG  
 CTGCTGCAGTGGCTGTGCGCCGAGGCCAAGGCCAGGGCAGAGGCCCGCGCTCAAATGGGAATCGGCGAAGA  
 GGCCGTGCTGGCCCTTGGAACTGGGATGACATGGATATAAACTGCCTGACCCGGGAGGAGCTGGGAGAC  
 GACGCTCAGGCTTGGTCCCGTTCTCTTCGAGATCGAACCCAGGGCACAGGAAAACCGGGACCCATAAA  
 CCAATGTACTGTTCAATCAGGTTGCCACAACCCGGAACCTCTCTGATGGCGTGGGATTTCTTCCGG  
 CGGTATACCAATCCCTCTGGAGGCTTTGGCGGATTTCTAACCCCTCAGGGGTTTGGCGGCATCTCC  
 AACCTTCTGGTGGCTTCCGGGGCATTTTCAACCCAGTGGCGGGTTTGGCGGGATTTCTAATCCTAGTG  
 GGGGCTTGGTGGCATAAGCAACCCAGCGGGGTTCCGTTGGAATCAGCAATCCAGTGGTGGTTTCGG  
 TGGTATAAGTAACCCATCTGGTGGGTTCCGCGGAATCTCTAACCCATCCGGAGGGTTTGGAGGTATAAGT  
 AACCTTCCAGCGGCTTGGAGGAATTAGTAACCCAGCGGAGGATTCGGTGGGATCTCAAATCCTTCCG  
 GCGGGTTTGGGGTATCTCAACCTTCCGGTGGGTTCCGGGGGATTAGCAACCCCTCCGGAGGCTTTGG  
 GGGCAGGAACCTATCACCTTCGGAAGTGTCCAAACACATCCGTAATTTTTCTCCGCCCATCTATC  
 AGTTTCCGAGACACCCCAACACGTCCACAAGCTTCTCAGGTGGTCTAATTCAGCTTTTCCGGAACCC  
 CGTCAACTAGCGACCGTTTTGTAACTGCCTCAATATCTTTCGGCGGTGCTCCAGCACCAGCACATC  
 CTTTTCCACCGCCTCAATCAGTTTTGGCGGCGCACCAAGCACCAGCACCTCTCTGAGCACCAGCTTATA  
 AGCTTCCGGGGCGCACCAAGTACGTCTACAAGCTTCTCCACGGCTTCAATTTCTTTGGGGGGGCTCCAA  
 GCACAAGCACATCACTGTCTACCGCATCTATCTCATTCCGAGGGGCACCAAGCATCAATTTCTCCAGTGG  
 GGGTTCTTCCGTGAGTTTCCGGCGGTGCTCCAACAACCTCCACTTCTTCCAGCGGGGACCGTGTATCAGC  
 TTCGGCGGTGCCCATGCACTACTGCCAGTATTAGTGGTGGAGCCAGTAGTGGCTTCCGGGAGTACCTTT  
 GCAGTACTAACCCAGGCTTCCAGCGCTCTGAGTACCAATACTTCTTTGGGTCTGCGCCTACCACCTCCAC  
 CGTCTTTTCCAGGGCCGTAAGCACAACAACAGGGTTTGGAGGGACACTTCCACGTCCGTGTGCTTCGGA  
 TCTTCCATATTCAGGCGCTGGCTTCCGTGGCACACTGAGCACCAGATTTCAATTCGGGGGAAGCCCGA  
 GCACAAATACAGGGTTTGGCGGGACCTCTCAACAAGCGTTTCTTCCGGGGCAGTAGTTCTACCTCATC  
 TGATTTCCGGGGCACCCCTCAGCACATCCGTGAGCTTCCGAGGCTTCTTGGCGCCAATGCAGGCTTTGGC  
 GGGACTCTTAACTCTTCCACCTCTTCCGGGGGGCCATATCAACCTCTACTGGTTTCCGGAGCGCTCTGA  
 ACAACAGCGCAACTTTGGGGGTGCCATCTCAACTAGTTTTTCTGGAGTATTGAATTCTAGTGCATCCTT  
 CGGGGGCGCAATTAACACATCTGCCGATTTGGAAGTACTCTCAATTCATCCGCCTATTCCGGAAGCGCA  
 CTCTCTACTAGCGCATCTTCCGGCGGTGTTCTCAACGGATCCGCTGGATTCCGGCGGTGCATTGAACACTA  
 ATGCCACATTCCGGCGGTGCTGTAACGGAAGTGTGGATTCCGGGGGAGCTATGAATACCAACGCGACCTT  
 TGGCGGAGCCCTGAATTCTAACGCGGGTTCCGAGGCGCCATTAGTACCTCCACCAACTTCCGAGGTGCC  
 CTTAATAACTCAGCCGGGTTCCGGGGGGCGATGAACACAAGTGTAGCTTCCGGGGCGCCCTGAATAATA  
 GCGCAGGCTTTGGGGGAGCAATCTCAACTAATGCCACTTTTGGAGGCGCTTTGAATAATAGTCCGGGCTT  
 CGGCGGTGCTATTAGCACAACGCGACCTTCCGAGGCGCTCTTAATAACTCTGCAGGATTCGGAGGAGCT  
 ATCTCCACTTCTGCGAGTTTCCGTGGAACATTGAACAACCTGCTTCTTTGGTGGAGCCATCAACACCT  
 CAGCGAGCTTCCGTGGAGTGTCAATAACTCCGCCGGCTTTGGGGCGCAATTAATCTCAGCTAATTT

CGGCGGTGCTCTCACTAACAGTGTGGCTTTGGCGGTGCCATTTCTACCTCCGCCTCCTTTGGGGGCGCG  
TTGAATAACTCCGCTGGCTTTGGAGGCGCTATCTCAACTAGCGCTAGCTTTGGAGGTGCCCTTAATAATT  
CTGCCGGGTTTCGGCGGTGCTATCTCCACGAATGCAAGCTTCGGAGGCGCAATCAGCAACTCTCCGACTT  
TGGGGGGGCTTCTCAACTTCTGTTGGTTTTGGCGGCACCCTCAACACGACAGATTTGGCTCAACCCAC  
TCTAACTCAATTAGTTTTGGCTCTGCACCAACCACCAGTGTGAGTTTCGGAGGCAGCCACTCCACAACT  
TGTGTTTTGGGGGCGCACCTTCTACGAGTCTCTGCTTTGGCAGCGCATCAAACACAAACTGTGTTTCGG  
CGGGTCTAATTCAACTAACTGCTTCTCCGGAGCAACCTCCGCCAACTTTAATGAGGGGCACTCCATCTCT  
TTCGGGAATGGTCTGTCAACGTCCGCTGGATTTGGGAATGGATTGGGAACATCCGCCGATTTGGATCCT  
CCCTGGGCACTAGTACTGGCTTCGGGGGTCCCTGGGACCTTCGCCAGCTTTAACGGAGGCCTCGGGAC  
AAGCACCGGGTTCGGGGGAGGACTGGGCACATCAACTGACTTCTCCGGAGGCCTGAACCACAACGCTGAT  
TTCAATGGCGGTCTTGCAACAGCGCGGGATTCAACGGAGGGCTGAACACGAACACCGATTTTGGGGCG  
AGCTGGGCACCAGTGTGGATTCGGCGACGGACTCGGATCATCTACATCTTTCGGGGCAGGTCTTGTGAC  
CTCTGATGGCTTTCAGGAAACCTCGGCACAAACACAGGGTTCGGGGGACCCTTGGCACAGGCGCTGGG  
TTTTCCGTGTCCCTGAACAATGGTAATGGCTTCGGTAACGGCCCCAACGCATCATTCAACCGCGGCCTGA  
ATACAATTATTGGCTTTGGGTCTGGCTCAAATACCTCTAACGGCTTCACGGGGGAGCCCAATACAGGATC  
CAGTTTTTCAAATGGCCCTCCAGCATTGTCGGGTTCTCTGGAGGCCCTCAACCGGTGCAGGATTCTGT  
TCTGGCCCCAGCACAGGCGGGTTTGGAGGGGGCCCTTCCACTGGGCCCGGATTTGGAGGCCCTCCACCG  
GACCCGGCTTTGGCGGCCCCAGCACCGGTGGTGGATTCGGGGTCCGAACACTGGGGCGGATTCGGCGG  
CCCCAGCACAGGGGGGGCTTTGGCGGCCATCAACGGAGGGGGATTTGGAGGACCATCTACAGGAGGG  
GGGTTTGGCGGGCCTAGCACAGCCGCTGGCTTCGGCTCCGGTCTTCTACCTCCACAGGATTTGGCGGCG  
GACTGAATACCTCCGCTGGCTTTAGTGGCGGACCCCGAGTACAGGAACGGGCTTCGGAGGCGGAGCCTC  
ATCACACGGGGGTGCGGGTTTCCCTATGGG

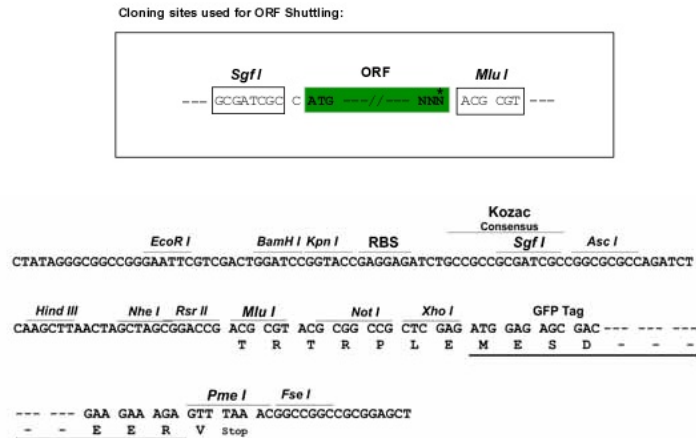
ACGCGTACGCGGCCGCTCGAG - GFP Tag - GTTTAA

**Protein Sequence:** >MG212111 representing BC075630  
 Red=Cloning site Green=Tags(s)

```
MDRRNDHGHRVPTFQGGLPPAGSLGLPFSPDVQSETTEKDPPIASRSKKNKKNKNSIKPMDKTTAPPVV
PSANDNASNPKVTLQALNLPMTQISQASATTEAPNIQASVTSQTQKAKTMRVTPKVSLTGSSEDATTQL
KPPLQALNLPVTTPTIQTIPVANESANSLASTAVNKSKKASTANNAANKTVPSAAEISLASAATHTVTTQG
QAAKETGSIQTI AATARSKKNKSKGRTPAKTTNTDNEYVEASNAIEASSRQIGASGRQTEASNRQIEASS
RQTEASNRQTEASSRQTEASSRQTEASNRQIGASNRQIMASNRQIGASNRQIEASNRQIGASNRQTEVSS
RQIEASNRQIGASNRQTEASNRQIGASNRQTEASNRQIGASNRQTDASNRQTDASNRQTEASSRQTEASS
RQTEASSRQTEASSRQIEASAAAVRPPKPRGKGNKGSNSASEPSEAPPAIQVTNHALSVTVRIRRRGS
RARKAANKNRATESQAQIAEQGAQASEASISALETQVAAAVQALADDYLAQLSLEPTTRTRGKRNRKSKH
PNGEERTGNNYRRIPWGRRLPPPRDVAAILQERANKLVKYLKVDQTKIPIKRSDMLKDVIQEQYEDYFPEI
IERASYALEKMFVRNLKEIDKQNNLYILISTQESSAGIMGTTKDTPKLGLLMVILSVIFMNGNKASEAVI
WEVLRKLGHPGVKHSLEGEVKKLITDEFVKQKYLEYKRVPNRPPPEYEFFWGLRSYHETSKMKVLKFC
KVQKKDPKDWAAQYREAVEMDIQAAAVVAEAKARAEARAQMGI GEEAVAGPWNWDDMDINCLTREELGD
DAQAWSRFSFEIEPRAQENADPTTNVLFNQGATTRNSFSDGAGISFGGITNPSGGFGGINSNSGGFGGSI
NPSGGFGGINSNSGGFGGINSNSGGFGGINSNSGGFGGINSNSGGFGGINSNSGGFGGINSNSGGFGGSI
NPSGGFGGINSNSGGFGGINSNSGGFGGINSNSGGFGGINSNSGGFGGINSNSGGFGGINSNSGGFGGSI
SFGDTPNTSTSFSGGANSSFGTPSTAPFCNTASISFGGAPSTSTSFSTASISFGGAPSTSTSLSTASI
SFGGAPSTSTSFSTASISFGGAPSTSTSLSTASISFGGAPSINSSSGSSVSFSGGAPTTSTSFSGGPCIS
FGGAPCTTASISGGASSFGSTLCSTNPGFSALSTNTSFGSAPTTSTVFSAGVSTTTGFGGTLSTSVCFG
SSPYSGAGFGGTLSTISFGGSPSTNTGFGGTLSTSVSFGASSSTSSDFGGTLSTSVSFGSSGANAGFG
GTLNSSTSFGGAI STSTGFGSALNNSANFGGAI STSFGVLSNSASF GGAI NTSAGFGSTLNSASF GSA
LSTASF GGVLN GSAGFGGALNTNATFGGVLN GSAGFGGAMNTNATFGGALNSNAGFGGAI STSTNF GGA
LNNSAGFGGAMNTSASF GGALNNSAGFGGAI STNATFGGALNNSAGFGGAI STNATFGGALNNSAGFGGA
ISTSASF GGLNNSASF GGAI NTSASF GVLNNSAGFGGAI NTSANFGGAL TNSAGFGGAI STSASF GGA
LNNSAGFGGAI STSASF GGALNNSAGFGGAI STNASFGGAI SNPDFGGAFSTSVFGGTLNTDFGSTH
SNSISFGSAPTTSVSFGGSHSTNL CFGGAPSTSLCFGSASNTNL CFGGSNSTNCFSGATSANFNEGHSIS
FGNGLSTSAGFGNGLGTSAGFGSSLGTSTGFGGSLGPSASFNGGLGTSTGFGGGLGTSTDFSGGLNHNAD
FNGGLGNSAGFNGGLNTNTDFGGELGTSAGFGDGLSSTSFAGLVTSDFAGNLGTNTGFGGTLGTGAG
FSVSLNNGNGFGNGPNASFNRLNTIIGFGSGSNTSNGFTGEPNTGSSFSNGPSSIVGFSGGPSTGAGFC
SGPSTGGFGGGPSTGPGFGGPSTGPGFGGPSTGGGFGGPNTGGGFGGPSTGGGFGGPSTGGGFGGPSTGG
FGGFPSTAAGFGSGLSTSTGFGGGLNTSAGFSGGPPSTGTGFGGGASSHGCGFPYG
```

TRTRPLE - GFP Tag - V

**Restriction Sites:** Sgfl-MluI

**Cloning Scheme:**


**ACCN:** BC075630

**ORF Size:** 6261 bp

**OTI Disclaimer:** The molecular sequence of this clone aligns with the gene accession number as a point of reference only. However, individual transcript sequences of the same gene can differ through naturally occurring variations (e.g. polymorphisms), each with its own valid existence. This clone is substantially in agreement with the reference, but a complete review of all prevailing variants is recommended prior to use. [More info](#)

**OTI Annotation:** This clone was engineered to express the complete ORF with an expression tag. Expression varies depending on the nature of the gene.

**Components:** The ORF clone is ion-exchange column purified and shipped in a 2D barcoded Matrix tube containing 10ug of transfection-ready, dried plasmid DNA (reconstitute with 100 ul of water).

**Reconstitution Method:**

1. Centrifuge at 5,000xg for 5min.
2. Carefully open the tube and add 100ul of sterile water to dissolve the DNA.
3. Close the tube and incubate for 10 minutes at room temperature.
4. Briefly vortex the tube and then do a quick spin (less than 5000xg) to concentrate the liquid at the bottom.
5. Store the suspended plasmid at -20°C. The DNA is stable for at least one year from date of shipping when stored at -20°C.

**RefSeq:** [BC075630](#), [AAH75630](#)

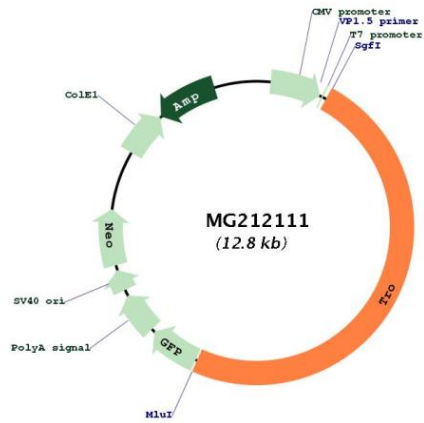
**RefSeq Size:** 6637 bp

**RefSeq ORF:** 6263 bp

**Locus ID:** 56191

**Cytogenetics:** X F3

Product images:



Circular map for MG212111