

## Product datasheet for **MG212086**

### Brca1 (NM\_009764) Mouse Tagged ORF Clone

#### Product data:

Product Type:	Expression Plasmids
Product Name:	Brca1 (NM_009764) Mouse Tagged ORF Clone
Tag:	TurboGFP
Symbol:	Brca1
Mammalian Cell Selection:	Neomycin
Vector:	pCMV6-AC-GFP (PS100010)
E. coli Selection:	Ampicillin (100 ug/mL)
ORF Nucleotide Sequence:	>MG212086 representing NM_009764 Red=Cloning site Blue=ORF Green=Tags(s)

TTTTGTAATACGACTCACTATAGGGCGGCCGGAATTCGTCGACTGGATCCGGTACCGAGGAGATCTGCCGCC**CGATCGCC**

ATGGATTTATCTGCCGTCCAAATTCAGAAGTACAAAATGTCCTTCATGCTATGCAGAAAATCTTAGAGTGTCCGATCTGTTTGAAGTATGATCAAGAACCTGTTCCACAAAGTGTGACCACATATTTTGCAAATTTTGTATGCTGAAACTCTTAACCAGAAGAAAGGGCCTCACAATGTCCTTTGTGAAGAATGAGATAACCAAAAGGAGCTACAGGAAGCACAAGGTTTAGTCAGCTTGTGAAGAGCTGCTGAGAATAATGGCTGCTTTTGTAGCTTGACAGGGAAATGCAGCTTACAAATGGTTTTAGTTTTTCAAAAAGAGAAAATAATTCTGTGAGCCTTTGAATGAGGAGCGTCGATCATCCAGAGCGTGGCTACCGGAACCGTGTGAGAAGCTTCCCCAGGTCGAACCTGGAAATGCCACCTTGAAGGACAGCCTAGGTGTCCAGCTGTCTAACCTTGAATCGTGAGATCAGTGAAGAAAAACAGGCAGACCCAACCTCGAAAGAAATCTGTCTACATTGAACTAGACTCTGATTCTTCTGAAGAGACAGTAACTAAGCCAGGTGATTGCAGTGTGAGAGACCAGGAATTGTTACAGACCGCCCTCAAGAAAGCTGGAGATGAAGGCAAGCTGCACTCTGCAGAAGAGGCTGCTTGTGAGTTTTCTGAGGGCATAAGAAACAATTGAACATCATCAATGCAGTGATGATTTAAACCCTACTGAGAATCATGCAACTGAAAGGCATCCAGAAAAATGTCAGAGTATTTCTATTTCAAATGTGTGTGGAGCCATGTGGCACAGATGCTCATGCCAGCTCATTACAGCCTGAGACCAGCAGTTTATTGCTCATTGAAGACAGAATGAATGCAGAAAAGGCTGAATTCTGTAATAAAGCAAACAGCCTGGCATAAGCAGTGTGAGCCAGCAGAGCAGATGGGCTGCAAGTAAAGGAACATGTAAACGACAGGCAGGTTCCAGCACTGGGGAAAAGGTAGGTCCAAACGCTGACTCCCTTAGTGATAGAGAGAAGTGGACTCACCCGCAAAGTCTGTGCCCTGAGAATTCTGGAGCTACCACCGATGTTCTTGGATAACACTAAATAGCAGCGTTTCAGAAAGTAAATGAGTGGTTTTCCAGAAGTGGTAAATGTTAACTTCTGACAGCGCATCTGCAGGAGGCACGAGTCAAATGCTGAAGCAGCTGTTGTGTGGAAGTTTTCAAACGAAGTGGATGGGGTTTTAGTTCTTCAAGGAAAACAGACTTAGTAACCCCGACCCCATCACTTTAATGTGTAAGTGGAAAGAGACTTCTCCAAACAGTAGAGGATAATATCAGTGATAAAAATTTGGGAAATCCTATCAGAGAAAGGGAAGCCGCCCTCACAAATAAATTAACCGTAAAGAGAAGTACATCCCTTCAACCTGAGGACTTCCATCAAGAAAGCAGATTACAGCAGGTGTTCAAAGGACTCCTGACAACATAAATCAGGAACTGACCTAATGGAGCCAATGA



[View online »](#)

GCAAGCAGTGAGTACTACCAGTAACTGTGTCAGGAGAACAAAATAGCAGGTAGTAATCTCCAGAAAGAGAAA  
 AGCGCTCATCCAAGTGAATCATTGAGAAAGGAACCTGCTTCCACAGCAGGAGCCAAATCTATAAGCAACA  
 GTGTAAGTGATTTGGAGGTAGAATTAACGTCCACAGTTCAAAGCACCTAAGAAAAATAGGCTGAGGAG  
 GAAGTCTTCTATCAGGTGTGCTCTTCCACTTGAACCAATCAGTAGAAATCCAAGCCCACCTACTTGTGCT  
 GAGCTTCAAATCGATAGTTGTGGTAGCAGTGAAGAAACAAAGAAAAACCATTCCAACCAACAGCCAGCCG  
 GGCACCTTAGAGAGCCTCAACTCATCGAAGCACTGAACCTGCAGCGGATGCCAAGAAGAACCAGCCAAA  
 TGAACACATAAGGAAGAGACGTGCCAGCGATGCTTCCAGAAGAGAAAATTAATGAACAAAAGCTGGTTTA  
 TTAAGTCTGTTCAAGTCTAGAAAATCTCAAGGGCCTGCAATCCCAGCCCTCAGAGAACAGGAACAG  
 AGCAACTTGAAACACGCCAAATGTCTGACAGTGCCAAAGAACTCGGGGATCGGGTCTAGGAGGAGACC  
 CAGTGGCAAAACCACTGACCGATCTGAGGAGAGCACCAGCGTATCCTTGGTATCTGACACTGACTACGAC  
 ACTCAGAACAGTGTCTCAGTCTGGACGCTCACACTGTCAGATATGCAAGAACAGGATCCGCTCAGTGTA  
 TGACTCAGTTTGTAGCAAGCGAAAACCCCAAGGAACTCGTCCATGGCTTAACAATGCTGGGAGTGGCAC  
 AGAGGGTCTCAAGCCCCCTTGAGACACGCGCTTAACCTCAGTCAGGAGAAAGTAGAAATGGAAGACAGT  
 GAACTTGATACTCAGTATTTGCAGAATACATTTCAAGTTTCAAAGCGTCAGTCATTTGCTTTATTTTCAA  
 AACCTAGAAGTCCCCAAAAGGACTGTGCTCACTCTGTGCCCTCAAAGGAACTGAGTCCAAGGTGACAGC  
 TAAAGGTAACAAAAAGAACGTACAGGGACAGGAAGAATTTGAAATCAGTCACGTACAAGCAGTTGCGGCC  
 ACAGTGGGCTTACCTGTGCCCTGTCAAGAAGGTAAAGTCTGCTGATACAATGTGTGATAGAGGTTGTA  
 GGCTTTGTCCATCATCTCATTACAGAAGCGGGGAGAATGGACTCAGCGCCACAGGTAATCAGGAATTTT  
 ACAAACCTCACATTTTAAACAATCAGTTTCTCCATCAGGTCACTATAAAAACTGACAATAGGAAACCT  
 CTGACAGAGGGGACGATTTGAGAGACATACATCAACTGAGATGGCGGTGGGAAATGAGAACATTTCTT  
 AGAGTACAGTGCACACAGTTAGCCTGAATAACAGAGGAAATGCTTGTCAAGAAGCCGGCTCGGGCAGTAT  
 TCATGAAGTATGTTCCACTGGTACTCCTTCCCAGGACAACTAGTAGAAACAGAGGGCCTAAGGTGAAC  
 ACTGTGCCCTCCATTAGATAGTATGCAGCCTGGTGTCTGTGCAAAAGTGTCTCTGTAAGTGATAGTATC  
 TTGAAATAAAAAAGCAGGAGGGTGAAGGCTGTCTGTGACAGACTTCTCCATGTCTAATCTCAGACCATCT  
 TGAGCAATCTATGAGTGGTAAGGTTTTTTCAGGTTTGTCTGAGACACCTGATGACCTGCTGGATGATGTT  
 GAAATACAGGGACATACTAGCTTTGGTGAAGGTGACATAATGGAGAGATCTGCTGTCTTTAACGGAAGCA  
 TCCTGAGAAGGGAGTCCAGTAGGAGCCCTAGTCTGTAACCCATGCATCGAAGTCTCAGAGTCTCCACAG  
 AGCGTCTAGGAAATAGAATCGTCAGAAGAGAGCGACTCCACTGAGGATGAAGATCTTCCCTGCTTCCAA  
 CACTTACTGAGCAGAATAAGCAACACACCTGAGCTTACCAGATGCAGCAGTGTGTGACACAGCGTATGC  
 CAGAGAAAGCGGAGGGGACCCAAGCACCATGGAAGGGTAGCAGCAGTACTGCAATAATGAGGTGATCAT  
 GATAGAGGCATCTCAGGAGCATCAGTTTGTGAGGATCCAAGATGCTCTGGCAGCATGTTCTCTTACAG  
 CACAGTGTGCCAAGGGTCAACTGCAAATGCAAACCTCCAGGATTCCAATTTTATTCACCTTCCAAAC  
 AGAGGAGTCAACAGTGTGGGAATGAGGAAGCTTTCCTAAGTGACAAGGAATTGATTTAGATAACAGGGA  
 AATGGCAACTTGCTAGAAAGAGGATAATGACCAAGAAGAGGATAGTATAATCCCAGATTCAGAGGCATCC  
 GGATACGAGAGTGAACAAACCTTTCTGAAGACTGCTCGCAGAGTGATATTTAACCACTCAGCAGCGGG  
 CGACCATGAAGTATAACCTGATAAAGCTGCAGCAGGAAATGGCTCACCTGGAAGCTGTGCTGGAGCAGCG  
 TGGGAACCAGCCTTCTGGCCACTCCCCTTCCCTCCTAGCGGACCCTTGTGCCCTGGAAGACCTGCCAGAT  
 CTGGAACCAACATGTCAGGAGCAGCAATTTAACTTCAAAGAACATTAATGAGAATCCTGTAAGCCAAA  
 ATTTGAAGAGCGCTTGTGATGACAAATTTCAACTACAACATCTGGAGGGTCCCACCAGTGGAGATGACGA  
 GTCAGGGATGGGAAGGCCTTCCCCTTTAAATCTCCGTTGCGAGGCAAGTGGGGCTCTGCACATGGCTGC  
 TTAGGCATCTTCAAAGAGAACTCCCCTCTCAGGAGGAGCTCCTCCAGCCTGCTGGATCAGAGGCGT  
 CATCTGAGCCACACAATCAACAGGGCAGTCTTGCCTGCCAAGGCGAGAGCTAGAAGGAACCCCATACCT  
 GGGATCTGGAATCAGCCTTTTCTCTAGTAGAGACCCCGAATCTGAGTCCCCTAAAGAGCCAGCCACATT  
 GGCACCACACCAGCTTCAACCTCTGCACTGAAAAATACCCCAAGGTCAAGTTGCTTTCCGGAGTGCAGCTG  
 CTGCTGGTGTGATAAAGCAGTGGTAGGAATTGTGAGCAAGATAAAGCCGGAATTGACATCTTCAAGA  
 AAGAGCGGATAGAGACATATCCATGGTGGTGTGAGGCTTGACCCCAAAGAAGTAATGACCGTGCAAAA  
 TTTGCTGAAAAATACCGCCTCACTTAACTGACGCAATTAAGTGGAGACTACACATGTAATTAATAAAA  
 CAGATGCGGAGTTTGTGTGTGAGCGGACACTGAAATATTTTCTGGGCATTGCAGGAGGAAAGTGGATAGT  
 TAGCTATTCATGGGTGGTCCGGTCTATCCAAGAAAGAAGACTTCTGAATGTGCATGAATTTGAAGTCAAA  
 GGAGATGTTGTGACTGGAAGAAATCACCAAGGTCCAAGGCGATCCAGAGAATCCCGGGAAAAAGCTTTCA  
 AGGGCCTACAGGTCTATTGTTGTGAGCCCTTACCAACATGCCAAAGATGAGCTGGAGAGGATGCTGCA  
 GCTGTGTGGGCTTCCGTGGTGAAGGAGCTTCCATCGCTACCCATGACACAGGTGCTCATCTAGTTGTG

ATCGTGCAGCCAAGCGCCTGGACAGAAGACAGCAACTGCCAGATATTGGCAGCTGTGCAAGGCACGTC  
 TTGTGATGTGGGACTGGGTGTTGGACAGTCTATCCAGCTACCGGTGTCGGGATCTGGATGCCTACCTGGT  
 ACAGAATACCTGTGACAGTAGTGAGCCACAAGACTCCAATGAT

ACGCGTACGCGGGCCGCTCGAG - GFP Tag - GTTTAA

**Protein Sequence:**

>MG212086 representing NM\_009764  
 Red=Cloning site Green=Tags(s)

MDLSAVQIQEVQNVLHAMQKILECPICLLELIKEPVSTKCDHIFCKFCMLKLLNQKKGPSQCPLCKNEITK  
 RSLQGSTRFSQLAEELLRIMAAFELDTGMQLTNGFVSFKKRNNSCERLNEEASIIQSVGYRNRVRLPQV  
 EPGNATLKDSLGVQLSNLGIIVRSVKKNRQTQPRKKSIVYIELSDSSEETVTKPGDCSVRDQELLQTAPQE  
 AGDEGLHSAEEAAEFSEGIRNIEHHQCSDDLNPTENHATERHPEKCSISISNVCEPCGTDAAHSSL  
 QPETSSLLLIEDRMNAEKAFCNKSKQPGIAVSQQSRWAASKGTCNDRQVPSTGEKVGPNADSLSDREKW  
 THPQSLCPENSGATTDVPWITLNSSVQKVNEWF SRTGEMLTSDSASARRHESNAEAAVVLEVSNEVDGGF  
 SSSRKTDLVTPDPHHTLMCKSGRDFSKPVEDNISDKIFGKSYQRKGRPHLNHVTEIIGTFITPQITQE  
 QPFTNKLKRKRSTSLQPEDFIKKAADSAGVQRTPDNINQGTDLMEPNEQAVSTTSNCQENKIAGSNLQKEK  
 SAHPTESLRKEPASTAGAKSISNSVSDLEVELNVHSSKAPKKNRLRRKSSIRCALPLEPISRNPSPPTCA  
 ELQIDSCGSSEETKKNHSNQQPAGHLREPQLIEDTEPAADAKKNEPNEHIRKRRASDAFPEEKLMNKAGL  
 LTSCSSPRKSQGPVNPSPQRTGTEQLETRQMSDSAKELGDRVLGGEPGKTTDRSEESTSVLSVSDTDYD  
 TQNSVSVLDAHTVRYARTGSAQCMTQFVAENPKELVHGSNNAGSGTEGLKPLRHALNLSQEKVEMEDS  
 ELDTQYLQNTFQVSKRQSFALFSKPRSPQKCAHSVPSKELSPKVTAKGKQKERQQEFEISHVQAVAA  
 TVGLPVPCEGKLAADTMCDRGCRCLPSSHYSRGENGLSATGKSGISQNSHFQKQSVSPIRSSIKTDRKRP  
 LTEGRFERHTSSTEMAVGNENILQSTVHTVSLNRRGNACQEAAGSGSIEHCSTGDSFPGQLGRNRGPKVN  
 TVPPLDSMQPGVCQQSVPVSDKYLEIKKQEGEAVCADFSPCLFSDHLEQSMGKVFQVCSETPDDLDDV  
 EIQGHSTFGEEDIMERSAVFNGLRRESRSPSPVTHASKSQSLHRASRKLESSEESDSTEDDLPCFQ  
 HLLSRISNTPELTRCSSAVTQRMPEKAEGTQAPWKGSSSDCNNEVIMIEASQEHQFSEDPRCSGSMFSSQ  
 HSAAQGSTANANSQDSNFIPPSKQRSHQCGNEEAFLSKELISDNEEMATCLEEDNDQEEDSIIPDSEAS  
 GYESETNLSEDCSQSDILTTQQRATMKYNLIKLLQEMAHLEAVLEQRGNQPSGHSPSLLADPCALEDLPD  
 LEPNMSGAAILTSKNINENPVSNLKSACDDKFLQHLLEGPTSGDDESGMGRPSPFKSLAGSRGSAHGC  
 SRHLQKRNSPSQEELLQPAGSEASSEPHNSTGQSCLPRRELEGTPLYLGSGLSFLSSRDPESESPKEPAHI  
 GTTPASTSALKIPQGQVAFRSAAAAGADKAVVGI VSKIKPELTSSEERADRDISMVVSGLTPKEVMTVQK  
 FAEKYRLTLDAITEETHVVIKTDAEFVCERTLKYFLGIAGGKWI VSYSWVRSIQERRLLNVHEFEVK  
 GDVVTGRNHQGPRRSRESREKLFKGLQVYCCPEFTNMPKDELERMLQLCGASVVKELPSLTHDTGAHLVV  
 IVQPSAWTEDSNCPDIGQLCKARLVMWDWVLDLSLSSYRCRDLDAYLVQNI TCDSEPPQDSND

TRTRPLE - GFP Tag - V

**Chromatograms:**

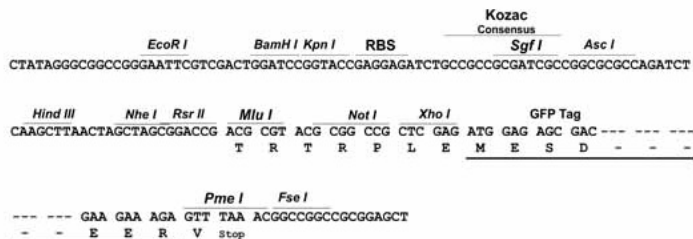
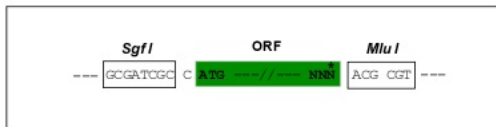
[https://cdn.origene.com/chromatograms/ja2741\\_d06.zip](https://cdn.origene.com/chromatograms/ja2741_d06.zip)

**Restriction Sites:**

SgfI-MluI

**Cloning Scheme:**

Cloning sites used for ORF Shutting:


**ACCN:** NM\_009764

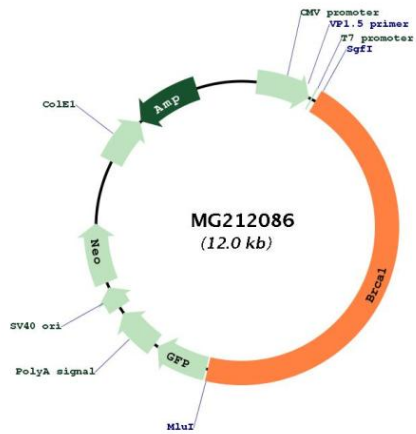
**ORF Size:** 5436 bp

**OTI Disclaimer:** Due to the inherent nature of this plasmid, standard methods to replicate additional amounts of DNA in *E. coli* are highly likely to result in mutations and/or rearrangements. Therefore, OriGene does not guarantee the capability to replicate this plasmid DNA. Additional amounts of DNA can be purchased from OriGene with batch-specific, full-sequence verification at a reduced cost. Please contact our customer care team at [custsupport@origene.com](mailto:custsupport@origene.com) or by calling 301.340.3188 option 3 for pricing and delivery.

The molecular sequence of this clone aligns with the gene accession number as a point of reference only. However, individual transcript sequences of the same gene can differ through naturally occurring variations (e.g. polymorphisms), each with its own valid existence. This clone is substantially in agreement with the reference, but a complete review of all prevailing variants is recommended prior to use. [More info](#)

<b>OTI Annotation:</b>	This clone was engineered to express the complete ORF with an expression tag. Expression varies depending on the nature of the gene.
<b>Components:</b>	The ORF clone is ion-exchange column purified and shipped in a 2D barcoded Matrix tube containing 10ug of transfection-ready, dried plasmid DNA (reconstitute with 100 ul of water).
<b>Reconstitution Method:</b>	<ol style="list-style-type: none"><li>1. Centrifuge at 5,000xg for 5min.</li><li>2. Carefully open the tube and add 100ul of sterile water to dissolve the DNA.</li><li>3. Close the tube and incubate for 10 minutes at room temperature.</li><li>4. Briefly vortex the tube and then do a quick spin (less than 5000xg) to concentrate the liquid at the bottom.</li><li>5. Store the suspended plasmid at -20°C. The DNA is stable for at least one year from date of shipping when stored at -20°C.</li></ol>
<b>RefSeq:</b>	<a href="#">NM_009764.3</a> , <a href="#">NP_033894.3</a>
<b>RefSeq Size:</b>	6648 bp
<b>RefSeq ORF:</b>	5439 bp
<b>Locus ID:</b>	12189
<b>UniProt ID:</b>	<a href="#">P48754</a>
<b>Cytogenetics:</b>	11 D
<b>Gene Summary:</b>	<p>E3 ubiquitin-protein ligase that specifically mediates the formation of 'Lys-6'-linked polyubiquitin chains and plays a central role in DNA repair by facilitating cellular responses to DNA damage. It is unclear whether it also mediates the formation of other types of polyubiquitin chains. The E3 ubiquitin-protein ligase activity is required for its tumor suppressor function. The BRCA1-BARD1 heterodimer coordinates a diverse range of cellular pathways such as DNA damage repair, ubiquitination and transcriptional regulation to maintain genomic stability. Regulates centrosomal microtubule nucleation. Required for normal cell cycle progression from G2 to mitosis. Required for appropriate cell cycle arrests after ionizing irradiation in both the S-phase and the G2 phase of the cell cycle. Involved in transcriptional regulation of P21 in response to DNA damage. Required for FANCD2 targeting to sites of DNA damage. May function as a transcriptional regulator. Contributes to homologous recombination repair (HRR) via its direct interaction with PALB2, fine-tunes recombinational repair partly through its modulatory role in the PALB2-dependent loading of BRCA2-RAD51 repair machinery at DNA breaks. Component of the BRCA1-RBBP8 complex which regulates CHEK1 activation and controls cell cycle G2/M checkpoints on DNA damage via BRCA1-mediated ubiquitination of RBBP8. Acts as a transcriptional activator (By similarity). Inhibits lipid synthesis by binding to inactive phosphorylated ACACA and preventing its dephosphorylation.[UniProtKB/Swiss-Prot Function]</p>

Product images:



Circular map for MG212086