

Product datasheet for **MG212083**

Zfp646 (BC068300) Mouse Tagged ORF Clone

Product data:

Product Type:	Expression Plasmids
Product Name:	Zfp646 (BC068300) Mouse Tagged ORF Clone
Tag:	TurboGFP
Symbol:	Zfp646
Synonyms:	6820429M01
Mammalian Cell Selection:	Neomycin
Vector:	pCMV6-AC-GFP (PS100010)
E. coli Selection:	Ampicillin (100 ug/mL)
ORF Nucleotide Sequence:	>MG212083 representing BC068300 Red=Cloning site Blue=ORF Green=Tags(s)

TTTTGTAATACGACTCACTATAGGGCGGCCGGAATTCGTCGACTGGATCCGGTACCGAGGAGATCTGCC
GCC**CGATCGCC**

ATGGAGGACATGCCCTCTCATTAGTTGCTCTGACTGTCAGCGCCACTTTCCTAACCTCCCAGAACTGG
CACGGCATCGAGAACTGCGCCATTCATCTGCTAAGCAGGACGGGGAGGAAGCCGATGGCATCCCTCACCC
CTATGGCAGTCACCCGGAGAAGTTGGCCAACCATCAGAGGAACCATGAGACTCTTTTTTCCCTGTACC
ACCTGTGGCAAGGATTTTCTAATCGCTTGGCCCTCCAGAGCCATATGAGGACTCATGCTCCTGAGAGCC
ACCGAAGGCACGGCCTCCACATGCCATGGAACCGCTCCACACCTTGGGAGTGAGACCATGGCTACTGA
CTCCTGGGGTCTGAGGCTTGGATCTGGGAAGGCTGGGAAAATCAGACGAAGTTGGTACGAGAGACACAT
GACTGGGAATCTGGAGCTGACCCAGGGCAGCGTCAGGGACGTGGGAAGATCCACCTACCAACAAAGAGC
AAGGCTTAGAAATGCAGCCAGATTCTAAAGGAGGTACGGCGGACTGGGTGCCCGCGTCAGTTCCGAAGG
AGCATCACCACTCCCCACTCCAGCGAGCAACCTTCTTAGCAATTTGGAACAGTATTTGGCTGAATCAGTA
GTGAATTCACAGAGGCCAGGAGCCACTGAGCCTCTTCTACTGAGGGGGAGCGAAAGTACAGGTGCA
GTGAGTGCGGGAAGACCTATAAGCATGCCGGGAGCCTACCAACCACCGCCAGAGTCACACTCTGGGCAT
CTACCCTTGTTCCATCTGTTTCAAGGAGTTCTCTAACCTCATGGCCCTGAAGAACCACTCGAGACTCCAT
GCCAGTATCGGCCTTACCCTGCTCCTCACTGCCCCGTGCTTTTCGGCTCCCCAGGGATCTGCTGGAAC
ATCAGCAGTCCCATGAGGGCTAAAGCAGGAACAACCATGGGAAGACAAAGAGATGCCTACCACAAATGG
ACACGCAGATGAGAGGAGTTGGGGTCTGATATCTAAAACAGGGATGTTGAATGGTTCTGGGGAGCTCAGC
TCTTCTGGACAGCTAGAAGATGGCGGCTCAGAGGAATATCGACCTTTCTGTTGTGGAGACTGTGGCCGTA
CCTACCGTCATGCAGGTAGTCTCATCAACCATCGAAAAAGCCACCAACAGGTATCTACCCCTGTTCCAT
TTGTTCCAAGCAGCTATTCAATGCAGTCTGCTGAAAAACCATATTCGTGCTCATCATAGACCCCGCAA
GGAGCTGGGAAGGTGGTCAGTCATCAGTGTCTCAACTGCTCTTACGTACGCCGAGAATACTCCAAAAG
TGGACGAGGTCCCCTGCCAGCCTGGACCATCGTCCCTATAAGTGAATGAGTGTGGTTCGGCTTACCG
CCACAGAGGGAGCCTGGTGAACCACCGCCACAGCCACCGGACAGGAGAGTACCAGTGTTCACCTTTGCTCT



[View online »](#)

CGAAAATACCCCAACCTTATGGCTCTGCGCAACCATGTGCGGGTACATTGCAAGGCTACACGCCGAAGTA
 CAGATCCAGGGACTGAAGGTTACCCAGCCCTGTCAAGAAAGAACAACATGATCCAGTGGGAATGGAAGC
 AGCATTCCACGGAGATGAGGAACATGCATGCAAACGTGAAGAAGAGGCCACCAAGTAAACCCCTCAATGGCA
 GATAGGACAGTGCCACAGGTGTGTAGCATTGTGGAATGTTGTTGAAGATCTCAAAAGTCTCGAACATC
 ATAGCGTGACCCACAGGAAGGAGAAAAAGCAGGACAGACAGCACGGTGTACCAACTAGAACATTTGC
 TTGCCAAGACTGTGGCAAGAGCTATCGCCACTCAGGCAGCCTTATTAACCATAGGCAGACCCATCAGACA
 GGAGACTTCAGTTGTGGGCCTGTGCCAAGCATTCCATACCATTGGCTGCGATGAAAAGCCATTTACGGC
 GTCACAGTCGGCAGTGGAACAGAAAGCGGCAGAAAGCAAGATAGTGGTACAGGGGAAGTAGCCACGCTCCC
 ACCTGGGGGGCCTGGACCCTGAAGCTGAAAAACGACGAGGACCCAGATTCTTCCCAAGATCCTTTGGGA
 GAAAGTCTTGTGAAACTGAAGACAACCTGAAAAGGGATGGGGACTGTTTGCAGGCTGGATCTAGAGGCA
 ACGAATGTGTGCTTAAAAGGGAGGAAGCCTGTTTTCTGGGTGATAAAGAGGGCACTGAGGAAGGACTAGA
 AGAGAGAGAGGCCTGTTTCTTGACGACCTAGGCACCCAGGTGATGAGTGAATGAAACTGGCTTCTGT
 GGTGGCCTCCCTGGGATGGACAGTGACCGAAGAGGGGCATCTGCCACTCTGACTCCTCCTCCACCCTG
 CTGACGCTGACACTGTCTGGAAGGCCGAGCCACTCACACCTGTTCTGACTGTGGAGATTCTTTCTCCA
 TGCTGCTGGCCTGTTGAGCCATAGTCTGCCACCCTCCAGGCATCTATCAATGCTCTCTGTGCCAAAG
 GAATTTGATTCTCTGCCTGCCCTTCAAGTCACTTCCAGACCCATCGGCCAGGAGAGGTAGCCTCAGCAC
 AGCCCTTCTCTGCTGCCTGTGCGGTATGATCTTCTGGGAGGACTGGCTACAGGCGTCATCTGCGCCA
 GGCTCATGGAGCTTCTGCCATGACTGAGGGCTCAGAAGAAGAGGAGGAAGGCACAGCAGAAAACAGCCTCT
 ACCCATAGTCTCCCCTGCAACTCTCAGAAGCAGAGCTGCTGAATCAACTGCAGCGTGAGGTGGAAGCTC
 TAGATGGAGCAGGTTATGGTCATATTTGTGGTTGCTGTGGTCAGACCTATGATGACTGGGGAGCCTGGA
 GCGTCACCACCAAAGTCAAAGTTCTAGCAATAGGACAGAGAATGTTCTAGCCATTTGGAAGGAGCAGGT
 GATGCAACAGAAAATGGTTGCAGATCATGGCTTTGAGGGCAGGTGACCTCCGTCCTCAGAAGAAGTGGGG
 ACATAAAGTCTGAAGAGGGAGTAGTGGCACAGTTGCAGACAGCCTTTGCATGACGGCTGGTGAAGCTT
 TCTGGAGTCCCACCCTCGCCTTTCCAATGTAACCAAGTGTGGCAAGACCTATCGCCACGGAGGCAGCTTG
 GTAACCACCGAAAGATCCACCAGACAGGTGATTTTCATCTGTCTGTTCCCGCTGCTACCCCAATC
 TGGCTGCCTACCGAATCATCTGCGGAATCACCCCTCGCTGCAAAGGCTCAGAGCCCCAAATGGGGCCCAT
 CTCAGAAGCAGGAGGCTGCAGTGAGCCCCAGAATGCAGCAGAGGCAGGGCAGGAGCAGGCTGTCATAGGG
 CAACTCCAGGAAGAGCTTAAAGTGGAGCCCTTGGAGGAGCTGGCAGGTGTCAAAGAAGAAGTGTGGGAGG
 GGACCGCTGTAAGGAAGAGGAGCTGGAGCAGGAGTTGGAGACAGGCTGTGACTGAGGTCACCTCGGA
 GCGGCCCTTATGCTGTGAAGTGTGTGGCCGACCTACAAGCATGCTGGCAGCCTTATCAATCACCGGCAG
 AGCCACCAGACTGGCCACTTTGGCTGCCAGGCCTGCTCCAAGGGTTTCTCAAACCTCATGCTACTCAAGA
 ACCACCGCGCATCCATGCAGACCCTCGACAGTCCGCTGCAGTGAGTGTGGGAAAGCCTTTCGCTGCG
 AAAGCAGCTGGCCAACCACAGCGAGTCCATGCTGAGCGACGCAGGAGTAGGGGCACCCAGAAAAGTACT
 CGTGAGGACCGGCCTTTCAGATGTGGGCAGTGTGGCCGGACTTACCGCCATGCTGGCAGTCTCATGAACC
 ACCAGTGAACCCCTGAGGCCAGCCGTTACAGCTGCCCTTCTGTTTTAAGACCTATTCCAACCGCACAGC
 CCTGAAAGACCATCAGAGGGTACATTCTGATAGTCAACAGCGGCAGCAGTCAAGTGTCCCAGAGGGCA
 GCAGCTGTACGTTGTACCTATGTGGCTGTGGCTTTTCTGGCCAGGGATCTCTAGAGCAGCATCTACAGG
 AGCATGAGGACACCAAAGTACTAGAGGTAGCCAGTGGCCAGGGAGGCCAATGCTACAGAAGGCAGTGAGGA
 GAACCTTGATGACTGGGACTGGAGGGCAGGTGAGTGGTACTGAGGTACTGCAGGTGGAACATGAAACC
 AAGAGGCCTGGGGACACAGTCAAGTCCAGTAGCCAGCGTGTTCAGGAGGCACAGAATCCACACAGC
 AGGTGGGGAAAGTAGATGGGAGTCAAGGAGACAGAGGACAAATGAACCACAATGGTGCCTGGGTTCTTCA
 GGATCAGTTAACCAAGCCAGAAGGCAAGTTGGAAGACTGTCTCCAGGAATCCTTGTACCTCTCTGAG
 AGCCAGTCCAATGGTCTACTCTAAGATACAGGGATAGTTGGAAGGTGCTGACAGCGGCTCTCAACTCC
 AACCAAGGCCACTGCTGCAGCCAGTGTGGCAAGGCCTACTGCCAACCTGATGGCCTCTTGAACCCAG
 CATTAAATGGGAAAGACTGTCACATTTGTCTGCTGTTTCCAAAGAGTTCTTGAATCCTGTGACCACTGAG
 ATCCACAACCACACTACTGCCAGCGCTTGTCTGTAGTAATTGTAGCAAAGTGTGTGAGTCCCACAGTG
 AACTGGCCACACATGAAGACTCATGCTGTTGAGCACAGTCAAGTGTGAGTGTGAGTGGAGAAGCCAG
 AGGTCCACAGGCTGGGATGGCAGAGGTGGTCTCCTGTTCCAGGAAAGCTCAGGAGGCCCATCAGAA
 CTTCTGGAGACCCAGAGGAGAATGGGGTGCCAGCTAACGGAGGACAAGGAATACATTTCCAGCAGCTG
 AAGACAAGGAGCGTCCCTTTGCTGTGCTCAGTGTGGCGTTCATACCGCATGCCGGTAGCCTGTGAA
 CCACCAGAAGGCCACACCATTGGACTCTACCCCTGTTCCCTGTGTCCCAAACCTTCTGCCTAACCTGCTG
 TCTCTAAGAACCACAGTCGGACCCACACGGACCCCAAGCGCTACAGTGAACATCTGTGGCAAGGCTT

TCAGAACCCTGCCCCGGCTTCAGGGCCATGGACGGGTCCATGCACCCAGGAGGGACCATTACCTGTTCTCATTGTCCTCGCCGCTTCGCCACCGAATCAGCTTTCTGCGACACCAGCAGCAGCACCAGGAAGAGTGGCCAGTGTGAGCTCAGGAGCCTCAGTGGCACCAGCAGCAAGCAGAGAGGATTCTCTACAGCCTCGCTTCGAACCCCTCACCCAGTGGCCTGCAGACCTCAGTCTCTCCCTC

ACGCGTACGCGGCCGCTCGAG - GFP Tag - GTTTAA

Protein Sequence:

>MG212083 representing BC068300
 Red=Cloning site Green=Tags(s)

MEDMPLSFSCSDCQRHFPNLPALARHREL RHSSAKQDGEEADGIPHPYGSHPENLANHQNHETLFFPCTTCGKDFSNRLALQSHMRTHAPESHRRHGPPHMETAPHLGSETMATDSWGQRLGSGEGWENQTKLVRETHDWESGADPRAASGTWEDPPTKQRQGLEMQPDSKGGTADWVPAVSSEGASPLPTPASNLLSNLEQYLAESV VNFTEAQEPTPLPTEGERKYRCECGKTYKHAGSLTNHRQSHTLGIYPCSIKFKEFSNLMALKNHSRLHAQYRPHYCHPCPRAFRLPRDLLEHQQSHEGLKQEQPWEDKEMPTTNGHADERSWGQLSKTGMLNGSGELS SSGQLEDGGSEERYPFCCGDCGRTYRHAGSLINHRKSHQTGIYPCSIKSKQLFNAAALKNHIRAHHRPRQGAGEGGQSSVSSTAL TSAENTPKVDEVPTASLDHRPYKCNCEGRAYRHRGSLVNHRHSHRTGEYQCSLCP RKYPNLMALRNHVHVHCKATRRSDPGTEGSPVYKKEQHDPVGMEEAFHGDEEHACKREEEATSNPSMADRTPVQVCSICGMLFEDLKSLEHHSVTHREGEKSRTDSTVSPTRTFACQDCGKSYRHSGLINHRQTHQT GDFSCGACAKHFHTMAAMKSHLRRHSRQWNRQRKQDSGTGEVATLPPGGAWTLKLENDPSSQDPLG ESPCETEDNLERDGLQAGSRGNECVLKREEACFLGDKEGTEEGLEEREACFLDDLGTGDECNETGFC GGLPGMDSRKRKGIHSDSSHPADADTVWKAATHTCSDCGDSF SHAAGLLSHRSCHPPGIYQCSLCPK EFDLSPALRSHFQTHRPGEVASAPFLCCLCGMIFPGRGTGYRRHLRQAHGASAMTEGSEEEEEETAS THSPPLQLSEAELLNQLQREVEALDGAGYGHICGCCGQTYDDLGSLEHHSQSSSNRTENVPVSHLEGAG DATEMVADHGFEGT VTSVSEEGDIKSEEGVGGTVADSLCMQAGESFLESHPRPFQCNQCGKTYRHGGSL VNHRKIHQTGDFICPVCSRCPYNLAAYRNHLRNHPRCKGSEPQMGPISEAGGCSEPNAAEAGQEQA VIGQLQEELKVEPLEELAGVKEEVWEGTAVKEELEELELETGCQTEVTSERPFSCVCGRTYKHAGSLINHRQ SHQTGHFGCQACSKGFSNLMALKNHRRIHADPRQFRCECGKAFRLRKQLANHQRVHAERRRSRGTQKLT REDRPFRCGQCGRTYRHAGSLMNHQCNPEASRYSCPFCFKTYSNRTALKDHQRVHSDSQRRQSGCPQRA AAVRCTLGCGFSGQGSLEQHLQEHEDTKLEVASGQGGQHATEGSEENLDDWGLEGRSDGTEVLQVEHET KRPGGHSQSPSSPACSGGTESTQVQVGVKVDGSDGDRGMNHNHNGAWVLQDQLTKPEGKLEDTVSRNPCHLSE SQSNGPTLRVYRDSWKGADSGSQLQPESHCCSQCGKAYCQPDGLLNPSINGKDCHICLLCSKEFLNPV TTEIHNHTAQRFACSNCSKVCESHSELATHMKTHAVEHSQMSGQMEKTRGPQAGMAEVGPPGPKAQEAPSE LPGAPEENGVPANGGQGIHFPAEDKERPFCCAQCGRSYRHAGSLLNHQKAHTIGLYPCSLCPKLLPNLL SLKNHSRHTHTDPKRYSCNICGKAFRTAARLQGHGRVHAPQEGPFTCSHCPRRFRHRISFLRHQQHQEEW PVSSSGASVAPAASREDSSTASLPNPSQWPADLSLSL

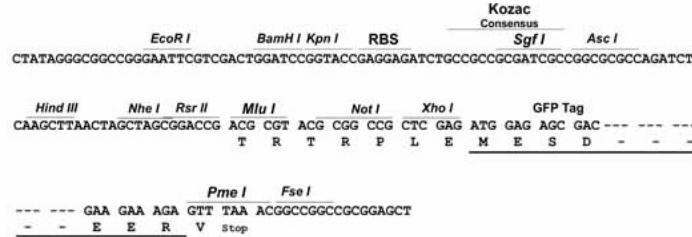
TRTRPLE - GFP Tag - V

Restriction Sites:

Sgfl-MluI

Cloning Scheme:

Cloning sites used for ORF Shutting:



- ACCN:** BC068300
- ORF Size:** 5364 bp
- OTI Disclaimer:** The molecular sequence of this clone aligns with the gene accession number as a point of reference only. However, individual transcript sequences of the same gene can differ through naturally occurring variations (e.g. polymorphisms), each with its own valid existence. This clone is substantially in agreement with the reference, but a complete review of all prevailing variants is recommended prior to use. [More info](#)
- OTI Annotation:** This clone was engineered to express the complete ORF with an expression tag. Expression varies depending on the nature of the gene.
- Components:** The ORF clone is ion-exchange column purified and shipped in a 2D barcoded Matrix tube containing 10ug of transfection-ready, dried plasmid DNA (reconstitute with 100 ul of water).

Reconstitution Method:

1. Centrifuge at 5,000xg for 5min.
2. Carefully open the tube and add 100ul of sterile water to dissolve the DNA.
3. Close the tube and incubate for 10 minutes at room temperature.
4. Briefly vortex the tube and then do a quick spin (less than 5000xg) to concentrate the liquid at the bottom.
5. Store the suspended plasmid at -20°C. The DNA is stable for at least one year from date of shipping when stored at -20°C.

RefSeq: [BC068300.1](#)

RefSeq Size: 5930 bp

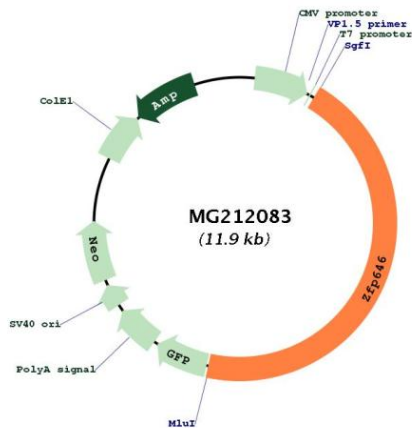
RefSeq ORF: 5366 bp

Locus ID: 233905

Cytogenetics: 7 F3

Gene Summary: May be involved in transcriptional regulation.[UniProtKB/Swiss-Prot Function]

Product images:



Circular map for MG212083