

Product datasheet for **MG212055**

Smarca4 (NM_011417) Mouse Tagged ORF Clone

Product data:

Product Type:	Expression Plasmids
Product Name:	Smarca4 (NM_011417) Mouse Tagged ORF Clone
Tag:	TurboGFP
Symbol:	Smarca4
Synonyms:	b2b508.1Clo; b2b692Clo; Brg1; HP1-BP72; SNF2beta; SW1/SNF
Mammalian Cell Selection:	Neomycin
Vector:	pCMV6-AC-GFP (PS100010)
E. coli Selection:	Ampicillin (100 ug/mL)
ORF Nucleotide Sequence:	>MG212055 representing NM_011417 Red=Cloning site Blue=ORF Green=Tags(s)

TTTTGTAATACGACTCACTATAGGGCGGCCGGAATTCGTCGACTGGATCCGGTACCGAGGAGATCTGCC
GCC**CGATCGCC**

ATGTCTACTCCAGACCCACCTTGGGTGGGACTCCTCGGCCTGGTCTTCCCCAGGCCCTGGTCTTCAC
CTGGTGAATGCTGGGTCTAGCCCTGGCCCTCACCAGGTTCTGCCACAGCATGATGGGGCAAGCCC
AGGACCTCTTCCAGCAGGACATCCCATGCCACCCAGGGGCTGGAGGGTACCCAGGACAACATGCAT
CAGATGCACAAGCCTATGGAGTCCATGCACGAGAAGGGCATGCCTGATGACCCACGATACAACCAGATGA
AAGGGATGGGCATGCGGTGAGGGGCCACACAGGCATGGCACCTCCACCTAGTCCCATGGACCAGCATTC
TCAAGGTTACCCCTCACCCTCGGCGGCTCTGAACATGCCTCCAGTCTGTCCCAGCCAGTGGCCCATCT
TCAGGCCCCAGATGTCTCTGGGCCAGGAGGGGCCCACTAGATGGTCTGATCCCCAGGCCCTGGGAC
AGCAAAACAGAGGCCCAACCCCATTTAACCAGAACCAGCTGCATCAACTCAGAGCTCAGATAATGGCCTA
CAAGATGTTGGCCAGGGGCCAGCCATTGCCCGACCACCTGCAGATGGCCGTGCAAGGCAAGCGGCCGATG
CCTGGAATGCAGCAACAGATGCCAACACTACCTCCACCCTCAGTGTCCGCCACAGGACCCGGACCTGGAC
CCGGCCCTGGCCCTGGCCCTGGCCAGGACCAGCCCTCCAAATTACAGTAGACCCCATGGTATGGGAGG
GCCCAACATGCCTCCCCAGGACCCTCAGGTGTGCCCCCGGGATGCCTGGTCCAGCCGCTGGAGGGCT
CCCAAGCCATGGCCTGAAGGACCCATGGCCAATGCTGCTGCCCCACAAGCACAGAAAGCTGATTC
CTCCGCAACCAACAGGCCGTCCTTACCTGCACCTCCTGCTGTCCCGCCTGCTGCCTCACCTGTAATGCC
ACCACAAACACAGTCCCCAGGGCAGCCAGCCAGCCTGCTCCATTGGTGCCACTGCACCAGAAGCAGAGC
CGAATCACCCCATCCAGAAGCCCGAGGCCTTGACCCTGTGGAGATCCTACAAGAGCGGGAGTACAGGC
TTCAGGCTCGAATCGCACACAGAATTCAGGAACCTGAAAACCTCCCTGGGTCCCTGGCTGGGGACCTTCG
AACCAAAGCAACCATCGAACTCAAGGCCCTTAGGTTGCTGAACTCCAGAGGCAGCTGCGCCAGGAGGTG
GTGGTGTGCATGCGAAGAGACACAGCCCTGGAGACAGCCCTCAATGCCAAGGCCTACAAGCGCAGCAAAC
GTCAGTCACTACGGGAGGCCCGCATCACTGAGAAGTTGGAGAAGCAGCAGAAGATTGAACAGGAGCGCAA
GCGCCCCAGAAGCACCAGGAGTACCTCAACAGCATTCTGCAGCATGCCAAGGACTTCAGGGAGTATCAC



[View online >](#)

AGATCAGTCACAGGCAAACCTCCAGAACTACCAAGGCTGTGGCCACCTACCATGCCAACACTGAGCGGG
 AGCAGAAGAAAGAAAATGAGCGCATTGAGAAGGAGCGAATGCGGAGGCTTATGGCTGAAGATGAGGAGGG
 CTACCGCAAACCTCATTGACCAGAAGAAGGACAAGCGCCTGGCCTACCTTCTGCAGCAGACAGATGAGTAT
 GTGGCCAACTCACAGAGCTGGTGCAGCAGCACAAGCTGCCAGGTTGCCAAGGAGAAGAAGAAAA
 AGAAAAAGAAGAAGGCAGAAAAATGCTGAAGGACAGACCTGCTATTGGACCAGATGGTGAAGCTCTGGA
 TGAGACCAGCCAGATGAGTGACCTCCCTGTGAAGGTGATCCACGTGGAGAGTGGCAAGATCCTCACTGCC
 ACAGATGCCCCAAAAGCCGGCAGCTGGAAGCCTGGCTTGAATGAACCCAGGGTATGAAGTAGCCCCCA
 GGTGACAGCAGTGAAGAAAGTGGCTCTGAAGAGGAGGAGGAGGAGGAAGAGGAGCAGCCTCAGCCCGC
 ACAGCCCTTACACTGCCTGTGGAAGAAAAAGAAGATTCCAGACCCAGACAGCGATGATGTCTCTGAG
 GTGGACGCCGACACATTATTGAGAACGCCAAGCAAGATGTGGACGATGAGTACGGTGTGTCCCAGGCC
 TTGCTCGTGGCCTGCAGTCTTACTATGTGTGGCCATGCAGTACAGAGAGAGTAGATAAGCAGTCCGC
 CCTCATGGTCAACGGTGTCTCAAACAGTACCAGATCAAGGGTTTGGAGTGGCTGGTGTCCCTGTACAAC
 AACACCTGAATGGCATCCTGGCTGATGAGATGGGGCTGGGAAGACCATCCAGACCATCGCGCTCATCA
 CATACCTCATGGAGCACAAGCGCATCAACGGCCCTTCCCTCATCATCGTCCCTCTCTCGACTGTCAA
 CTGGGCGTATGAATTTGACAAGTGGGCCCTCTGTGGTGAAGGTTTCTACAAGGGCTCTCCAGCTGCA
 AGGCGAGCTTTTGTCCCACAGCTTCGCAGTGGGAAGTTCAACGTCTTACTGACCCTATGAATATATCA
 TCAAAGACAAGCATATCCTAGCCAAGATCCGCTGGAAGTACATGATTGTGGATGAAGGCCACCGCATGAA
 AAACCACCACTGCAAGTTGACGCAGGTCCTTAACACACTACGTGGCCCTCGGCGCCTGCTTCTTACA
 GGCACACCACTGCAGAACAAGCTACCGGAGCTCTGGGCCCTGCTTAACCTCCTGCTCCCCACTATCTTCA
 AGAGCTGCAGCACCTTCGAACAGTGGTTCAATGCACCTTTGCCATGACTGGAGAAAAGTGGACCTGAA
 TGAAGAGGAGACTATCCTCATTATTCGTCGCCTACACAAAGTTCTGCGGCCCTTCTGCTGCGGCGGCTC
 AAGAAGGAAGTTGAAGCCAGCTCCCTGAGAAGGTAGAGTATGTCATCAAATGCGACATGTCAGCCCTGC
 AGCGTGTGCTGTACCGTCACATGCAGGCCAAAGGTGTGCTGCTGACTGACGGCTCCGAGAAGCAGAA
 GGGCAAAGGTGGCAACCAAGACACTGATGAACACTATTATGCAACTGCGTAAAGATCTGCAACCACCCCTAC
 ATGTTCCAGCACATCGAGGAGTCCTTTTCTGAGCACTTGGGGTTCACCGCGGCATCGTGAAGGATTGG
 ACCTTTACCGTGCCTCAGGGAATTTGAACTTCTTGATAGAATTTACCCAAACTCCGTGCAACGAACCA
 TAAAGTGTCTCTTTTGCCAAATGACCTCCCTCATGACCATCATGGAAGACTACTTTGCATACCGTGGC
 TTCAAATACCTCAGGCTTGATGGAACCACAAAAGCAGAAGACCGGGGCATGCTGTTGAAAACCTTTAATG
 AACCTGGCTCTGAGTATTTCAATTTCTGCTCAGTACCCGTGCTGGGGGCTGGGCTGAATCTGCAGTC
 AGCTGACTGTGATCATCTTTGACAGTACTGGAATCCCAACAGGACCTGCAAGCACAGGATCGAGCC
 CATCGCATTGGACAGCAGAAATGAGGTGCGTGTCTTCGCTGTGCACGGTCAACAGTGTGGAAGAGAAGA
 TACTGGCTGCTGCCAAATACAACTCAATGTGGATCAGAAGGTGATCCAGGCAGGATGTTCCGACCAGAA
 GTCGTCCAGCCATGAGAGGCGTGCCTTCTGCAGGCCATCCTGGAGCACGAGGAGCAGGATGAGGAGGAA
 GATGAGGTGCCTGATGATGAGACCGTCAACCAGATGATTGCCCGCACGAAGAAGAGTTTACCTCTTCA
 TGCGCATGGACTTGGACCGCCGGCTGAAGAAGCCCGCAACCCCAAGCGGAAGCCACGCCTGATGGAAGA
 GGATGAGTCCCATCCTGGATCATCAAGGATGATGCCGAGGTGGAGCGGCTGACATGTGAAGAGGAAGAG
 GAGAAGATGTTCCGGCCGTGGTTCTCGCCACCGCAAGGAGGTAGACTACAGCGACTCACTGACAGAGAAGC
 AGTGGCTCAAGGCTATCGAGGAGGACGCTGGAGGAGATCGAAGAGGAGTCCGGCAGAAGAAAATCTTC
 ACGTAAGCGTAAGCGAGACAGCGAGGCCGGCTCCTCACCCCGACCACCAGCACCAGCCGACCCGTGACAAG
 GATGAGGAGAGCAAGAAGCAGAAGAAACGTGGGCGGCCACTGCTGAGAAGCTGTCCCAAAACCCACCTA
 ACCTCACCAAGAAGATGAAGAAGATCGTGGATGCTGTGATCAAGTACAAAGACAGCAGCAGTGGACGTCA
 GCTCAGCGAGGTGTTTCCAGCTCCCCTCTCGCAAGGAGCTTCTGAGTACTATGAGCTCATCCGAAAG
 CCTGTGGACTTCAAGAAGATCAAGGAACGCATCCGAAACCACAAGTACCGCAGCCTCAATGACCTGGAGA
 AGGATGTGATGCTGCTGTGCCAGAACGCTCAGACGTTCAACCTCGAGGGTTCCCTGATCTATGAGGACTC
 CATCGTCTGCAGTCTGTCTTACCAGCGTACGGCAGAAGATTGAGAAGGAGGACGACAGTGAAGGCGAG
 GAAAGCGAGGAGGAGGAGGAGGGCGAGGAGGAAGGCTCCGAGTCTGAGTCCCGCTCCGTCAAGGTGAAGA
 TCAAGCTGGGCCCAAGGAGAAGGCCAGGACCGACTCAAGGGGGCCCGCGCGCCAAGCCGGGGATC
 CCGGGCCAAGCCGTTGTGAGTGACGATGACAGTGAAGGAGGAGGAGGAGGACCGCTCAGGAAGTGGC
 AGTGAGGAAGAC

ACGCGTACGCGGCCGCTCGAG - GFP Tag - GTTTAA

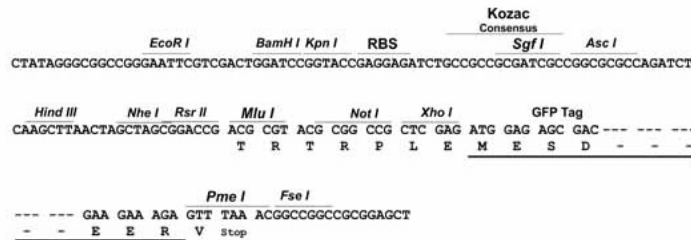
Protein Sequence: >MG212055 representing NM_011417
 Red=Cloning site Green=Tags(s)

MSTPDPPLGGTPRPGSPGPGSPGAMLGPSGPGSPGSAHSMGSPGPPSAGHPMPTQGGPGYPQDNMH
 QMHKPMESMHEKGMPPDDPRYNQMKGMGMRSGAHTGMAPPPSPMDQHSQGYPSPLGGSEHASSPVPASGSPS
 SGPQMSSSGPGGAPLDGSDPQALGQONRGPTPFNQNLHQLRAQIMAYKMLARGQPLPDHLQMAVQGKRPM
 PGMQQQMPTLPPPSVSATGPGPGPGPGPGPGPAPPNYSRPHGMGGPNMPPPGSPGVPMPGMPGQPPGGP
 PKPWPEGPMANAAAPTSTPQKLIPPQTPGRPSAPPVPPAASPVMPPQTQSPGQPAQPAPLVPLHQKQS
 RITPIQKPRGLDPVEILQEREYRLQARIAHRIQELENLPGSLAGDLRKTATIELKALRLLNFQRQLRQEV
 VVCMRRDTALETALNAKAYKRSKRQSLREARITEKLEKQKQIEQERKRRQKHQEYLNLSILQHAQKDFREYH
 RSVTGKQLKLTAVATYHANTEREQKKENERIEKERMRLMAEDEEGYRKLIDQKKDKRLAYLLQQTDEY
 VANLTELVRQHKAAQVAKEKKKKKKKKAENAEGQTPAIGPDGEPLDETSQMSDLPVKVIHVESGKILTG
 TDAPKAGQLEAWLEMNPGYEVAPRSDSEESGSEEEEEEEEEEQPPAQPPPLPVEEKKIPDPDSDDVSE
 V DARHIIENAKQVDDEYGVSQLARGLQSYAVAHAVTERVDKQSALMVNGVLKQYQIKGLEWL VSLYN
 NNLNGILADEMGLKTIQTIALITYLMEHKRINGPFLIIIVPLSTLSNWAYEFDKWAPSVVKVSYKGPAA
 RRAFVPLRSGKFNVLTTYEYIIKDKHILAKIRWKYMIVDEGHRMKNHHCKLTQVLNTHYVAPRLLLT
 GTPLQNKLPPELWALLNLLPTIFKSCSTFEQWFNAPFAMTGEKVDLNEEETILIRRLHKVLRPFLLRRL
 KKEVEAQLPEKVEYVIKCDMSALQRVLYRHMQAQGVLLTDGSEKDKKGGTKTLMNTIMQLRKICNHPY
 MFQHIEESFSEHLGFTGGIVQGLDLYRASGKFELLDRIPLKLRATNHNKVLFCQMTSLMTIMEDYFAYRG
 FKYLRLDGTTKAEDRGMLLKTTFNEPGSEYFIFLLSTRAGGLGLNLQSADTVIIFDSDWNP HQDLQAQDRA
 HRIGQQNEVRVLRCLTVNSVEEKILAAAKYKLNVDQKVIQAGMFDQKSSSHERRAFLQAILEHEEQDEEE
 DEVPDDETVNQMIARHEEEFDL FMRMDLDRRREEARNPKRKPRLMEDELPSWIKDDAEVERLTCEEEE
 EKMFGRGSRHRKEVDYSDSLTEKQWLKAIIEEGTLEEIEEEVRQKKSSRKRKRKRDSEAGSSTPTTSTRSDK
 DEESKKQKGRPPAEKLSNPNNLTKMKKIIVDAVIKYKDSSSGRQLSEVF IQLPSRKELPEYYELIRK
 PVDFKKIKERIRNHKYSRLNDLEKDVMLLCQNAQTFNLEGLSIIYEDSIVLQSVFTSVRQKIEKEDDSEGE
 EEEEEEGEEGSESESRSVKVVIKLGRIKKAQDRLKGGRRRPSRGSRAKPVVSDDDSEEEQEEDRSGSG
 SEED

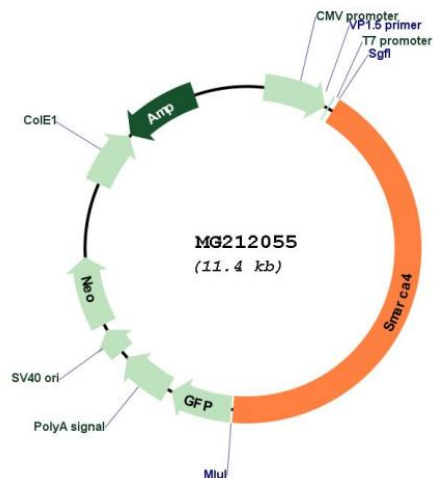
TRTRPLE - GFP Tag - V

Restriction Sites: SgfI-MluI
 Cloning Scheme:

Cloning sites used for ORF Shutting:



Plasmid Map:



ACCN: NM_011417

ORF Size: 6364 bp

OTI Disclaimer: The molecular sequence of this clone aligns with the gene accession number as a point of reference only. However, individual transcript sequences of the same gene can differ through naturally occurring variations (e.g. polymorphisms), each with its own valid existence. This clone is substantially in agreement with the reference, but a complete review of all prevailing variants is recommended prior to use. [More info](#)

OTI Annotation: This clone was engineered to express the complete ORF with an expression tag. Expression varies depending on the nature of the gene.

Components: The ORF clone is ion-exchange column purified and shipped in a 2D barcoded Matrix tube containing 10ug of transfection-ready, dried plasmid DNA (reconstitute with 100 ul of water).

Reconstitution Method:

1. Centrifuge at 5,000xg for 5min.
2. Carefully open the tube and add 100ul of sterile water to dissolve the DNA.
3. Close the tube and incubate for 10 minutes at room temperature.
4. Briefly vortex the tube and then do a quick spin (less than 5000xg) to concentrate the liquid at the bottom.
5. Store the suspended plasmid at -20°C. The DNA is stable for at least one year from date of shipping when stored at -20°C.

RefSeq: [NM_011417.3](#), [NP_035547.2](#)

RefSeq Size: 5521 bp

RefSeq ORF: 4845 bp

Locus ID: 20586

UniProt ID: [Q3TKT4](#)

Cytogenetics: 9 7.84 cM

Gene Summary: Involved in transcriptional activation and repression of select genes by chromatin remodeling (alteration of DNA-nucleosome topology). Component of SWI/SNF chromatin remodeling complexes that carry out key enzymatic activities, changing chromatin structure by altering DNA-histone contacts within a nucleosome in an ATP-dependent manner. Component of the CREST-BRG1 complex, a multiprotein complex that regulates promoter activation by orchestrating the calcium-dependent release of a repressor complex and the recruitment of an activator complex. In resting neurons, transcription of the c-FOS promoter is inhibited by SMARCA4-dependent recruitment of a phospho-RB1-HDAC repressor complex. Upon calcium influx, RB1 is dephosphorylated by calcineurin, which leads to release of the repressor complex. At the same time, there is increased recruitment of CREBBP to the promoter by a CREST-dependent mechanism, which leads to transcriptional activation. The CREST-BRG1 complex also binds to the NR2B promoter, and activity-dependent induction of NR2B expression involves the release of HDAC1 and recruitment of CREBBP (By similarity). Belongs to the neural progenitors-specific chromatin remodeling complex (npBAF complex) and the neuron-specific chromatin remodeling complex (nBAF complex). During neural development, a switch from a stem/progenitor to a postmitotic chromatin remodeling mechanism occurs as neurons exit the cell cycle and become committed to their adult state. The transition from proliferating neural stem/progenitor cells to postmitotic neurons requires a switch in subunit composition of the npBAF and nBAF complexes. As neural progenitors exit mitosis and differentiate into neurons, npBAF complexes which contain ACTL6A/BAF53A and PHF10/BAF45A, are exchanged for homologous alternative ACTL6B/BAF53B and DPF1/BAF45B or DPF3/BAF45C subunits in neuron-specific complexes (nBAF). The npBAF complex is essential for the self-renewal/proliferative capacity of the multipotent neural stem cells. The nBAF complex along with CREST plays a role in regulating the activity of genes essential for dendrite growth. SMARCA4/BAF190A may promote neural stem cell self-renewal/proliferation by enhancing Notch-dependent proliferative signals, while concurrently making the neural stem cell insensitive to SHH-dependent differentiating cues. Acts as a corepressor of ZEB1 to regulate E-cadherin transcription and is required for induction of epithelial-mesenchymal transition (EMT) by ZEB1 (By similarity). Binds via DLX1 to enhancers located in the intergenic region between DLX5 and DLX6 and this binding is stabilized by the long non-coding RNA (lncRNA) Evf2 (PubMed:26138476). Binds to RNA in a promiscuous manner (PubMed:26138476). Binding to RNAs including lncRNA Evf2 leads to inhibition of SMARCA4 ATPase and chromatin remodeling activities (PubMed:26138476).[UniProtKB/Swiss-Prot Function]