

Product datasheet for **MG212053**

Lrp6 (NM_008514) Mouse Tagged ORF Clone

Product data:

Product Type:	Expression Plasmids
Product Name:	Lrp6 (NM_008514) Mouse Tagged ORF Clone
Tag:	TurboGFP
Symbol:	Lrp6
Synonyms:	C030016K15Rik; Cd; Gw; ska26; ska; skax26
Mammalian Cell Selection:	Neomycin
Vector:	pCMV6-AC-GFP (PS100010)
E. coli Selection:	Ampicillin (100 ug/mL)
ORF Nucleotide Sequence:	>MG212053 representing NM_008514 Red=Cloning site Blue=ORF Green=Tags(s)

TTTTGTAATACGACTCACTATAGGGCGGCCGGAATTCGTCGACTGGATCCGGTACCGAGGAGATCTGCC
GCC**CGATCGCC**

ATGGGGGCGGTGCTGAGGAGCCTCTGGCCTGCAGTTCTGCGTGCTGCTGAGAGCGGCCCTTTGTTGC
TTTATGCAAACAGACGGGACTTGAGATTGGTTGATGCTACAAATGGCAAAGAGAATGCAACGATTGTAGT
TGGAGGCTTGGAGGATGCAGCTGCGGTGGACTTTGTGTTGGTCATGGCTTGATACTGGAGTGATGTC
AGCGAAGAAGCCATTAACGAACAGAATTAACAAAAGTAAAGTGTACAGAATGTTGTTGTTCTGGAT
TATTGTCCCGGATGGGCTGGCATGTGATTGGCTTGGAGAAAAATGACTGGACAGATTCTGAAACTAA
TCGTATTGAAGTTTCTAATTTAGATGGATCTTTACGAAAAGTTTTATTTGGCAAGAGTTGGATCAACCC
AGAGCTATTGCCTTAGATCCATCAAGTGGTTCATGACTGGACAGACTGGGAGAAAGTGCCAAAGATAG
AACGTGCTGGGATGGATGGCTCAAGTCGCTTCGTTATAATAAACACAGAGATTTACTGGCCAAACGGACT
GACTCTGGACTATCAGGAGCGGAAGCTTACTGGGCCGATGCAAAACTTAATTTTCATCCATAAATCAAAC
CTGGATGGAACAAACCGGCAGGCAGTGGTTAAAGGTTCCCTTCCACATCCTTTGCGCTTGACGTTATTTG
AGGACACATTGTACTGGACTGACTGGAATACACACTCTATTTGGCTTGAACAAATATACTGGCGAGGG
TCTGCGTAAAATTCATTCAACATCTTCTCCCATGGATACATGCTTTCAGCCAACAGAGGCAGCCA
AATGCTACAAATCCATGTGGAATTGATAATGGTGGTTGTTCCCATTTGTGTTGATGCTCCAGTCAAGC
CTTTTTATCAGTGTGCTTGCCCAACTGGGTCAAGCTGCTGGAGAATGGAAGACCTGCAAAGATGGTGC
CACTGAACTATTGCTGTTAGCCCGACGGACAGACTTGAGGCGAATTTCTTTGGATACACCCGATTTTACT
GACATTGTTCTGCAGTTAGAAGATATCCGGCATGCCATTGCCATAGACTATGACCCTGTAGAAGGCTACA
TATACTGGACGGATGACGAAGTGAGGGCTATCCGTCGCTCCTTCATAGATGGATCTGGCAGTCAGTTGT
GGTCACGGCCAGATTGCTCATCCTGATGGTATTGCTGTTGACTGGGTTGCAAGGAACCTGACTGGACA
GACTGGCACGGATCGTATAGAAGTGACAAGGCTCAATGGGACCATGAGGAAGATCTTGATTTAGAGG
ACTTAGAGGAGCCCCGGGCTATCGTGTTAGATCCCATGGTTGGGTACATGATTGGACAGACTGGGAGA
AATCCCAAAAATAGAGCGAGCTGCTCTGGACGGATCTGACCGAGTAGTCTTGCAACACTCCCTTGGT



[View online »](#)

TGGCAAACGGCTTAGCCCTGGATTATGATGAAGGCACAATATACTGGGGAGATGCCAAAACAGACAAA
 TTGAGGTTATGAATACCGATGGCACCGGGAGGCGAGTGCTGGTGAAGACAAGATCCCTCACATATTTGG
 GTTTACCTTGCTGGGTGACTATGTTTACTGGACTGACTGGCAGAGGGCGGAGCATCGAGAGAGTACACAAA
 CGGAGCGCAGAGAGGGGAGGTCATCATAGATCAGCTGCCAGACCTCATGGGACTGAAGGCCACAAGTGTC
 ACAGAATCATTGGTTCTAACCCCTGTGCTGAGGACAATGGAGGATGTAGCCATCTTTGCCTGTACAGGCC
 TCAGGGGCTTCGATGCGCCTGTCCCATTGGCTTTGAGCTCATCAGTGACATGAAGACATGCATTGTCCCC
 GAGGCTTTCTTCTGTTCTCGAGGAGAGCGGATATCAGACGCATATCTTTGAAAACAACAACAACATG
 TGGCCATTCTCTCACTGGTGTCAAAGAAGCCTCTGCTTTGGATTTTGATGTCACAGACAACAGGATTTA
 CTGGACTGATATCACTGAAGACTATTAGCAGAGCCTTTATGAATGGCAGTGCCTGGAACATGTGGTA
 GAGTTTGGCTTAGATTATCCAGAAGGCATGGCAGTGGACTGGCTTGGGAAGAACTTATACTGGGCAGACA
 CAGGAACAAATCGCATTGAGGTATCGAAGTTGGACGGACAGCACCAGAGTTTTGGTATGGAAAGACCT
 TGACAGTCTCGAGCTCTGGCACTGGATCTGCTGAAGGGTTTATGTATTGGACTGAGTGGGGAGGCAAG
 CCTAAGATTGACAGGGCTGCTATGGATGGAAGTGAACGCACTACATTAGTTCCAATGTAGGCCGAGCAA
 ATGGTCTCACCATCGACTATGCTAAAAGGCGGCTTACTGGACAGACCTGGACACTAACCTAATAGAATC
 CTCAGATATGCTCGGACTCAACCGTGAAGTTATAGCAGATGACTGCCTCATCTTTTGGCTTAACTCAG
 TACCAAGATTACATCTACTGGACAGACTGGAGCCGACGACGATTGAACGTGCCAACAAAACAGTGGCC
 AAAACCGCACCATCATCCAGGGCATTGGACTATGTGATGGACATCCTGGTCTTCCACTTTCCCGGCA
 GGCAGGGTGAATGAGTGTGCCTCCAGCAACGGGCACTGCTCCCACCTCTGCTTGGCTGTGCCCGTCGGA
 GGTTTTGTGTGGATGCCCTGCCCACTACTCCCTGAATGCTGACAACAGGACCTGCAGTGTCCCACCA
 CCTTCTGCTCTTCAGTCAGAAGAGCGCCATCAACCGCATGGTGATTGATGAACAACAGAGCCCTGACAT
 CATCTTCTATCCACAGCCTTCGGAACGTCCGGGCCATTGACTATGACCCTTTGGACAAGCAGCTCTAC
 TGGATTGACTCTGACAAAATCCATACGAAAGGCACATGAAGATGGTGGCCAGGGTTTTAATGTAGTTG
 CAACTCAGTCGCAAATCAGAACCTTGAATACAGCCCTATGATCTCAGCATTGATATTTAGCCGTTA
 CATCTACTGGACCTGTGAAGCTACCAATGTCATTGATGTGACGAGATTAGATGGACGATCAGTTGGAGTG
 GTTCTAAAAGGCGAGCAAGACAGACCTCGAGCCATTGTGGTAAACCCCGAAAAGGGTATATGATTTTA
 CCAATCTTCAGGAAAGATCTCCTAAAATGAACGGGCTGCATTGGATGGTACAGAACGAGAGGCTCCTCT
 TTTCAAGTGGCTTAAAGTAAACCAATTGCTTTGGCTCTTGATAGCAAGCTGGGCAAGCTCTTCTGGGCTGAC
 TCAGATCTCCGGCGAATTGAAAGCAGTGATCTCTCAGGTGCCAACAGGATCGTGTAGAAGACTCTAATA
 TATTACAGCCTGTGGCCTGACCCTGTTTGAAGTGGCTCTATTGGATTGATAAACAGCAGCAGATGAT
 TGAAAAAATTGACATGACTGGTTCGAGAAGGAAGAACCAAGGTCCAGGCTCGAATTGCTCAGTGTAGTAC
 ATCCATGCAGTAAAGGAGCTGAACCTTCAGGAGTACAGACAGCACCTTGTGCCAGGATAATGGTGGCT
 GTTCACATATCTGCCTTGTAAAAGGAGATGGTACGACAAGATGCTCCTGCCCATGCACTTAGTTCTGCT
 TCAGGATGAGCTGTCTGTGGAGAGCCTCCAACGTGTTCTCCTCAGCAGTTTACCTGCTTCACTGGGGAC
 ATTGACTGCATCCCTGTGGCTTGGCGGTGTGATGGGTTCACTGAGTGCGAAGACCACAGCGATGAACTCA
 ATTGTCCCGTGTGCTCAGAGTCTCAGTTCAGTGTGCCAGCGGCGAGTGCATTGATGGTGGCCTTCGATG
 CAATGGCGATGCGAATGGTCAAGGACAAATCAGATGAGAAGAACTGTGAAGTGCTTTGTTAATGATCAG
 TTCCGCTGTGCCAATGGTCAAGTGGTGGAAAGCACAAGAAATGTGACCACAGTGTGGACTGCAGTGACA
 GATCTGACGAGCTGGACTGTTATCCAACGAGGAGCCAGCACCACAAGCCACCAACAGTTGGTTCTGT
 TATTGGAGTAATTGTACCAATTTTGTGCTGGAACCATATACTTTATCTGCCAGAGGATGCTGTGTCCT
 CGTATGAAGGGAGACGGGAGACCATGACTAACGACTATGTGGTTCACAGCCCGGCTGTGCCCCCTTG
 GTTATGTTCTCACCAAGCTCTCTCTGGATCTCTTCCAGGAATGTCTCGAGGCAATCAATGATCAG
 TTCCCTCAGTATCATGGGGGAAGCAGTGGGCCCCCTATGATCGAGCGCACGTACGGGAGCCTCCTCA
 AGCAGTCTTCCAGTACCAAGGCACCTACTTCCCTGCAATTTTGAACCCACCACCATCGCTGCCACAG
 AAAGATCCATTATACCATGGAATTTGGTTATTCTTCCAACAGTCTTCCACACATAGGTCTACAGCTA
 TAGGCCGTACAGTACCGGCACTTTGCACCGCCACCACCCCTGCAGCACTGATGTCTGTGACAGTAC
 TATGCTCTAGCCGGAGGATGACCTCGGTGGCAACAGCCAAGGGTACACCAGTACGTTGAACTATGACT
 CAGAACCTGTGCCCCACCGCCACACCCCGAAGCCAGTACTTGTGAGCGGAGGAGAACTATGAAAGCTG
 CCCCCCTTCCCACATACAGGAGAGGAGTACTCCACCACCTTACCCGCCACCACCTCCCCCTGCAGC
 GACTCCTCC

ACGCGTACGCGGCCGCTCGAG - GFP Tag - GTTTAA

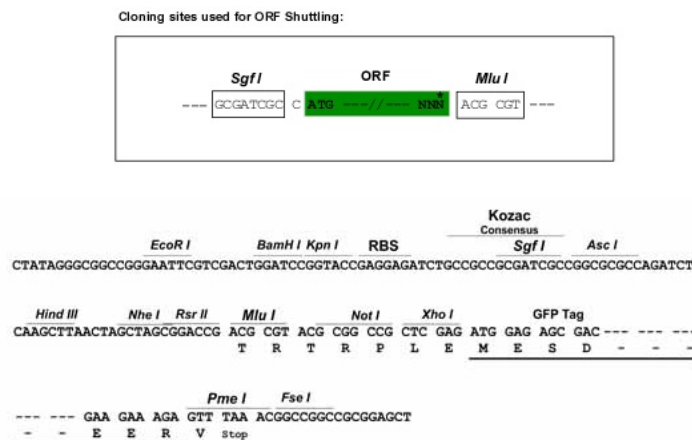
Protein Sequence: >MG212053 representing NM_008514
 Red=Cloning site Green=Tags(s)

MGAVLRSLACSFVLLRAAPLLLYANRRDLRLVDATNGKENATIVVGGLEDAAAVDFVFGHGLIYWSDV
 SEEAIKRTEFNKTESVQNVVVSGLLSPDGLACDWLGEKLYWTDSETNRIEVSNDGSLRKVLFWQELDQP
 RAIALDPSSGFMWTDWGEVPKIERAGMDGSSRFVIINTEIYWPNGLLDYQERKLYWADAKLNF IHKSN
 LDGTNRQAVVKGSLPHFPALTLFEDTLYWTDWNTHSILACNKYTGEGREIHSNIFSPMDIHAFSQQRQP
 NATNPCGIDNGGCSHLCLMSPVKPFYQCACPTGVKLENGKTKDGATELLLLARRDLRRIISLDTPDFT
 DIVLQLEDIRHAIADYDPVEGYIYWTDDEVRAIRRSFIDGSGSQFVVTQAIAHPDGIADVVARNLWY
 DTGTDRIEVRTLNGTMRKILISEDLEEPRAIVLDPVMGYMYWTDWGEIPKIERAALDGSDRVVLVNTSLG
 WPNGLALDYDEGTIYWGDAKTDKIEVMNTDGTGRRVLVEDKIPHIFGFTLLGDYVYWTDWQRRSIEVHK
 RSAEREVIDQLPDLMLKATSVHRIIGSNPCAEDNGGCSHLCLYRQGLRCACPIGFELISDMKTCIVP
 EAFLLFSRRADIRRIISLETNNNNVAIPLTGVKEASALDFDVTDNRIYWTDISLKTISRAFMNGSALEHV
 EFGLDYPEGMAVDWLGNLYWADTGTNRIEVSKLDGQHRQVYLVKDLDSPRALALDPAEGFMYWTEWGGK
 PKIDRAAMDGSERTTLVNVVGRANGLTIDYAKRRLYWTDLDTNLIESSDMLGLNREVIADDLPHPFGLTQ
 YQDIYIYWTDWSRRSIEERANKTSGQNRTIIQGHLDYVMDILVFHSSRQAGWNECASSNGHCSHLCLAVPVG
 GFVCGCPAHYSLNADNRTCASPTTFLFSQKSAINRMVIDEQQSPDIILPIHSLRNVRAIDYDPLDKQLY
 WIDSRQNSIRKAHEDGGQGFNVVANSVANQNLEIQPYDLSIDIYSRYIYWTCEATNVIDVTRLDGRSVGV
 VLKGEQDRPRAIVVNPEKGYMYFTNLQERSPKIERAALDGTEREVLFSSGLSKPIALALDSKLGKLFWAD
 SDLRRIESSDLSGANRIVLEDSNILQPVGLTVFENWLWIDKQQQMIKIDMTGREGRTKQVARIQLSD
 IHAVKELNLQEYRQHPCAQDNGGCSHLCLVKGDGTRCSCPMHLVLLQDELSCGEPPTCSPQQTCTFGD
 IDCIPVAWRCDGFTECEDHSDLNCPVCSSESQFQCASGQCIDGALRCNGDANCQDKSDEKNCEVLCIDQ
 FRCANGQCVGKHKKCDHSVDCSDRSDELDCYPTTEEPAPQATNTVGSVIGVIVTIFVSGTIYFICQMLCP
 RMKGDGETMTNDYVHSPASVPLGYVPHPSLSSGSLPGMSRGKSMISLSSIMGGSSGPPYDRAHVTCASS
 SSSSSTKGTYPAILNPPSPATERSHYTMEFGYSSNSPSTHRSYSYRYPYSYRHFAPPTTPCSTDVCDSD
 YAPSRMTSVATAKGYTSDVNYDSEVPVPPPTPRSQYLSAEENYESCPPSPYTERSYSHHLVPPPPSPCT
 DSS

TRTRPLE - GFP Tag - V

Restriction Sites: SgfI-MluI

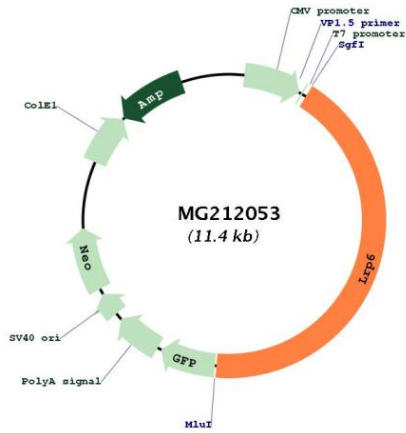
Cloning Scheme:



ACCN: NM_008514

ORF Size:	4839 bp
OTI Disclaimer:	<p>Due to the inherent nature of this plasmid, standard methods to replicate additional amounts of DNA in E. coli are highly likely to result in mutations and/or rearrangements. Therefore, OriGene does not guarantee the capability to replicate this plasmid DNA. Additional amounts of DNA can be purchased from OriGene with batch-specific, full-sequence verification at a reduced cost. Please contact our customer care team at custsupport@origene.com or by calling 301.340.3188 option 3 for pricing and delivery.</p> <p>The molecular sequence of this clone aligns with the gene accession number as a point of reference only. However, individual transcript sequences of the same gene can differ through naturally occurring variations (e.g. polymorphisms), each with its own valid existence. This clone is substantially in agreement with the reference, but a complete review of all prevailing variants is recommended prior to use. More info</p>
OTI Annotation:	This clone was engineered to express the complete ORF with an expression tag. Expression varies depending on the nature of the gene.
Components:	The ORF clone is ion-exchange column purified and shipped in a 2D barcoded Matrix tube containing 10ug of transfection-ready, dried plasmid DNA (reconstitute with 100 ul of water).
Reconstitution Method:	<ol style="list-style-type: none"> 1. Centrifuge at 5,000xg for 5min. 2. Carefully open the tube and add 100ul of sterile water to dissolve the DNA. 3. Close the tube and incubate for 10 minutes at room temperature. 4. Briefly vortex the tube and then do a quick spin (less than 5000xg) to concentrate the liquid at the bottom. 5. Store the suspended plasmid at -20°C. The DNA is stable for at least one year from date of shipping when stored at -20°C.
RefSeq:	NM_008514.4 , NP_032540.2
RefSeq Size:	9368 bp
RefSeq ORF:	4842 bp
Locus ID:	16974
UniProt ID:	O88572
Cytogenetics:	6 65.37 cM
Gene Summary:	<p>Component of the Wnt-Fzd-LRP5-LRP6 complex that triggers beta-catenin signaling through inducing aggregation of receptor-ligand complexes into ribosome-sized signalsomes. Cell-surface coreceptor of Wnt/beta-catenin signaling, which plays a pivotal role in bone formation. The Wnt-induced Fzd/LRP6 coreceptor complex recruits DVL1 polymers to the plasma membrane which, in turn, recruits the AXIN1/GSK3B-complex to the cell surface promoting the formation of signalsomes and inhibiting AXIN1/GSK3-mediated phosphorylation and destruction of beta-catenin. Required for posterior patterning of the epiblast during gastrulation (By similarity).[UniProtKB/Swiss-Prot Function]</p>

Product images:



Circular map for MG212053