

Product datasheet for **MG212048**

Eif4g1 (NM_145941) Mouse Tagged ORF Clone

Product data:

Product Type:	Expression Plasmids
Product Name:	Eif4g1 (NM_145941) Mouse Tagged ORF Clone
Tag:	TurboGFP
Symbol:	Eif4g1
Synonyms:	E030015G23Rik; eIF-4-gamma 1; eIF-4G 1; eIF-4G1; eIF4GI
Mammalian Cell Selection:	Neomycin
Vector:	pCMV6-AC-GFP (PS100010)
E. coli Selection:	Ampicillin (100 ug/mL)
ORF Nucleotide Sequence:	>MG212048 representing NM_145941 Red=Cloning site Blue=ORF Green=Tags(s)

TTTTGTAATACGACTCACTATAGGGCGGCCGGAATTCGTCGACTGGATCCGGTACCGAGGAGATCTGCC
GCC**CGATCGCC**

ATGAACAAAGCTCCCCAGCCACAGGCCCCACCCGCCAGGTCCCCTGGACTCCCACAGCCAGCGTTTC
CCCCGGGGCAGACTGCACCGGTGGTGTAGCAGCGCTCAAGCGACACAAATGAACACGCCTTCTCAGCC
CCGCCAGGGAGGATTCAGGTCTCTGCAGCACTTCTACCCAGCCGGGCCAGCCCCCTAGCAGTGCAGCC
TCCCGAGTGCAGAGTGCAGCCCCGCCCCGCTCTGGCCAGCTCCCATGTCTACCCTGCTGGATCCCAAG
TAATGATGATCCCTTCCAGATCTCTACTCAGCCTCCCAAGGAGCTACTATATCCCTGGACAGGGGCG
TTCCACATATGTTGTCCCAACACAGCAGTACCCTGTGCAGCCAGGAGCCCCAGGCTTCTATCCAGGTGCA
AGCCCTACCGAGTTTGGACCTATGCTGGAGCCTATTACCCAGCCCAAGGTGTGCAGCAGTTTCTGCTA
GTGTGGCTCCTGCCCCAGTTTTGATGAACCAGCCACCCAGATTGCTCCTAAGAGGGAACGGAAAATAT
CCGAATTCGAGACCCAAACCAAGGAGGGAAGGATATCACAGAAGAGATCATGTCTGGGGCCCGCACTGCC
TCCACACCCACTCCTCCCAGACGGGAGGAGTCTGGAGCCTCAACCAATGGGGAGTCGCTCAGGTTG
CTGTCAATATCCGGCCAGATGACCGGTGCGAGGAGCAGCCATTGGGGGGCGCCAGGACTGCCTGGCCC
AGAGCATAGCCCTGGCACAGAATCTCAGCCTTCGTCGCTTCTCCAACCCCATCACCACCCCAATTTTG
GAGCCGGGTCTGAGTCTAATCTTGGAGTCTCTATTCTGGGACACTATGACAACAGGGATGATAC
CAATGTCTGTAGAAGAATCGACCCCTATCTTGTGAAACTGGGGAGCCGTATTGCCTCTCTCCAGAACC
CACTCTTGCCGAACCCATACTGGAAGTAGAAGTGACACTCAGCAAACCCATTCCAGAATCTGAGTTCTCT
TCCAGTCTCTCCAGTTTCCACGGCCCTGGTGCCTCACAAGGTTGAAACTCATGAGCCCAATGGCGTGA
TCCCATCTGAGGATCTGGAACAGAGGTGGAGTCAAGCACAGAGCCAGCTCCTCCCCCTCTATCACCTTG
TGCTTCTGAATCGCTCGTCCCATTGCTCCAAGTCCCAGCCTGAGGAACTGCTCAACGGAGCCCCCTCA
CCACCAGCTGTGGATTAAGCCAGTCACTGAGCCAGAGGAACAGGCCAAGAAGGTTTCATCAGCAGCAC
TGGCCAGCATTCTCTCTCTGCTCCACCTGTGGCTCCTCAGATACTTCTCTGCTCAGGAGGAAGAAAT
GGAAGAAGATGACGATGACGAAGAAGGTGGAGAAGCTGAGAGTGAGAAGGGAGGAGGAGCTCCCCCT



[View online >](#)

GACAGTACTCCTGTCCCAGCCCAGCTGTCTCAGAATTTAGAGGTGGCAGCAGCTACCCAGGTGGCAGTGT
 CTGTGCCAAAGAGGAGACGGAAAATTAAGAGCTAAATAAGAAGGAGGCTGTAGGAGACCTTCTAGATGC
 CTTCAAGGAGGTGGACCCAGCAGTACCAGAGGTAGAGAATCAGCCTCCCAGTGGCAGCAACCCAGCCCA
 GAGTCTGAGGGCAGCATGGTGCCACACAGCCTGAGGAAACAGAAACCTGGGACTCTAAGGAAGACA
 AAATTCATAATGCTGAGAACATCCAGCCTGGGGAGCAGAAGTATGAGTACAAGTCAGATCAGTGGAAAGCC
 TCTAAACCTTGAAGAAAAGAAGCGTTATGACAGAGAATTCCTGCTGGGCTTTCAGTTCATCTTTGCCAGC
 ATGCAGAAGCCAGAAGGATTGCCCATATCACTGATGTGGTGTCTGGACAAGGCCAATAAAACACCACTTC
 GGCAACTGGATCCCTCCAGACTACCTGGCATAAACTGTGGCCAGATTTCACTCCATCTTTTGCCAATCT
 TGGCCGACCAGCCCTCAGCAACCGTGGGCCCCGAGGGGTGGGCCAGGTGGGGAGCTGCCCGAGGGCCG
 GCTGGCCTGGGACCCAGGCGCTCTCAGCAGGGCCACGAAAGGAAACTCGCAAGATCATTTCCTCAGTGA
 TAATGACTGAAGACATAAACTAAATAAAGCAGAGAAGGCTTGGAAACCCAGTAGCAAACGGACAGCAGC
 TGATAAGGATCGAGGGGAAGAGGATGCTGATGGAAGCAAGACCCAGGACCTGTTCCCGAGGGTACGCTCC
 ATCCTGAATAAGCTGACACCCAGATGTTTCAGCAGCTGATGAAGCAGGTGACACAGCTGGCCATTGACA
 CGGAGGAACGCCCTCAAAGGAGTTATTGACCTCATCTTTGAGAAAGCCATTTAGAGCCCACTTCTCTGT
 GGCTTATGCCAACATGTCCGCTGCCTCATGGCGTGAAAGTGGCCACTACAGAAAAGCCAAACGTAAC
 GTGAATTTTCGAAAACCTGTTGTTAAATCGGTGCCAGAAGGAATTTGAGAAAGACAAAAGATGATGATGAAG
 TTTTTGAAAAAAGCAAAAAGAGATGGATGAAGCTGCTACGGCAGAAGAACGGGGACGCCTGAAAGAAGA
 GCTAGAAGAAGCCGGGACATAGCTAGGCGGCGCTCTTTAGGGAATATCAAGTTTATTGGAGAGTTATTC
 AAGTTGAAGATGTTAACAGAAGCAATAATGCATGACTGTGTGGTCAAGCTACTTAAGAACCATGATGAGG
 AGTCCCTGGAATGCCTCTGCCGCTCCTCACCCTATAGGCAAAGACCTGGACTTTGCAAAAAGCCAAAGCC
 TCGAATGGATCAGTATTTCAACCAATGGAAAAATCATTAAGAAAAGAAGACCTCATCTCGCATCCGT
 TTTATGCTGCAGGATGACTCGATCTGCCGAGAGTAAATGGGTGCCACGCCGAGGGGATCAGGGTCCTA
 AGACTATTGATCAAATTCACAAGGAGGCTGAGATGGAAGAGCACCGAGAACATATTAAGTACAGCAGC
 CATGGCCAAGGGCAGCGACAAACGTCGGGGTGGCCCTCCAGGCCCGCTATCAACCGTGGCTTCCACTT
 GTAGATGATGGTGGTGGAAACAGTCCCATAGCAAAGGCAGTCGCCCATGACACCTCACGGCTCA
 CCAAGATCACAAGCCTGGTTCATTGATTCTAACAACCAGCTTTTTGACCTGGAGGACGACTGAGTTG
 GGGCAAGGGCAGCAGTGGGGCTCAGGAGCCAAGCCCTCAGACACAGCATCGGAAGCTACTCGTCCAGCT
 ACCTTGAATCGCTTTCTGCTCTTCAACAACATTACCCGAGAGAACACAGATAACAGACGTGTTGTAC
 AGAGGAGTAGCTTGAAGCCGGAACGAGGTGAGAAAGCTGGGGACCGGGGAGACCGACTAGAGCGGAGTGA
 GCGGGGAGGTGACCGTGGGGACCGACTTGATCGTGCCAGAACACCTGCCACCAAGCGAAGTTTTAGCAA
 GAAGTGGAGGAGCAAGTAGAGAGCGGCCATCCCAGCCTGAGGGACTCCGCAAGGCAGCTAGCCTCACAG
 AGGATCGTGGTCCGGATCCTGTGAAGCGGGAAGCCACTTACCTCCAGTAGACCCCTCAAAGGCTGCGCT
 GTCTGTGGATGAGGTGGAGAAGAAATCTAAGGCCATCATTGAGGAATATCTCCATCTCAATGACATGAAG
 GAGGCAGTACAGTGTGTCCAGGAGCTGGCTTACCCTCCTTGCTCTTATCTTCTGACGGCTTGGTATCG
 AGTCCACGCTGGAGCGTAGTACCATTGCTGCTGAGCATAATGGGGCGACTACTGCACCAACTGCTCTGTGC
 GGGGCACCTCTCTACTGCCAGTACTATCAAGGGCTGTATGAAACACTAGAATTGGCTGAGGACATGGAA
 ATTGATATCCCTCATGTATGGCTTTACCTGGCAGAAGTATTACCTATTTCCAGGAAGATGGGGTGC
 CCATGGGAGAGCTCTTCAGGGAAATACGAAGCCTCTGAGACCCATGGGCAAAGCTACTTCTTTATTGCT
 GGAGACTCTGGTCTCTTATGCAAGAGCATGGGTCCCAAAAAGGTGGGGATGCTGTGGCGAGAGGCTGGG
 CTGAGCTGGAGGGAATTTCTAGCAGAGGGCCAAGACGTTGGCTCATTTGTGGCTGAAAAGAAGGTGGAAT
 ATACCTTGGGAGAAGAATCTGAAGCTCCTGGCCAGAGGACACTTGCCCTTGGAGGCTTCGTAGGCAGCT
 AGAGAAGCTGCTGAAGGACGGCGCAGTAAATCAGCGTGTGTTGACTGGATAGACGCCAACCTAAATGAG
 CAGCAGATAGCATCCAATACATTAGTTCGAGCCCTCATGACAAGTGTCTGTTATTCTGCAATTATCTTTG
 AGACTCCTCTCCGAGTGGATGTTCAAGTGTGAAAGTGCAGCAAGACTGCTGCAGAAATACCTGTGTGA
 TGAGCAGAAGGAGCTACAAGCACTCTATGCTCTCAGGCCCTTGTAGTACCTTAGAACAGCCTGCCAAC
 CTGCTTCGGATGTTCTTTGATGCTCTATATGATGAGGACGTGGTGAAGGAAGACGCCTTCTACAGCTGGG
 AGAGCAGCAAGGATCCTGCTGAACAGCAGGGCAAGGGTGTGGCCCTAAATCTGTACAGCATTCTCAA
 TTGGCTTCGTGAGGCTGAGGACGAGGAGTCTGATCAACAAC

ACGCGTACGCGGCCGCTCGAG - GFP Tag - GTTTAA

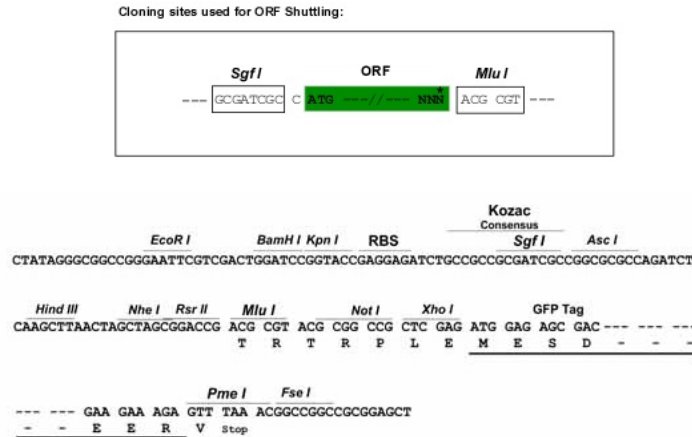
Protein Sequence: >MG212048 representing NM_145941
 Red=Cloning site Green=Tags(s)

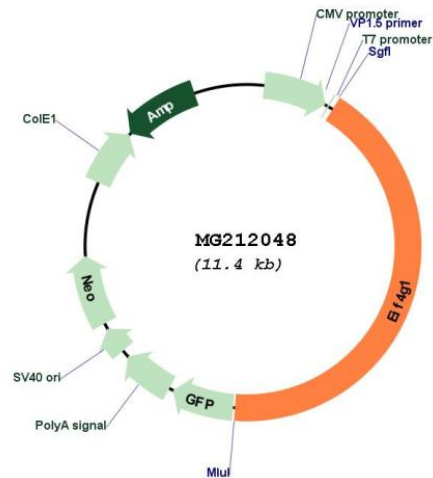
MNKAPQPTGPPPARSPGLPQPAFPPGQTAPVVFSTPQATQMNTPSQPRQGGFRSLQHFYPSRAQPPSSAA
 SRVQSAAPARPGPAPHVYPAGSQVMMIPISQISYSASQGAYYIPGQGRSTYVVPTQQYPVQPGAGFYPGA
 SPTEFGTYAGAYPAQGVQQFPASVAPAPVLMNQPPQIAPKRERKTIRIRDPNQGGKDITEEIMSGARTA
 STPTPPQTGGSLPQPNGESPQVAVIIRPDDRSQGAAGIGRRPGLPGPEHSPGTESQSPSSPPTSPPPIL
 EPGSESNLGVLSIPGDTMTTGMI PMSVEESTPIS CETGEPYCL SPEPTLAEP ILEVEVTL SKPIPESEFS
 SSPLQVSTALVPHKVETHEPNGVIPSEDL EPEVESSTEPAPPPLSPCASESLVPIAPTAQPEELLNGAPS
 PPAVDLSPVSEPEEQAKKVSSAALASILSPAPPVAPSDTSPAQEEEMEEDDDDEEGGEAESEKGGEDVPL
 DSTPVPAQLSQNLEVAATQVAVSVPKRRRIKELNKKEAVGDL L DAFKEVDP AVPEVENQPPTGSNPSP
 ESEGS MVPTQPEETEETWDSKEDIHNAENIQPGEQKYEYKSDQWKPLNLEEKRYDRELLGFQFIFAS
 MQKPEGLPHITDVVLDKANKTPLRQLDPSRLPGINCGPDFTPSFANLGRPALSNRGP RGGPGGELPRGP
 AGLGRRSQQGRKTRKIISSVIMTEDIKLNKAEKAWK P SSKRTAADKDRGEEDADGSKTQDLFRRVRS
 ILNKLTPQMFQQLMKQVTLAIDTEERLKGVIDLIFEKAISEPNFSVAYANMCRCLMALKVPTTEKPTVT
 VNRFRKLLLNRCQKFEFKDKDDDEVFEKKQKEMDEAATAEERGR LKEELEEARDIARRRSLGNIKF IGELF
 K LKMLTEAIMHDCVVKLLKNHDEESLECLRLLTTIGKDLDFAKAKPRMDQYFNQMEKIIKEKKTSSRIR
 FMLQDVLDLRQSNWVPRRGDQGPKTIDQIHKEAEMEEHREHIKVQQLMAKGS DKRRGGPPPINRGLPL
 VDDGGWNTVPI SKGSRPIDTSRLTKITKPGSIDSNNQLFAPGGRLSWGKGS SGGSGAKPSDTASEATRPA
 TLNRF SALQQTLP AENTDNRRVVQRSSL SREGEKAGDRGDR LERSERGGDRGDR LDRARTPATKRSFSK
 EVEERSRERPSQPEGLRKAASL TEDRGRDPVKREATLPPVSPPKAALSVDEVEKSKAIIIEEYHLNDMK
 EAVQCQVELASPSLLFIFVRLGIESTLERSTIAREHMGRL LHQLL CAGHLSTAQYYQGLYETLELAEDME
 IDIPHWL YLAELITPILQEDGVPMGELFREITKPLRPMGKATSL LLEILGLLCKSMGPKKVGMLWREAG
 LSWREFLAEGQDVGSFVAEKKVEYTLGESEAPGQRTL AFEELRRQLEKLLKDGGSNQRVFDWIDANLNE
 QQIASNTLVRALMTTVCSAII FETPLRVDVQVLKVRARLLQKYL CDEQKELQALYALQALVVTLEQPAN
 LLRMFFDALYDEDEVVKEDAFYSWESSKDPAEQQGKGVALKSVTAFFNWLREAEDEESDHN

TRTRPLE - GFP Tag - V

Restriction Sites: SgfI-MluI

Cloning Scheme:



Plasmid Map:


ACCN: NM_145941

ORF Size: 4800 bp

OTI Disclaimer: The molecular sequence of this clone aligns with the gene accession number as a point of reference only. However, individual transcript sequences of the same gene can differ through naturally occurring variations (e.g. polymorphisms), each with its own valid existence. This clone is substantially in agreement with the reference, but a complete review of all prevailing variants is recommended prior to use. [More info](#)

OTI Annotation: This clone was engineered to express the complete ORF with an expression tag. Expression varies depending on the nature of the gene.

Components: The ORF clone is ion-exchange column purified and shipped in a 2D barcoded Matrix tube containing 10ug of transfection-ready, dried plasmid DNA (reconstitute with 100 ul of water).

Reconstitution Method:

1. Centrifuge at 5,000xg for 5min.
2. Carefully open the tube and add 100ul of sterile water to dissolve the DNA.
3. Close the tube and incubate for 10 minutes at room temperature.
4. Briefly vortex the tube and then do a quick spin (less than 5000xg) to concentrate the liquid at the bottom.
5. Store the suspended plasmid at -20°C. The DNA is stable for at least one year from date of shipping when stored at -20°C.

RefSeq: [NM_145941.3](#), [NP_666053.2](#)

RefSeq Size: 5481 bp

RefSeq ORF: 4803 bp

Locus ID: 208643

UniProt ID: [Q6NZJ6](#)

Cytogenetics: 16 B1

Gene Summary: This gene encodes a member of the eukaryotic translation initiation factors (eIF) that play important roles in translation initiation by mediating recruitment of additional initiation factors and providing a scaffold for ribosome/mRNA-bridging. Along with eIF4A and eIF4E, the encoded protein forms the eIF4F complex that bridges the 5' UTR with the polyadenylated 3' UTR resulting in mRNA circularization, enhanced translation initiation and mRNA stability. Through its association with eIF3, the encoded protein mediates recruitment of the 43S pre-initiation complex to mRNA. Alternative splicing of this gene results in multiple transcript variants. Pseudogenes for this gene have been identified on chromosomes 2 and 13. [provided by RefSeq, Jan 2015]