

Product datasheet for **MG212043**

Nrxn3 (BC060719) Mouse Tagged ORF Clone

Product data:

Product Type:	Expression Plasmids
Product Name:	Nrxn3 (BC060719) Mouse Tagged ORF Clone
Tag:	TurboGFP
Symbol:	Nrxn3
Synonyms:	6332407J11
Mammalian Cell Selection:	Neomycin
Vector:	pCMV6-AC-GFP (PS100010)
E. coli Selection:	Ampicillin (100 ug/mL)
ORF Nucleotide Sequence:	>MG212043 representing BC060719 Red=Cloning site Blue=ORF Green=Tags(s)

TTTTGTAATACGACTCACTATAGGGCGGCCGGAATTCGTCGACTGGATCCGGTACCGAGGAGATCTGCC
GCC**CGATCGCC**

ATGAGCTTTACCCTCCACTCAGTTTTCTCACCTGAAGGTGAGCATCTTCTGGGCTCCCTGGTGGGGC
TTTGCCTGGGCTGGAGTTCATGGGCCCTCCTAACAGTGGGCCCGCTACCTGCGTTGGGATGCAAGCAC
GCGCAGTGACCTGAGCTCCAGTTCAAGACCAATGTTTCCACTGGGCTGCTCCTGTATTTGGATGATGGT
GGTGTCTGTGACTTCTCTGTCTCTCCCTGGTGGATGGCCGCTTCAGCTCCGCTTAGCATGGACTGTG
CCGAGACCACTGTGCTATCCAACAAGCAGGTGAACGACAGCAGTTGGCACTTCTCATGGTGGAGCCGTGA
TCGTGTGCGCACTGGGCTGGTGATTGATGGTGAAGGCCAGTCTGGAGAGCTACGGCCCCAGCGGCCCTTAT
ATGGATGTGGTCAGTGATTTGTTCTCGGTGGCGTCCCCGCTGACATTCGACCTTCTGCCCTGACCTCG
ATGGAGTACAGAGCATGCCTGGCTTTAAGGGATTAATGCTGGATCTCAAGTATGGCAACTCGAACTCG
GCTTCTGGGGAGCCAGAGCGTCCAGTTAGAAGCAGAGGGACCCTGTGGCGAGCGTCCCTGTGAAAATGGT
GGGATCTGCTTCTCTGGATGGTCATCCACCTGTGACTGTTCTACCACTGGCTATGGTGGCACACTCT
GCTCAGAAGATGTCAGTCAAGTCCAGGCCCTCTCCCATCTATGATGAGTGAACAAGATGTCAGTCAAGG
TCCAGGCCCTCTCCCATCTATGATGAGTGAACAAGCAGCAGAGGAGAACGTGGCCACCTCCGAGGCTCA
GAGTATCTGTGCTATGACCTGTCCAGAACCCATCCAGAGCAGCAGCAGAAATCACCTTTCCCTTTA
AGACCTGGCAACGCAATGGGCTCATCTCCACTGGCAAGTCCGCCGACTATGTTAACCTGGCTCTGAA
GGATGGTGGGCTCTCCTGGTCAATTAACCTGGGTCGGGGCCTTTGAGGCCATTGTGGAGCCAGTGAAT
GGGAAATTCAACGACAACGCCTGGCATGATGTCAAAGTGACACGCAATCTTCGGCAGGTGACAATCTCTG
TGGATGGCATCTAACCAACGGGCTACACTCAAGAGGACTACACCATGCTGGGCTCAGATGACTTCTT
CTATGTTGGTGAAGCCCAAGTACCGCAGACTTCCAGGTTACCTGTGAGCAACAATTCATGGGCTGC
CTTAAAGAGGTTGTTTAAAGAATAATGACATCCGTCTAGAGCTGTCTCGCTTGGCCGGATTGGAGACA
CCAAGATGAAAATCTATGGTGAAGTTGTGTTCAAGTGTGAGAACGTGGCCACACTGGATCCCATCAACTT
TGAGACCCAGAGGCTTACATCAGCTTGCCAAGTGAACACCAACGTATGGGCTCCATTTCTTTGAC



[View online »](#)

TTTCGCACCACTGAGCCCAACGGCCTGATTCTCTTCACTCACGGGAAGCCTCAAGAAAGGAAAGATGTCC
 GGAGCCAAAAGAACAACAAAAGTTGACTTCTTTGCTGTGGAACCTCTTGATGGCAACCTGTATTTGCTGCT
 TGACATGGGCTCTGGCACCATCAAAGTGAAGGCCACTCAGAAGAAGGCCAATGATGGGGAATGGTACCAC
 GTGGATATTACAGCGTGATGGCAGATCAGGTACCATATCTGTGAACAGCAGGCGCACGCCATTCACCGCCA
 GTGGGGAGAGTAAAATTCGACCTGGAGGGGGACATGTATCTGGGCGGGCTGCCAGAGAACCGAGCTGG
 CCTCATCTCCCCACGGAGCTCTGGACCGCCATGCTCAACTACGGTTACGTGGGCTGCATCCGCGACCTG
 TTCATCGATGGGCGCAGCAAGAACATCCGGCAGCTGGCGGAGATGCAGAACCGCAGCAGCGTCAAGTCTT
 CCTGTTACGCATGAGCGCCAAGCAGTGTGACAGCTACCCTGCAAGAACAACCGGTGTGCAAGGACGG
 CTGGAACCGCTTTCATCTGCGACTGCACTGGCACCGGCTACTGGGGGAGAACCTGCGAAAGAGAGGCATCT
 ATCCTGAGCTATGACGGCAGCATGTACATGAAGGTCATCATGCCATGGTGATGCACACGGAGGCAGAGG
 ATGTGTCCTTCCGCTTTCATGTACAGCGAGCCTATGGGCTACTGGTAGCCACAACCTCCAGGGATTCTGC
 AGATACTGCGTCTAGAGTTGGATGGTGGGCGTGTCAAGCTCATGGTTAACTTAGACTGTATCAGGATA
 AACTGTAACCTCCAGCAAAGGACCTGAGACCCTGTATGCAGGGCAGAAGCTCAATGACAATGAGTGGCACA
 CCGTCCGGGTAGTGGGAGAGGAAAAAGCCTTAAGCTAACAGTGGATGATGATGTGGCTGAGGGGACAA
 GGTGGGCGACCACCCCGCTGGAATCCACAATATTGAACTGGTATCATGACTGAGAAGCGTTACATC
 TCTGTGGTCCCCTCCAGTTTCATTGGCCATCTACAGAGCCTCATGTTCAATGGCTTACTGTACATTGATT
 TGTGCAAAAATGGCGACATCGACTACTGTGAAGTGAAGGCTCGCTTTGGACTGAGA AACATCATCGCCGA
 CCCTGTCACTTTTAAGACCAAGAGCAGCTACCTGACCCTCGCCACCCTACAGGCTTACACCTCCATGCAC
 CTCTTCTCCAGTTCAAGACCCTTCAGCTGATGGCTTCACTTCTTCAATAGCGGAGATGGCAATGATT
 TTATTGCAAGTTGAGCTGGTCAAGGGTACATACACTATGTGTTTATCTCGGCAATGGTCCCAATGTGAT
 CAAAGGCAACAGTGACCGCCCCCTGAATGACAACAGTGGCACAACGTGGTATCACCAGGGACAGCAGT
 AACACCCACAGTCTGAAGTGGACCAAGGTAGTCACTCAGGTATCAATGGTCCAAAAATCTGGATT
 TGAAGGTGACCTCTATATGGCTGGCTTAGCCAGGGCATGTACAGCAACCTTCCCAAGCTTGTGGCTC
 CAGGGATGGATTCAGGGCTGCCTGGCCTCTGTGGACTTGAATGGACCGCTGCCTGATCTCATCAACGAT
 GCTCTCCACAGGAGTGGACAGATCGAGCGAGGCTGTGAAGGACCCAGTACAACCTGTCAGGAGGATTCAT
 GCGCCAACCAGGGAGTTTGCATGCAGCAGTGGGAAGGTTTACCTGTGACTGCTCCATGACATCATATTC
 TGGAAACCAGTGAATGACCCTGGTGAACATACATCTTTGGGAAAAGCGGTGGCCTCATCTCTATACC
 TGGCCAGCAAATGACAGACCCAGCACACGCTCTGACCCTCGCCGTGGGCTTCAAGCACTACTGTGAAGG
 ATGGTATCTTAGTACGATTGACAGCGCCCTGGACTTGGCGACTTCTCCAGCTTACATAGAACAAGG
 GAAAAATGGAGTTGTCTTCAATATTGGCACAGTTGACATCTCCATCAAAGAAGAGAGA ACTCTGTCAAT
 GATGGCAAATACCAGTTGTGCGCTTACCAGGAATGGGGGAAATGCTACACTTCAAGTGGACA ACTGGC
 CAGTGAATGAGCACTATCCTACAGGCAACACTGATAATGAACGCCTCAAATGGTAAAACAGAAAATCCC
 CTCAAATATAACCGGCCGTAGAGGAGTGGCTGCAGGAAAAAGGCCGAGCTAACCATCTTCAACACC
 CAGGCGCAAAATAGCCATCGGAGGAAAGGACAAAGGACGCTCTTCCAAGTCAACTCTCTGGGCTTATT
 ATGATGGTTTGAAGTACTGAACATGGCAGCTGAGAACAACCTAATATTAATAATCAATGGAAAGTCCG
 GCTAGTGGGAGAAGTCCCATCAGTCTCAGGAACAACACAGACAACGTCCATGCCACCTGAAATGTCTACC
 ACCGTATGGAACCACCACCACCATGGCTACGACCACCACCCGAAAGAACCCTCTACAGCCAGCATT
 AGCCCACGTGAGATGATCTTGTTCATCTGCTGAATGTTCAAGTATGATGAAGACTTGTGCAATGTGA
 ACCAAGTACAGATAAGAGTCTTCCACTTCAATCTTGAAGTGGCTACAAAGCACATGGCCCAAGTGG
 GAATCCAAGGACTTTAGACCTAACAAAGTCTCGGAAACTAGTAGAACTACAACCCTCTTTGTCCCTG
 AGCTGATCCGCTTACAGCGTCTCCTCGTCTGGGATGGTGCCAAATGCCAGCTGGCAAAATGAATAA
 CCGTGATCTCAAACCCAGCCTGATATAGTCTTGTCTTCCGTTGCCACTGCCTATGAGCTAGACAGCACC
 AAAGTGAAGAGCCACTAATTACTTCCCCATGTTCCGTAATGTGCCACAGCAAACCCACGGAGCCAG
 GAATCAGACGGGTTCCGGGGCCTCAGAGGTGATCCGGGAGTCCAGCAGTACAACAGGGATGGTCTGCGG
 CATTGTGGCTGCTGCCGCCCTCTGCATCTTGATCCTCTGTACGCCATGTACAAGTACAGGAACAGGGAC
 GAGGGTCTATCAAGTGGACGAGACGAGGA ACTACATCAGCAACTCGGCCAGAGCAACGGCACGCTCA
 TGAAGGAGAAGCAAGCCAGCTCCAAGAGCGGCCATAAGAAAACAGAAAACAAGGACAAGGAGTATTATGT
 G

ACGCGTACGCGGCCGCTCGAG - GFP Tag - GTTTAA

Protein Sequence: >MG212043 representing BC060719
 Red=Cloning site Green=Tags(s)

```

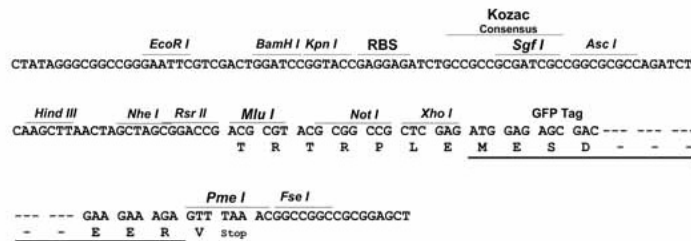
MSFTLHSVFFTLKVSIFLGLSLVGLCLGLEFMGLPNQWARYLRWDASTRSDL SFQFKTNVSTGLLLYLDDG
GVCDFLCLSLVDGRVQLRFSMDCAETTVLSNKQVNDSSWHFLMVSRRVRTGLVIDGEGQSGELRPQRPY
MDVVSDFLFLGGVPADIRPSAL TLDGVQSM PGFKGLMLDLKYGNSEPRLLGSQSVQLEAEGPCGERPCENG
GICFLLDGHPTCDCSTTGYGGTLCSEDVDSQPGLSHLM MSEQDV SQPGLSHLM MSEQAREENVATFRGS
EYLCYDLSQNPIQSSDEITLSFKTWQRNGLILHTGKSADYVNLALKDGAVSLVINL GSGAFEAI VEPVN
GKFNDNAWHDVKVTRNL RQVTISVDGILTTTGYTQEDY TMLGSDDFYVGGSPSTADLP GSPVSNFMGC
LKEVVYKNNDIRLELSRLARIGDTKMKIYGEVVKCENVATLDPINFETPEAYISLPKWNTKRMGSI SFD
FRRTTEPNGLILFTHGKPQERKDVRSQKNTKVDFFAVELLDGNLYLLLDMGSGTIKVKATQK KANDGEWYH
VDIQRDGRSGTISVNSRRTPFTASGESEILDLEGD MYLGGLPENRAGLILPTELWTAMLNYGVGCI RDL
FIDGRSKNIRQLAEMQNAAGVKSSCSRMSAKQCD SYPCKNNAVCKDGWNRFCDC TGTGYWGRTCEREAS
ILSYDGSMMYKVI MPVMHTEAEDVSFRFMSQRAYGLL VATTSRDSADTLRLELDGGRVKLMVNLD CIRI
NCNSSKGPETLYAGQKLNDEWHTRVVRRGKSLKLT VDDDDVAEGTMVGDHTRLEFHNIETGIMTEKRYI
SVVPSSFIGHLQSLMFNGLLYIDLCKNGDIDYCELKARFLRNI IADPVTFKTKSSYLTLATLQAYTSMH
LFFQFKTTSADGFILFNSGDGNDFIAVELVKGYIHYVFDL GNGPNVIKGN SDRPLNDNQWHNVITR DSS
NTHSLKVDTKVVTQVINGAKNLDLKGDLYMAGLAQGMYSNL PKLVASRDGFQGLASVDLNGRLPDLIND
ALHRSGQIERGCEGPSTTCQEDSCANQGVCMQQWEGFT CDCSMTSYSGNQCDNPGATYIFGKSGGLILYT
WPANDRPSTRSRLAVGFSTTVKDGILVRIDSAPGLGDFLQLHIEQGKIGVVFNI GTVDISIKEERTPVN
DGKYHVVRFRTRNGGNATLQVDNWPVNEHYPTGNTDNERLQMVKQKIPFKYNRPV EEWLQEKGRQLTIFNT
QAQIAIGGKDKGRLFQGLSGLYYDGLKVLNMAAENPNIKINGSVRLVGEVPSVSGTTQTTSMPPEMST
TVMETTTTMTATTTTRKNRSTASIQPTSDDLVSSAECSSDDEDFVECEPSTDKSLSTSI FEGGYKAHAPKW
ESKDFRPNKVSETSRTTTTLSPELIRFTASSSGMVPKLPAGKMNNRDLKPQPDIVLLPLPTAYELDST
KLKSP LITSPMFRNVP TANTPEPIRRVPGASEVIRESSSTTGMVVGIVAAAAALCILLI LLYAMYKVRNRD
EGSYQVDETRNYISNSAQSNGLMKEKQASSKSGHKKQKNKDKEYYY
  
```

TRTRPLE - GFP Tag - V

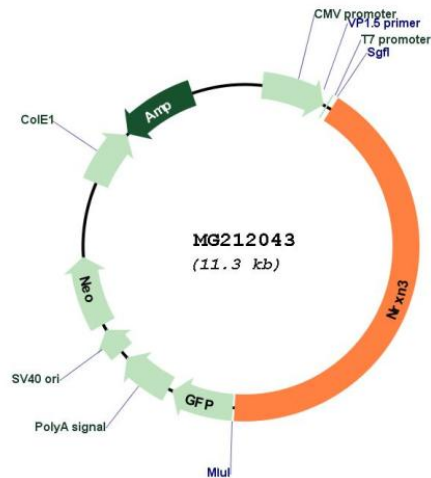
Restriction Sites: SgfI-MluI

Cloning Scheme:

Cloning sites used for ORF Shuttling:



Plasmid Map:



ACCN: BC060719

ORF Size: 4761 bp

OTI Disclaimer: The molecular sequence of this clone aligns with the gene accession number as a point of reference only. However, individual transcript sequences of the same gene can differ through naturally occurring variations (e.g. polymorphisms), each with its own valid existence. This clone is substantially in agreement with the reference, but a complete review of all prevailing variants is recommended prior to use. [More info](#)

OTI Annotation: This clone was engineered to express the complete ORF with an expression tag. Expression varies depending on the nature of the gene.

Components: The ORF clone is ion-exchange column purified and shipped in a 2D barcoded Matrix tube containing 10ug of transfection-ready, dried plasmid DNA (reconstitute with 100 ul of water).

- Reconstitution Method:
1. Centrifuge at 5,000xg for 5min.
 2. Carefully open the tube and add 100ul of sterile water to dissolve the DNA.
 3. Close the tube and incubate for 10 minutes at room temperature.
 4. Briefly vortex the tube and then do a quick spin (less than 5000xg) to concentrate the liquid at the bottom.
 5. Store the suspended plasmid at -20°C. The DNA is stable for at least one year from date of shipping when stored at -20°C.

RefSeq: [BC060719.1](#)

RefSeq Size: 5459 bp

RefSeq ORF: 4763 bp

Locus ID: 18191

Cytogenetics: 12 42.94 cM

Gene Summary: This gene encodes a member of a family of proteins that function in the nervous system as receptors and cell adhesion molecules. Extensive alternative splicing and the use of alternative promoters results in multiple transcript variants for this gene, but the full-length nature of many of these variants has not been determined. Transcripts that initiate from an upstream promoter encode alpha isoforms, which contain epidermal growth factor-like (EGF-like) sequences and laminin G domains. Transcripts initiating from the downstream promoter encode beta isoforms, which lack EGF-like sequences. [provided by RefSeq, Dec 2012]