

## Product datasheet for **MG212038**

### Mast1 (BC054524) Mouse Tagged ORF Clone

#### Product data:

Product Type:	Expression Plasmids
Product Name:	Mast1 (BC054524) Mouse Tagged ORF Clone
Tag:	TurboGFP
Symbol:	Mast1
Synonyms:	SAST, SAST170
Mammalian Cell Selection:	Neomycin
Vector:	pCMV6-AC-GFP (PS100010)
E. coli Selection:	Ampicillin (100 ug/mL)
ORF Nucleotide Sequence:	>MG212038 representing BC054524 Red=Cloning site Blue=ORF Green=Tags(s)

TTTTGTAATACGACTCACTATAGGGCGGCCGGAATTCGTCGACTGGATCCGGTACCGAGGAGATCTGCC  
GCC**CGATCGCC**

ATGTCGACTCTCTGGACCGCTTTCCAATTTCTCGATGCCCTCCTCCCGCGGCAGCATGTTTC  
GCCGCACCAAGAGTTGCCGTACCAGCAACCGGAAAAGCCTCATCCTGACAAGCACTTCTCCGACTTACC  
GCGACCCCACTCCCGCTGCCGGCCACTTAGGTAGCAGTCTTTGGACAGCCCCGCAACTTCTCTCC  
AACACTCCGCCCCTTCTCGTTTCTTCCGAAGGGCGGATGGACCGCGATGGTGGCTTGGCTCGC  
TCCCTTCTCTGGCTATGGCACAACACGCCAGCTCACTGTTTCATCCTCCTGCTCCTCCAGGAGCG  
CCTGCATCAACTACCGTACCAGCCACCGTGGACGAGCTGCACTTCTGTCCAAACACTTCGGCAGCACC  
GAGAGCATCACCGACGAGGATGGTGGCCCGCTCTCCCGCGTGGCTCCTCGCTCTCGCAGCCTCAGCC  
CCGGCCGCTCCCTCCTCTACGACAACGAAATTGTGATGATGAACCATGTGTACAAGGAGCGGTTCCC  
AAAGGCCACTGCACAGATGGAAGAGAAGCTGCGGGACTTCGCCCGCGCCTATGAACCTGACAGCGTGCTG  
CCGCTGGCCGACGGCGTCTCAGCTTATCCACCATCAGATCATTGAACCTGGCCGAGACTGCCTTACCA  
AGTCCCGCATGGGCTCATCACCGGTCTATTTCTATGAACTGCAGGAAAACCTAGAGAAGCTGCTGCA  
GGACGCTTATGAACGCTCGGAGAGCTTGGAGGTAGCCTTTGTCACTCAGCTGGTGAAGAACTTCTCATA  
ATCATCTCTGCCCTGCAAGCTTCTGGAGTGCCTGGAATTCAACCCAGAAGATTCTACCACCTTCTGG  
AGGCAGCCGAGGACATGCCAAGGAGGGCCACCTGGTCAAAACTGACATCCCCGATACATCATCCGACA  
GCTGGGCCTCACTCGGGACCCCTTCCAGATGTGGTGGCCTGGAGGAGCAGGACAGCGGGGCTCCAAC  
ACTCCGGAGCAAGACGACACATCTGAGGTCGACGAGCAGCCTCAAGGCCAAGAAAACCTCCCGTGAAA  
GTGACTTTGACACTATCAAGCTCATTAGCAATGGTGCCTACGGAGCCGTCTACCTGGTGGCAGCCGGGA  
CACGAGGACGCGCTTCGCATGAAGAAGATCAACAAACAGAACCTGATCCTGCGCAACCAGATCCAGCAG  
GCGTTTGTGGAGCGGACATCCTCACGTTTGCAGAGAACCATTGTGGTGGTGGTGGTGGTGGTGGTGGT  
AGACCCGGCCACCTTTCATGGTTCATGGAGTATGTGGAAGGTGGTGGTGGTGGTGGTGGTGGTGGTGGT  
CATTGGGGCACTGCTGTGGAGATGGCGGAATGTATTTGCAGAAACAGTTCTAGCCCTTGAGTACTTA



CACAATTATGGCATCGTGACCCTGACCTCAAGCCAGACAACCTCCTCATTACTTCCATGGGCCACATCA  
 AGCTCACGGATTTTGGCCTCTCCAAGATGGGACTCATGAGCCTGACCACCACTTATATGAGGGGCACAT  
 TGAGAAGGATGCCCGGGAGTTCTCGGACAAACAGGTGTGTGGGACCCAGAGTACATCGCACCCGAGGTC  
 ATCCTGCGCCAGGGCTACGGCAAGCCAGTGGACTGGTGGGCTATGGGGATCATTCTACGAGTTCTGG  
 TGGGCTGTGTGCCTTTCTCGGGATACCCAGAAGAGCTCTTTGGACAGGTATCAGCGATGACATACT  
 GTGGCTGAAGGGGACGAGGCCCTGCCACAGATGCACAGCTTCTAATATCTAGCCTCTTGACAGACCAAC  
 CCCCTGGTCCGGCTTGGGACAGGTGGTGGCTTTGAGGTGAAGCAGCATAGTTTCTCCGAGACCTGGACT  
 GGACAGGGCTACTGCGGCAAGAGCGGAGTTCATCCCCACCTAGAGTCAGAAGATGACACCAGCTACTT  
 TGACACCCGCTCCGACAGGTATCACCATGTGAACTCCTATGATGAGGACGACACCACCGAAGAGGAGCCC  
 GTGGAGATCCGCCAATTCTCCTCCTGCTCGCCGCTTACGAAAGGTGTACAGCAGTATGGAGCAGTGT  
 CTCAGCAGGAGCCTAAGACCCCGTCTCAGCATCTGGGGCCAGCAAGCGGGACCAAGCGCTAAGGGCCC  
 GGAGGAGAAAGTGGCCGCAAGAGGGAGGGACTGGGTGGCCTGACTCTGCGTGAGAAGACCTGGAGAGGG  
 GGCTCTCCAGAGATTAAGCGCTTCTCAGCGTCTGAAGCCAGTTTTCTGGAAGGAGAGGCCAGTCCCCGC  
 TGGGAGCGCGCAGACGTTTCTCAGCACTGCTGGAGCCAGCCGTTCACTGCCCCCAAGAGGATGAAGA  
 TGAGGCTCGACTCCGACAGCTCCTCGACCCAGCTCCGATCCCCCTAGCTCACTGGACACACGCGTCCCC  
 AAAGAGGCAGTTCAAGGAGAGGGCAGCTCCACCCCGGGGAACCCGAGGCCACTGAGCGCTCACATCCAG  
 GTGACCTCGGCCACCCTCCAAGGATGGAGACCATCAGGCCCTAGGGCCACCAACGACCTGGTTTTGCG  
 AAGGGCAAGCCAGCAGCTGTCTGGGATCTTGTGTGGAGAAGCGACCGTCTCGAACTGGGGGCAAA  
 GTTATCAAGTCGGCTTACGCTACAGCCTTGTGAGTGTGATTCTGCACTGGACCCACATGGAGGCTCAC  
 CCCTGGCTAGTCCCATGTCCCCTCGATCTCTCCTCCAATCCATCCTCACGGGACTCTTCGCTAGCCG  
 AGACTACTCACCAGCTGTGAGTGGACTCCGTTCCCCATCACCATCCAACGCTCAGGCAAGAAATATGGG  
 TTCACACTGCGAGCCATCCGTGTCTACATGGGCGACTCCGATGTCTACAGTGTCCACCACATTGTTGGC  
 ACGTGGAGGAAGGAGGCCAGCCCAAGAGCAGGGCTCTGTGCTGGGGACCTCATCACTACGTAATGG  
 TGAGCCCGTGCATGGTATGGTGCATCCTGAGGTGGTAGAGCTGATCCTGAAGAGTGGCAACAAGTGTAGT  
 GTGACCACCACACCCCTTTGAAAACACTTCCATCCGGATTGGGCTGCCAGGCGCAGCAGTTACAAGCCA  
 AAATGGCCGAAGGAACAAAAGGCTTTCGGCAAAAGACGGCCAGGAGAGCAAGAAGCGGAGCTCTCTCTT  
 TCGGAAGATCACAAAGCAGTCGAACCTGCTGCACACCAGTCGATCGCTGTCTTTGAACCGGTCTTG  
 TCGTCCAGCGACAGTCTTCGGGCTCGCCACGCACGGACTACCCGCACGCTCGCCACACATAGCTATC  
 GCTCTACACCTGACTCCGCTACTTAGGCGCTCGTACAGAGTAGCTCGCCAGCTTCCAGCAGCCCTAA  
 TCCCCCGCTCATCCGCTCGCACCACATCAGGCCAGCACCTTGACGGGCTGTACCCGAACTACAC  
 CGCCAGTACCGCTCAGCGCGCTGTAATCGGCTGGCAACATCCCCTGTACCTTAGCGCACACACCAT  
 CCCCAGCGAGGCGTCCGCGCCGCGCTGCCAGGCCACACGGTGGGACAGTACATACCACGAGAGCTT  
 CCCTGCCAAACTACACTCATCGCCACCTGTGTCGCGCCCGGCCCAAAAGTGCAGAGCCACCACGCTCG  
 CCGTTGCTCAAGCGCGTGCAGTCAGCGGAGAACTAGGGGCTTCGCTGGGAGCAGACAAGAAGGGCGCAC  
 TGCGCAACACAGCCTGGAAGTGGGACACCCTGATTTCCGAAAGGACTTCCATGGTGAAGTGGCCCTGCA  
 TAGCCTCGCTGAGTCTGATGGTGAAGCGCTCCTATTGAGGGTCTGGGGCAGCCGGCAGGTCCGCGTG  
 CGACGCTGGGTGCGCAGGAATCACCCCTAAGCTTGGGCGCGGACCCGTTGCTACCCGATGGTGTCCAGA  
 CCCTATGGCGTCAAGCAAGGAGGATTCGCGGGAGGTACAGAGGCTTGCACCCACCTCGCGGACAAC  
 CCTGGGAGCCGACCCCTGGAGCGTGAATCGGGTTGCACAAGGCACCAGAGCGTGCAGACTGAGGATGGC  
 CCAGGTGGGGTGGCCAGGGCCCTGGCAAGGCAGCGCTAAGTCCAGTGCAGGAACATGAGACAGGGCCGGC  
 GCAGTAGCTCTGGTGAAGCAGGCACACCCCGGTGCCATTGTTGTAGAGCTGCTCGGCCAGGGTCAA  
 GACCCAGGCACCCAGCCTCTGGGCACAGACTCCAAGGGATTGAAGGAACCTGTAGCCAGATGCCTCTG  
 ATGCTGATGCCCAAGGGGAGGGAGCGCTGGGTGCTAGAGGAGGTGGAAGAGCGGACCACGCTAAGCG  
 GACTTCGCTTAAGCCCGCTCCCCAACTCTCTCCTGACCCCAAGACTCCAACCTAGTCCCAACAAA  
 GAATGTACCCCGCAGTGCAGCTCCTTCACTCCACCTGCTTCCCTCATGGTCCAGGCACCAAGCCTGAA  
 GCAGGGTTGAACCTCCGCTGCTGCTGAAGCTGTGACTCCTGCAGGCCCTACCAAACTGGGGCACCTA  
 GCCTGCATCTTAGGTCCA

AGCGGACCGACGCGTACGCGGCCGCTCGAG - GFP Tag - GTTTAA

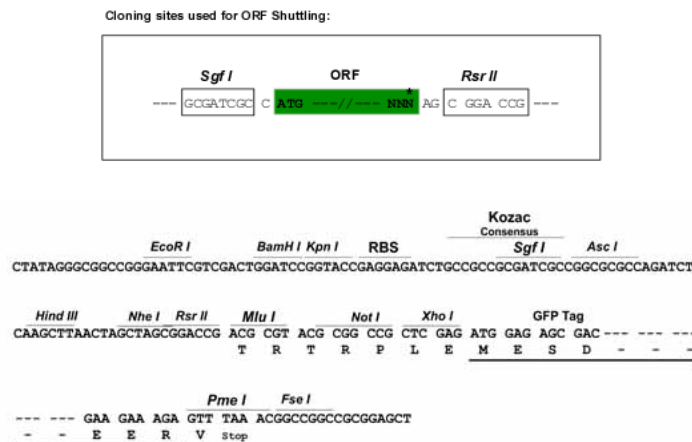
**Protein Sequence:** >MG212038 representing BC054524  
 Red=Cloning site Green=Tags(s)

MSDSLWTALSNFSMPSPGGSMFRRTKSCRTSNRKSILITSTSPTLPRPHSPLPGHLGSSPLDSPRNFSP  
 NTPAHFSFASSRRADGRRWLSLSPSSGYGTNTPSSTVSSSCSSQERLHQLPYQPTVDELHFLSKHFGST  
 ESITDDEGGRRSPAVRPRSRSLSPGRSPSSYDNEIVMMNHVYKERFPKATAQMEEKLRDFARAYEPDSVL  
 PLADGVLFSFIHHQIIEIARDCLTKSRDGLITTVYFYELQENLEKLLQDAYERSESELEVAFTQLVKLLLI  
 IISRPARLLECLEFNPEEFYHLLAAEGHAKGHLVKTDIPRYIIRQLGLTRDPFPDVVRLLEEQDSGGSN  
 TPEQDDTSEGRSSTSKAKKPPGESDFDTIKLISNGAYGAVYLVRHRDTRQRFAMKKINKQNLILRNQIQQ  
 AFVERDILTFAENPFVVGMFCSFETRRLCMVMEYVEGGDCATLLKNIGALPVEMARMYFAETVLALEYL  
 HNYGIVHRDLKPDNLLITSMGHIKLTDGFLSKMGLMSLTNLYEGHIEKDAREFLDKQVCGTPEYIAPEV  
 ILRQGYGKPVDDWAMGIIIEYFLVGCVPFFGDTPEELFGQVISEDILWPEGDEALPTDAQLLISLLQTN  
 PLVRLGAGGAFVQHSFFRDLDWTGLLRQKAEFIPHLESDDTSYFDTRSDRYHHVNSYDEDDTTEEEP  
 VEIRQFSSCSPRFKVVYSMEQLSQHEPKTPVSASGASKRDPKAKGPEEKVAGKREGLGGLTLREKTWRG  
 GSPEIKRFSASEASFLGEASPLGARRRFALLEPSRF TAPQEDEDEARLRPRPRSSDPPSSLDTRVP  
 KEAVQGEGETSTPGEPEATERSHPGDLGPPSKDGDPSGPRATNDLVLRRARHQQLSGDLAVEKRPSRTGGK  
 VIKSASATALSVMIPAVDPHGGSPLASPMSPRSLSSNPSSRDSSPSRDYSPAVSGLRSPITIQRSKKYK  
 FTLRAIRVYMGSDVYSVHHIVWHVEEGPAQEAGLCAGDLITHVNGEPVHGMVHPEVVELILKSGNKVA  
 VTTTFFENTSIRIGPARRSSYKAKMARRNKRPSAKDGQESKKRSSLFRKITKQSNLLHTSRSLSSLNRS  
 SSSDSLPGSPTHGLPARSPTHSYRSTPDSAYLGASSQSSPASSTPNPASSASHHIRPSTLHGLSPKLH  
 RQYRSARCKSAGNIPLSPLAHTPSPTQASPPPLPGHTVGSSTTQSFPAKLHSSPPVVRPRPKSAEPPRS  
 PLLKRVQSAEKL GASLGADKKGALRKHSLEVGHDPDFRKFHGLALHSLAESDGETPIEGPGATRQVAV  
 RRLGRQESPLSLGADPLLDPGVQRPMASSKEDSAGGTEACTPPRATTPGSRTLERSGCTRHSVQTEDG  
 PGGVARALAKAALSPVQEHETGRRSSGEAGTPVPIVVEPARPGVKTQAPQLGTDSKGLKEPVAQMPL  
 MPDAPRGRERWLEEEVEERTTSLGLRSKPASPPLSPDPQTPTLVPTKNVPRSAAPSVPPASLMVPGTKPE  
 AGLNSRCPAEAVTPAGLTKTGAPSPASLGP

SGPTRRRLE - GFP Tag - V

**Restriction Sites:** SgfI-RsrII

**Cloning Scheme:**

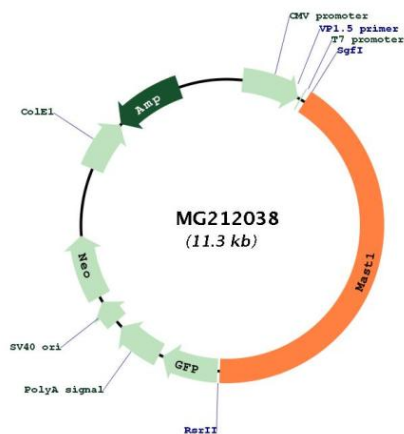


**ACCN:** BC054524

**ORF Size:** 4712 bp

<b>OTI Disclaimer:</b>	The molecular sequence of this clone aligns with the gene accession number as a point of reference only. However, individual transcript sequences of the same gene can differ through naturally occurring variations (e.g. polymorphisms), each with its own valid existence. This clone is substantially in agreement with the reference, but a complete review of all prevailing variants is recommended prior to use. <a href="#">More info</a>
<b>OTI Annotation:</b>	This clone was engineered to express the complete ORF with an expression tag. Expression varies depending on the nature of the gene.
<b>Components:</b>	The ORF clone is ion-exchange column purified and shipped in a 2D barcoded Matrix tube containing 10ug of transfection-ready, dried plasmid DNA (reconstitute with 100 ul of water).
<b>Reconstitution Method:</b>	<ol style="list-style-type: none"> <li>1. Centrifuge at 5,000xg for 5min.</li> <li>2. Carefully open the tube and add 100ul of sterile water to dissolve the DNA.</li> <li>3. Close the tube and incubate for 10 minutes at room temperature.</li> <li>4. Briefly vortex the tube and then do a quick spin (less than 5000xg) to concentrate the liquid at the bottom.</li> <li>5. Store the suspended plasmid at -20°C. The DNA is stable for at least one year from date of shipping when stored at -20°C.</li> </ol>
<b>RefSeq:</b>	<a href="#">BC054524</a> , <a href="#">AAH54524</a>
<b>RefSeq Size:</b>	4894 bp
<b>RefSeq ORF:</b>	4712 bp
<b>Locus ID:</b>	56527
<b>Cytogenetics:</b>	8 41.32 cM
<b>Gene Summary:</b>	Appears to link the dystrophin/utrophin network with microtubule filaments via the syntrophins. Phosphorylation of DMD or UTRN may modulate their affinities for associated proteins.[UniProtKB/Swiss-Prot Function]

### Product images:



Circular map for MG212038