

Product datasheet for **MG212036**

Madd (NM_145527) Mouse Tagged ORF Clone

Product data:

Product Type:	Expression Plasmids
Product Name:	Madd (NM_145527) Mouse Tagged ORF Clone
Tag:	TurboGFP
Symbol:	Madd
Synonyms:	9630059K23Rik; IG20
Mammalian Cell Selection:	Neomycin
Vector:	pCMV6-AC-GFP (PS100010)
E. coli Selection:	Ampicillin (100 ug/mL)
ORF Nucleotide Sequence:	>MG212036 representing NM_145527 Red=Cloning site Blue=ORF Green=Tags(s)

TTTTGTAATACGACTCACTATAGGGCGGCCGGAATTCGTCGACTGGATCCGGTACCGAGGAGATCTGCC
GCC**CGATCGCC**

ATGGTGCAAAGAAGTTCTGCCCTCGTTACTTGACTATCTCGTGATCGTAGGGGCGAGGCACCCAAGCA
GTGACAGTGTGGCTCAGACTCCTGAGCTGCTGCGGAGGTACCCACTAGAGGATCACCCAGAGTTCCTCCCT
GCCCCAGATGTGGTGTCTTCTGCCAGCCAGAAGGATGTCTGAGTGTGCGGCAGCGCGGATGAGCCTT
CGGGACGATAACCTTTTTGTCTTACCCTAACCATAAGGACACCGGAGTCAACCCGATGATGATCTGTG
TCAACTTCTACCGTTCCCTCCAAAAGCGAATGCCAAAAGGAAAAGGTGGAAGGCGGAGCAGGACCCCGTGG
GAAGGAAGGCGCTCACACCTCTGGTGCCTCAGAAGAGGCTGCCGCTGGGAGCTCAGAGAGTGGCTCAACC
TTGCAGCCGCTAGTGCTGACTCCTGACTGCTAAACCAAGTCTCCTCGGGCAAACGTAGGGCAAAG
CGGGCAGCCGCTCCCGCAACAGTACCCTGACATCCCTGTGTGTGCTTAGCCACTACCTTTCTTCTCTAC
CTTCAGAGAGTGTCTGTATACTCTCAAACGTTTGGTAGACTGCTGTAGTGAACGGCTGCTAGGCAAGAAA
CTGGGCATCCCTCGAGGTGTACAAAGGGACACCATGTGGCGAATCTTTACTGGATCACTGCTAGTGGAGG
AGAAGTCCAGTCCCTTCTGCAAGACCTTCGAGAGATTGAGGCCTGGATCTATCGGTTGCTACGTTCCCC
AGTGCTGTCTCTGGGCAGAAGCGAGTGGACATTGAGGTCCTGCCCGAGGAATCCAGCAGGCCCTGACA
TTTGCTCTCCAGATCCATCTCGATTACCCTAGTAGATTTCCCTCTTCCCTTCCCTTGGAACTTCTGG
GTGTAGATGCTTGTCTTCAAGTGCTAACCTGCATCCTGTTGGAGCACAAAGGTGGTGTGCTGAGTCTGAGA
CTACAATGCACTCTCCATGTCTGTGATGGCGTTCTGGCAATGATCTACCCCTGGAGTACATGTTCCCG
GTCATCCCGCTGCTTCCACCTGCATGGCCTCGGCAGAGCAGCTACTCTTGGCTCCAACCCCATACATCA
TTGGAGTCTCGCCAGCTTCTTCTCTACAAGCTAGATTTCAAATGCCCGATGACGTGTGGCTAGTGGAA
TCTGGACAGCAATAGGGTATTGCCCAATGCAGAAGTGTACCCATCCTGCCAGAACAGAAATCA
TTAGAGCTGAAAAACACTTAAAGCAGGCTTAGCCAGCATGAGTCTCAACACCCAGCCATTCTTAACC
TGGAGAAATCCACGAGGCCAGGAGATCCCGCTTCTCTTGGGAAGGCCATTAATGACCTTCAGTCCAC
ACCTTCCACTGAATCAACCCGCTCATTATGGCAATGATGTAGATTGAGTGCAGCTTGAACGAGAGTG



[View online >](#)

GCCATGGTACGTTTCTTCAACTCTGCTAACGTGCTGCAGGGCTTTCAGATGCACACACGTACCCTGCGAC
TCTTCCCCGGCCTGTGGTAGCTTTCGAAGCTGGCTCCTTTCTGGCCTCACGTCCCCGGCAGACTCCCTT
TGCTGAGAAAAGTGGCCAGGACCCAAGCTGTGGAGTATTTTGGAGAATGGATCCTGAACCTTCTAACTAT
GCCTTCCAGCGGATTACAACAATACGTTTGTATCCGGCCCTTATTGGTGACAAGCCAAAGTGGTACGCTC
ACCAGCTGCAGCCATCCATTATCGAGTCTATGATGGCAACTCTCAGCTGGCCGAGGCCCTGAGTGTGCC
CCCGGAGCGGATTCTGACTCCGACCCGACGGAGGACAGTGGCAGTGTAGTCAAGATTATGATGACTCA
AGCTCTTCTTACTCCTCCCTGGGGACTTTGTCACTGAAATGATGAAATGTGACATCAATGGAGACACTC
CCAATGTGGATCCTCTGACCCATGCAGCCCTGGGAGATGCCAGTGAAGTGGAGATTGACGAGCTGCAGCC
CCAGAAGGAGGGAGAGGAACCCGGCCAGACAGTGAAGTCTCAGGAAAACCTCCGCTGCGCTCCAGC
TCCAGCACACGGCCAGCAGCAGCCAGCACCCTTGTCCACAGTGGCCACTCTGAAGTCTGACTCTA
CAGAGATGGGAGATAAGGCCACAGCAGGCATCTCCAAGCCCTCCCTCCCGTGCCTCCAGCATTGCAA
ATCTACTGTGGACAGGAGACAGACAGAGACTGGAGAGGGTCACTGTGCCAGCGAACCTATGACAATCCA
TACTTCGAGCCCCAGTATGGCTTCCCCCGAGGAAGTGAAGGAGGAGCAGGGGGAGAGCTACACTCCCC
GGTTCAGCCAGCATGTCAGTGGCAGTGGGCTCAAAGCTGCTGCGGCCAACAGCTTGAAGCTGGCAAG
TGACTCAGACGCAGAGTCAAGTCTGAGAGCAAGCTCTCCAACCTCACTGTCTTAACAACAGCACCGAG
GGCTTCGGGGGCATCATGTCTTTGCTAGCAGCCTGTATCGGAACCATAGTACAAGCTTCACTCTTCAA
ACCTCACACTGCCACCAAAGGTGCCCGGAGAGACGACACCATTCCCCAGCCTGAAAGGAAATAGGAG
GGCCTTAGTGGACCAGAAGTCACTGTCTTAAACACAGCCCAACCGTGAAGGAGAACCTTCAATCCCCA
CAGGGCCGGTCCGAGCAACTCTAGCGAGAACCAGCAGTTCCTGAAGGAAGTAGTCCATAGTGTGCTGGACG
GCCAGGGAGTGGGCTGGCTCAATATGAAGAAGTACGCCGGCTCCTGGAGAGTGAAGCAGCTTAGAGTCTT
TGACTGAGCAAGCTGAATCGCGCAGTGCAGTCAAGGATGACGCCCGCAGGATGTATCCAAGACGTG
GAGATCAGCCGGAAGGTGTACAAGGGATGCTAGACCTCCTCAAGTGCACAGTCCCTCGACCTCGAGCAGT
CCTATGCCACGCAGTCTGGTGGTATGGCCAGCATCTTTGGGCTTTTGGAGATTGCCAGACCCACTA
CTATAGTAAAGAACCAGACAAAACGGAAGAGAAGTCCGACAGAGAATGTAATACCCAGTTGGCAAGGAT
CCTGGTCTGGCTGGGCGGGGGACCCAAAGCAATGGCCAGCTAAGGGTCCCTCAACTGGGCCCTCGGG
CACCAAGTGTACAGGAAAGGTCTAAAGAAGTGGATACCAGAAGTTTAAAGGAGAGAATTTGTAGC
ATCTGTTGAATTTGGAAACAAGCACCAGGAAGTAAAAAGCAAAAGGCTTTGGAAAAACAGAGGCCAGAG
GGCATCAAGCCTGTCTTTGACCTGGGTGAGACAGAGGAGAAAAAGTCCCAGATGAGCGCAGACAGTGGT
TGAGCCTGACATCTGCCCTCCAGAGGACTGATCAAGACTCTGTCATCGGTGTGAGTCCAGCTGTTATGAT
CCGAAGCTCAAGTCAAGTCTGAAGTTCAGCCGTGGTGAATAGTCCGGAGAGACCTTGGAGCT
GACAGTCACTGAGCAGCAATGCAGGTGACGGCCAGGAGGCGAAGGCAGCGCCACCTGGCAAGTCCC
GGCCACTCTGTCCGACAGTGAATCGAAACCAATTCTGTCTACAAGCGCCATCTTTGGTAAAGCCCATAG
CTTGAAGCCAAAGGAGAAGCCGGCTGGTAGTCCGATTCTTCCGAAGACGTAAGCCAGCGAGTCTAT
CTCTATGAGGGACTGCTAGGAAGGGACAAAGGATCCATGTGGGACCAGCTAGAGGATGCCGCTATGGAGA
CCTTTTCTCTGAGCAAAGAAGCTTCTACCTTATGGGACCAAAATGCAGTTCCTGGGAAGATGCATTCTAGA
TGCTGTAATGTTGGAAAGAGAAGGAATGGGTATGGACCAGGGTCTCAGGAAATGATCGACAGGTACCTC
TCCCTAGGGGAACACGACCGGAAGCGCTGGAGGATGATGAAGACCGCTTGTGGCCACACTTTTACACA
ACCTCATATCCTATATGCTGCTGATGAAGTGAACAAGAATGACATCAGGAAGAAAGTACGGCGCCTAAT
GGGAAAGTCCCACATTGGGCTGGTGTACAGCCAGCAAGTCAATGAGGTGCTCGATCAGTGAACAGCCTG
AATGGACGTGATCTCTCCATCCGGTCCAGCGGACGCCGACATGAAGAAGCAGACTTTTGTGTGATG
CAGGGACGGACACAAATGGAGACATCTTTTTCATGGAAGTGTGTGATGACTGCGTGGTGTGCGTAGTAA
CATTGGGACGGTGTACGAGCGCTGGTGGTATGAGAAGCTCATCAATATGACCTACTGTCCCAAGACCAAG
GTCCTGTGCTTATGGCGGAGAAATGGCTCTGAGACCCAGCTCAACAAGTCTATAACCAAGAAGTGTGAG
AGCTGTACTACTGTGTAAGGACAGCATGGAACGTGCTGCTGCCGACAGCAAAGCATCAAACCTGGGCC
TGAGCTAGGCGGTGAGTTCCTGTGCAGGACATGAAGACTGGAGAGGGTGGCTTGTCTCAAGTCAACCTG
GAAGGGATCAATCTCAAGTTCATGCACAACCAGTTCCTGAAATTAAGAAGTGG

ACGCGTACGCGGCCGCTCGAG - GFP Tag - GTTTAA

Protein Sequence: >MG212036 representing NM_145527
 Red=Cloning site Green=Tags(s)

```

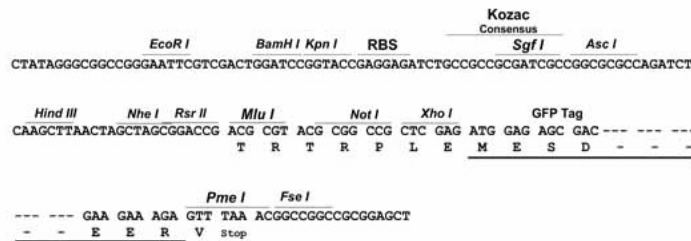
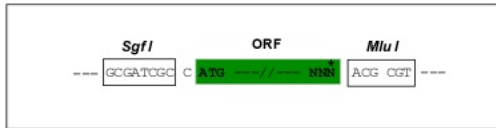
MVQKKFCPRLLDYLIVIGARHPSSDSVAQTPPELLRRYPLEDHPEFPLPPDVVFFCQPEGCLSVRQRMSL
RDDTSFVFTLTDKDTGVTRYGICVNFYRSFQKRMPEKEVEGGAGPRGKEGAHTSGASEEAAAGSSESGST
LQPPSADSTPDVNQSPRGKRRKAGSRSRNSTLTSCLVLSHYPPFFSTFRECLYTLKRLVDCSERLLGKK
LGIPRGVQRDTMWRIFTGSLLEVEKSSALLQDLREIEAWIYRLLRSPVPSGQKRVDIEVLPQELQALAT
FALPDPSPRFTLVDFPLHLPELELLGVDAQLQVLTCLLEHKVVLQSRDYNALSMSVMAFVAMIYPLEYMF
VIPLLPCTMASAEQLLLAPTPIIGVPASFLLYKLDKMPDDVWLVLDLSNRVIAPTNAEVLPIPEPES
LELKKHLKQALASMSLNTQPIILNLEKFHEGQEIPLLLGRPSNDLQSTPSTEFNPLIYGNVDVSDVATRV
AMVRFNNSANVLQGFQMHRTLRFP RPVVAFAQGSFLASRPRQTPFAEKLARTQAVEYFGEWILNPSNY
AFQRIHNNTFDPALIGDKPKWYAHQLQPIHYRVYDGNSQLAEALSVPPERDSDSDPTEDSGSDSQDYDDS
SSSYSSLGDFVSEMMKCDINGDTPNVDPLTHAALGDASEVEIDELQPQKEGEEGPDSENSQENPLRSS
SSTTASSPSTVVHSAHSEAADSTEMGDKATAGISKPLPPVPSICKSTVDRRQTETGEGSVCQRTYDNP
YFEPQYGFPEEEDDEEQGESYTPRF SQHVS GSRAQKLLRPNSLKLASDSDAESDRASSPNSTVSNNSTE
FGGIMSFASSLYRNHSTFSLSNLTLPTKGAREKTPFP SLKGNRRALVDQKSSVIKHSPVTKREPSSP
QGRSSNSSENQQLKEVHVSVDGQGVGWLNMKVRRLLESEQLRVFVLSKLNRAVQSEDDARQDVIQDV
EISRKYVYKMLDLLKCTVLSLEQSYAHAGLGGMASIFGLLEIAQTHYYSKEPDKRKRSPTEENVTPVGKD
PGLAGRDPKAMAQLRVPQLGPRAPSATGKGPKELDTRSLKEENFVASVELWNKHQEVKKQKALEKORPE
GIKPVFDLGETEEKKSQMSADSGVSLTSASQRTDQDSVIGVSPAVMIRSSSQDSEVSTVVSNSSETLGA
DSDLSSNAGDGPGGEGSAHLASSRATLSDSEIETNSATSAIFGKAHSLKPKKEKAGSPIRSEDVSQRVY
LYEGLLRDKGSMWDQLEDAAMETFSLSKERSTLWDQMFWEDAFLDVMLEREGMGMDQGPQEMIDRYL
SLGEHDRKRLLEDDEDRLLATLLHNLISYMLLMKVNKNDIRKKVRRLMGKSHIGLVYSQVNEVLDQLNSL
NGRDLSIRSSGSRHMKKQTFVHVHAGTDITNGDIFFMVEVCDDCVLRSNIGTVYERWWYEKLINMTYCPKTK
VLCWRNGSETQLNKFYTKKRELYYCVKDSMERAAARQSIKPGPELGGFVPVQDMKTGEGGLLQVTL
EGINLKFMHNQFLKLLKKW
    
```

TRTRPLE - GFP Tag - V

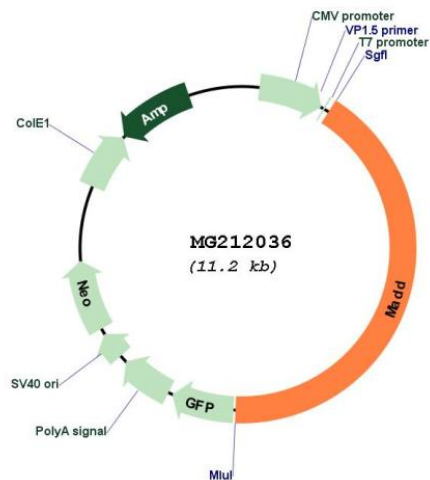
Restriction Sites: SgfI-MluI

Cloning Scheme:

Cloning sites used for ORF Shuttling:



Plasmid Map:



ACCN: NM_145527

ORF Size: 4674 bp

OTI Disclaimer: The molecular sequence of this clone aligns with the gene accession number as a point of reference only. However, individual transcript sequences of the same gene can differ through naturally occurring variations (e.g. polymorphisms), each with its own valid existence. This clone is substantially in agreement with the reference, but a complete review of all prevailing variants is recommended prior to use. [More info](#)

OTI Annotation: This clone was engineered to express the complete ORF with an expression tag. Expression varies depending on the nature of the gene.

Components: The ORF clone is ion-exchange column purified and shipped in a 2D barcoded Matrix tube containing 10ug of transfection-ready, dried plasmid DNA (reconstitute with 100 ul of water).

Reconstitution Method:

1. Centrifuge at 5,000xg for 5min.
2. Carefully open the tube and add 100ul of sterile water to dissolve the DNA.
3. Close the tube and incubate for 10 minutes at room temperature.
4. Briefly vortex the tube and then do a quick spin (less than 5000xg) to concentrate the liquid at the bottom.
5. Store the suspended plasmid at -20°C. The DNA is stable for at least one year from date of shipping when stored at -20°C.

RefSeq: [NM_145527.4](#), [NP_663502.3](#)

RefSeq Size: 6094 bp

RefSeq ORF: 4677 bp

Locus ID: 228355

UniProt ID: [Q80U28](#)

Cytogenetics: 2 E1

Gene Summary: Plays a significant role in regulating cell proliferation, survival and death through alternative mRNA splicing. Converts GDP-bound inactive form of RAB3A, RAB3C and RAB3D to the GTP-bound active forms. Component of the TNFRSF1A signaling complex: MADD links TNFRSF1A with MAP kinase activation. Plays an important regulatory role in physiological cell death (TNF-alpha-induced, caspase-mediated apoptosis).[UniProtKB/Swiss-Prot Function]