

Product datasheet for **MG212034**

Slx4 (NM_177472) Mouse Tagged ORF Clone

Product data:

Product Type:	Expression Plasmids
Product Name:	Slx4 (NM_177472) Mouse Tagged ORF Clone
Tag:	TurboGFP
Symbol:	Slx4
Synonyms:	AI256635; AI426760; Btbd12; D16Bwg1016e
Mammalian Cell Selection:	Neomycin
Vector:	pCMV6-AC-GFP (PS100010)
E. coli Selection:	Ampicillin (100 ug/mL)
ORF Nucleotide Sequence:	>MG212034 representing NM_177472 Red=Cloning site Blue=ORF Green=Tags(s)

TTTTGTAATACGACTCACTATAGGGCGCCGGGAATTCGTCGACTGGATCCGGTACCGAGGAGATCTGCC
GCC**CGATCGCC**

ATGTTCCAGAGAGTGTCCCAATGGCAACTCCCAGCCTCTTCCTTCTGTTTCACGACAACTGGTGTAC
CAAGTCCCTCAAACCCAGAGTCTCAGAGCTGGTTCTGCAACGGATGAAGCAGTTCAAGAGAGCAGACCC
TGAGCGCCTGAGACACGCCTCAGAAGAATCCCCCAAAGACTGCACTGGGAGACGATGTCCAAGGAGC
CCTCCAGAGGAGACAGTGGGAGAAAATGAGTATAAACTTGATGCCACAGACAGTGTCTGCAATGGCC
TGGCCTTACAGCAGGAGTTTAGAAGGGAGGAAGCATCCTCACACCATGACAGCCTGGAGGAGAAGGGTT
GTCTTCTGTCAAATGTGTGAGAAAACCTCTCAGCAATGAATGTAACCCGGAGGGAGCAACATGTGAAC
AGATGCCTAGATGAGGCAGAGAAGGCACAGAGACCTGCTTACCTCGGATCCCTGATTGCCCAATATGTG
GGAAACGGTTCCTCACCACCAAGAGCCGAATCAGTCACTTGAAGCAGTGTGCGGTGAGGATGGAAGTGGG
TCCCAACTCCTGCTCAGGCTGTGAGGCTACAGACAGCTCAGCCAGAGGTGGATGGCAGCCCTCAGGTA
CCCAGTTTCAGCAACAACGTTGGAGTTTGAACGGAAAGGAGTCAACCACAAAAGGGAGCAAGGAGGA
GGAAAGTCAATAAGCCTGAGGCTCCGTCTGAAGATCTGTTGGTGGCCATGGCTCTGTCTCGCTCTGAGT
GGAGCACTGTCCAGTTGTGCCCCGCTCAGACTGGAAAATGCTTTTTCTGAGAAGATAAGGCTAGGAGCA
GAGAAGAAAAGTCGAAGAAGAGACCCCGGTGTGTCCTCCACAGTTGGTAACCAAGACTGTGAGACCA
CAGGTAGACAGATTGAAGATCGTGTGGCCAGCTTCTGTGAGGAAGCAGAAGTATCTTGACCCACC
ACTTCTTGCCAGCAAGATTTCTAAGGAAGAATTGGAACCTGCAGGCTGGCAGACAGGCTGCCTGAAGGG
AAGCGAACTTTCTGTGGAACTCAGCGCTCTCACAGGAGCCTGGGCTGAGGAGTCTTCTACACAGTGG
GACTGTTTCTCAATTGTGTTCCAATGCCCTTCCAAGGAACCCAGCTACCATTGGAGCTGCCAAGCA
AGGAGAGCCGAGTCCACGGCGGCCACCTGCTTCCAGAGCAGCCTTCTGTGAGCCACAGCCCCAAGATC
CGGCTGTGTCTCCAGCCAGAGGGAGCGTCAAGCCCTCAGGACCTTGTGGACTGGCAGTGAAGGGC
TGAGCTTAGCCACAGCCGGGAGTGGGGCGTACCCACAGGTTGGACCTGGTACCTAGCAGCCTTCC
GCTGACGGGTTGTCTTCCATGTAAGAAGACCTGAAGAAGGATGACAGTGCCTCACTCTCTTGGG



[View online »](#)

TTATTGGTGACAGACTTTGGGGCCATGGTCAATAATCCACACCTGAGTGATGTCCAGTTCAGCTTGACA
 GTGGAGAGGTGCTTTATGCACACAAGTTTGTCTTTATGCGAGATGCCCACTTCTTATTCAGTATGTAAG
 CACTGAAAGCTTTTCTTCTGAAGAGGACGGGATCTGACCCAGCGTGCTCTGCTGAGTGATGTGAGCTCG
 GAGGCCGCCATGCATTTCTGAACCTACCTACATGGCAGACACTGACATGCCTCCCAGCCTGGTTCCGG
 ATCTGCGTTCCCTGGCCCTAAGGTTTGGTGTGAGTGACCTTGTTCAGCTGTGTGAACAAGTGCCCGCCGT
 GGTGGACTTAGAGGGAGAACAGCCAGAAGAGACCACTGAGGACTGTGAAAGCCGAGCAGAGACTTTCCTG
 GAACTCCTGAGGTCGGTGTGGGTAGACAATGAGGAGGAAGTGGAGACTCTGCTGAAACCTGAGCTGTG
 AAGAAGAGAGAGAAAGAGTGAATGAAGCAGAAATGGAAGAGATATGAATTTGCTGCTACGCAGAGGAA
 GCTTCTCAGTGGGGGAGAGCAGCAGACCCAGATGGGAGCACTAACCCGCATGGGGAAGACGGTGCAGTT
 TCTGAGCCTTCCCTGGCAGGTGTCCAGAGTAACAGACAGCTAGAAAAACAGAGCACATGGAGTCATCTG
 GGTTAGAAAAAGAAGAGGCACTAGCCAGCTGGGAACAAGAAGGACATTCCACTCCACTGCAGGACCAGTG
 CCCAGACTGGGCAGGAAAGCAGAGGCCAGGATGCATTGGGGGAGGCAACTGACGACCCAGCTTCTG
 AGCCGCCACAGGAGGGGAAAGAGTGTCTGCCTTTCACCCAAACAAGGCCCATGGCTGCAAAACAGCCCC
 TTCCATCAAATCCAAGAGTGTCTGAACTGTCAAAAACAGTTGATCATGAAGAGCAGAGTGACCA
 TGTCAGGGAGACGCAGGCAGACATGGCCAGGCACCTACTCCACTCCTGCAGCCTTGTGTACAGTCT
 TCTGTGGATGGAAGTCCCAGCCAGTCATGGCTTACCTATACCACACAAGTCATTTGTCCCCTCAGTGT
 CCCAGTCACACAGTAGCATTTCAGGGTGGCATCCCCAAGATCACTGTCTCCAACACACCAACTAAGCA
 GAGGAGGGGACGTAACTTGTACATTACGGAAAGATGCTGGCCACCACAGAGGCCAACAAAGTAGCCCC
 ATAGCGGGACACAGAAATAGGGGCATCCTGATTTCCCCAGCAAAGTCTCCACCCATTGACCTCACACAGT
 CAGTACCCGAGCCCTGAGCCCCAGGGCCAGGATCCTCTGCATTTCTGTAAGAAAGGAGGATGAGGTCAT
 CCTGTTACTGGACTCAGATGAGGAGCTGGAGCACACCAAGACAGAGTCAGTTTCTAAAGATTCCCCAGAA
 GGAAGGAAAGTCCAGAAATTTAGCCCCAGTCTCTGAACTGTTTCAGTCATTGATGTTGAAGAAGATC
 ATGAACATTTCCAAAGCCCACTGAAGAGAGAGCCGGGCTACAGCACGGGAGGAAAGACAGCTGGGAAA
 CCAGTCTGCGCTGGCTGCAGAGACATCCCTGGCTGCTCTGCAGCCAGAAAACAGCCTGGATGAGGAC
 AGTGCTACAGACACCTCTGGCTGGTGCCTGCCACTCCAGGGGTGAGCAGGAGTCGTGATTGCTCATCAC
 AGACCCAAATCAAAGCCTTAAGACCAGGATTCGTCAGATGAGACTGCTCAGCAAAACCTAGACCTAA
 CTTAGAACGCAGGACCATGCTGGAAACAGCCAGCAGTTCTCTGTGATCATGCCACACACAGCCTATT
 ACTCTAGGAGCCTTTGACAGCGGAAGACAGGCCTACAGAAGCCCTTCCCATCCCTACCCAGGCACCACA
 GACTCTCTTCTCACAGCCATCATGTCTGGCCCTGATTTTACCAGGTGGTCCCAGAAATCTTCCGCACC
 TAGACCATGCCTGCCAAATCTGCCTGCAGCTGATGATGTGGTAGAAGTTGGGACAGTGATGATGAGGTG
 GCTTCCATCAAGGAAACAGCAGCCCCGTGCTAGATGGTGACCCCCAGTCCCATGGGTGACTACTGTT
 GGAATGAGCCTCTCTACCAATTCGAATGACCACTTGAATCTGGAGCGGACCGGCCCTGACCACAAG
 CAGTCCCAGCAGTCAGGTCTGGAGGCTTTCACAGTGTGACTGCCACTCCCCGGGACTTGGTACCACC
 CCCATCCGAGGAAGCTGTGGTACGCTGAGAGAGTCTCAGGAACGGTCTCACTGGCTGGCTCTCCAGAGG
 CTCTGTGGGACGACTGGAATGAGGAGGAAGGACAGTCTCCAGAGGCCCCACCTGTGGCTCAAATGCTGAG
 TACCAGAACTCGGAAGCCAGACAGGCCAGAGACACCAAAAGGTGCTAACCCAGAAAAGAAGTTCCTCCC
 AAAGTGCTATAACTCCAATGCCAAGGTATTCGATCATGGAGACCCCGGTGCTGAAGAAAAGAACTGGACA
 GGTTTGGAGTCCGTGCTCTGCCAAACGCCAGATGGTTCTAAAAGTGAAGGAGATTTTCCAGTACACTCA
 CCAGACTCTGGAGTCGGACTCTGAGGATGAGGTCCAGTCCCCCAGATACCCGAGAACTACCTTGTGCG
 CAGGCATCTACCACTGAGACCTGCAACCTTCAAGGTTGCCAACTGGGGAGCCTTACATCCTGATGGTG
 ACGCCAGCTCCCAGCCTCCCAGGAATCCATGGCTACCTCTGTGGACGGCAGTGACAACCTTTAGCTC
 TAAAAGCTCCTCTGCTGAGTTTGGAGTGCCTTGTGATTTAGATGAAGACAAGGATGAGGAGGTGCGG
 GTCAGTGCATCACAGGCCGAATCCAGGCCGAGACACAGAGGAGGCACTGAGGCCTATATCCGCTCTA
 AGCCTGCCCTGCACAGGCAGGTCTGAGGTACCAGCCTGTGGAGCTGGCCGAGCTGCAGGCTGAGCTGAA
 ACAGAATGGCATCCCTGTGGCCATGGGCAAGCTGTGGACATCCTGGACGCTCAGTGCATCACCTTACC
 ACTGCTGCAGCCGAAAGGAGAACTCAAACACAAGAGACGGCAGCCCTCAGGCCGAAAGAAAAGGATC
 AGAAA

ACGCGTACGCGGCCGCTCGAG – GFP Tag – GTTTAA

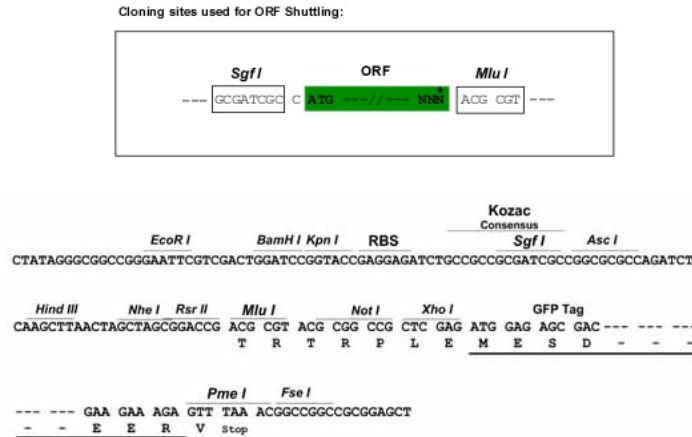
Protein Sequence: >MG212034 representing NM_177472
 Red=Cloning site Green=Tags(s)

MVPESAPNGNSQPLPSCFTTTGVPSPSKPRVSELVLQRMKQFKRADPERLRHASEESPQKTALGDDVPRS
 PPEETVGENEYKLDATSDAAMALALQQEFRREEASSHHDSLEEKGLFFCQMCQKNLSAMNVTRREQHVN
 RCLDEAEKAQRPA SPRIPDCPICGKPFLLTKSRI SHLKQCAVRMEVGPQLLLQAVRLQTAQPEVDGSPQV
 PSFSNNVGGGLKRKGVTTKREPRRRKVNKPEAPSEDLVAMALSRSEVEHCVPVPPRLRENAFSEKIRLGA
 EKKSRKKRPPVPCPQLVTQDSETTGRQIEDRVAQLLSEEAEELSCPTPLASKISKEELEPAGWRARLPEG
 KRNFLWEL SALTGAWAEESFYTVGLFPPIVSQCPKQPLLELPKQGPSPRRPPASQSSLPVSHSPKI
 RLLSSSQRERQALQDLVDLAVEGLSSSPQPSRGVPTGLDLVPSSLPLTGFVLPCKKTLKKDDASLSLGL
 LLVTDGAMVNNPHLSDVQFQLDSGEVL YAHKFVL YARCPILLIYVSTESFSSEEDGDLTQRALLSDVSS
 EAAHAFLNYL YMADTDMPPSLVPDLRSLALRFGVSDLVQLCEQVPAVVDLEGEQPEETSEDCE SRAETFL
 ELLRSVWVDNEEEVETLLKPELCEEERERVNEAEMEEIYEF AATQRKLLQWGRAADPDGSTNPHGEDGAV
 SEPSLAGVQSNRQLENTEHMESSGLEKEEALASWEQEGHSTPLQDQCPDWAGKAE AQDALGEATDDPSFC
 SRHRRGKECLPLHPNKAHGCKQPLSNPRVSEL SQITVDHEEQSDHVRETQADMAQAPTPHSCSLVSQS
 SVDGSPSQSWLHLYHTSHLSPSVSQSHSSI SRVASPRSLPTPTTKQRRGNSIIVTLRKDAGHRRGQSSP
 IAGHRNRGILISPAKSPPIDLTQSVPEPLSPRAQDPLHFVKKEDEVILLDSDELEHTKTESVSKDSPE
 GRKYPEFSRPSSELSVIDVEEDHEHFQSPKREAGLQHGEQGQGNQALGCRDIPWLLCSQKTSLDED
 SATDTSWLVPATPGVSRSDCSSQTQIKSLKTRIPSDETAQQTPRPNLERRTMLETAQQFSVIMPHTQPI
 TLGAFDSGRQAYRSPSHPYPRHRLSSSQPSCPGPDFTRWSQKSSAPRCLPNLPAADDVVEVGSDSDEV
 ASHQGNSSPVL DGDPPGPMGDYCWNEPLSPIDHLNLERTGPLTTSSPSSQVLEALHSDDCHSPGLGTT
 PIRGSCGTLRESQERSSLAGSPEALWDDWNEEEGQSPEAPPVAQMLSTRTRKPRPETPKGANQKKNLPP
 KVPIITMPRYSIMETPVLKKELEDRFGVRLPKRQMLKKEIFQYTHQTLESDESEVQSPQIPALPCR
 QASTTETCNPSRLPTGEP SHPDGDAQLPASQESMATSV DGDNSFSSKSSAEFGAAFEYSDEDKDEEVG
 VTASQAAIQAADTEEAVRRYIRSKPALHRQVLRYPVELAELQAEKQNGIPVAMGKLSDILDAQCITFT
 TAAARKEKLNKRRQPSGRKKKQK

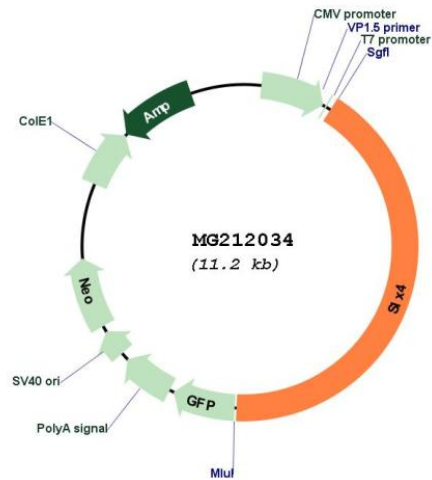
TRTRPLE - GFP Tag - V

Restriction Sites: SgfI-MluI

Cloning Scheme:



Plasmid Map:



ACCN: NM_177472

ORF Size: 5744 bp

OTI Disclaimer: The molecular sequence of this clone aligns with the gene accession number as a point of reference only. However, individual transcript sequences of the same gene can differ through naturally occurring variations (e.g. polymorphisms), each with its own valid existence. This clone is substantially in agreement with the reference, but a complete review of all prevailing variants is recommended prior to use. [More info](#)

OTI Annotation: This clone was engineered to express the complete ORF with an expression tag. Expression varies depending on the nature of the gene.

Components: The ORF clone is ion-exchange column purified and shipped in a 2D barcoded Matrix tube containing 10ug of transfection-ready, dried plasmid DNA (reconstitute with 100 ul of water).

Reconstitution Method:

1. Centrifuge at 5,000xg for 5min.
2. Carefully open the tube and add 100ul of sterile water to dissolve the DNA.
3. Close the tube and incubate for 10 minutes at room temperature.
4. Briefly vortex the tube and then do a quick spin (less than 5000xg) to concentrate the liquid at the bottom.
5. Store the suspended plasmid at -20°C. The DNA is stable for at least one year from date of shipping when stored at -20°C.

RefSeq: [NM_177472.5](#), [NP_803423.2](#)

RefSeq Size: 5709 bp

RefSeq ORF: 4698 bp

Locus ID: 52864

UniProt ID: [Q6P1D7](#)

Cytogenetics: 16 2.34 cM

Gene Summary: This gene encodes a protein containing a BTB (POZ) domain that comprises a subunit of structure-specific endonucleases. The encoded protein aids in the resolution of DNA secondary structures that arise during the processes of DNA repair and recombination. Knock out of this gene in mouse recapitulates the phenotype of the human disease Fanconi anemia, including blood cytopenia and susceptibility to genomic instability. [provided by RefSeq, Dec 2013]