

Product datasheet for **MG212032**

Arhgef11 (BC079565) Mouse Tagged ORF Clone

Product data:

Product Type:	Expression Plasmids
Product Name:	Arhgef11 (BC079565) Mouse Tagged ORF Clone
Tag:	TurboGFP
Symbol:	Arhgef11
Synonyms:	B930073M02, E130307F09, RhoGEF, mKIAA0380
Mammalian Cell Selection:	Neomycin
Vector:	pCMV6-AC-GFP (PS100010)
E. coli Selection:	Ampicillin (100 ug/mL)
ORF Nucleotide Sequence:	>MG212032 representing BC079565 Red=Cloning site Blue=ORF Green=Tags(s)

TTTTGTAATACGACTCACTATAGGGCGCCGGGAATTCGTCGACTGGATCCGGTACCGAGGAGATCTGCC
GCC**CGATCGCC**

ATGAGCATACGGTTGCCCATAGTATAGACAGGTTAAGTAGCCTGTCTTCTCTGGGAGATTCTACACCTG
AACGCACATCCCCTTCTCACCACCGCCAGCCCTCTGACACCTCTGAGACAACAGGTCTTGTTGAGCGCTG
TGTCATCATCCAAAAGGACCAGCATGGCTTTGGCTTACAGTTAGTGGAGATCGCATTGTGCTGGTGCAG
TCTGTGCGCCCTGGAGGCGCAGCCATGAGAGCTGGTGTGAAAGAGGGTGACCGGATCATCAAAGTAAACG
GCACCATGGTGACCAATAGCTCACACCTGGAGGTAGTGAAGCTTATCAAATCTGGCGCCTATGTTGCGCT
TACCCTCCTGGGCTCTTCTCCTTCCATCGGTGTCTCTGGGCTCCAGCAGAACCCTTCTCTGTCAGGA
GGCCCCAGAGTTAACCCCATGATTCCTCCACCACCTCCTCCTCCACCCTTGCCACCTCCACAACACATTA
CTGGACCTAAACCTCTACAGGATCCTGAAGTCCAAAAGCAGCCACTCAAATCCTCAGGAATATGCTAAG
GCAGGAGGAGAAGGAGTTACAGCGTATCTGTGAGGTGTATAGTCGGAACCCCGCCAGCCTGCTAGAAGAG
CAAATCGAAGGTGCCCGGCGGAGTCACTCAATTACAGCTGAAGATCCAGCAGGAGACTGGTGGCTTAG
TGGATGTACTTCCACTCTGTGGTGAGACCAGCCAGAGAACATGTGAAGGCCGCTCTCTGTGGACTCCCA
GGAGGCAGACAGTGGCTTGGACTCAGGGACAGAACGCTTCCCTCCATCAGTGAGTCATTGGTGAATCGG
AACTCAGTATTGTCAGATCCTGGACTAGACAGCCACAAAACCTCCCCTGTAATCCTGGCCAGGGTGGGCC
AGCACCACAGGCGACAGGGCTCAGATGCAGCGGTGCACCCCTCAACCACAGGGTATAGATCAAAGCCCC
AAAGCCTCTGATTATTGGCCAGAGGAAGATTATGACCCAGGCTATTTCAACAATGAGAGTGACATCATC
TTTCAAGATCTTGAAAACTGAAGTCACATCCAGCTTACTTGGTAGTATTTCTACGTTACATCTTCTCTC
AGGCAGACCCCGCCCCCTGCTTTTTTATTTGTGTTTCAAGTTTATCAGCAGACAAATCCCAAAGATTC
CCGAAATCTGGGAAAGACATCTGGAATATTTTCTAGAGAAAAATGCGCCTCTCAGAGTGAAGATCCCT
GAGATGTTGCAGGCTGAGATCGACCTACGCTGCGAAACAGTGAGGACCCCTCGCAGCGCCTTTATGAAG
CTCAGGAGGCAGTCATGCCGAGATCCAGGAGCAGATCAATGACTATAGATCAAAGCGCACTCTGGGCT
GGCAGCCTCTATGGTAAAATGACCTACTAGACCTGGATGGGACCCTCTCGAGAGCGCCAAATGGCT



View online »

GAGAAGCAACTGGCTGCCCTTGGAGATATCTTGTCCAAATATGAGGAAGATCGGAGTGCTCCCATGGACT
 TCGCTGTTAATACCTACATGAGCCACACTGGGATCCGTCTTCGGGAGTCTCGACCTCCAGCACAGCAGA
 AAAGACCCAGTCTGCCCCGACAAGGACAAGTGGCTGCCCTTCTCCCTAAGACCAAGAAGAGCAGCAAT
 TCCAAGAAAGAAAAGGACGCCTTGGAGGACAAGAAGCGAAACCCCATCCTCAGATACATTGGGAAGCCCA
 AGAGCTCTTTCAGAGCATTAAAGCCAGGCAATGTGAGGAACATCATTAGCACTTTGAGAACAGCCATCA
 GTATGATGTCCCAGAGCCGGGGACACAGCGACTCTCAACAGGAAGCTTTCCTGAGGACCTGCTGGAGAGT
 GACAGTTACGCTCAGAGATTGCCTTGGCCGCTCTGAAAGCCTCAAGGGCCGGAGGAGATGAAGCGAT
 CCCGGAAGGCAGAGAATGTGCCCGGTCTCGAAGTGATGTTGACATGGATGCTGCTGCTGAGGCTACTCG
 CCTTCATCAGTCAGCCTCATCCTCTGCCTCCAGCCTCTCCACCAGGTCTCTTGAGAACCCAAACCCCTCCC
 TTCACCCCAAAAATGGGCCGAGGAGCATTGAGTCCCAATCTGGGGTTCTGTACAGATGTCATCCTTC
 CCCACCTCCTTGAGGATGATCTGGGCCAACTGTCTGACCTGGAGCCAGAGCCAGAAGTCCAAAATGGCA
 GCATACAGTGGGCAAGGATGTGGTGGCAAACCTTGACACAGAGGGAAATTGACCGCAAGAGGTATCAAT
 GAGCTCTTTGTGACAGAAGCATCCACCTGCGCACGCTACGAGTCTGGACCTCATCTTCTACCAGCGCA
 TGAAGAAGGAGAACCTAATGCCACGGGAAGAGCTGTCAAGGCTCTCCCTAATCTGCCTGAACTCATAGA
 GATCCACAATTCCTGGTGTGAAGCCATGAAGAAGCTCCGGGAGGAGGGCCCAATTATCAGAGACATCAGT
 GACCTCATGCTGGCTCGGTTTGTGTTGCTGCTGCCGAGAAGAGCTCCAGCAAGTAGCTGCACAATTCGTT
 CCTATCAGTCAGTAGCCCTGGAGCTAATCAGGACTAAACAACGCAAGGAGAGTTCGATTCCAGCTCTTCAT
 GCAGGAAGCCGAGAGCCACCCCAAGTGTGCGGCTCTGCAGCTTCGTGACCTGATCATCTCTGAGATGCAG
 CGGCTCACTAAGTACCCACTGCTGCTAGAGAACATCATCAAGCACACAGCGGGTGGCACATCTGAGTATG
 AGAAGCTCTGCCGTGCCCGGACAGTCCGAGAGATTCTCAAGTTTGTGAATGAAGCAGTGAAGCAGAC
 AGAGAACCGTACCCGCTTAGAAGGGTACCAGAAACGCCTGGATGCCACTGCTCTAGAGCGGGCCAGCAAC
 CCCTTGGCAGCAGAGTTCAAGAGCCTGGATCTTACGACAAGGAAGATGATCCACGAGGGGCTCTGACCT
 GGAGGATCAGCAAAGATAAGACCCTGGACCTCCAGGTGCTGTTACTCGAGGACCTGGTATGCTGTGCA
 GAGACAAGAGGAGAAGCTGCTGCTCAAGTGCCACAGCAAGACAGCTGTGGGCTCCTCAGACAGCAAGCAG
 ACCTTCAGCCCTGTGCTGAAGCTCAATGCCGTGCTCATCCGCTCTGTGGCCACAGATAAACGAGCCTTCT
 TCATCATCTGCACCTCCGAGCTGGGCCCTCCCCAGATCTATGAGCTGGTGCATTGACATCATCAGACAA
 GAATATATGGATGGAGCTCTTAGAAGAGGCTGTGCAGAAATGCCACCAAGCACCCCTGGAGATGCCCCAGTA
 CTCACCATCCCTCACCACCAGGATCCCAGGAGCCAGCCTACCAGGGCTCCACCTCCAGCAGGGTAGAGG
 TGAATGACTCGGAAGTGTATCCCACTGAAAGAGAACCCAAAGAAGCCATCTGAAGGCCCGGGCCGAGCA
 GAGAGGTCAAGACAAGCAGCTGTAGCACAAGAGGGGCTGAGCAGGAGGAGGATGCAGAGGAGCTGAGG
 GCCCTGCCTTGCCTCCTCCCTCCTGGATGGAGAAAACAGAGGCATCAGGACAAGGGACCTGTCTTTC
 TGGCCCTCACAGGCCCTGCTCATGGAGGGACTTGTGATGCTGCCCTGGAAAGTGTGGAGAAGTGTGG
 GCACCTTATCCTGTGGAGCCTGTGCTGGTGCACACTGTGAAGACTCAGGCTGCTGGCGAGCCTGAAGAT
 GACCTTACACCCACCCCTTCTGTGCTCAGCATTACCTCTCACCCCTGGGACCCAGGATCCCAGGGCAAG
 CTCCTGTATAAGTGACAACACCCAATTTCCAAGGCCAGAGGGAAGCCAGCCAGAGGGCGAGGATGTTGC
 TCTCTGTTCTCTGGCACACTTGCACCAAGGACCAGAAATTTGGCATCTGGGACTCTCCTGAGCTGGAT
 AGGAATCCAGTGAAGAGGCTTCAAGCTCAGAACCAGCAGGAAGTTACAAAGTTGAAGGAAAGTCTCTC
 TACTCCCTGGTGGTGGTGTGCGTGCAGCCAAGGTGGCGGGCAGCAATGTTACCCCTGCACTCCCAGAGAG
 TGGCCAGTCAGAACTGAGCTATCTGAAGTGAAGGCGGAGCACAGGCTACGGGGAAGTGTCTATGTC
 AGCATGCCAGCAGAACCTCTGGACTTAGCACTGAGCCTCCTGGGACACCCCAAGTCTCTCGCAGTGTG
 ACAGCCTCCCTGCATGGCCAACAGAGCCTCCGCAACACAGGGGAGTCACTGGGGTCCAGGTTCCAGCCT
 GGTCTCAGGGATATGGGTGTGATCTTCCACACCATCGAGCAACTGACCGTCAAGCTTACAGACTCAAG
 GACATGGAGTGGCCACAGAGAGCTGCTCAACTCCCTTGGAGGAGAGTCTGCTGGTGAACCACTCCTG
 TGGGAAGTTTTACACAGAGGCAGCCAGATGGACAGACTACTCCCTCTCTCCTCCAGCCAAGGAAGCCCT
 GACCTCTGACCCCAAAAACAATCAGGAGCAGGGTCTACCCTGAAGAAGGCTCCGACACCCCTGGAA
 GACAGTCCACAGACACAGCTTCGTCACCAGGACCA

ACGCGTACGCGGCCGCTCGAG - GFP Tag - GTTTAA

Protein Sequence: >MG212032 representing BC079565
 Red=Cloning site Green=Tags(s)

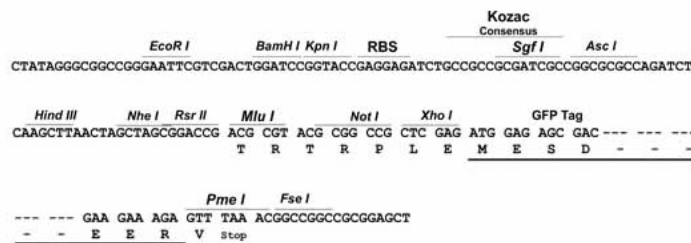
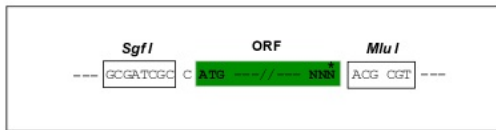
```
MSIRLPHSIDRLSSLSSLDSTPERTSPSHRQPSDTSETTGLVQRCVIIQKDQHGFGFTVSGDRIVLVQ
SVRPGGAAMRAGVKEGDRIIKVNGTMVNTSSHLEVVKLIKSGAYVALTLLGSSPSSIGVSGLQQNPSSLG
GPRVNPMPPIPPPPPPPLPPPHITGPKPLQDPEVQKHATQILRNMLRQEEKELQRICEVYSRNPASLLEE
QIEGARRRVTQLQLKIQQETGGLVDVPLPCGETSQRTCEGRLSVDSQEADSGLDSTGTERFPSISESLVNR
NSVLSDPGLDSPQTSPIVILARVQGHRRQGSAAVHPLNHQIDQSPKPLIIGPEEDYDPGYFNNESDII
FQDLEKLSHPAYLVVFLRYIFSQADPGPLLFLYCSEVYQQTNPKDSRNLGKDIWNIFLEKNAPLRVKIP
EMLQAEIDLRLRNSEDPRSALYEAQEAVMPEIQEQINDYRSKRTLGLGSLYGENDLLDLGDGDLRERQMA
EKQLAALGDILSKYEEDRSAPMDFAVNTYMSHTGIRLRESRPSSTAECTQSAPDKDKWLPFFPKTKKSSN
SKKEKDALEDKKNPILRYIGPKKSSSQSIKPGNVRNIIQHFENSHQYDVPEPGTQRLSTGSPEDLLES
DSSRSEIRLGRSESLKGREEMKRSRKAENVPRSRSDVMDAAAEATRLHQSSASSASSLSTRLENPTPP
FTPMMGRRSIESPNLGFCTDVILPHLLEDDLQGLSDLEPEPEVQNWQHTVGKDVVANLTQREIDRQEVIN
ELFVTEASHLRTLRLVLDLIFYQRMKKENLMPREELSRFPNLPELIEIHNSWCEAMKKLREEGPIIRDIS
DLMLARFDGPAREELQQVAAQFCSYQSVALELIRTKQRKESRFQFMQEAESHPQCRRLLQRLDIISEMQ
RLTKYPLLENIKHTAGGTSEYEKLCRARDQCREILKFVNEAVKQ TENRHRLEGYQKRLDATALERASN
PLAAEFKSLDLTTRKMIHEGPLTWRISKDKTLDLQVLLLEDLVLLQRQEEKLLLKCHSKTAVGSSDSKQ
TFSPVLKLNVAVIRSVATDKRAFFIICTSELGPPQIYELVALTSSDKNIWMELLEAVQNA TKHPGDAPV
LNHPSPPGSQEPAYQGSTSSRVEVNDSEVYPTEREKPKPSEGGPEQRGQDKQLLAQEGPEQEEDAELR
ALPCPPPSLDGENRGIRTRDPVLLAL TGPLLMEGLADALEDVENLRHLILWLLPGHTVK TQAAGEPED
DLTPTPSVVSITSHPWDPGSPGQAPAI SDNTQFPRPEGSQPEGEDVALCSLAHLPPRTRNSGIWDSPELD
RNPAEEASSSEPAAGSYKVVVRKVSLLPGGGVGA AKVAGSNVTPALPESGQSESELSEVEGGAQATGNCFYV
SMPAEPLDSSTEPPGTPPSLSQCHSLPAWPT EPPQHRGVTGGQRSSLVLRDMGVIFHTIEQLTVKLRHLK
DMELAHRELLNSLGGESSGGTTPVGSFHTEAARWTDYSL SPPAKEAL TSDPQNNQE QGSYP EEGSDT PLE
DSATDTASSPGP
```

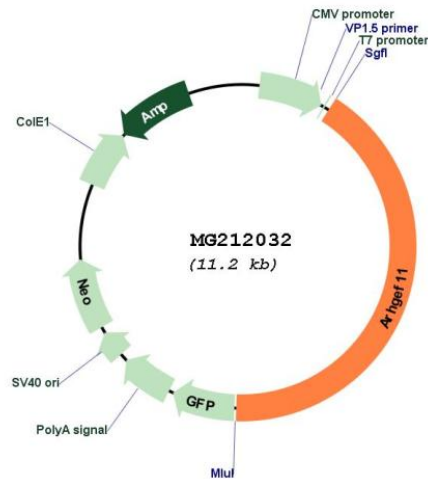
TRTRPLE - GFP Tag - V

Restriction Sites: SgfI-MluI

Cloning Scheme:

Cloning sites used for ORF Shutting:



Plasmid Map:


ACCN: BC079565

ORF Size: 4658 bp

OTI Disclaimer: The molecular sequence of this clone aligns with the gene accession number as a point of reference only. However, individual transcript sequences of the same gene can differ through naturally occurring variations (e.g. polymorphisms), each with its own valid existence. This clone is substantially in agreement with the reference, but a complete review of all prevailing variants is recommended prior to use. [More info](#)

OTI Annotation: This clone was engineered to express the complete ORF with an expression tag. Expression varies depending on the nature of the gene.

Components: The ORF clone is ion-exchange column purified and shipped in a 2D barcoded Matrix tube containing 10ug of transfection-ready, dried plasmid DNA (reconstitute with 100 ul of water).

Reconstitution Method:

1. Centrifuge at 5,000xg for 5min.
2. Carefully open the tube and add 100ul of sterile water to dissolve the DNA.
3. Close the tube and incubate for 10 minutes at room temperature.
4. Briefly vortex the tube and then do a quick spin (less than 5000xg) to concentrate the liquid at the bottom.
5. Store the suspended plasmid at -20°C. The DNA is stable for at least one year from date of shipping when stored at -20°C.

RefSeq: BC079565, AAH79565
RefSeq Size: 5617 bp
RefSeq ORF: 4658 bp
Locus ID: 213498
Cytogenetics: 3 F1