

Product datasheet for **MG212029**

Bai2 (BC056926) Mouse Tagged ORF Clone

Product data:

Product Type:	Expression Plasmids
Product Name:	Bai2 (BC056926) Mouse Tagged ORF Clone
Tag:	TurboGFP
Symbol:	Bai2
Synonyms:	Bai2
Mammalian Cell Selection:	Neomycin
Vector:	pCMV6-AC-GFP (PS100010)
E. coli Selection:	Ampicillin (100 ug/mL)
ORF Nucleotide Sequence:	>MG212029 representing BC056926 Red=Cloning site Blue=ORF Green=Tags(s)

TTTTGTAATACGACTCACTATAGGGCGGCCGGAATTCGTCGACTGGATCCGGTACCGAGGAGATCTGCC
GCC**CGATCGCC**

ATGACCCAGCCTGTCCCTCTTACTGTCTGTGATTCTGTCCCTGCGCCTGGCCACGGCCTTCGACCCTG
CCCCAGTGCCTGCTCTGCCCTGGCCTCGGGCGTGTCTACGGGGCTTCTCGCTGCAGGACCTCTTTCC
CACCATCGCCTCGGGCTGCTCCTGGACCCTGGAGAACCCAGACCCACCAAGTACTCCCTCTACCTGCGC
TTCAACCGGCAGGAGCAGGTTTGCACACACTTTGCCCGCGCCTGCTGCCCTGGACCACTACCTGGTCA
ACTTTACCTGCCTGCGGCCTGGTCCAGAGGAAGCCACAGCCCGGGCTGAGTCGGAGGTGGGACGGCCAGA
GGAGGAGGAGGAGGAGGCGGCGCAGCAGCATCAGGGTTGGAGTTGTGTGGTGGCTCAGGCCCTTACC
TTTCTGCACTTCGACAAGAACTTTGTGCAGCTGTGCCTGTGCGGTGAGCCCTCTGAGGCCCTCGTCTGC
TAGCGCCTGCTGCCCTGGCCTCCGTTTTGTGGAGGTCTTGTGTATCAACAACAACCACTCCAGCCAGTT
CACCTGTGGTGTGCTCTGCCCTGGAGTGGAGTGTGGCCGGGCTGCAGGCAGGGCTTGTGGCTTTGCA
CAGCCAGGGTGTAGTTGTCTGGGAGGCAGGGCCAAACCCGCCACCACCATCTCCGGGGCCTCCGG
TTGCCACACCCTGTCCAATGCCCTGGTCCCGGGGGCCAGCCCTCCTGCTGAGGCCGACTTGCACTC
GGGAGCAGCAATGACCTGTTACCACCGAGATGAGATATGGTGAGGAGCCGGAAGGAACCGAAGGTG
AAAACCCAGTGGCAAGGTCTGCAGATGAGCCTGGGCTATACATGGCGCAGACAGGCCACCCAGCAGCTG
AGGAGTGGTCCCGTGGAGCGTGTGTTCCCTGACGTGTGGGCAAGGCTCTGCAGGTGCGGACCCGCTCCTG
CGTGTCTCCCTATGGACCCTGTGCAGCGGGCCCTTCGGGAGACCCGGCCTTGCAACAATTACGCC
ACCTGCCAGTGCACGGCGTGTGGGAGGAGTGGGGTCTGGAGCCTGTGCTCCCGCAGCTGCGGGCGGG
GGTCTCGGAGCCGGATGCGGACCTGCGTGCCCCCAGCAGCGCGCAAGGCCTGCGAGGGTCCCGAGCT
GCAGACTAACTCTGCAGTATGGCCGCTGCCCGTGGAAAGGCCAGTGGCTAGAATGGGGTCCCTGGGGC
CCATGCTCATCTTGTCCAATGGGACCCAGCAGCGCAGCCGAAATGCAGTGTGGCGGTCCAGCCT
GGGCCAGTGCAGGTGCCCTACGGATACCCGTGAGTGCAGCAATCTCGATTGCCCGCCACTGACGG
CAAGTGGGGCCGTGGAACGCGTGGAGCCTGTGCTCAAGACGTGTGACACGGGCTGGCAACGCCGCTTC



[View online »](#)

CGCATGTGCCAGGCTTCTGGCACACAGGGCTACCTTGGCAGGGCACAGGAGAGGAGGTGAAACCCTGCA
GTGAGAAGAGGTGTCCAGCCTTCCATGAGATGTGCAGGGATGAGTACGTGATGTTGATGACATGGAAGAG
GGCGGCAGCTGGCGAGATCATTACAACAAGTGTCCCCCTAATGCCTCGGTTTCTGCTAGCCGCCCTGT
CTCCTCAGTGGCCAGGGCGTAGCATACTGGGGACTGCCAGCTTTGCTCGTTGCATATCCCATGAATACC
GCTACCTGTACCTGTCACTTCGGGAACACCTGGCTAAGGGCCAGCGCATGCTGGCAGGTGAGGGCATGTC
ACAGGTGGTGGGAGCCTGCAGGAGCTACTGGCACGGCGCACTTACTACAGCGGGACCTGCTCTTCTCT
GTGGACATCCTAAGGAACGTCACTGACACCTTCAAGAGGGCCACCTATGTCCCTTCGCGCATGACGTGC
AGCGTTTTCTCCAGGTGGTGAGCTTCATGGTGGATTAGAAAAACAAGGACAAATGGGATGATGCTCAGCA
GGTGTACCCGGGCTCTGTGCACCTGCTGCGTGTGGAAAGATTCATTACCTCGTGGCGACGCTCTC
AAGGCCTTCCAGAGCTCTCTATTGTACCGGACAATCTGGTGATCAGCATTAGAGAGAGCCTATCTCCG
CCGTGTCCAGTGACATCACGTTTCCCATGCGGGGCCAGGGGCATGAAGGACTGGGTGCGACACTCAGA
GGATCGTCTCTTTTACCCAAGGAGGTGCTCAGCCTGTCTCCCCAGAAAGCCAGCCACACCTGGGGCA
GCCACAGCAGGCAGCCCGGGCAGGGGGAGGGGCCAGGAACGGTGCCCCCTGGCCAGGCCACGCCACC
AGCGCCTTCTCCAGCTGACCCGAAGAGTCTCTCTACTTTGTGATCGGTGCTGTGCTACCCGCAC
CCTTGGCCTCATCTGCCCCCCCAGGCCTCCACTTGTGTACCTCCCGGTGATGACAGTGACTGTG
CGTCCCCCACCAGCCTCCAGCTGAGCCCTCATTACAGTGAACTCTCGTACATCATCAATGGCACCA
CCGATCCCCACTGTGCCAGCTGGGACTACTCCAGAGCAGATACCAACTCGGGGGACTGGAACACTGAGAG
CTGCCAGACCTTGGAGACCCAGGCGGCTCACACCCGCTGCCAGTGCCAGCACCTGTCCACCTTTGCCGTC
CTGGCCAGCCACCAAGGACCTGACCTGGAGCTGGCAGGTGCTCCCTCTGTCCCCCTGGTGATCGGCT
GTGCAGTGTCTGCATGGCTCTGCTCACCTGTGGCCATCTATGCAGCCTTCTGGAGTTTATAAAATC
AGAACGCTCCATCATCTTGTGAACTTCTGCCTGTCCATCCTGGCTTCCAACATTCTGATCCTGGTGGG
CAGTCCCGGTGCTGAGCAAGGGCGTATGCACCATGACGGCTGCCTTCTACACTTCTTCTTCTGTCT
CCTTTTGTGGTGCTTACAGAGGCCTGGCAATCCTATCTGGTGTGATCGGGCGGATGCGCACCCGCT
GGTTCGAAGCGCTTCTCTGCCTGGGCTGGGGTCTACCTGCCCTGGTGGTGGTGTGTCTGTGGCTTT
ACTCGACCAAAGGATATGGTACATCCAGCTACTGCTGGCTGTCCCTAGAGGGCGGCTGCTCTATGCC
TCGTGGTCCAGCAGCAGTATTGTCTGGTGAACATGCTCATCGGGATTATCGTCTTCAACAAGCTCAT
GGCTCGCGATGGCGTCTCAGACAAATCTAAGAAGCAGAGGGCTGGCCGACTGTCTTGAATCTCTGGGA
TATGGCTCTCACTGTGCTTTTTTCAAGGCTTCCAAGGGCTTCACTCTGGAGTTCTGCGTGGTACTGC
CTCTCTGGCGTTACCTGGATGTCTGCCGCTCTGGCCATGACAGATCGCCGCTCCGCTCTTCCAGGC
ACTCTTTGCCGTTTTCAACTCTGCACAAGGCTTTGTGATCACCCTGTGCACTGCTTCTGCGCCGAGAG
GTCAGGATGTGGTAAAGTGTGAGATGGTGTGTGTCGGGCTGATGAGAGTGAAGACTCCCAGACTCGT
GCAAGAACGGGCAGCTGCAGATCCTGTGAGACTTTGAAAAGGACGTGGATCTGGCTTGTGAGACAGTCT
GTTCAAGGAGGTCAACACCTGCAACCCGCTCCACCATTACCGGCACTCTGTCCCGCTGTCTCTGGATGAG
GATGAGGAGCCCAAGTCTGTCTCGTGGTCTGAGGGTGGCCTCAGCTTCTCACCAGTGCCTGGGAACA
TCCTGGTACCCATGGCAGCCTCACCAGGTCTAGGGGAGCCACCACCACCCAGGAGACCAACCTGTGTA
CATGTGTGGGAGGGTGGCCTGCGGCAGTTGGACCTTACATGGATACGGCAGAGTGAACCAGGCTCTGAG
GGGACTACATGGTCTGCCCGCGGACTTTGAGCCTGCAGCCTGGTGGTGGGGTACAGCGGGTGAAG
AGGCCCAAGGGCCCGGCTGAGGGGACCCCGCGGGCTGCCAAAACGGTAGCCACACTGAAGGCTA
CCCCAGTTCTGTCTGTGGAGCACTCGGGTCTAGGGCTGGGCCCTGCCTATGGTCTCTCCAGAACCCG
TATGGAATGACCTTCCAACCACCACCACCAACACCCAGCGCCGCAAGTACCAGAGCCAGGAGAACGTA
GCCGGACCATGCCCGTACAGTGCCTGGTTCACCATGAAGCTGGGCTCCCTTGAAGGAAAGACTTCG
GTATTCGACTTGGACTTTGAGAAGGTGATGCACACTCGGAAACGGCACTCGGAACTCTACCACGAACTC
AACCAGAAGTTCCACACTTTGACCCGCTACCGTAGCCAGTCTCAGCCAAGGAGAAACCCAGCCCCCG
GGGACGCCCTGGCTTGTCCAGCACAGGAGGCATCAAAGCTGGAGCACCTTCAAATCTATGACTGGG
CTACTGCCCCCAAGCCCGAGAACGGCTGGCCCTGCACCGACAGCAGCTGGGAGCCACAGAACCCG
CCAGACGGCGACTTCCAGACAGAGTG

AGCGGACCGACGCGTACGCGGCCGCTCGAG – GFP Tag – GTTTAA

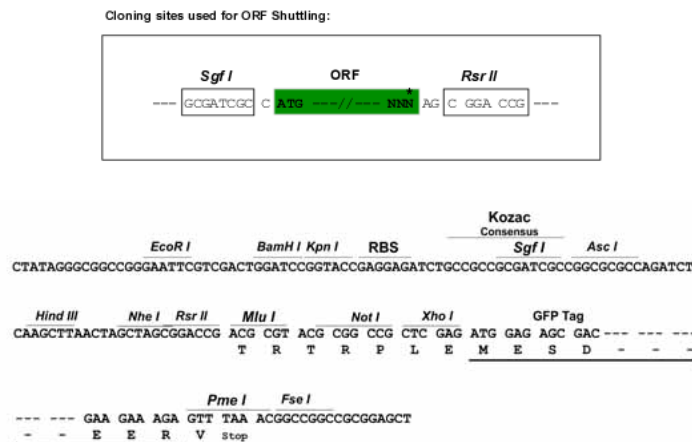
Protein Sequence: >MG212029 representing BC056926
 Red=Cloning site Green=Tags(s)

MTPACPLLLSVILSLRLATAFDPAAPSACSALASGVL YGAFSLQDLFPTIASGCSWTLENPDPTKYSLYLR
 FNRQEQVCTHFAPRLPLDHVYLNFTCLRPGPEEATARAEEVGRPEEEEEAAAAASGLLECGSGPFT
 FLHFDFKNFVQLCLSAEPSEAPRLAPAAALAFRFVEVLLINNNNSSQFTCGVLCRWSEECGRAAGRACGFA
 QPGCSCPGEAGANPATTSPGPPVAHTLSNALVPGGPAPPAEADLHSGSSNDLFTTEMRYGEEPEEPEPKV
 KTQWPRSADEPGLYMAQTGDPAEEWSPWSVCSLTCGQGLQVRTRSCVSSPYGTLCSGPLRETRPCNNSA
 TCPVHGVWEEWGSWSLCSRSCGRGSRMRMTCVPPQHGGKACEGPELQTKLCSMAACPVEGQWLEWGPWG
 PCSSSCANGTQQRSRKCSVAGPAWATCAGALTDTRECSNLDPCATDGKWPWNAWSLCSKTCDTGWQRRF
 RMCQASGTQGYPCGEGTGEVVKPCSEKRCPAFHEMCRDEYVMLMTWKRAAAGEIIYNKCPPNASGSASRRC
 LLSAQGVAYWGLPSFARCSHEYRYLYLSLREHLAKGQRM LAGEGMSQVVRS LQELLARTTYSGDLLFS
 VDILRNVTDTFKRATYVPSADDVQRFQVVSFMDSENKDKWDDAQVSPGSVHLLRVVDFIHLVGDAL
 KAFQSSLIVTDNLVISIQREPISAVSSDITFPMRGRGMKDWVRHSEDRLFLPKEVLSLSSPGKPATPGA
 ATAGSPGRGRGPGTVPPGPGHAHQRLLPADPEESSYFVIGAVLYRTLGLILPPRPPLAVTSRVMTVTV
 RPPTQPPAEPLITVELSYIINGTTDPHCASWDYSRADTNSGDWNTESCQTLETQAAHTRCQCQLSTFAV
 LAQPPKDLTLELAGAPSVPLVIGCAVSCMALLTL LAIYAAFWRFIKSERSIILLNFCLSILASNILILVG
 QSRVLSKGVCTMTAAFLHFFFLSSFCWVLEAWQSYLAVIGRMTRLVKRFLCLGWGLPALVAVSVGF
 TRTKGYGTSSYCWLSLEGGLYAFVGPAAVIVLVNMLIGIIVFNKLMARDGVSDKSKKQRAGRLSWNLWG
 YGSQLCLFPKLPASLWSSCVLPLLLALTWMSAVLAMTDRRSVLFQALFAVFNSAQGFVITAVHCFLRRE
 VQDVVKCQMGVCRADESESDSPDCKNGQLQILSDFEKDVLACQTVLFKEVNTCNPSTITGTL SRLSLDE
 DEEPKSLVGPGEGLSF SPLPGNILVPMAASPGLGEP PPPQETNPVYMCGEGLRQLDLTWIRQSEPGSE
 GDMYMLPRRTL SLQPGGGGTAGEEAPRARPEGTPRRAAKTVAHTEGYPSFLSVEHSLGLGPAYGSLQNP
 YGMTFQPPPTPSARQVPEPGERSRMPRTVPGSTMKLGSLERKKLRYSDLDFEKVMHTRKRHSELYHEL
 NQKFHTFDYRSQSSAKEKPSPPGGRPGLSQHRRHQSWTFKSMTLGSLPPKPRERLALHRTAAWEPTPEP
 PDGDFQTEV

SGPTRRRLE - GFP Tag - V

Restriction Sites: SgfI-RsrII

Cloning Scheme:

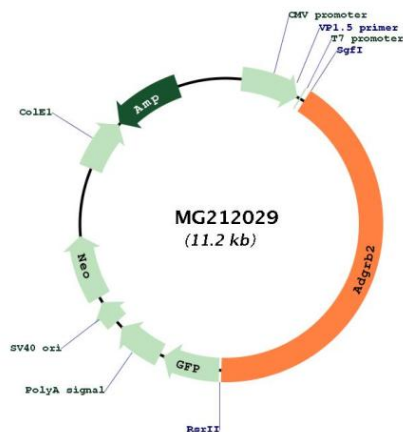


ACCN: BC056926

ORF Size: 4649 bp

- OTI Disclaimer:** The molecular sequence of this clone aligns with the gene accession number as a point of reference only. However, individual transcript sequences of the same gene can differ through naturally occurring variations (e.g. polymorphisms), each with its own valid existence. This clone is substantially in agreement with the reference, but a complete review of all prevailing variants is recommended prior to use. [More info](#)
- OTI Annotation:** This clone was engineered to express the complete ORF with an expression tag. Expression varies depending on the nature of the gene.
- Components:** The ORF clone is ion-exchange column purified and shipped in a 2D barcoded Matrix tube containing 10ug of transfection-ready, dried plasmid DNA (reconstitute with 100 ul of water).
- Reconstitution Method:**
1. Centrifuge at 5,000xg for 5min.
 2. Carefully open the tube and add 100ul of sterile water to dissolve the DNA.
 3. Close the tube and incubate for 10 minutes at room temperature.
 4. Briefly vortex the tube and then do a quick spin (less than 5000xg) to concentrate the liquid at the bottom.
 5. Store the suspended plasmid at -20°C. The DNA is stable for at least one year from date of shipping when stored at -20°C.
- RefSeq:** [BC056926](#), [AAH56926](#)
- RefSeq Size:** 5155 bp
- RefSeq ORF:** 4649 bp
- Locus ID:** 230775
- Cytogenetics:** 4 D2.2
- Gene Summary:** Orphan G-protein coupled receptor involved in cell adhesion and probably in cell-cell interactions. Activates NFAT-signaling pathway, a transcription factor, via the G-protein GNAZ. Involved in angiogenesis inhibition (PubMed:12218411).[UniProtKB/Swiss-Prot Function]

Product images:



Circular map for MG212029