

Product datasheet for **MG212021**

Depdc5 (NM_001025426) Mouse Tagged ORF Clone

Product data:

Product Type:	Expression Plasmids
Product Name:	Depdc5 (NM_001025426) Mouse Tagged ORF Clone
Tag:	TurboGFP
Symbol:	Depdc5
Synonyms:	AV016528
Mammalian Cell Selection:	Neomycin
Vector:	pCMV6-AC-GFP (PS100010)
E. coli Selection:	Ampicillin (100 ug/mL)
ORF Nucleotide Sequence:	>MG212021 representing NM_001025426 Red=Cloning site Blue=ORF Green=Tags(s)

TTTTGTAATACGACTCACTATAGGGCGGCCGGAATTCGTCGACTGGATCCGGTACCGAGGAGATCTGCC
GCC**CGATCGCC**

ATGAGAACCACAAAGGTCTACAACTTGTCCATCCACAAGAAGGGCTTTGGGGCAGTGATGATGAGCTAG
TCGTGAACCTAAAGTATTTCTCACATCAAACCTGGAGACATTTGGGAGATTGCTACCCCAATGATGA
GTACAGTCCTTTGCTTTGCAAGTCAAGTCGTTAAGGAAGATTTACAGAAAGAACTATCAGTGTGGAC
CAGACTGTGACTCAAGTATTCGGCTAAGACCTTATCAAGATGTCTATGTGAATGTTGTAGACCCCAAGG
ATGTGACTCTTGACCTGGTGAATTGACTTTTTAAGGATCAGTATATTGGCCGTGGGGATATGTGGCGACT
AAAGAAAAGTTTGGTGAGCACCTGTGCCTATATCACTCAAAAAGTGAATTTGCTGGCATCAGGGCACAG
GCTGGTGAGCTGTGGTCAAGAATGAGAAGGTCATGTGTGGTTACATTAGTGAAGAGACCAGGGTGGTGT
TCCGTTTACGTCGGCTATGGTTTACATATTTATTTCAGATGAGCTGTGAAATGTGGGATTTTGATATTTA
TGGGGTCTGTACTTTGAGAAAGCTGTGAACGGTTTCTCGCCGACCTGTTTACTAAATGGAAGGAGAAG
AACTGTAGTCATGAAGTACTGTGGTCTGTTTCCAGAACTTTCTATGATGCAAAATCTATTGATGAAT
TTCCTGAAATAAACCAGCTTCAATTCAAGAGGATCACAAAGGGAGATTCTATGAGGACTTTTACAAAGT
GGTGGTGCAGAATGAGAGAAGGGAAGAGTGGACTTCACCTCGTGACCATTAACAACTCTTATCCAG
TATCCAGTGTGGTGGCAGTGGAAACAGGCAGGGGCTTTTCTCAAGGAGACAATTTCTCAGCACAAG
GAAACTACCTAGAGGCCATCAACTTGCAATTCAATGTGTTTGACAAGCACTACATCAACCGAAACTTTGA
CCGAACTGGGCAGATGTCTGTGGTGATCACGCCGGGGTGGTGTCTTTGAAGTGACCCTACTCATG
ATCTTGACCAAGCAGCGGATGATTGATAATGGAATTTGGTGTGGACTTAGTGTGCATGGGAGAGCAGCCAC
TACATGCTGTGCCATTATTCAAGCTACATAACCGGAGTGTCCGAGGGATTCTCGACTGGGTGATGATTA
TAATATTCCTCACTGGATAAACCATAGTTTCTACACATCCAAAAGCCAGCTCTTTTGAACAGTTTCACT
CCACGGATAAACTAGCAGGAAAGAAAGTCTGCCTCTGAGAAAACCAAAAATGGTCGTGATACATCTCTCG
GGACTCCAAAGGAATCTGAAAACACCTTCCCATCCAAGTAGATTATGATGCCTACGATGCTCAAGTGT
CAGGCTGCCTGGCCCATCCGGGCTCAGCGCTCGCCACCTGCAGGTCTGTGAGAGAACAGGAGAATCAC



[View online »](#)

AGTCGCAAAAGTCAAGCTCCTGTGATGTCTCATCCAGCCCTTCCTGCCAAGCCGTGCACTGCCCACTG
AGGAAGTGAGGAGCCAGGCTTCTGATGACAGCTCCCTGGGCAAGAGCACCAACATCTGTATGCCCTAA
CCCCACCTGCACCAGTATGAAGTCAGCAGCTCACTGGGCTACACCAGCACCCGAGATGTCTGGAGAAC
ATGATAGAACCCACAGAGGGACTCCAGTGCACCAGGAAGTTCCATGTGGGTAGTGCAGAGTCCATGC
TCCATGTCCGACCTGGAGGATACACGCCTCAGAGAGCGTGATTAACCCCTTCGCCCCCTCGAGGATGCC
CATGAAGCTCACCTCCAACAGAAGGCGCTGGATGCACACTTTCTGTAGGCCATCTGGAGAGGCCATC
CAGATCCATCATCAGACCCGGCAAAACATGGCAGAGCTGCAGGGCAGCAGGCAGAGGGACCTACCCACT
CCTCTGCAGAGCTGTTGGAGTTGGCATACCATGAAGCTGCCGGGAGGCACAGCACTTCCCGCCAGCCTGG
TGACAGCATGTCTTGAACCTCAGTGGAAACGGAAGAGCTTTCTGTCAGCCTGCTTAGCAACAGCAGTACA
GGTGTGAATCCTAGGACCCAGAACAAGGACTCCCTAGAGGACAGTGTCTTACTCTCCAGACCCAAATTC
TGACACTGTCTGCTCCCCCTGTAGTGCCAGGCTTCTGTTGCACAGTTGGAGTGGATTGGAAGTCTCTTAC
TACTCTGCATGCCTTCCCCTCACCCTGACTACTTCCCGGACCGTCAGGGCCTGCAGAATGACTACACA
GAGGGCTGCTATGATCTCTCCAGAAGCAGACATGGACAGGAGGGATGAGGAGGGTGTCAAATGACAG
CCCAGCAAGTGTGTAAGAGTTCATCTGCCAGCGTCTCATGCAGGGTTACCAATCATAGTACAGCCAAA
GACCCAGAAACCCAACCCACAGTCCCACCCCATTTGAGCAGTAGCCACTCTATAGCAGAGGCCTGTG
TCCCGAAATCGCCCTGAGGAGGAAGGCCAGTATTGGTTAAGTATGGGCAGAACTTCCATGAAGGTGACAC
TCAAGGACAAGATGATCACAGTAACTCGTTACCTTCCCAAGTACCCTTATGAATCTGCCAGATCCATTA
CACCTACAGCCTCTGCCCTTCCCCTCTGACTCGGAGTTGTCTCCTGTTGGGTGGATTTCTGCCACGAA
CGGCTCGAGGAATACAAGTGAATTAAGTATGATCAGTATATTTGTTCTGCTGGCTCTGAAGACTTACGT
TAATCGAGTCTCTGAAGTCTGGAGAACCCGATTTTTACTACTGCCAGCCTGTGTTACTGCCACCAAGCG
CATCACAGAAGGGGAGGTGCACTGTGACATCTATGGGGACAAACCCCGTGCAGATGAAGATGAGTGGCAG
CTTCTAGATGGCTTTATTCGCTTTGTAGAGGGCTTAAATCGCATCCGCAGGCGCCACCCGCTCAGACGCA
TGATTCCGAAGGGGACTGCCATGAAAGGCTTGCAGATGACCGGGCCACTCTGCACACTCTCTCGAGGC
AGCAGGCCCTCCAGTCGGCAAGAAAGGAACCTCAGCTCTGTCTGCCCTGCTGGAGATGGAAGCTAGTCAG
AAGAGCCTAGGAGAACAGCAGCAGACTGTGCACGAAAAAGCTCCACTCAGCCAGCTGAGAACAGCAGTG
TTGCCATGACTCCCACCTATGTGGACAGCCACGCAAGGACGGGGCCTTCTTTATGGAGTTGTCCGCAG
CCCACGCACAGCATCATCTGCCTTCTACCCTCAGGCATCTGTGGACCAACAGCTCCTCTGGTGTAGAC
AGCACCAGTTTAGGGGTGAGCACAGGCCAGCCATGGATAGAGGCAACAACCAGACCTTTGGAACTCCC
AGAACATAGAACAGGCCTTCCCTCTGCAAACTCTGGTACTACAGCTCTCAGCAGCATGTAGCAAGCTC
TCTAACATCGTCTTCTACCCTGGTGGAGATTCTGGAAGCCATGAAGCATCCCTCGACAGGAGTCCAGCTG
CTGTCTGAACAGAAGGGCCTTTACCGTGTCTCATCAGTGTGAGGTCGTACTGTTGATGAACA
ACGTGGAGGGGGTCCAGACGCAGGCGATGGGCATAGACATCATGCAGAAAATGCTGGAAGAGCAGCTCAT
AACGCATGCATCTGGTGAAGCATGGCGGACCTTCTATGGCTTCTATTTCTACAAGATAGTAATGGAC
AAAGAACCAGAAAGAGTGGCTATGCAGCAGCCCTCTGCCCTGGTACACAGCAGGAGCGGATGACTTTG
CCAGCTTCCAACGCAAGTGGTTTGGAGTGGCCTTTGTGGCAGAAGAGCTTGTGCACTCTGAGATTCTGC
CTTCTCTGCCCTGGCTACCTAGCCGGCCAGCCTCTTATGCAAGCAGACACAGCTCCTTTAGCCGAAGT
TTTGGAGGACGGAGCCAGGCAGCTGCCTGTTAGCTGCTACTGTCCAGAGCAGAGGACTGTGACCCTGG
ATGTTGATGTGAACAACCGAACGGACCCGCTGGAATGGTGCAGCTGTTACTACCATGGAACCTTCTCT
CAATGCCGCTTTGAGATCAAGCTACACTGGATGGCAGTACTGCCACAGTGTGTTGAGATGGTCCAA
GGTTGGCATCGAAAAGCTACCTCCTGTGGCTTCTTGTGGTCCCAGTTTTGGAGGGTCCCTTTGCTCTGC
CCAGTTACCTGTATGGTATCCCCTGAGGGCCAGCTTCTCATCCGCTCAACCTCAGCTGCTTGTCTCAA
GGAGGGCAGCAGCACCTGTTTCGATAGTTTGGATTTGTGCAAGATAAATATTCTGTCTCCGCTTTAACT
TCCCTGCTGAGAAATAAGCCACAGTATATCCATGTACAGGAACGGTGTTCCTTACAGCTGCCGTACTCCAA
ACGCAAGTTTTAGGGCAGCAGCGGGCGGACGGAACCTACCAGCTCCACCAACCAAAACATGTTCTGT
GAGGAGCGGGTGGCTACAACCTGGCCTACAACACCATGC

ACGCGTACGCGGCCGCTCGAG - GFP Tag - GTTTAA

Protein Sequence: >MG212021 representing NM_001025426
 Red=Cloning site Green=Tags(s)

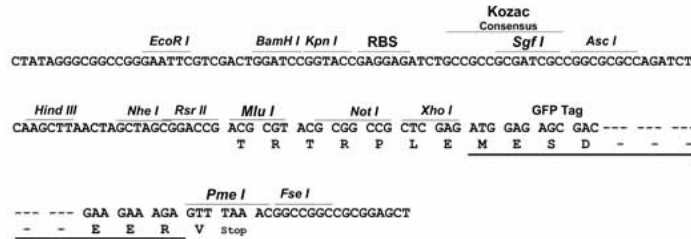
MRTTKVYKLVIIHKKGFGGSDDELVVNPKVFPHIKLGDIVIAHPNDEYSPLLLQVKSLEKDLQKETISVD
 QTVTQVFLRPYQDVYVNVVDPKDVTLDELVELTFKDQYIGRDMWRLKSLVSTCAYITQKVEFAGIRAQ
 AGELWVKNEKVMCGYISEETRNVFRSTSAMVYIFIQMSCEMWFDIYGDLYFEKAVNGFLADLFTKWKKEK
 NCSHEVTVVLFSRTFYDAKSIDFPEINRASIQEDHKGRFYEDFYKVVVQNERREWTSLLVTIKKLFIQ
 YPVLVRLEQAGGFPQGDNSTSAQGNYLEAINLSFNVFDKHYINRNFDRTGQMSVITPGVGVFEVDRLM
 ILTKQRMIDNGIGVDLVCMEQPLHAVPLFKLHNRSVPRDSRLGDDYNIPHWINHSFYTSKSQLFCNSFT
 PRIKLAGKKSASEKTKNGRDTSLGTPKESENTLPIQVDYDAYDAQVFRPLPGPSRAQRLATCRSVREQENH
 SRKSASSCDVSSSPSLSRALPTEEVRSQASDDSSLGKSTNILMIPNPHLHQYEVSSSLGYTSTRDVLEN
 MIEPPQRDSSAPGRFHVGSAESMLHVRPGGYTPQRALINPFAPSRMPMKLTSNRRRWMTFPVGPGEAI
 QIHQTRQNMAELQGSQRDPHTSSAELLELAYHEAAGRHSTSRQPGDSMSLNFSGTEELSVSLLSNSST
 GVNPRQTQNKDSLEDSVSTSPDPILTLSAPPVVPVGFCTVGVWDKSLTTPACLPLTTDYFPDRQLQNDYT
 EGCYDLLPEADMRRDEEGVQMTAQQVFEEFICQRLMQGYQIIIVQPKTQKPNTTVPPLSSPLYSRGLV
 SRNRPEEEGQYWLSMGRTFHKVTLKDKMITVTRYLTPKYPYESAQIHYTSLCPSHSDSEFVSCWVDFCHE
 RLEEYKWNLYLDQYICSAGSEDFSLIESLKFWRTRFLLLPAVATKRITEGEVHCDIYGDKPRADEDEWQ
 LLDGFIIRFVEGLNRIIRRRHRSRDMIRKGTAMKGLQMTGPI SAHSLEAAGPPVGGKGTSALESALLEMEASQ
 KSLGEQQTTVHGKSSQPAENSSVAMTPTYVDSPRKDGAFMEFVRSRPTASSAFYPQASVDQTAPLVLD
 STSLGVSTGQPMDRGNNQTFGNSQNI EQAFPANSANGDYSSQQHVASSLTSSSTLVEILEAMKHPSTGVQL
 LSEQKGLSPCCFISAEVHWLMNNVEGVQTOAMGIDIMQKMLEEQLI THASGEAWRTFIYGFYFYKIVMD
 KEPERVAMQQPSAPWYTAGADDFASFQRKWFVAFVAEELVHSEIPAFLLPWLPSPASYASRHSSFSRS
 FGGRSQAALLAATVPEQRTVTLDVDVNNRTDRLEWCSCYYHGNFSLNAAFEIKLHWMVAVTATVLFEMVQ
 GWHRKATSCGFLLVPVLEGPALPSYLYGDPLRAQLFIPLNLSCLLKEGSEHLFDLSDLCKINILSPLLT
 SLLRISHSISMSQERCSFSCRTPNASFQGS SGGDGLPAPPTKTCVRSGLATTGPTTPC

TRTRPLE - GFP Tag - V

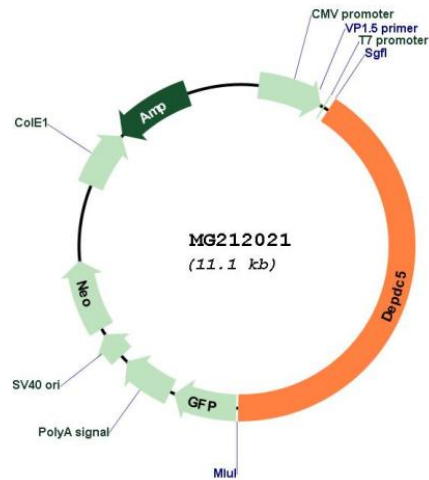
Restriction Sites: SgfI-MluI

Cloning Scheme:

Cloning sites used for ORF Shutting:



Plasmid Map:



ACCN: NM_001025426

ORF Size: 4590 bp

OTI Disclaimer: The molecular sequence of this clone aligns with the gene accession number as a point of reference only. However, individual transcript sequences of the same gene can differ through naturally occurring variations (e.g. polymorphisms), each with its own valid existence. This clone is substantially in agreement with the reference, but a complete review of all prevailing variants is recommended prior to use. [More info](#)

OTI Annotation: This clone was engineered to express the complete ORF with an expression tag. Expression varies depending on the nature of the gene.

Components: The ORF clone is ion-exchange column purified and shipped in a 2D barcoded Matrix tube containing 10ug of transfection-ready, dried plasmid DNA (reconstitute with 100 ul of water).

Reconstitution Method:

1. Centrifuge at 5,000xg for 5min.
2. Carefully open the tube and add 100ul of sterile water to dissolve the DNA.
3. Close the tube and incubate for 10 minutes at room temperature.
4. Briefly vortex the tube and then do a quick spin (less than 5000xg) to concentrate the liquid at the bottom.
5. Store the suspended plasmid at -20°C. The DNA is stable for at least one year from date of shipping when stored at -20°C.

RefSeq: [NM_001025426.2](#), [NP_001020597.1](#)

RefSeq Size: 8213 bp

RefSeq ORF: 4593 bp

Locus ID: 277854

Cytogenetics: 5 17.35 cM

Gene Summary: As a component of the GATOR1 complex functions as an inhibitor of the amino acid-sensing branch of the TORC1 pathway. The GATOR1 complex strongly increases GTP hydrolysis by RRAGA and RRAGB within RRAGC-containing heterodimers, thereby deactivating RRAGs, releasing mTORC1 from lysosomal surface and inhibiting mTORC1 signaling. The GATOR1 complex is negatively regulated by GATOR2 the other GATOR subcomplex in this amino acid-sensing branch of the TORC1 pathway.[UniProtKB/Swiss-Prot Function]