

Product datasheet for **MG212019**

Zfyve16 (NM_173392) Mouse Tagged ORF Clone

Product data:

Product Type: Expression Plasmids
Product Name: Zfyve16 (NM_173392) Mouse Tagged ORF Clone
Tag: TurboGFP
Symbol: Zfyve16
Synonyms: AI035632; B130024H06Rik; B130031L15; mKIAA0305
Mammalian Cell Selection: Neomycin
Vector: pCMV6-AC-GFP (PS100010)
E. coli Selection: Ampicillin (100 ug/mL)
ORF Nucleotide Sequence: >MG212019 representing NM_173392
 Red=Cloning site Blue=ORF Green=Tags(s)

TTTTGTAATACGACTCACTATAGGGCGGCCGGAATTCGTCGACTGGATCCGGTACCGAGGAGATCTGCC
 GCC**CGATCGCC**

ATGGACAGTTACTTTAAAGCAGCTGTCAGTGGCTTGGACAACTTCTTGATGATTTTGAGCAGAATCCAG
 ATAAGCAAGATTATCTCCAGATGCATATGCTTTAAACCAGTGCCTCAGTTTCTCAGAGTCGGCCTCTCC
 ACAGCTAGCTTTACTGTCAAAGGACCAAGATGCATCAGTACTTGTGCCTCATCAGAAGCATGCTGTGAA
 GATGCAAATGAGACTTTTCTTGAAGGAAAGATACACGAGGGCTTAACTCTAGACCGAATGAAAAAACG
 TAGCGGGACTTGATCTTCTTCTTCTGTGGATGCGAGTACTTCAGATGAGATCCAGCCTTCTGTATGAG
 ACGGTGTAGTAAGCCTGTCTGTGACCTGATAAGTGACATGGGTAACCTAGTGCATGCCACCAATAGTGAG
 GAAGACATTAAGCAGTTATTGCCAGATGACCCTAAGTCTTCTGCAGATACTTTGATCACATTGGACTCGT
 CTTTCAGTTTCAGAGGCTCTCACTGTCTCTTCAGTAGACTGTGGTAGTAATGCTGTGAGAGAAGAGCGAA
 TAACATCAACGCTGGTATAAAAAACAGAGATATTAGTATCAAAGAATTGGGTGTAAAAGTAGACATGGCA
 CTTTTTGATTCTTGTAATAATAAGAACAGAAAAATTAAGGATAAAATTTTCTAATGAGTTAGAAA
 CAGTTGATTTTGACATGCCATCTGTTTTGATGGAACAAAGTTCTGAAATGTCTAATACCAAAGATAACCC
 ACAATAACAAGAGGCTGCCATGTGAATTGTTAAAAGATGATGGCTGTTTGGCAGAAGAGAAAGTAGCTGTG
 GCAGTCAATAATACAGAGTGTTTAGAAGAAGGAGGAGGAAGTAACACAATTGCTATGCCTTGCAAGCTTC
 CAGAAAAATGAAGGATATCCCAAGTGACCCAGCTTCAAAGATGAAAAATTTCAAGTTACCTGACTTTCC
 CCTCCAGGAAAAATAGAACTTCTGTGTTTCATGAAACAGACTGTAAAAGAAGACTCAAGAAATTTAGACCTT
 AAAGATAATAATGATATAGTCCATGTTTCAGGTGATGATGTGCCCTTCACTGTCTGTCTTTCATTGT
 CTGGGTCTTTGTGGATCGTTAATTCACAATAATGAACACAGTATTTTTACCTCCTAATGAGTCTGA
 AGGCCAGAACAATGATGCAGTACTATACATGAAGAGATACAGAAGAGTATGTTTTAGATGGGGAGACA
 GATCTTTCAAAGAAGGAAACGTGTAGGAGCATATTTCTCAGCCAGTAAATGAAAAGAAAGGGGAGGGAA
 AGGTTGAGGTTGAGGAGATGGTAATCAGTGGTGTGCTTTGGAGTCCCCTGAGGACGCCAGCTCTGTCTG
 AGCAGCTGGGTCTCCGGTGGCCTTTCTGTGCAAGTGTCCAGAGGCTCCTGGTCCATGTGAAGTCTC



[View online »](#)

ACTTTTCCCAGCAGTGATATGGATGGGCAAGAGTTAGATTACTTTAATATTGATGAAAGCATGAGAAGTG
GCATACTAATTAGCGATGCTGAACTCGATGCTTTTCTGAAGGAACAGTGTCTTTCGAACTCTAACACAAT
GTCTGCTGGAGAAAAATGTAATGATTCCCGATTGCAGATGAATCAGATCACTATGAAAGGACTACATGAT
GAAATGCTGGGGATATATACTTCAATGCTGAAGCAGGAGCTGCTGGAGAAAAATGGAGGTGTTGGCAACT
GTGAAACAAGTGATAAAGAAAAACACAGAAAAATATGGTCTTCCATAGGAGAAAAAGGCGCAATTCCAAC
TGAAAGAGAGTTATCTGCCTGTACGCTGACATAAGGGATGAATGCCAGTCCCCAGTATTAACCCAA
GCTGTTGGAGGGGCTCGACCTAAGCAGCTGCTGAGTCTCCACCAGGAACAAGGAGTTCAAAGGAAGTGA
ATAAGCCAGATGTTGTGGATGTGCCAGAAAAGTGAGCCATGCACAGCAAATGCTACTGCTGTATCCACTTG
CTCTGCAGATCATATACCTGATTCTCAGGTTAGCTTCAACTCCAATTACATTGACATAGAAAAGTAATTTT
GAAGATGGATCCAGTTTTGTAAGTCAAACAAGGATTCTCTGCCTGAAAAAAGCGCAAAGAAAGCTTGG
TTTTGGCCAGAAAACCTACATGGGTTCTGATTGAGAAGCTCCAACTGTATGAACTGCCAAGTCAA
ATTCACCTTTACAAAACGGCGACACCCTGCCGAGCATGTGGAAAGGATTTTTGTGGTGTCTGTTGTAAC
AGGAAATGTAAGCTTCAGTATCTAGAGAAGGAAGCAAGAGTATGTGTAATCTGCTATGAGACTATAAATA
AAGCTCAGGCATTTGAAAGGATGATGAGTCCAGGTGGTCTTGTCTTAAGTCTAATCATTCTAATGAATG
TGCCACTGATCAGCCACTTCAGGAGACCCAAACATCCAGTACACCTTCACCTACAACCTTTGCCATCTCA
GCACTGAAACAACCAAATGTTGAAAGACCATGTTCCAAAGAACAGAAAGAGATGGTTTGCAGATGGCA
TACTGCCGAATGGTGAAGTTCAGATACTACGAAATTATCATCTGGAAGTAAAAGATGTTCTGATGACTT
TAGTCTGTCTTACCTGATGTGCCACAATGATAAATAAAGTGGATCGTACCCATTCTCCTACAGTGGAA
AAACCAACAATGGTTTTAGGAGACATTATAAGAAGTGAGATAAGCCAGAGTCCAAGTGTGATGACATGCAC
CTGTGGAAAGACTGCCGGGAACACAGGCACGGAAGGCTTGCCCATGCCTGGCCCTTTCACACTAGAAGA
TGATGTTTTGTGGACAGCGAGGAGCCGTCTACTCCTACTGTTGTCCCTGCTAATAGTGGTTTGCCTGTT
GCTAGCATTTCAGACTACAGGTTATTGTGAGTGTGCCAAATGTGTCTGCAACAACATTAGTCTTCTAC
CAGAGATGACATTGGTTTTGCCTCCCCTCTGGCCACATCTGGAGAAGATGGATCAGTCCCTGTTGTGCA
AGAACGTCCTCTCATGAGCAGATCATTCTTACTTCTTGAAGGGGAAGGATTTCTCCTGCTACATTTGTT
CTAAATGCAAACCTCCTGTGAATGTCAAGTTGGTGTCTTATTCTCAGAGAAGTATTGGTACTTCTCAA
CCAATGGATTGCATGGCTTGGGACAGGCAGAAATTATTGTCTGTGCAATGTTTGCCAAATGAGGATAC
GGTTCTAAGGACATCTCAGACTGTTCATCACCATATATAAGGATGCTTTAAAAGGAAAAATACATAGAA
AATTTGGACAATCTGACCTTTACTGAGAGTTTTCTCAACAGCAAGGATCATGGAGGTTCTGTTTATTA
CACCTACCTTCCAGAACCTTGATGGTCTCCCCGTGCCAAGGATCCTTTTCTCTGCGGCATTCTTATCCA
GAAGCTGGAGATCCCTGGGCAAAGTTTTCTATGCGGCTAATGTTGCGATTGGGAGCAGAATACAAA
GCATACCTGCTCCTCTAACAAGTGTGAGAGCCAGGAAACCTCTTTTTGGAGAAATAGGACATACTATTA
TGAACCTACTTGTGATCTTCGAAATTACCAGTATACATTGCATAACATCGATCAGCTATTGATTATAT
GGAAATGGGAAAAAGCTGTATAAAAATACCTCGAAAAAAGTACAGTGTGTAATGAAGGTAATACATTCC
TCTAACGAGCAGTGCATCAGTATTGGAGCTAGTTTTAGTACAGAAGCAGATTCTCATCTGGTCTGTGTAC
AGAGTGATGGAGTTATCAGACTCAGGCCAACAGTGCCACTGGTCCAGCAAGGAAAGTGACAGGTGCAAG
TTTTGTGGTGTAAATGGTGTCTGAAAACATCTCAGGATTTCTTGCCAAATCCAGCATAGTCGAAGAT
GGCTTAATGGTACAAATAACTCCAGAGACCATGGAGGGCTTGCGGCTGGCTTTACGAGAGCAAAGGACT
TTAGAATCCAGTGTGAAAAGTTGATGCGGTAGACCTGAGAGAGTATGTGGACATCTGTTGGTGGATT
AGAAGAGAGGAAGAACAAGGTGTTATCAGTTCAGTAGATGGAATGTCAGTGAAGGATTTCCAAGTGAA
AAAATAAACTGGAAACAGATTTTGAAACTGAGGAGAAGACTGTGAAATGCACTGAGGTGTTCTACTTCC
TAAAGGACCAAGATATATCTATTTTATCAAGTAGTTACCAGTTTGCAAAGGAGATTGCTGTGGCTGTAG
TGCTGCCCTGTGCCCTCACCTGAGAACTCTAAAGAGTAACAGAATGAACAAAATTGGACTCAGAGTGTCC
ATTGACTGATATGGTTGAGTTCAGGCAGGCTGTGAAGGCCAGCTTCTGCCTCAGCATTACCTGAATG
ATCTGGATAGTCCCTGATCCCTGTGATCCAGGCGGGACCTCCAACCTAGTCTGCCACTAGAAAATAGA
GTTAGCATTCTTCTAGAAAACCTTTCTGAG

ACGCGTACGCGGCCGCTCGAG - GFP Tag - GTTTAA

Protein Sequence: >MG212019 representing NM_173392
 Red=Cloning site Green=Tags(s)

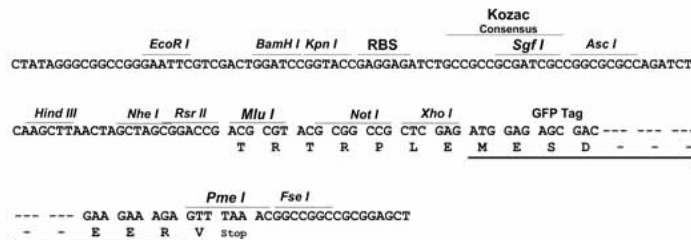
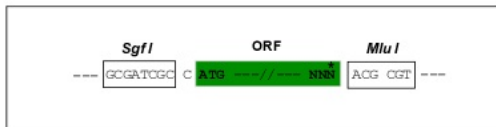
MDSYFKA AVSGLDKLLDDFEQNPDKQDYLPDAYAFNQCSVSSASASPQLALLSKDQRCISTCASSEACCE
 DANETFLEGGKIHEGLTSRPNEKNVAGLDLLSSVDASTSDEIQPSCMRRCSPVCDLISDMGNLVHATNSE
 EDIKQLLPDDPKSSADTLITLDSSSVSEALTVSSVDCGSNAVREEQNNINAGIKNRDISIKELGVKVDMA
 LFDSCCKYNRTENLKDKIISNELETVDVDFMPSVLMESSEMSNTKDNPPQYKRLPCELLKDDGCLAEKAVAV
 AVNNTCELEEGGSNTIAMPCKLPENEGISPSDPASKDENFKLPDFPLQENRTSVFMKQTVKEDSRNLDL
 KDNNDIVHVSDDVPPSLSCLSLSGSLCGSLIHNNEHSDILPPNESEGQNNDAVTIHEEIQKSDVLDGET
 DLSKKETCRSIFLQPVNEKKGEGKVEVEEMVISGESLESPEDASSAAAAGSPVALSAASVPEAPGPCEGL
 TFPSSDMDGQELDYFNIDESMRGILISDAELDAFLKEQCLSNSNTMSAGENVNDSQLQMNQITMKGLHD
 ENAGDIYFNAEAGAAGENGGVNCETSDKENTENGLSIGEKGAIPTEREL SACQPDIRDLPVPSIKTQ
 AVGGARPKQLLSLPPGTRSSKELNKPVDVDPSEPTANATAVSTCSADHIPDSQVFSNYSYIDIESNF
 EDGSSFTANKDSL PENKRKESLVLGQKQPTWVPDSEAPNCMNCQVKFTFTKRRHHCRACGKVFVCGVCCN
 RKCKLQYLEKEARVCVICYETINKAQAFERMMSPGGSCLSNHSNECATDQPLQETQTSSTPSPTLPI S
 ALKQPNVEGPCSKEQKRVWFADGILPNGEVADTTKLSGSKRCSDDFSPVLPDVTMINKVDRTHSPTVE
 KPNNGLDIIRSEISQSPTCHTAPVERLPGNTGTEGLPMPGPFTELEDDVFDSEEPSTPTVVPANGLPV
 ASI SDYRL LCSVAKVCVNNISLLPDDDIGLPPLLATSGEDGSVPVQERPSHEQIILLLEGEFGPPATFV
 L N ANLLVNVKLVLYSSEKYWFSTNGLHGLGQAEIIVLLQCLPNEDTVPKDIFRLFITIYKDALKGKYE
 NLDNLTFTESFLNSKDHGGFLFITPTFQNL DGLPVPRSPFLCGILIQKLEIPWAKVFPMLMLRLGAEYK
 AYPAPLTSVRGRKPLFGEIGHTIMNLLVDLRNYQYTLHNIDQLLIHMENKSKICKIPRKYSDVMKVIHS
 SNEHVISIGASFSTEADSHLVCVQSDGVYQTQANSATGQPRKVTGASVVFNGALKTSSGFLAKSSIVED
 GLMVQITPETMEGLRLALREKDFRIQCGKVDVLDREYVDICWVDSEERKNKGVISVDGMSVEGFPS
 KIKLETFETEETVKCTEVFYFLKQDQISILSSSYQFAKEIAVACSAALCPHLRTLKSNRMNKIIGLRVS
 IDTDMVEFQAGCEGQLLPQHYLNDLDSALIPVIHGGTSNSSLPLEIELAFFILENLSE

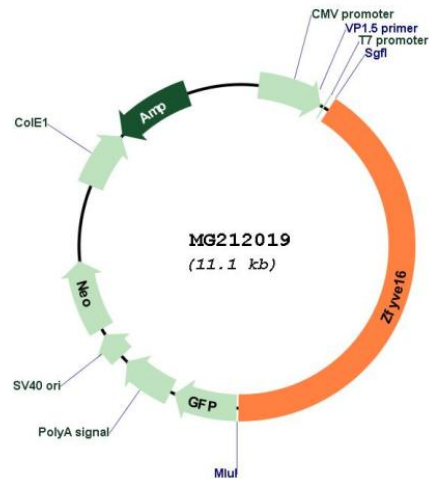
TRTRPLE - GFP Tag - V

Restriction Sites: SgfI-MluI

Cloning Scheme:

Cloning sites used for ORF Shutting:



Plasmid Map:


ACCN: NM_173392

ORF Size: 4584 bp

OTI Disclaimer: The molecular sequence of this clone aligns with the gene accession number as a point of reference only. However, individual transcript sequences of the same gene can differ through naturally occurring variations (e.g. polymorphisms), each with its own valid existence. This clone is substantially in agreement with the reference, but a complete review of all prevailing variants is recommended prior to use. [More info](#)

OTI Annotation: This clone was engineered to express the complete ORF with an expression tag. Expression varies depending on the nature of the gene.

Components: The ORF clone is ion-exchange column purified and shipped in a 2D barcoded Matrix tube containing 10ug of transfection-ready, dried plasmid DNA (reconstitute with 100 ul of water).

Reconstitution Method:

1. Centrifuge at 5,000xg for 5min.
2. Carefully open the tube and add 100ul of sterile water to dissolve the DNA.
3. Close the tube and incubate for 10 minutes at room temperature.
4. Briefly vortex the tube and then do a quick spin (less than 5000xg) to concentrate the liquid at the bottom.
5. Store the suspended plasmid at -20°C. The DNA is stable for at least one year from date of shipping when stored at -20°C.

RefSeq: [NM_173392.4](#), [NP_775568.1](#)

RefSeq Size: 5451 bp

RefSeq ORF: 4587 bp

Locus ID: 218441

UniProt ID: [Q80U44](#)

Cytogenetics: 13 C3

Gene Summary: May be involved in regulating membrane trafficking in the endosomal pathway. Overexpression induces endosome aggregation. Required to target TOM1 to endosomes (By similarity).[UniProtKB/Swiss-Prot Function]