

Product datasheet for **MG212011**

Col5a2 (NM_007737) Mouse Tagged ORF Clone

Product data:

Product Type:	Expression Plasmids
Product Name:	Col5a2 (NM_007737) Mouse Tagged ORF Clone
Tag:	TurboGFP
Symbol:	Col5a2
Synonyms:	1110014L14Rik
Mammalian Cell Selection:	Neomycin
Vector:	pCMV6-AC-GFP (PS100010)
E. coli Selection:	Ampicillin (100 ug/mL)
ORF Nucleotide Sequence:	>MG212011 representing NM_007737 Red=Cloning site Blue=ORF Green=Tags(s)

TTTTGTAATACGACTCACTATAGGGCGGCCGGAATTCGTCGACTGGATCCGGTACCGAGGAGATCTGCC
GCC**CGATCGCC**

ATGATGGCAAACGGGTGGGAGCAAGACCTCTCCTCATTCTTTCTGTTTTATTAGGGTACTGTGTCTCAA
TAAAAGCCAGGAACAAGAGAATGATGAATATGATGAAGAAATAGCCTGTACTCAACATGGACAGATGTA
TTTAAATAGAGACATTTGGAAACCTTCTCCATGTCAGATCTGTGTCTGTGACAATGGTGCCATTCTTTGT
GACAAGATAGAGTGCCCAGAGGTGCTCACTGTGCCAATCCTATAACACCCACTGGGAGTGCTGTCCGG
TGTGCCACAAACTGGAGGTGGAGATACTAGTTTTGGTAGAGGAAGAAAGGGACAAAAAGGAGAACCAGG
ATTAGTGCCTGTTGTAACAGGTATACGGGTCTGCCAGGACCTGCAGGCCCCAGGATCACAAGGACCA
AGAGGGGACCGAGGCCCTAAAGGAAGACCTGGTCTCGTGGTCTCAGGGAAATTGATGGAGAGCCAGGTG
TGCTTGGTCCAGCCAGGTGCTCCAGGGCCTCCTGGGCACCCCTCTCACCCAGGACCTGATGGCATGAGCAG
GCCTTTTTTCAGCTCAGATGGCTGGGCTGGATGAAAAATCTGGACTTGGAAAGTCAAGTAGGACTCATGCC
GGCTCTGTGGGTCTGTTGGCCCAAGAGGACCTCAGGGTTTACAAGGACAGCAAGGTGGTGTGGGACCCG
CAGGACCTCCTGGTGAGCCTGGCGAGCCTGGACCAATGGGTCCAATTGGTTCTCGTGACCAGAGGGCCC
ACCTGGGAAGCCCGGAGAAGATGGTGAACCTGGAAGAAATGGGAATACAGGTGAAGTGGGATTCTCAGGA
TCACCAGGTGCTCGAGGCTTCCCTGGTCTCCTGGTCTCCCTGGCTTGAAGGTACACAGAGGACACAAAG
GTCTTGAAGGCCCAAGGTGAAATTGGAGCACCTGGTGCTAAGGGTGAAGCTGGCCCCACTGGTCCAAT
GGGTGCTATGGGCCCTCTGGGACCAAGAGGAATGCCAGGAGAGGGGAAGACTTGGGCCACAGGTGCT
CCTGGAACCGGGGTGCCACGGTATGCCTGGAACCTGGACCAATGGGTCTCTTGGGATACCTGGCT
CTTCCGGTTTTCCAGGAAATCCTGGAATGAAGGGAGAAGCAGGTCTACTGGAGCCCAGGCCCTGAAGG
TCCTCAGGGCAGAGAGGTGAACTGGGCCACCTGGTCCAGCTGGCTCTCAGGGTCTTCTGGTGCAGTG
GGGACTGATGGTACACCTGGCGCCAAAGGCCACAGGCTCTGCAGGAACCTCTGGCCCTCTGGCTTG
CAGGGCCCTGGGTCTCCTGGCCCTCAAGGCAGTACTGGACCTCAGGGAATCCGAGGACAATCGGGTGA
TCCAGGAGTCCAGGTTCAAAGGAGAAGCTGGTCCAAGGGAGAACCAGGGCCACATGGTATTCAGGGT



[View online »](#)

CCCATTGGTCCACCTGGTGAAGAAGGCAAAAGAGGTCCTCGGGGTGATCCAGGCACAGTTGGTCTCCAG
GACCAATGGGAGAAAGGGGCGCTCCTGGCAATCGTGGTTTTCCAGGGTCTGATGGTTTACCTGGACCAAA
GGGTGCTCAGGGAGAGCGTGGTCTGTAGGTTCTTCGGGGCTAAAGGAGGCCAGGGAGATCCAGGACGT
CCAGGAGAACCTGGGCTTCCAGGTGCTCGGGTCTGACAGGAAATCCTGGTGTCAAGGTCTGAAGGAA
AACTTGGGCTTTGGGTGCTCCTGGGAAGATGGTCGGCCAGGTCCTCCAGGCTCCATTGGGATCAGAGG
ACAGCCTGGAAGCATGGGCGTCCAGGCCCAAAGGTAGCAGTGGTGACCTTGGAAAACCCAGGAGAAGCA
GGAAATGCTGGTGCCTGGGCAAGGGGGCTCCTGGCAAAGATGGAGAAGTTGGTCTTCAGGCCCTG
TGGGACCTCCGGGCTAGCTGGGAAAGAGGAGCAGGACCTCCAGGCCCACTGGCTTTCAGGGACT
TCTGGACCTCCAGGGCCACCTGGAGAAGTGGAAAGGCTGGTGTCAAGGTGTTCTGGAGAGCCTGGA
GCAGTTGGCCATTAGGACCTCGGGGAGAAAGAGGGAATCCTGGAGAAAGAGGAGAGCCAGGGATAACTG
GACTGCCTGGGGAGAAAGGCATGGCTGGAGGACATGGCCCTGATGGTCCAAGGGCAACCCAGGTCCAAC
TGGGACCATTGGAGACACAGGGCCACCAGGTCTTCAGGGCATGCCAGGAGAAAGAGGAATTGCAGGAACA
CCTGGCCCTAAGGGTGACCGAGGTGGCATAGGAGAGAAAGGTGCTGAAGGGACAGCAGGAAATGACGGG
CAAGGGGTCTTCAGGTCCCTTGGGACCTCCAGGTCTGCAGGCCCTACTGGAGAAAAGGGTGAACCTGG
TCCTAGAGGCTTAGTTGGCCCTCCTGGTCCCCTGGCAATCCTGGTTCTCGTGGTAAAAATGGTCCAAC
GGAGCTGTTGGTTTTGCTGGACCCAGGGTCCCAGTGGACAGCCTGGTGTCAAGGGTGGAGCTGGAGAGC
CAGGACAGAAGGGAGATGCTGGGTCTCCTGGACCCCAAGGGCTAGCAGGATCACCTGGCCCCATGGTCC
ACATGGTGTCTCCTGGACTGAAAGGCGGTAGAGGAACCCAGGGTCCACCTGGTGTACAGGATTTCTGGT
TCTGCTGGCAGAGTTGGGCTCCAGGCCCTGCTGGAGCTCCAGGACCTGCAGGGCCCGCAGGAGAACCTG
GGAAGGAAGGACCTCCTGGTCTTCGTGGTGACCCTGGCTCTCATGGGCGAGTGGGAGATAGAGGACCAGC
TGGCCACCTGGTAGCCAGGAGATAAAGGGGACCCAGGAGAAGACGGACAACCTGGTCCAGATGGTCTC
CCTGGTCCCCTGGTACCACTGGGCAAGAGGAATTGTTGGAATGCCCGACAACGTGGGAACGAGGAA
TGCTTGGCCTTCTGGCCAGCGGGTGCACCAGGAAAAGTAGGACCAACTGGTGGCAGAGAGATAAAGG
TCCCCCTGGACCTGTAGGACCTCCAGGTTCCAATGGTCCCTGTAGGAGAACCTGGGCCAGAAGGTCCGGCT
GGTAATGATGGTACCCAGGACGAGATGGTGTGTTGGAGAACGGGGTGACCGTGGAGACCCGGGCTG
CTGGTCTACCAGGCTCTCAGGGTCCCCCTGGAACCTCCTGGCCCTGTTGGTGGCCCTGGAGATGCAGGACA
AAGAGGAGAGCCAGGTTCTCGAGGCCCTGTAGGACCACCTGGTCGAGCTGGAAAGCGTGGTTTACCTGGA
CCACAAGGACCTCGAGGTGACAAGGGTGAATGGAGACAGAGGTGACCGAGGTCAGAAAGGCCACAGAG
GGTTCAGTGGCCTGCAGGGTCTTCTGGACCTCCTGGTCCAAATGGTGAACAAGGAAGTGTGGCATTCC
TGGTCTTTCGGTCCAAGAGTCTCAGGACCAGTAGGTCTTCAGGAAAGGAAGGAAACCTGGGCCA
CTTGACCAATTGGACCTCCTGGTGTGCGGGGAGTGTAGGAGAAGCAGGACCAGAGGGTCTCCTGGTG
AACCTGGGCTCCTGGCCCTCCAGGTCCCCTGGCCATCTTACTGCTGCTTGGTGATATCATGGGACA
CTATGATGAGAACATGCCAGATCCACTCCAGAGTTTACGGAAGACCAGGACGCTCCAGATGACACAAAAC
AAAACAGACCCTGGGATCCATGTTACCCTGAAGTCTCTCAGTAGTCAGATTGAAACCATGCGTAGCCCTG
ATGGTTCCAAGAAACACCCAGCCCGCACTTGTGATGATTTAAAGCTTTGCCATCCCACAAAGCAGAGCGG
TGAATATTGGATTGATCCTAACCAGGGATCAGCTGAAGATGCAATCAAAGTTTACTGCAATATGGAACA
GGAGAGACATGATTTCAACAAACCCAGCCAGTGTCCACGTAAAACCTGGTGGCCAGCAAATCCCCTG
ACAATAAGCCTGTGTGGTACGGTCTTGACATGAATAGAGGATCTCAGTTCACATATGGAGATTACCAGT
TCCTAACACAGCTATCACTCAGATGACCTTTTTGCGTCTTTTATCAAAAAGAACCTCGCAGAACCTTACT
TACATCTGTAGGAACACTGTTGGATATATGGATGATCAAGCTAAAAACCTCAAGAAAGCTGTGGTCTTA
AAGGGTCAAACGACTTAGAAATAAAGGAGAAGGAAACATCAGATTCAGATACACAGTCTTCAAGACAC
CTGCTCTAAGCGAAATGGAAATGTAGGCAAACTATCTTTGAATACAGAACACAGAAATGTGGCCCGCTG
CCCATCATAGATGTTGGTCTGTGGATATTGGCAATGCAGACCAGGAATTTGGCCTTGATATTGGCCAG
TTTGTTCATG

ACGCGTACGCGGCCGCTCGAG - GFP Tag - GTTTAA

Protein Sequence: >MG212011 representing NM_007737
 Red=Cloning site Green=Tags(s)

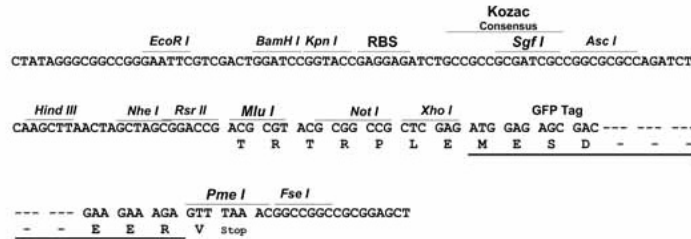
MMANWVGARPLLILSVLLGYCVSIKAQEENDEYDEEIACTQHGMYLNRDIWKPSPQCICVCDNGAILC
 DKIECEPVLNANPITPTGECCPVCPTGGGDTSFGRGRKGQKGEPEGLVPVVTGIRGRPGAPPPGSOQP
 RGDRGPKGRPGPRGPQGIDGEPVPGQPGAPGPPGHPGSHPGPDGMSRPFSAQMAGLDEKSLGSQVGLMP
 GSVGVPVGRGPQGLQGQGGVGPAGPPGEPGEPGMPGPIGSRGPEGPPGKPGEDGEPGRNGTGEVGFSG
 SPGARGFPAGPLPGLKGRHGHKLEGPKEIGAPGAKGEAGPTGPMGAMGLGPRGMPGERGRLGPQGA
 PGKRGAHGMPGKPGMPGLGIPGSSGFPNPGMKGEAGPTGARGPEGPQQRGETGPPGAGSQGLPGAV
 GTDGTGPAKGPSTGAGTSGPPGLAGPPGSPGPQGSTGPQGIHQSGDPGVPVGFKEAGKGEPPHGIQG
 PIGPPGEEGKRGRPDGPTVGPMPGERGAPGNRGPFGSDGLPGPKGAQGERGPVSSGPKGGQDGPGR
 PGEPLPGARLGTGNPGVQGPGLGAPGEDGRPGPPGSIIRGQPGSMGVPKPGSSGDLGKPGEA
 GNAGVPGQRGAPKDGVEVPSGVPGLAGERGEQPPGPTGFQGLPGPPGPPGEGGKAGDQGVGEPG
 AVGPLGRGERGNPGERGEPITGLPGEKGMAGGHGPDGPKGNPPTGTIGDTGPPGLQMPGERGIAGT
 PGPKGDRGGIGEKGAEGTAGNDGARGLPGPLGPPGAPPTGEKGEPPRGLVGPGRGNGPSRGENGPT
 GAVGFAGPQPDQPGVKGEPEPGQKGDAGSPGQGLAGSPGPHGPHVPLKGGRTGQPPGATGFPG
 SAGRVGPPGAPGAPGAPGAGEPKGEGPPLRGDPGSHGRVDRGPAGPPGSPGDKGDPGEDGQPGDGP
 PGAGTTGQRGIVGMPGQRGERGMPGLPGAPAGPKVGPATGATGDKGPPGVPVPPGNGPVGEPGEPGA
 GNDGTPGRDGAVERGDRDGPAGLPGSQGAPGTPGVPVAGDAGQGEPPGSRGVPVPPGRAGKRLPG
 PQGPRGDKDNGDRDRGQKGRHGFGLQGLPGPPGNQEQGSAGIPGPFGRGPPGVPVPSGKEGNP
 LGPIGPPGVRGSGEAGPEGPPGEPGPPGPPGPHLTAALGDMGHYDENMPDLPEDTEDQAAPDDTN
 KTDPGIHVTLKSLSSQIETMRSPDGSKKHPARTCDDLKCHPTKQSGEYWDPNQSAEDAIVKYNMGT
 GETCISTNPASVPRKTWASKSPDNKPVWYGLDMNRGSQFTYGDYQSPNTAITQMTFLRLLSKEASQMLT
 YICRNTVGYMDDQAKNLKAVVLKGSNDLEIKGEGNIRFRYTVLQDTCCKRNGNVGKTIFFEYRTQNVARL
 P.IIDVGPVDIGNADQEFGLDIGVCFM

TRTRPLE - GFP Tag - V

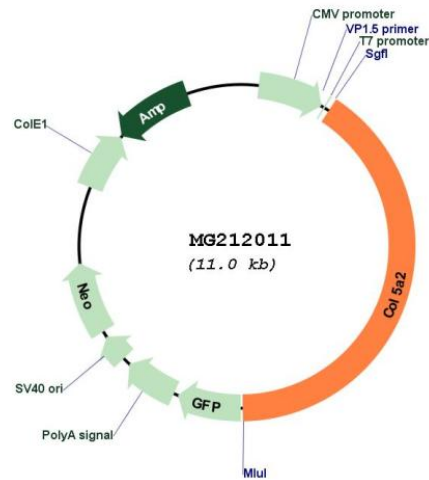
Restriction Sites: SgfI-MluI

Cloning Scheme:

Cloning sites used for ORF Shutting:



Plasmid Map:



ACCN: NM_007737

ORF Size: 4491 bp

OTI Disclaimer: The molecular sequence of this clone aligns with the gene accession number as a point of reference only. However, individual transcript sequences of the same gene can differ through naturally occurring variations (e.g. polymorphisms), each with its own valid existence. This clone is substantially in agreement with the reference, but a complete review of all prevailing variants is recommended prior to use. [More info](#)

OTI Annotation: This clone was engineered to express the complete ORF with an expression tag. Expression varies depending on the nature of the gene.

Components: The ORF clone is ion-exchange column purified and shipped in a 2D barcoded Matrix tube containing 10ug of transfection-ready, dried plasmid DNA (reconstitute with 100 ul of water).

Reconstitution Method:

1. Centrifuge at 5,000xg for 5min.
2. Carefully open the tube and add 100ul of sterile water to dissolve the DNA.
3. Close the tube and incubate for 10 minutes at room temperature.
4. Briefly vortex the tube and then do a quick spin (less than 5000xg) to concentrate the liquid at the bottom.
5. Store the suspended plasmid at -20°C. The DNA is stable for at least one year from date of shipping when stored at -20°C.

RefSeq: [NM_007737.2](#), [NP_031763.2](#)

RefSeq Size: 6615 bp

RefSeq ORF: 4494 bp

Locus ID: 12832

UniProt ID: [Q3U962](#)

Cytogenetics: 1 C1.1

Gene Summary: This gene encodes the alpha-2 subunit of type V collagen, one of the low abundance fibrillar collagens that gets incorporated into growing fibrils with type I collagen. The encoded protein, in association with alpha-1 and/or alpha-3 subunits, forms homo- or heterotrimeric type V procollagen that undergoes proteolytic processing. Mice lacking the encoded protein die in utero. Transgenic mice that produce a structurally abnormal form of the encoded protein survive poorly and exhibit skin fragility, skeletal abnormalities and alterations in the collagen fiber organization. [provided by RefSeq, Dec 2015]