

## Product datasheet for **MG212006**

### Aqr (NM\_009702) Mouse Tagged ORF Clone

#### Product data:

Product Type:	Expression Plasmids
Product Name:	Aqr (NM_009702) Mouse Tagged ORF Clone
Tag:	TurboGFP
Symbol:	Aqr
Synonyms:	AW495846; mKIAA0560
Mammalian Cell Selection:	Neomycin
Vector:	pCMV6-AC-GFP (PS100010)
E. coli Selection:	Ampicillin (100 ug/mL)
ORF Nucleotide Sequence:	>MG212006 representing NM_009702 Red=Cloning site Blue=ORF Green=Tags(s)

TTTTGTAATACGACTCACTATAGGGCGGCCGGAATTCGTCGACTGGATCCGGTACCGAGGAGATCTGCC  
GCC**CGATCGCC**

ATGGCGGCTCCTGCGCAGCCCAAGAAAATCGTGGCCCCACGGTGTCCAGATCAACGGGAGTTCGTCA  
CTCAGCTAGCATGTAATACTGGGCTCCTCATCAAGAAGAAATCACCGTTTGTATAAAAAGTAATTGA  
AGAAATATATGAAAAGAGATCGTCAAATCACGGTTTGCCATCAGGAAAATAATGCTGCTGGAATTTAGC  
CAATACCTTGAAAATTATCTTTGGATGAATTATCTCCGGAAGTTTCCAGCAAGGCTATTTAATGTCCA  
TCTGCTGTATGGTGAATGAGAAGTTCAGAGAAAATGTCCAGCCTGGGAGACCTTTAAGAAGAAACCAGA  
CCACTTCCCATTCTTTTTAAGTGATCTTGAAAGCGGCCTTAGCTGAGACTGACGGCGAGTTTCCCTC  
CAGCAGCAGACTGCTCCTGCTTTTCTGGATCACTGCTTCAATAGCTTGAAGTAGACTTGATAAGGA  
GTCAGGTGCAGCAGCTTATCTCGCTCCCGATGTGGATGGGCTTGCAGCCTGCACGATTGGAATTAGAATT  
GAAAAAGACACCAAAGCTAAGAAAATCTGGAACCTGATTAAGAAAGATGATGAAAAGATGGACCCAGAA  
GCAAGAGAGCAGGCTACCAAGAAAAGAGTTTCTCTCCCGGCTCATCCAGAAAGTTCATCTCCGTGTTGA  
AGTCCATCCCGCTTTCTGAGCCTGTCCCATGGACAAGGTTTACTGTGAAAGATTATCGAAGTGTG  
GTTCACTAGAGGCTCTACTCCCACGAGGCGCTGGTTTAAACACCATCTGGATGACTCCCACCTTCTG  
TGCTGAAGTTCTATACTGGCTTTGAGATTAACGACCAGACTGGAATGCTCTGACAGAGAACGAGATGAC  
CAGGATCACTATGACAGAATTACATCTCTGCAGAGGGTGCCTTCGCACACTTCCCGAGCTCTATGAC  
TTTGCCCTCTCCAATGTGGCAGAAGTAGATGCCGAGATTCTTGGTCAAGTTTTTTGGGCTCTCAGTT  
CAAACACACTCCACCAGGTGGCATCATACCTCTGCCTTTGCCAACGCTCCCTAAAAATGAAGACACAAC  
TTTTGATAAAGAGTTTCTTCTAGAATTGCTGGTGTCTCGCCACGAACGCCGATCTCTCAAATTCAGCAA  
CTGAATCAGATGCCTTTGTATCCAAGTGAAGAAATATATGGGATGAGAACATCGTCCCTACTGAGTACT  
ATTCTGGGAAGGCTGCCTTGTCTCCCAAGTGAATCTGCAGTTTTTACTCTGCAGACTATCTCT  
GAGGAACCTCAATCTCTCCGCTTAGAGTCAACTACGAAATTAGACAAGACATCGAGGACAGTGCAGC



[View online >](#)

AGAATGAAGCCCTGGCAGTCTGAGTATGGTGGCGTAGTGTTCCGGTGGTTGGGCACGGATGGCCAGCCCA  
TTGTGGCTTTCACTGTAGTCGAGGTTGCCAAACCAACATCGGTGAAAACCTGGCCAAACCCGAGTTCGTGC  
AGATGTCACCATCAATCTGAATGTCAGAGACCACATCAAGGATGAGTGGGAAGGTCTTCGAAAGCACGAT  
GTATGCTTTTTAATTACTGTGCGTCCAACAAAACCTTACGGCACTAAGTTTGACAGGAGGAGACCTTTTA  
TTGAGCAAGTTGGTCTGGTGTACGTACAGGCTGTGAAATCCAGGCATGCTGGATGACAAAGGGCGAGT  
CATCGAAGACGGACCTGAACCCAGACCCAATCTTAGAGGAGAGTCAAGGACATTTTCGAGTATTTTGGAT  
CCAAACAGTATCAACAGGATATGACCAATACGATACAAAACGGAGCCGAAGATGGTATGACACTTTCA  
ATGTCATAATGAGGAGGAAACCGAAGGAGAATAACTTCAAGGCTGTGTTGGAGACGATTCCGGAATCTGAT  
GAATACTGACTGCGTGGTACCGACTGGCTGCATGACATCATTTTGGGCTATGGGACCCCAAGTAGTGCC  
CATTATTCAAAAAATGCCCAATCAGATTGCCACCCTGGATTTCAATGACACTTTTCTCCTTGAACATT  
TAAAGGCCAGCTTCTGGTCAATGTCAAAGTACTGTGAGTGACCCAGCACTCCAAATCCCCCTTT  
CAGAATAACGTTCCAGTAAGAAGTGGAAAGGGGAAGAAAAGAAAAGATGCAGACGGGAAGAAGATGAC  
ACAGAAGAAGCAAAGACCTTAATTGTGGAGCCTCATGTTATTCTAATAGAGGCCCTTATCCTTACAACC  
AGCCAAACGTAATAACAATCCAGTTCATCATAACAGATAGAGGCCATCCGGGCCGAATGCAGCCTGG  
ACTCACCATGGTGTGGGCCACCTGGTACAGGAAAAACAGATGTTGCAGTCCAGATCATATCCAACATT  
TACCACAATTTCCAGAACAGAGGACTTTAATTGTTACTCATTCCAATCAGGCTCTGAACAGCTGTTTG  
AGAAAATCATGGCTTTAGACATTGATGAGCGCCATCTCCTGCGTCTGGGTGATGGAGAAGAAGAGCTAGA  
GACAGAGAAAAGACTTTAGCAGGTATGGAAGAGTTAATTATGTCCTAGCTCGAAGAATAGAACTTTTAGAA  
GAAGTCAAACGGTTACAAAAGAGTCTGGGGGTTCCCGGAGATGCTTCGTATACCTGTGAAACTGCCGGCT  
ATTTCTTCTTATATCAGGTGATGTCCCGCTGGGAAGAATACATGAGCAGAGTGAAGAAGTCCGGGACTGC  
CTGCCCGACGCTGCCCGGACGCTGCACAGGTCGCCACGTTCTTCCCTTCCATGAGTATTTTGCCAAAT  
GCTCCTCAGCCCATCTTTAAAGGCAGATCTTATGAGGAAGACATGGAAATCGTGAAGGGTGTCTCAGGC  
ACATTAAGAAAACTTCCACCCAACCTTGAGGAGTTCAGAGCCTCGGAGCTGCTTCGAGTGGACTGGACAG  
ATCCAAAATACCTTTGGTAAAAGAAGCCAAAATCATCGCTATGACATGTACTCATGCTGCCTTGAACGA  
CACGACTTGGTCAAGTTGGGTTTCAAGTATGACAACATTTTAAATGGAAGAGGCTGCTCAGATTCTGGAGA  
TCGAAACCTTTATCCCTCTACTTCTGCAGAATCCTCAAGACGGATTGAGCCGATTGAAACGGTGGATTAT  
GATTGGCGATCACCACCAATTGCCTCCAGTCAATTAAGAACATGGCCTTTCAGAAGTATTCGAACATGGAG  
CAGTCTCTTTCACTCGCTTCGTCCGGTTGGAGTTCCTACTGTGGACCTTGATGCTCAAGGAGAGCCA  
GGGCAAGCTTGTGAACCTTACAACCTGCGCTACAAAACCTAGGGAATTTGCCCATGTGCAGCTCCT  
GCCAGAGTTCAGCACAGCAACGCGGCCTGCTGTATGACTTCCAGCTCATCAACGTGGAAGACTTTCAG  
GGCGTGGGAGAGTCGGAGCCTAACCTTACTTCTACCAGAACCTTGGAGAGGCAGAGTATGTAGTGGCGC  
TCTTCATGTACATGTGCTTGGTTACCCTGCAGACAAGATCAGTATTCTAACAACTACAATGGACA  
GAAGCATCTGATTCCGGACATCATCAATAGGCGCTGTGGGAATAATCCACTGATTGGAAGGCCAAACAAA  
GTGACAACAGTTGACAGATTCCAGGGTCAGCAGAACGATTATATCCTCCTTTCGCTAGTGGCAGCAGGG  
CTGTGGGTGATCTGAGGGATGTGCGTTCGTTGGTGGTAGCCATGTCAAGAGCCAGGCTTGGCCTTACAT  
CTTCGCTCGAGTGTCCCTCTTCCAGAATGCTTTGAACTGACTCCTGCTTTCAGCCAGCTCACTGCCCGC  
CCACTGCATTTGCATATCATTCCAACAGAACCTTCCCAACCTCCAGAAAGAATGGAGAGAGACCACCTC  
ATGAAGTGCAGGTAATTAAGAACATGCCCCAGATGGCGAACTTTGTGTACAACATGTATATGCATCTGAT  
ACAGATACCCATCATTATCATCAGACTTCTTACAACCTGCCACCTGCCATGGTGAAGAAGGTGAGGAA  
GGTCAGAGCCAAGAAACAGAAATGGAAGCAGAAGAAGAACCCTGTCTGCTCAAGGTAACCTCACACCCA  
GTCCAGCGGATGCCAGCCTGAGTCAAGAGACCCAGCCGCTCAGCCTGACTGCTCCAGTCAAGACAGAAGA  
CACCTCTGCCCGTGTGACATTGCTACTGCAGCTGAGCCTGTCTCTGCAGCAGCAGAAGCTGCCACCCCA  
CAAGATGCAGAGTCTGTCCACAGAGACCGAG

ACGCGTACGCGGCCGCTCGAG - GFP Tag - GTTTAA

Protein Sequence: >MG212006 representing NM\_009702  
 Red=Cloning site Green=Tags(s)

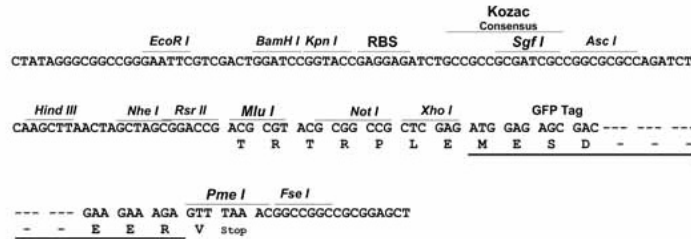
MAAPAQPKKIVAPTVSQINAEFVTQLACKYWAPHIKKSPFDIKVIEEIEKEIVKSRFAIRKIMLLEFS  
 QYLENYLWMNYSPEVSSKAYLMSICCMVNEKFRENVPAWETFKKKPDHFPFFFKCILKAALAEADGEFSL  
 HEQTLLELFLDHCFNLSLEVDLIRSQVQQLISLPMWMLQPARELELEKTPKLRKFWNLIKKNDKMDPE  
 AREQAYQERRFLSRLIQKFI SVLKSIPLSEPVMTDKVHYCERFIELMIDLEALLPTRRFNTILDDSHLL  
 VHCYLSSLVHREEDGHLFSQLLDMLKFYTGFEINDQTGNALTENEMTTIHYDRITSLQRAAFHFPELYD  
 FALSNVAEVDARDSL VKFFGPLSSNTLHQVASYLCLLPTLPKNEDTTFDKEFLLELLVSRHERRISQIQQ  
 LNQMPLYPTEKIIWDENIVPTEYSSGEGCLALPKLNLQFLTLHDYLLRNFNLFRELESTYIEIRQDIEDSVS  
 RMKPWQSEYGGVVF GGWARMAQPIVAFTVVEVAKPNIGENWPTRVRADVTINLNVRDHKDEWEGLRKHD  
 VCFLITVRPTKPYGTFKDRRRPPIEQVGLVYVVGCEIQGMLDDKGRVIEDGPEPRPNLREGSRTFRVFLD  
 PNQYQQDMTNTIQNGAEDVYDTFNVIMRRKPKENNFKAVLETIRNLMNTDCVVPDWLHDIILGYGDPSSA  
 HYSKMPNQIATLDFNDTFLSIEHLKASFPGHNVKVTVSDPALQIPPFRTFPVRSKGGKRRKDDADGEEDD  
 TEEAKTLIVEPHVIPNRPYPYNQPKRNTIQFHTHTQIEAIRAGMQPGLTMVVGPPGTGKTDVAVQIISNI  
 YHNFPEQRTLIVTHSNQALNQLFEKIMALDIDERHLLRLGHGEEETEEDKDFSRVGRVNYVLARRIELLE  
 EVKRLQKSLGVPGDASYTCETAGYFFLYQVMSRWEEYMSRVKNSGTACPDAAQVATFFPFHEYFAN  
 APQPIFKGRSYEEDMIEAEGCFRHIKKIFTQLEEFRASELLRSGLDKSKYLLVKEAKIIAMTCTHAALKR  
 HDLVKLGFKYDNILMEEAAQILEIETFIPLLLQNPQDGF SRLKRWIMIGDHHQLPPVIKNMAFQKYSNME  
 QSLFTRFVRVGVPTVDLDAQGRARASLNLNWRVYKNLGNLPHVQLLPEFSTANAGLLYDFQLINVEDFQ  
 GVGSEPNPYFYQNLGEAEYVVALFMYMCLLGPADKISILTTYNGQKHLIRDIINRRCGNNPLIGRPNK  
 VTTVDRFQGGQNDYILLSLVRTRAVGHLRDVRRLLVAMSRARLGLYIFARVSLFQNCFELTPAFSQTAR  
 PLHLHIIPTEPFPTSRKNGERPPHEVQVIKNMPQMANFVYNYMHLIQTTHHYHQTFQLPAMVEEGEE  
 GQSQETEMEAEEETVSAQGNLTPSPADASLSQETPAAQPCSSQTEDTSAPCDIATAAEPVSAAAEAATP  
 QDAESVPTETE

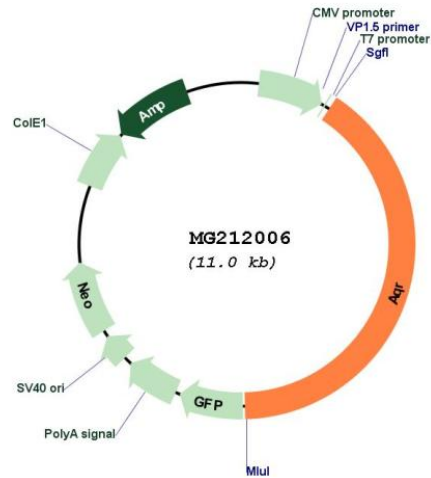
TRTRPLE - GFP Tag - V

Restriction Sites: SgfI-MluI

Cloning Scheme:

Cloning sites used for ORF Shutting:



**Plasmid Map:**


**ACCN:** NM\_009702

**ORF Size:** 4894 bp

**OTI Disclaimer:** The molecular sequence of this clone aligns with the gene accession number as a point of reference only. However, individual transcript sequences of the same gene can differ through naturally occurring variations (e.g. polymorphisms), each with its own valid existence. This clone is substantially in agreement with the reference, but a complete review of all prevailing variants is recommended prior to use. [More info](#)

**OTI Annotation:** This clone was engineered to express the complete ORF with an expression tag. Expression varies depending on the nature of the gene.

**Components:** The ORF clone is ion-exchange column purified and shipped in a 2D barcoded Matrix tube containing 10ug of transfection-ready, dried plasmid DNA (reconstitute with 100 ul of water).

<b>Reconstitution Method:</b>	<ol style="list-style-type: none"><li>1. Centrifuge at 5,000xg for 5min.</li><li>2. Carefully open the tube and add 100ul of sterile water to dissolve the DNA.</li><li>3. Close the tube and incubate for 10 minutes at room temperature.</li><li>4. Briefly vortex the tube and then do a quick spin (less than 5000xg) to concentrate the liquid at the bottom.</li><li>5. Store the suspended plasmid at -20°C. The DNA is stable for at least one year from date of shipping when stored at -20°C.</li></ol>
<b>RefSeq:</b>	<a href="#">NM_009702.3</a> , <a href="#">NP_033832.2</a>
<b>RefSeq Size:</b>	4900 bp
<b>RefSeq ORF:</b>	4446 bp
<b>Locus ID:</b>	11834
<b>UniProt ID:</b>	<a href="#">Q8CFQ3</a>
<b>Cytogenetics:</b>	2 57.57 cM
<b>Gene Summary:</b>	<p>Involved in pre-mRNA splicing as component of the spliceosome. Intron-binding spliceosomal protein required to link pre-mRNA splicing and snoRNP (small nucleolar ribonucleoprotein) biogenesis. Plays a key role in position-dependent assembly of intron-encoded box C/D small snoRNP, splicing being required for snoRNP assembly. May act by helping the folding of the snoRNA sequence. Binds to intron of pre-mRNAs in a sequence-independent manner, contacting the region between snoRNA and the branchpoint of introns (40 nucleotides upstream of the branchpoint) during the late stages of splicing. Has ATP-dependent RNA helicase activity and can unwind double-stranded RNA molecules with a 3' overhang (in vitro). [UniProtKB/Swiss-Prot Function]</p>