

Product datasheet for **MG211989**

Cpsf1 (BC056388) Mouse Tagged ORF Clone

Product data:

Product Type:	Expression Plasmids
Product Name:	Cpsf1 (BC056388) Mouse Tagged ORF Clone
Tag:	TurboGFP
Symbol:	Cpsf1
Mammalian Cell Selection:	Neomycin
Vector:	pCMV6-AC-GFP (PS100010)
E. coli Selection:	Ampicillin (100 ug/mL)
ORF Nucleotide Sequence:	>MG211989 representing BC056388 Red=Cloning site Blue=ORF Green=Tags(s)

TTTTGTAATACGACTCACTATAGGGCGGCCGGGAATTCGTCGACTGGATCCGGTACCGAGGAGATCTGCC
GCC**CGATCGCC**

ATGTACGCGGTGTACAAGCAGGCGCACCCGCCACCGGGCTGGAGTTTACCATGTACTGCAACTTCTTCA
ACAACAGTGAGCGCAACCTCGTGGTGGCCGGCACCTCGCAGCTCTATGTGTACCGCTGAACCGCGACGC
CGAGGCTCTGACCAAGAATGATGGGAGCACAGAGGGGAAGGCCACCGAGAGAACTAGAGCTGGTAGCC
TCCTTCTCTTTTTGGCAATGTCATGTCCATGGCCAGTGTGCAGCTTGCAGGCGCCAAACGTGATGCCT
TGCTTCTCAGTTTCAAAGACGCTAAGCTGTCTGTGGTGGAGTATGACCCAGGCACTCATGACCTGAAGAC
CCTGTCTCTACACTACTTTGAGGAGCCTGAACTTCGGGATGGGTTTGTGCAGAACGTGCATACGCCCTCGT
GTGCGGGTGGACCCTGACGGGCGCTGTGCAGCAATGCTCATCTATGGCACGAGGCTGGTAGTTCTGCCTT
TCCGCAGAGAGAGCCTGGCTGAGGAACATGAGGGGCTCATGGCGAAGGGCAGAGGTCTAGCTTCTTGCC
CAGCTACATCATTGATGTACGGGCTCTGGATGAGAACTACTCAACATCATTGACCTGCAGTTCTGCAT
GGCTACTATGAGCCACCCTGCTTATCCTGTTGAGCCCAACCAGACTTGGCCAGGGCGGGTGGCTGTGA
GGCAGGACACGTGCTCCATTGTGGCTATCTCGTGAACATCACACAGAAAGTCCATCCAGTCATCTGGTC
CCTCACCAGCTTGCCTTTTGACTGTACCAGGCCCTGGCTGTGCCAAGCCCATAGGTGGGTAGTGATC
TTCGCTGTCAACTCACTGTTGTACTGAACCAGAGTGTCCCCATATGGTGTGGCTCTCAATAGTCTCA
CCACAGGCACCACCGCTTCCCATTGCGTACCCAAGAGGGTGTACGGATCACCCCTAGACTGCGCACAGGC
GGCCTTCACTCTTATGACAAGATGGTCATCTCCCTCAAGGGTGGTGGAGTTTATGTGCTGACCCTCATC
ACTGACGGCATGCGAAGTGTCCGAGCGTTTCACTTTGACAAGGCAGCTGTAGTGTCTTACCACCAGTA
TGGTCACAATGGAGCCCGGATACCTGTTCTAGGCTCTCGCTGGGCAATTCCTCCTCCTCAAGTACAC
GGAGAAGCTGCAGGAGCCCCAGCCAGCTCCGTCCTGAGGCTGTGACAAGGAAGAGCCACCCTCAAAG
AAGAAGCGAGTGGAGCCTGCAGTGGGCTGGACAGGAGGCAAGACGGTGCCACAGGACGAGGTGGATGAAA
TTGAAGTTTATGGCAGTGAAGCCAGTCAAGGCACACAGCTGGCTACTTACTCTTTTGGAGTATGTGACAG
CATGCTCAACATTGGACCCTGTGCCAACGCTGCTGTGGGCGAGCCTGCCCTCCTCTGAAGAGTCCAG
AATAGCCCTGAGCCAGACTGGAGATTGTGTTTGTCCGGCTACGGGAAGAATGGGGCCCTGTCAGTGT
TGCAGAAGAGTATCCGGCCCCAGGTGGTACAACCTTTGAACTTCTGGCTGCTATGATATGTGGACAGT



[View online >](#)

CATTGCTCCTGTGCGAAAGAGGAGGAAGAAACCCCAAAGCAGAGAGCACAGAGCAGGAGCCAGTGCC
CCGAAAGCAGAGGAGGATGGGCGAAGACATGGCTTCTTATTCTTAGCCGGGAAGACTCAACCATGATCC
TACAGACTGGCCAGGAGATCATGGAGCTGGACACCAGTGGTTTTGCCACTCAGGGTCTACTGTCTTTGC
TGGAAACATTGGGGACAATCGTTACATTGTTCAAGTCTCGCCACTGGGCATTGCGCTGTTGGAAGGCGTG
AATCAATTGCACTTCATCCCTGTGGACCTGGGCGCCCCATCGTGCAGTGTGCCGTGGCTGATCCCTATG
TGGTTATCATGAGTGTGAGGGACACGTTACCATGTTCTACTCAAGAGCGATTCCCTATGGTGGCCGTC
TCACCGCTGGCACTACACAAGCCTCCACTGCATCATCAGTCCAAGGTGATTGCTCTGCTGTACCCG
GATGTGAGTGGCATGTTACCACCTGAGAGCCCGCTGGGTGGGGCCCGTGAAGTGGGTGGCCGAAGTG
GCTCCGAGGCAGAAGGCCTGGGCTCAGAAACGAGCCCCACAGTGGATGATGAGGAAGAGATGCTCTATGG
GGACTCCAGTGCCTCTTCAGTCCCAGCAAAGAGGAGGCCGTAGGAGCAGCCAGCCACCGGCTGATCGT
GACCTGCACCCTTAAGGCAGACCCCACTCACTGGTGCCTGCTGGTGGGGAGAATGGCACCATGGAGA
TCTACCAGCTCCCAGACTGGCGGCTGGTATTCTAGTTAAGAAGTCCCGTGGGGCAGCGGGTTCTGGT
GGACAGTTCATTTGGACAGCCCACTACACAAGGTGAAGTCCGAAAGGAAGAAGCCACAGCCAGGGGGAG
CTGCCCTTGGTTAAGGAGGTGTTGTTGGTTGCTCTGGAAAGCCGGCAGAGCAGGCCCTACCTGCTGGTAC
ACGTGGACCAGGAGTTGCTTATCTATGAAGCCTTCCCATGACTCTCAGCTTGGCCAGGAAATCTTAA
AGTCCGTTTTCAAAAAGGTCCCTACAATATCAACTTCCGTGAAAAGAAGCCAAAGCCGTCCAAGAAGAAG
GCCGAAGGTTGCAGCACTGAGGAGGGATCTGGAGGCCGGGGCCGTGTGGCACGTTTTCCGCTACTTTGAGG
ATATTTATGGCTATTCGGGGTTTTTCATCTGTGGACCCTCACCTCACTGGCTCCTGGTACTGGCCGCG
AGCTCTGCGTCTGCACCCATGGCATTGATGGCCCCATTGACTCCTTTGCTCCTTTCCACAATGTGAAC
TGCCCCGTGGTTTTCTGTACTTCAACAGACAGGGGGAGCTGAGGATCAGCGTCTGCCTGCCTACCTGT
CCTACGATGCCCCATGGCCTGTGAGGAAGTCCCACTCCGATGCACAGCCCACTATGTGGCTACCATGT
GGAATCCAAGTCTATGCTGTGGCCACTAGTACCAACACACCTTGCACTAGGATCCCACGATGACTGGC
GAGGAAAAGAATTGAGGCCATTGAGAGAGACGACAGATACATCCACCCCAAGCAAGAAGCCTTCTCCA
TCCAGCTCATCTCCCGTCAAGTGGGAGGCCATTCCCAATGCCAGGATCGAGCTAGAGGAATGGGAGCA
TGTACAGTGCATGAAGACAGTGTCACTGCGCAGTGAAGAGACCGTGTGAGGCCTAAAGGGCTATGTGGCT
GCTGGGACCTGCCTCATGCAGGGGGAGGAGTACGTGCCGTGGGCGGATCCTGATCATGGATGTGATTG
AAGTGGTGCCTGAGCCTGGGAGCCCTGACCAAGAACAATCAAGGTCTGTATGAGAAGGAGCAGAA
AGGGCCCGTACTGCGTGTGCCACTGCAATGGCACCTGGTGTGCGCCATTGGCCAAAAAATCTTCCTG
TGGAGCCTGCGGGCTAGCGAGCTGACCGGCATGGCCTTCATCGACACCCAGCTGTACATCCACCAGATGA
TCAGTGTCAAGAAGTTCATCCTGGCAGCAGACGTATGAAGAGCATCTCACTGCTGCGTTACCAAGAGGA
GAGCAAGACGCTGAGCCTGGTGTCCCGGATGCCAAGCCTTTGGAGGTATACAGCGTGGACTTCATGGT
GACAATGCCAACTGGGCTTCTTGGTGTCTGACCGAGACCGCAATCTTATGGTGTATATGTATCTGCCAG
AAGCCAAAGAGAGTTTTGGGGGCATGCGCTGCTACGCAGAGCGGATTTCCATGTGGGTGCCACGTGAA
TACGTTCTGGAGGACCCCGTGGCAGGTGCTGCCGAGGGCCCCAGCAAGAAGTCAAGTGTGGGAAAAAC
AAGCATATCACATGGTTTGAACCTTGACGGTGGCATTGGGCTCCTGCTGCCCATGCAAGAAAAGACAT
ACCGACGCTTGTGATGCTGCAGAAATGCACTGACGACCATGCTACCCACACGCTGGCCTCAACCCCGG
CGCCTTCCGAATGTTGCACGTAGACCGGCGCATTTGCAGAAATGCTGTGCGCAACGCTCTTATGGGGAA
CTGCTAAACCGCTACCTATACCTCAGCACCATGGAGCGCAGTGAAGTGGCCAAGAAGATAGGTACCACGC
CTGACATTATCTGGATGACTTGTGGAGACAGACCGGGTCACGGCTCACTTC

ACGCGTACGCGGGCCGCTCGAG – GFP Tag – GTTTAA

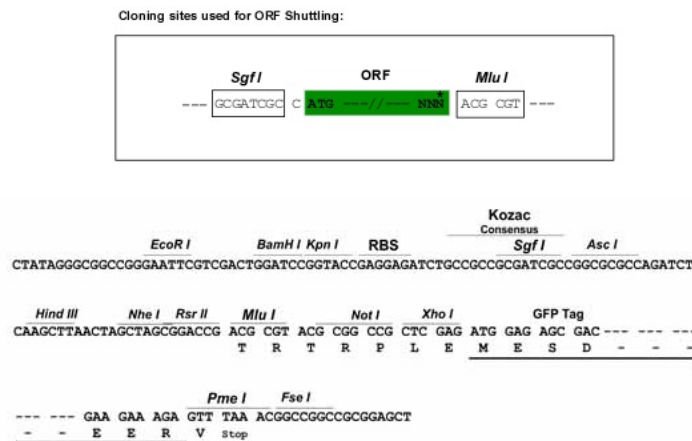
Protein Sequence: >MG211989 representing BC056388
 Red=Cloning site Green=Tags(s)

MYAVYKQAHPTGLEFTMYCNFFNSERNL VVAGTSQLYVYRLNRDAEALTKNDGSTEGKAHREKLELVA
 SF5FFGNVMSMASVQLAGAKRDALLSFKDAKLSVVEYDPGTHDLKTL SLHYFEEPELRDGFVQNVHTPR
 VRVDPDGRCAAML IYGTRLVVL PFRRESLAEHEGLMGEGRSSFLPSYI IDVRALDEKLLNIIDLQFLH
 GYYEPTLLILFEPNQTWPGRVAVRQDTC SIVAI SLNITQKVHPVIWSL TSLPFDCTQALAVPKPIGGVVI
 FAVNSLLYLNQSVPPYGVALNSL TTGTTAFPLRTQEGVRITLDCQAQAFISYDKMVISLKGGEIYVLTLI
 TDGMRSVRAFHFDKAAASVLTTSMTMEPGYFLGSR LGNSLLKYTEKLQEPASSVREAADKEEPPSK
 KKRVEPAVGWGTGKTPQDEVDEIEVYGSEASGTQLATYSFEVCD SMLNIGPCANAAVGEPAFLSEEFQ
 NSPEPDLEI VVCSGYGKNGALSVLQKSIRPQVVTFELPGCYDMWTVIAPVRKEEETPKAESTE QEPSA
 PKAEDGRRHGFLILSREDSTMILQTGQEIMELDTSGFATQGPTVFAGNIGDNRYIVQVSPLGIRLLEGV
 NQLHFIPVDLGAPIVQCAVADPYVVIMSAEGHVTMFLKSDSYGGRHRLALHKPPLHHQSKVIALCLYR
 DVSGMFTTESRLGGARDELGGRSGSEAEGLGSET SPTVDDEEEMLYGDSSALFSPSKEEARSSQPADR
 DPAPFKADPTHWCLLVRENGTMEIYQLPDWRLVFLVKNFPVQQRVLVDSSFGQPTTQGEVRKEEATRQGE
 LPLVKEVLLVALGSRQSRPYLLVHVDQELLIYEAFPHDSQLGQGNLKVRFKVKVPHNINFREKKPKPKSKK
 AEGCSTEEGSGGRVARFRYFEDIYGYSGVFCGSPHWLLVTGRGALRHPMGIDGPI DSAFPHNVN
 CPRGFLYFNQGE LRISVLPAYLSYDAPWPVRKIPLRCTAHYVAYHVESKYAVATSTNTPCTRIPRMTG
 EEKEFEA IERDDRYIHPQQEAFSIQLISPVSWEAIPNARIELEEHVTCMKTVSLRSEETV SGLKGYVA
 AGTCLMQGEEVTCRGRILIMDVIEVVPEPGQPLTKNKFVLYEKEQKGPVTALCHCNGHLSAIGQKIFL
 WSLRASELTGMAFIDTQLYI HQMISVKNFILAADV MKSISLLRYQEESKLSL VSRDAKPLEVYSVDFMV
 DNAQLGFLVSDRDRNLMVYMYLPEAKESFGGMRLRRADFHVGAHVNTFWRTPCRGAAEGSPKKS VVWEN
 KHITWFATLDGGIGLLLP MQEKT YRRLMLQNAL TMLPHHAGLNPRAFRMLHVDRRILQNAV RNVLDGE
 LLNRYLYLSTMERSELAKKIGTTPDIILDDLLETDRVTAHF

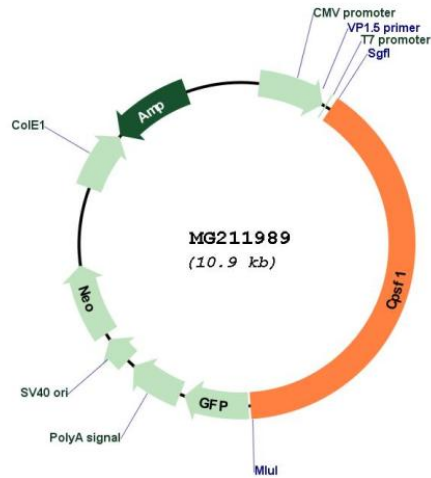
TRTRPLE - GFP Tag - V

Restriction Sites: SgfI-MluI

Cloning Scheme:



Plasmid Map:



ACCN: BC056388

ORF Size: 4325 bp

OTI Disclaimer: The molecular sequence of this clone aligns with the gene accession number as a point of reference only. However, individual transcript sequences of the same gene can differ through naturally occurring variations (e.g. polymorphisms), each with its own valid existence. This clone is substantially in agreement with the reference, but a complete review of all prevailing variants is recommended prior to use. [More info](#)

OTI Annotation: This clone was engineered to express the complete ORF with an expression tag. Expression varies depending on the nature of the gene.

Components: The ORF clone is ion-exchange column purified and shipped in a 2D barcoded Matrix tube containing 10ug of transfection-ready, dried plasmid DNA (reconstitute with 100 ul of water).

Reconstitution Method:

1. Centrifuge at 5,000xg for 5min.
2. Carefully open the tube and add 100ul of sterile water to dissolve the DNA.
3. Close the tube and incubate for 10 minutes at room temperature.
4. Briefly vortex the tube and then do a quick spin (less than 5000xg) to concentrate the liquid at the bottom.
5. Store the suspended plasmid at -20°C. The DNA is stable for at least one year from date of shipping when stored at -20°C.

RefSeq: [BC056388](#), [AAH56388](#)

RefSeq Size: 4538 bp

RefSeq ORF: 4325 bp

Locus ID: 94230

Cytogenetics: 15 D3

Gene Summary: Component of the cleavage and polyadenylation specificity factor (CPSF) complex that plays a key role in pre-mRNA 3'-end formation, recognizing the AAUAAA signal sequence and interacting with poly(A) polymerase and other factors to bring about cleavage and poly(A) addition. This subunit is involved in the RNA recognition step of the polyadenylation reaction (By similarity).[UniProtKB/Swiss-Prot Function]