

Product datasheet for **MG211974**

MIh3 (NM_175337) Mouse Tagged ORF Clone

Product data:

Product Type:	Expression Plasmids
Product Name:	MIh3 (NM_175337) Mouse Tagged ORF Clone
Tag:	TurboGFP
Symbol:	MIh3
Synonyms:	AV125803; BB126472
Mammalian Cell Selection:	Neomycin
Vector:	pCMV6-AC-GFP (PS100010)
E. coli Selection:	Ampicillin (100 ug/mL)
ORF Nucleotide Sequence:	>MG211974 representing NM_175337 Red=Cloning site Blue=ORF Green=Tags(s)

TTTTGTAATACGACTCACTATAGGGCGGCCGGAATTCGTCGACTGGATCCGGTACCGAGGAGATCTGCC
GCC**CGATCGCC**

ATGATCAGGTGTCTATCAGATGACGTAAAAACCAAGTTGCGTTCGGTTTAGCCATAAGCTCCTTGGGCC
AGTGTGTTGAAGAACTTACCCTAACAGTATTGATGCTGAAGCAACATGTGTGGCCATCAGAGTGAATAT
GGAAACCTTCCAAGTTCAAGTGATAGACAATGGACTTGGGATGGCGGGGACGATGTAGAGAAGGTGGGA
AACCGGTATTTACTAGTAAATGCCACTCAGTGGGGACTTGGAGAACCAGCATTATTTGGCTTCCGAG
GAGAGGCCTTGGCAAGTATAGCCGACATGGCTGGTGTGTGGAGATTTTCATCCAAGAAAAACACAACACT
GAAAACCTTTGTGAAAATGTTTCAGAATGGAAAAGCCCTTGCCACCCATGAGGCTGATTTGACCAGACCA
AGTGTGGGGACTACAGTAACGGTCTATAACCTGTTTTACAGTTTCTGTGCGGAGGAAAAGCATGGATC
CTAGACTAGAGTTTGAGAAAAGTTCGGCAGAGGGTAGAAGCTCTCTCACTTATGCACCCCTCCATTTCTTT
CTCTTTGAGGAACGATGTATCTGGATCCATGGTTCTTCAGCTCCCTAAAACCAAAGACATATGCTCTCGA
TTCTGTCAAATTTACGGATTGGGCAAGTCCAAAAGTTAAGAGAAATACGTTTTAAATACAAGGAATTTG
AGTTCAGTGGCTACATCAGCTCTGAAGCACACTACAATAAGAATATGCAGTTTTTGTGTTGTAACAGAAG
ACTAGTTTTAAGAACAAGTTGCATAAACTTATGACTTTTTATTAAGAAAAGAAAGCATTATATGCAGG
CCAAAGAATGGCTCTGCCAGTAGGCAAAATGAATCAAGTCTCGACCCGTTCTGCCTCAGAACTCCAGC
GGATATATGTAATCAATGTGCAGTGCCCTTTCTGTGAGTATGATGTCTGCATAGAGCCAGCCAAAACCTCT
GATTGAGTTTCAGAGCTGGGATACCGTGTGATTGATTGATTCAGGAAGGAGTAAAAAGTTTTTAAAGCAA
GAAAAATATTTGTAGAATTATCAGGTGAAGATATTAAGGAATTAATGAAGATAATGGTTTTAGTTGT
TTGGCAGGACTCTTCAGACACATGTGTCTACTCATGAGAAGTGTGACCAGAGCAGTTTCCGGGAAGCGTG
TAATAAAATCTGGATTCCTATGAAATGTTAATTTGAGTCAAAAGCTGTGAAAAGAATAGCTACTCTA
GAAAATAAAACCAGACAAAACCTGGTGATTTCAGAAACTATCAGAAAAAGACAGTGGGCTCATTGTACA
CAGATGCATCGGATGGCCGTGCTATAGTAAATCGGTAGAGTCTGTTTTACAGGACAGCAACAACAGTGC
TACTTAGAACCGAGGGTGCAGAAGAAGAGGTAGCCAAAACATCACACTCCGGAGAAAAAGAGAAATGG



[View online »](#)

AAAAATCTTTTTGGAAAAAAGACTTCAGGAAGGATACATGAAACCAGTCCAAAAATGTTTTCAAGCC
CCATCCAAATGCATCACCTCCTTGAGGAGAGAGAGGCAGATCTGGAAATGCAGACAATAAGTAGTACTGT
TAATGTCATGGCTGCCAACATCCCCAAAAATATGACATTCAGTCAACTGGAGAAATGGAAAGATGCT
CCTGAAGTGGGGTGCCAACTCTGCCTTTGAGACAACCTTATTAAGGGTACGGGGTACTCAGAGGAAGA
AGGAAAGAAGGAAAAAGGAGCCAGTAGTCGTGGAAGAGTAAATGTTTTAGTTATGGACAAGTTAAATT
ATGCTCCACTGGCTTTATAACTCATGTAGTACAAAGTGAACGCTAAATCAACTGAAACAGAACATTCA
TTTAAAAATTATGCTCGACCTGGTCTGTAAAGTGCCCAAGAAACATTTGGAAAAAGAACACACCATGCAA
TTGAGACTCCAGACAGCAGTGATTTAACAAAGCACTTTAAGTAAAGAATCCAGTCAACCGCCCAACAAAAG
GTTTTGCAGAACAATACAGGTTACGGGACAGAGAACAACCTGTAGCAACAGATGACAACCTGGCTCTT
TTTCAGGAAAGCTGTAAGAATCACACACAGATCGCCTTTGCCTGATGCATCCTCCTCCCATGGTGTA
GATATGTTCCGATGGTTGTAGGAAAAAGATAAAAAGGGTTCCTTCAAACAGGTAGTCCGTAGGAAGCT
AAGCTTGCCTTACAAGTAGGCTCTTAGAGAAGTTAAGAGGCAGTATGGGAAGGTGAGCAGTTCCTTA
GATACAGAAAAGGATAATAACTGAAGTCAGGACTCATCTTGATCCTCAAATGAACCCGATGTTCTTC
TGAAGACAAGAGCCACTTAGATATGTCTGATGGTTGTGAGATCACTACTGTGGAGCACAGTGAAGCTTG
TCAACCATTAAGTCCCATCTGTACCCAGAAAAATTTATTTTCCAAAGAAGATCGCTTAGAACAGATG
CCTCATTTGAGAGAAAGTCTATAACTCTGGAAGAATTATCTCACTGTAACAGAAAAGCTGATGTTGAGA
AGTCCGCTGCATCACTGGCTTCTAAATTATCCAACTAAAGGATTCTGAAAAAGAGATGCAACCCGTGGG
GATGACAGGTCATACTAGTGAACCTCCAGATTCAAATCCAGTTGGAAAGATAATAGCCAGTGCCTAGG
TTAGACTTGGATTTTGTGAATTATAAAAACAACTTGAAAAATAGAGAGTGATATGCTTCCATGG
CAGATTCTGCCACAGAGGATGGTCCCATCAATAAAAAACAGTGAACACCTCAACAATACAACGGATGA
CACAGAGAAACCAGAACTCCTTTGCTGTTCCCTGTAATGATTCTAAAAACAGCAGAGATTGATGTT
CTTATCAGAACTCAGAACAACCTACAGGAAACCTGACTCTGTCCGTAAGTGATAATGAGTCAAGTGA
AGGATGGCATTGGCAGCCAAGGTGGAGTCTGTCCCAAGGTGATGAATCTAAGGCAAGATCTTGTCCAA
AAATGAACCAAAACGCACACTGTATGGATTGGCAGCAGCATTTTGATGTAACCCCTGGGAAGAATGGTTTAC
ATCAACAGAATGACAGGACTTAGCACATTCGTTGCTCCAACCTGACGACCTTCATACTGCTTGTACTAAAG
ATCTGACAACCTGTGGCTGTGGATGCTGCTTGGGAATGATGCTGTGGATGCTGCTGCTGCTGCTGCTGCTG
TGAACCCCTTCAGTCTCTGTTTTCAGAATGGAGCAATCCAGTGTGCTCGATACCCAGAGGTTGCTGTT
GATGTCAGCAGTGGCCAGGCTGAGAGCTTAGCCGTTAAAATTCACAACGCTCCTGTATCCCTATCGCTTCA
CCAAAGAGATGATTCAGTCAAGGTTCTCCAGCAAGTGGATAACAAGTTTATTGCTGCTTAATGAG
CACGAGGATGGATGAGGATGGCCGAACAGGTGGAACCTGTTAGTCTGGTGGACCAGCATGCTGCCAT
GAACGCATTCGTTGGAGCAGCTTATTACTGATTCCTATGAGAAACAAGATCCACAAGCGCTGGCCGGA
AGAAATTATTGCTTCCACAATAATCCCTCCACTGGCAATCACCGTGTGAGAGGAAACAAAGGAGACTCTT
ACGGTCTTACCACAAACATTTAGAAGATCTGGGGCTTGAGTTGCTCTTCCAGATGCTAGTGATTCTCTG
ATCCTGGTGGGAAAAGTCCGCTCTGCTTTGTAGAGAGAGAAGCTAGTGAGCTTCGAAGAGGACGCTCTA
CTGTGACTAAGAGTATTGTGGAGGAATTAATTCGAGAACAAGTGGAGCTGCTCCAGACCACAGGAGGTAT
CCAAGGGACACTGCCACTGACTGTCCAGAAGGTGTTGGCTCCAGGCTGCCATGGGGCTATTAAGTTT
AATGATCGTCTGAGCCTAGAAGAGAGCTGCCGCTCATCGAAGCTCTGTCCTTGTCCAGCTGCCATTT
AGTGTGCTCATGGGAGACCCTCAATGCTGCCCTTAGCTGACCTGGACACTTGGAGCAGGAAAAACAGGT
TAAACCAACCTTGCTAACTTCGAAAAATGGTTCGTGCTGGCATCTCTTTGAAAAACAGAGCAGAAC
CTGCAGCAGCCTATACGTCTTGTGAGCCTCCA

ACGCGTACGCGGCCGCTCGAG – GFP Tag – GTTTAA

Protein Sequence: >MG211974 representing NM_175337
 Red=Cloning site Green=Tags(s)

MIRCLSDDVKTKLRSLAIISSLGQCVEELTLNSIDA EATCVAIRVNMETFQVQVIDNGLGMAGDDVEKVG
 NRYFTSKCHSVRDLENPAFYGFRGEALASIAMAGAVEISSKNTTLKTFVKMFQNGKALATHEADLTRP
 SVGTTVTVYNLFYQFPVRRKSMDPRLEFEKVRQVEALSLMHPSISFSLRNDVSGSMVLQLPKTKDICSR
 FCQIYGLGKSQKLREIRFKYKEFEFSGYISSEAHYKNMQFLVNRRLVLRTKLHKLIDFLLRKESIICR
 PKNGSASRQMNSSPRHRASELHGIYVINVQCPFCEYDVCIEPAKTLIEFQSWDTVLICIQEGVKRFLKQ
 EKL FVELSGEDIKEFNEDNGFSLFGTTLQTHVSTHEKCDQSSFREACNKILDSEYMFNLQSKAVKRIATL
 ENKTRQNPGDSEIRKKT VGS LYTDASDGP CYSKSVESVLQDSNNSAYLEPRVSEEEVAKTSHSGENEKW
 KKSFL ENKTSGR IHETSPKMFSSPIQMHHLL EEREADLEMQTISSTVNVMAANIPQNDIPSQLEKWKDA
 PEVGCQPLPFETLLRVRGTQRKKERRKKEPSSRGRVNVFSYGQVKLCSTGFITHVVQSEHAKSTETEHS
 FKNYARPGPVS AQETFGKRTHHAIETPDSSDLTSTLSKESQPPNKRFCRTNTGYGTENKPVATDDNLAL
 FQESCKESHTDRLLPDASSFPWCYVSDGCRKIDKRGFSKQVRRKLSLRQVGSLEKFKRQYGVSSSL
 DTEKDNNT EVRTHLDPQNEPDVLLKDKSHLDMSDGCEITTV EHS ETCQPLSPILYPEKILFSKEDRLEQM
 PHLRESPIITLEELSHCNRAKADVEKSAASLASKLSKLDSEKEMQTVGMTGHTSEL PDSNPSWKDNSQCTR
 LDLDFCELLKNKLEKIESDMLPMADSAT EDGPINKNSELHPNNTTDDTEKPE TPLLPFCNDSKISRSDSV
 LIRTSEQPTGNPDSVGVIMSQVEDGIGSQGGVCPQGDESKARSCSKNEPNAHCMQDWHDFVTLGRMVY
 INRMTGLSTFVAPTDDLHTACTKDLTTVAVDVLLGNDAVDA AAAAVSEPLQSLFSEWSNPVFARYPEVAV
 DVSSGQAESLAVKIHNVL YPYRFTKEMIHSV KVLQQVDNKFIACLMSTRMDEDGRTGGNLLVLDQHAH
 ERIRLEQLITDSYEKQDPQSAGRKLLSSTIIPLAITVSEEQRRLRSYHKHLEDLGLELLFPDASDSL
 ILVGVPLCFVEREASELRRGRSTVTKSIVEELIREQVELLQTTGGIQGLPLTVQKVLASQACHGAIKF
 NDRLSLEESCRLEALSLQLPFQCAHGRPSMLPLADLDHLEQEKQVKPNLAKLRKMVRAWHLFGKTEQN
 LQQPIR PCEPP

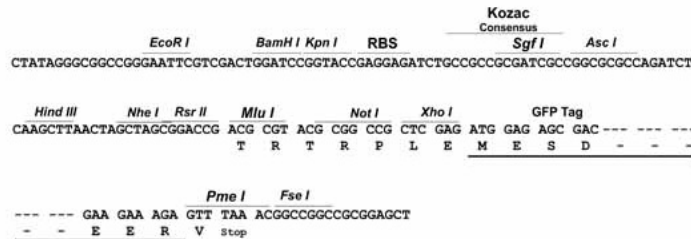
TRTRPLE - GFP Tag - V

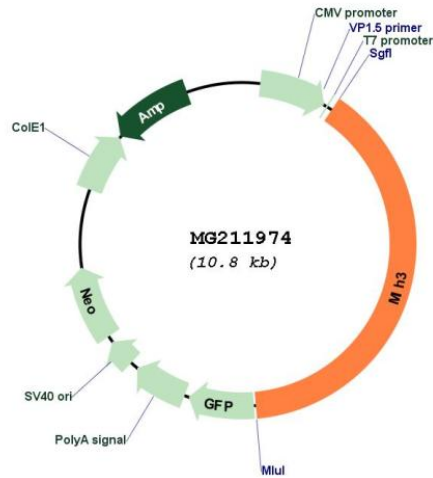
Restriction Sites:

SgfI-MluI

Cloning Scheme:

Cloning sites used for ORF Shutting:



Plasmid Map:


ACCN: NM_175337

ORF Size: 4233 bp

OTI Disclaimer: The molecular sequence of this clone aligns with the gene accession number as a point of reference only. However, individual transcript sequences of the same gene can differ through naturally occurring variations (e.g. polymorphisms), each with its own valid existence. This clone is substantially in agreement with the reference, but a complete review of all prevailing variants is recommended prior to use. [More info](#)

OTI Annotation: This clone was engineered to express the complete ORF with an expression tag. Expression varies depending on the nature of the gene.

Components: The ORF clone is ion-exchange column purified and shipped in a 2D barcoded Matrix tube containing 10ug of transfection-ready, dried plasmid DNA (reconstitute with 100 ul of water).

Reconstitution Method:

1. Centrifuge at 5,000xg for 5min.
2. Carefully open the tube and add 100ul of sterile water to dissolve the DNA.
3. Close the tube and incubate for 10 minutes at room temperature.
4. Briefly vortex the tube and then do a quick spin (less than 5000xg) to concentrate the liquid at the bottom.
5. Store the suspended plasmid at -20°C. The DNA is stable for at least one year from date of shipping when stored at -20°C.

RefSeq: [NM_175337.2](#), [NP_780546.1](#)

RefSeq Size: 5448 bp

RefSeq ORF: 4236 bp

Locus ID: 217716

Cytogenetics: 12 D1