

Product datasheet for **MG211966**

Wrn (NM_011721) Mouse Tagged ORF Clone

Product data:

Product Type:	Expression Plasmids
Product Name:	Wrn (NM_011721) Mouse Tagged ORF Clone
Tag:	TurboGFP
Symbol:	Wrn
Synonyms:	A1846146
Mammalian Cell Selection:	Neomycin
Vector:	pCMV6-AC-GFP (PS100010)
E. coli Selection:	Ampicillin (100 ug/mL)
ORF Nucleotide Sequence:	>MG211966 representing NM_011721 Red=Cloning site Blue=ORF Green=Tags(s)

TTTTGTAATACGACTCACTATAGGGCGGCCGGAATTCGTCGACTGGATCCGGTACCGAGGAGATCTGCC
GCC**CGATCGCC**

ATGGAACCACCTTCACTACAGCGGAAATTTCCAGAATGGATGTCTATGCAGAGTCAAAGATGTGCTACAG
AAGAAAAGGCCTGCGTTCAGAAGAGTGTCTTGAAGATAACCTCCCATTCTAGAATTCCTGGATCCAT
TGTTTACAGTTATGAAGCTAGTGATTGCTCCTCCTGTCTGAAGACATTAGCATGCGTCTGTCTGATGCC
GATGTGGTGGGATTTGACATGGAATGGCCGCCATATAACAAGCCAGGGAAAAGAAGCAGAGTCGCAGTGA
TCCAGTTGTGTGTCTGAGAGCAAATGTTACTGTTTACATTTCTCCATGTCAGTTTTCCCCAGGG
ATTAATAATGTTACTAGAAAACAAATCAATTAAGAAGGCAGGGGTTGGGATTGAAGGGGACCACTGGAAA
CTTCTGCGTGATTTTACAGTCAAGTTGGAGAGTTTTGTGGAGCTGACGGATGTTGCCAATGAAAAGTTGA
AGTGCGCAGAGACCTGGAGCCTCAATGGTCTGGTTAAACACGCTCTAGGGAAAACACTTTTAAAAGACAA
GTCCATCCGCTGCAGCAATTGGAGTAATTTCCCCTCACTGAGGACCAGAACTGTATGCAGCCACTGAT
GCTTATGCTGGTCTTATCATCTATCAAAAATTAGGAAATTTGGGTGATACTGCGCAAGTGTGCTCTAA
ATAAAGCAGAGGAAAACCTACCTCTGGAGATGAAGAAACAGTTGAATTCATCTCCAAGAAATGAGGGA
CCTAGCCAATCGTTTTCTGTCACTTGCAGAAATTTGAAAACCTCCAGAGGGTTCCTGTAATATTGAAG
AGTATTTTCAGAAAATCTCTGTTCAATTGAGAAAAGTGATCTGTGGTCTACAAACACTGAGACTGACTGA
AGCCGGGCAGTAGTTTTAATTTACTGTCACTCAGAGGATTCAGCTGCTGCTGGAGAAAAGAGAAAACAGAT
TGGAAAACATAGTACTTTTGTAAAATTAAGAAGAACCATGGGACCCAGAACTTGACAGTTTGTGAAG
CAAGAGGAGGTTGATGTATTTAGAAATCAAGTGAAGCAAGAAAAAGGTGAATCTGAAAATGAAAATAGAAG
ACAATCTGTTGAGAGAAGATATGAAAAGAACTTGTGTATTCTAGTATTTTCAGAAAATGAACTCCAAGA
TTTGAACAGCAAGCTAAAGAAGAAAAATATAATGATGTTTCTCACCAACTTTCTGAGCATTTATCTCCC
AATGATGATGAGAATGACTCCTCTATATAATTGAAAGTGATGAAGATTTGAAAATGGAGATGCTGAAGT
CTTTAGAAAACCTAAATAGTGACGTGGTGAACCCACTCACTCTACATGGTTGAAAATGGAAACCAATGG
CGCTTCTCTCTGAGGAGGAAGATGGACACGGAATGAAGCCATCAAAGAGGAGCAGGAAGAAGAGGAC



[View online »](#)

CATTTATTGCCGGAACCCAACGCAAGCAAATTAATTGCCTCAAGACCTATTTCCGACACAGCAGTTTTA
AACCGGTTTCAGTGGAAAGTCATCCATTCTGTATTAGAAGAGAGAAGATAATGTTGTTGCATGGCAAC
TGGATATGGGAAGAGTCTGTGCTTCCAGTATCCGCCTGTTTATACAGGCAAGATTGGCATTGTCAATTTCA
CCTCTCATTTCCTTAATGGAAGACCAAGTCCAGCTTGAGCTGTCCAATGTTCCAGCCTGTTTACTTG
GATCTGCACAGTCAAAAAATATTCTAGGAGATGTTAAATTAGGCAAAATAGGGTCATCTACATAACTCC
AGAGTTCTGTTCTGGTAACTTGGATCTACTCCAGCAACTTGACTCTAGTATTGGCATTCACTCTATTGCT
GTGGATGAGGCTCACTGCATTTCCAGATGGGGCCATGATTTCCAGAAGTTCATTCCAGATGCTGGGCTCTC
TTAAAACAGCGCTCCCATTTGGTTCCAGTATTGCACTCTCCGCTACTGCAAGCTCTCCATCCGGGAAGA
CATTATAAGCTGCTTAAACCTGAAAGACCTCAGATCACCTGCACTGGATTTGATCGGCCAAATCTGTAC
TTAGAAGTTGGACGGAACAGGGAACATCCTTCAGGATCTAAAGCCGTTTCTCGTCCGAAAGGCAAGTT
CTGCCTGGGAATTTGAAGTCCAACCATCATCTATTGCTTTCGAGAAAAATGACAGAACAAGTTACTGC
TGAACCTGGGAACTGAACCTAGCCTGCAGAACATACCACGCTGGCATGAAAATTAGCGAAAGGAAGGAC
GTTTCATCATAGGTTCTGAGAGATGAAATTCAGTGTGTTGTAGCTACTGTAGCTTTTGGAAATGGCATT
ATAAAGCTGACATTCGAAAGTTATTTCATTATGGTGCCTAAGGAAATGGAATCCTATTACCAGGAAAT
TGGTAGAGCTGGCCGGGATGGACTTCAGAGTTCCTGCTCACTTGTCTGGGCTCCAGCAGACTTTAACACA
TCCAGGAATCTCCTTATTGAGATTCACGATGAAAAGTTCCGGTTATATAAATTAAGATGATGGTAAAGA
TGGAAAAATACCTTCACTCCAGTCAAGTGTAGGCGACGAATCATCTTGTCCCATTTTGGAGACAAATGTCT
GCAGAAGGCCCTCCTTGGACATTATGGAACTGAAAATGCTGTGATAATTGCAGGCCCAGGCTGAATCAT
TGCCTTACTGCTAACACTCAGAGGACGCATCCCAAGACTTTGGGCCACAAGCATTCCAGCTACTGTCTG
CTGTGGACATCCTGCAGGAGAAATTTGGAATGGGATCCGATCTTATTTCTCCGAGGATCTAATTTCTCA
GCGTCTTCTGATAAATATCGGGTCCAGGCTCTTTGGTGTGGAAAGGAGCAAGCAGAAAAGTTGGTGG
AAGACCTTTCTCACCATCTCATAGCTGAAGGATCTTGGTAGAAGTTCCAAGGAAAACAAATATATAA
AGACATGTTCCCTCACAAAAAGGGTAGAAAGTGGCTGGAGAAGCCAGTTCGCAGTCTCCTCCGAGCCT
TCTCCTTCAAGCTAATGAAGAGATGTTTCCAAGGAAAGTTCTGCTACCAAGTTCTAATCCTGTATCTCCA
GAAACGACGCAACATTCTCTAATCAAAACCCAGCTGGATTAACCTACCAAGCAGTCTAATTTGGAGAGAA
CGCATTCTTACAAAGTGCCTGAGAAAGTTTCTTCTGGGACTAACATTCTAAAAAAGTGGCGTGTGCC
GTCACCAGGAACATCTTCCAGCCCTTAGAACCTGCCATCTCAGCCCAAGAGCTGGACGCTCGGACTGGG
CTATATGCCAGGCTGGTGAAGCAAGGCAGAAACAGCTAATAAGATGGATGTACCTCCAGCTATTTTAG
CAACAAACAAGGTTCTGCTGGACATGGCTAAAATGAGACCGACTACTGTTGAAAACATGAAACAGATCGA
CGGTGTCTCTGAAGGCAAAGCTGCTCTGTTGGCCCTCTGTTGGAAGTCATCAAACATTTCTGTCAAGTA
ACTAGTGTTCAGACAGACCTCCTTCCAGTGCCAAACCTCACAAGGAACAGGAGAAAAGTCAAGGATGG
AAAAGAAAGACTGCTCACTCCCCAGTCTGTGGCCGTACATACACTCTATTCCAGGAAAAGAAAATGCC
CTTACACAGCATAGCTGAGAACAGGCTCCTGCCTCTCACAGCAGCCGGCATGCACTTAGCCAGGCGGTG
AAAGCCGGCTACCCCTGGATATGGAGCGAGCTGGCCTGACCCCAAGAGACTTGGAAAGATTATTATGGATG
TCATCCGAAACCTCCCATCAACTCAGATATGTATAAAGTTAAACTCATCAGAATGTTAGTTCCTGAAAA
CTTAGACACGTACCTCATCCACATGGCGATTGAGATTCTCAGAGTGGTCCGACAGCAGAACCCAGCCT
CCTTGTGATTCCAGCAGGAAGAGGCGTTTCCCCAGCTCTCAGAGAGTGTGAGAGCTGTAAAGGAGAGCA
AAGAGGCGGTACCGAGACCAAGGCATCATCTTCAGAGTCAAAGAGAAAATACCCGAGTGGTTTGCCAA
AGGAAATGTGCCCTCAGCTGATACGGCAGCTCATCATCAATGGCCAAGACCAAAAAGAAAGTCTCTTT
AGT

ACGCGTACGCGGCCGCTCGAG - GFP Tag - GTTTAA

Protein Sequence: >MG211966 representing NM_011721
 Red=Cloning site Green=Tags(s)

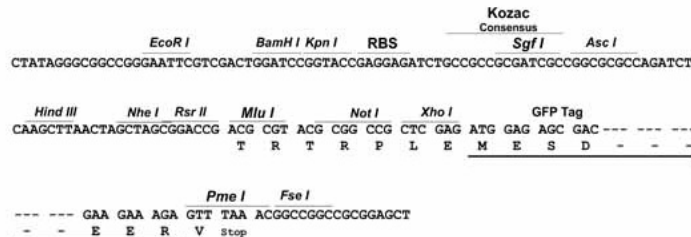
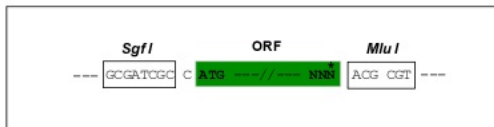
METTSLQRKFPPEWMSMQSQRCATEEKACVQKSVLEDNLPFLFPPGSIVVSYEASDCSFLSEDISMRLSDG
 DVVGFDMWPPPIYKPGKRSRVAVIQLCVSESKCYLFHISSMSVFPQGLKMLLENKSIKKAGVGIQDQWK
 LLRDFDVKLESFVELTDVANERLKAETWSLNLVGHVKGKQLLKDKSIRCSNWSNFPLTEDQKL YAATD
 AYAGLIIYQKLGNDGTAQVAFALNKAENLPLEMKKQLNSISEEMRDLANRFPVTCRNLETLQRVPVILK
 SISENLCSLRKVICGPTNTETRLKPGSSFNLLSSEDSAAAGEKEKQIGKHSTFAKIKKEEPWDPELDSLK
 QEEVDVFRNQVKQEKGESENEIEDNLLREDMERTCVIPSISENELQDLEQQAKEEYNDVSHQLSEHLS
 NDDENDSSYIIESDEDELEMEMLKSLLENLNSDVVEPTHSTWLEMGTNGLRPPPEEDGHGNEAIKEEQEED
 HLLPEPNAKQINCLKTYFGHSSFKPVQWKVIHVSLEERRDNVVMATGYGKSLCFQYPPVYTGKIGIVIS
 PLISLMEDQVLQLELSNVPACLLGSAQSKNILGDVKGKRVYIYTPEFCSGNLDLLQQLDSSIGITLIA
 VDEAHCISEWGHDFRSSFRLGSLKTALPLVPVIALSATASSIREDIISCLNLKDPQITCTGDFRPNLY
 LEVGRKTGNILQDLKPFVLRKASSAWFEGPTIIYCP SRKMTEQVTAELGKLNACRTHYAGMKISERKD
 VHRFLRDEIQCVVATVAFGMGINKADIRKVIHYGAPKEMESYQEIGRAGRDLQSSCHLLWAPADFNT
 SRNLLIEIHKDFRLYKLMVMKMEKYLHSSQCRRIILSHFEDKCLQKASLDIMGTEKCCDNCRPRLNH
 CLTANNSEDASQDFGPQAFQLLSAVDILQEKFGIGIPIFLRGSNSQRLPKYRGHRLFAGAKEAESWW
 KTLSHHLIAEGFLVEVPKENYIKTCSLTKKGRKWLGEASSQSPSLLLQANEEMFPRKVLPPSSNPVSP
 ETTQHSSNQNPAGLTTKQSNLERTHSYKVEKVSSTNIPKKSAYMPSGTSSSPLEPAISAQELDARTG
 LYARLVEARQKHANKMDVPPAILATNKVLLDMAKMRPTTVENMKQIDGVSEGAALLAPLLEVIKHFQV
 TSVQTDLLSSAKPHKEQEKSQEMEKKDCSLPQSVAVTYTLFQEKKMLPHSIAENRLLPLTAAGMHLAQAV
 KAGYPLDMERAGLTPETWKIIMDVIRNPPINSDMYKVKLIRMLVPENLDTYLIHMAIEILQSGSDSRTQP
 PCDSSRRRRFPSSAESCESCKESKEAVTETKASSSESKRKLPEWFAKGNVPSADTGSSSSMAKTKKKGLF
 S

TRTRPLE - GFP Tag - V

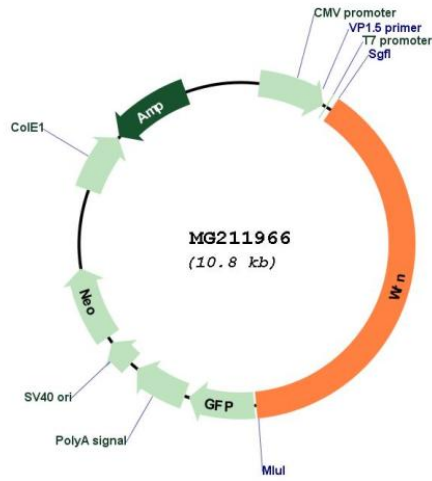
Restriction Sites: SgfI-MluI

Cloning Scheme:

Cloning sites used for ORF Shutting:



Plasmid Map:



ACCN: NM_011721
 ORF Size: 6380 bp

OTI Disclaimer:	<p>Due to the inherent nature of this plasmid, standard methods to replicate additional amounts of DNA in E. coli are highly likely to result in mutations and/or rearrangements. Therefore, OriGene does not guarantee the capability to replicate this plasmid DNA. Additional amounts of DNA can be purchased from OriGene with batch-specific, full-sequence verification at a reduced cost. Please contact our customer care team at custsupport@origene.com or by calling 301.340.3188 option 3 for pricing and delivery.</p> <p>The molecular sequence of this clone aligns with the gene accession number as a point of reference only. However, individual transcript sequences of the same gene can differ through naturally occurring variations (e.g. polymorphisms), each with its own valid existence. This clone is substantially in agreement with the reference, but a complete review of all prevailing variants is recommended prior to use. More info</p>
OTI Annotation:	<p>This clone was engineered to express the complete ORF with an expression tag. Expression varies depending on the nature of the gene.</p>
Components:	<p>The ORF clone is ion-exchange column purified and shipped in a 2D barcoded Matrix tube containing 10ug of transfection-ready, dried plasmid DNA (reconstitute with 100 ul of water).</p>
Reconstitution Method:	<ol style="list-style-type: none">1. Centrifuge at 5,000xg for 5min.2. Carefully open the tube and add 100ul of sterile water to dissolve the DNA.3. Close the tube and incubate for 10 minutes at room temperature.4. Briefly vortex the tube and then do a quick spin (less than 5000xg) to concentrate the liquid at the bottom.5. Store the suspended plasmid at -20°C. The DNA is stable for at least one year from date of shipping when stored at -20°C.
RefSeq:	<p>NM_011721.4, NP_035851.3</p>
RefSeq Size:	<p>6476 bp</p>
RefSeq ORF:	<p>4206 bp</p>
Locus ID:	<p>22427</p>
UniProt ID:	<p>O09053</p>
Cytogenetics:	<p>8 20.3 cM</p>
Gene Summary:	<p>Multifunctional enzyme that has both magnesium and ATP-dependent DNA-helicase activity and 3'->5' exonuclease activity towards double-stranded DNA with a 5'-overhang. Has no nuclease activity towards single-stranded DNA or blunt-ended double-stranded DNA. Binds preferentially to DNA substrates containing alternate secondary structures, such as replication forks and Holliday junctions. May play an important role in the dissociation of joint DNA molecules that can arise as products of homologous recombination, at stalled replication forks or during DNA repair. Alleviates stalling of DNA polymerases at the site of DNA lesions. Important for genomic integrity. Plays a role in the formation of DNA replication focal centers; stably associates with foci elements generating binding sites for RP-A (By similarity). Plays a role in double-strand break repair after gamma-irradiation (By similarity). [UniProtKB/Swiss-Prot Function]</p>