

## Product datasheet for **MG211949**

### Med23 (NM\_027347) Mouse Tagged ORF Clone

#### Product data:

Product Type:	Expression Plasmids
Product Name:	Med23 (NM_027347) Mouse Tagged ORF Clone
Tag:	TurboGFP
Symbol:	Med23
Synonyms:	130kDa; 3000002A17Rik; Crsp3; ESTM7; mKIAA1216; Sur2; X83317
Mammalian Cell Selection:	Neomycin
Vector:	pCMV6-AC-GFP (PS100010)
E. coli Selection:	Ampicillin (100 ug/mL)
ORF Nucleotide Sequence:	>MG211949 representing NM_027347 Red=Cloning site Blue=ORF Green=Tags(s)

TTTTGTAATACGACTCACTATAGGGCGGCCGGAATTCGTCGACTGGATCCGGTACCGAGGAGATCTGCC  
GCC**CGATCGCC**

ATGGTACCGATGGAGACGCAACTGCAGAGCATTTTCGAGGAGGTGGTAAAAACAGAAATTATAGAAGAGG  
CCTTCCCAGGAATGTTTATGGATACCCCGAGGATGAAAAACAAAATAATTAGCTGCTTGGCGCCTT  
CCGGCAGTTTTGGAGTGGACTTTCTCAGGAGTCTCATGAACAGTGTGTTTCAGTGGATTGTTAAATTTATT  
CATGGCCAACACAGCCCCAAAAGAATTTCTTCCCTCTATGACTGCTTAGCAATGGCAGTTGAGACTGGTC  
TCCTTCCACCCAGGATGGTTTGTGAATCTTTGATAAACTCTGACTCTCTTGAATGGGAAAGAACACAGCT  
TTGGGCCTTAACATTTAAGCTGGTTCGGAAAATCATTGGAGGAGTGGATTACAAGGGTGTTCGAGACCTT  
CTCAAAGCGATTTTGGAGAAAATCTTGACAATCCCAAATACAGTGAGCTCTGCTGTTGTCCAGCAGCTTC  
TGGCAGCAAGAGAGGTTATAGCTTATATCTTAGAACGAAATGCCTGCCTATTGCCGGCCTACTTTGCAGT  
CACAGAGATCAGAAAATAATCCTGAGGGAAAATCCACACTGGTTACTAGGAAAATTTGGTATCAGAC  
TTTGTGGATACCTTCAGGCCACAGCAAGGATTAATCCATTTGTGGCCGATGCAGTCTTCTGCCAGTTG  
TGAACAACTCGGGAGCCATCTGTAACCTCATGAAAATGGACCCTGCAACTCTGCGATTTCTTTGAAAGG  
CCTTTTCCATATGATAAGGATCTGTTTGAACCGCAGACTGCTTTGTTGAGATATGTACTGGCAACCT  
TATCCAGGGATATGGTCTGCAATATGCTAGGTTAAATAAGCAGCACAAGCAGCGTGCCTGTGCTGG  
AGGACCAGTTGGTGGACCTGGTGGTGTACGCCATGGAGAGGTGAGAGACCAGGAGAAAGTTTGACGATGG  
GGGAACCAAGCCAGCTCCTGTGGCAGCACCTTTCCAGCCAGCTCATTTTCTTTGTGCTTTTCCAGTTTGGC  
AGTTTCCACATATGGTCTCTCTCTCCACCAGAAGTTAGCAGGGCGAGGACTGATTAAGGGCGAGACC  
ATCTGATGTGGGTGCTGCTGCAGTTCAATTTCTGGAAGTATTCAGAAAAATGCCCTCGCTGACTTCTCCC  
TGTCATGAAGCTCTTTGACCTGCTGTACCCGGAGAAGGAGTGTATCCAGTTCCTGATATTAACAAACCC  
CAGTCAACGCACGCTTTGCAATGACTTGTATTTGGATTATCTTAATAGAAAAGCTCAAATGGCGACT  
CCACGCTCCAGATCCCAATACCCATTCCCTGAAGCTGCACCATGAGTTCCTCCAGCAGAGTCTGAGAAA  
TAAAAGCTTACAGATGAATGACTATAAGATTGCCCTGCTATGTAACCGATTCCACAAACTCAGAGTGT



[View online »](#)

TTTACGTTACCTATGGGAGCTCTGGTAGAACTATTTATGGAAATGGAATTATGAGAGTGCCTCTCCCTG  
GAACGAGCTGTTTGGCCTCAGCATCAGTGACTCCCTTACCGATGAACCTCCTGGATTCACTGACGGTGCA  
TGCCAAGATGAGCCTTATTCACAGCATTGCAACCAGAGTGATAAACTGGCTCATACGAAATCCAGTGTT  
GCGCTGGCTCCAGCCCTAGTGAAAACCTACAGCCGTTTACTGGTCTACATGGAAATTGAGTCTTTGGGCA  
TCAAAGGATTTATCAGTCAGCTCCTGCCACTGTCTTCAAGTCCCACGCCTGGGGCATCCTGCACACACT  
GCTGGAGATGTTGAGCCACCGAATGCACCACATTCAGCCCCACTACCGAGTTCAGTCTCTGAGCCATCTC  
CACACACTGGCTGCAGTGCACAGACCAACCAGAACCCAGTCCATCTGTGTGTGGAGAGCACTGCCTGA  
GGCTCATCACAGCCCTGGGAAGCTCAGAGGTCCAGCCGAGTTCACGCGTTTCTCAATGATCCCAAAC  
AGTGCTGTCCGCGAATCTGAAGAGCTGAACCGAGCCTTGATCCTGACCTTAGCCAGAGCAACCCACGTC  
ACAGATTTTTTTACAGGATCTGATTCAATACAGGGAACCTGGTGTAAAGATATCCTTCAGACCATCATGA  
ACTTTACTCCTCATAACTGGGCTTACATACCCTTAGCTGTTTTCCAGCCCTCTGCAGGCTTTCTTCAA  
GCAAATAACGTGCCAGGAAAGCCGTTTTAATCTGAAGAAGAATGTGGAAGAAGAGTACAGGAAGTGG  
AAGTCAATGACTGATGAAAACGAGATCATACCCAGTTCTCTGTGCAGGGCTTCCCTCCACTTCTCTCT  
GTCTCCTCTGGAAGATGCTCCTGGAGACGGATCATATTAGTCAGATCGGCTACAAGTCTCGAGAGGAT  
TGGGGCCAGGGCCCTGGTGGCCATGTGAGAACATTTGCAGATTTCTGGTGTATGAGTTCTCTACGTCA  
GCAGGAGTTCAGCAACTCAATAAGTGCATTGAAATTTCAACGACATGGTGTGGAAGTACAACATTTGCA  
CGCTGGACAGACTCATTCTGCCTGGCTATGCGTAGTCATGAAGGAAATGAAGCCAGGTTTGTATTT  
CATAATTCAGTTGCTGTTGCTCAAACCAATGACTTCAGAAACCGAGTAAGTGAATTTGTGAAGGAGAAT  
TCCCCAGAGCACTGGCTCCAGAGTGACTGGCACACCAAGCACATGAGCTACCACAAGAAATATCCCGAGA  
AGCTGTATTTGAAGGCCTGGCAGAGCAGGTTGACCCCTCTGTACCAATCCAGTCCCCTTATCTGCCAT  
CTACTTTGAAATGTGTGCTCCGGTTCCTTCCAGTATTTGATATAGTAATCCACAGGTTTTTAGAGTTG  
CTTCCAGTGTCAAATCACTAGAGACTCTCCTGGATCACCTAGGGGGCTTATAAATCCATGACCGGC  
CAGTGACTTATCTGTATAACTTTGCACTATTATGAAATGTGCCTGAGAAAACCGTACCATCTCAAACG  
AAAACCTTGTCCATGCAATCATTGGCTCCCTCAAAGATAACCGGCCACAGGGCTGGTGTCTCAGTGATACC  
TACCTGAAGCATGCTATGAATGCACGGGAGGACAACCCCTGGGTTCCGGAGGACTCCTACTACTGCAAGC  
TGATTGGCCGACTGGTAGACACCATGGCGGGCAAGTCTCCAGGACCCCTCCCAAACCTGTGACTGGAGATT  
CAATGAGTTTCCAAACCCGCTGCCACGCTCTGCATGTGACGTGTGGAACCTCATGGCCTTGGCGGTT  
CCAGGCAAAGATGTGGGAATGCCCTTCTCAATGTGCTCCTGAAAAGCCAGCCCTTAGTGCCAAGGGAGA  
ACATTACAGCGTGGATGAATGCAATTGGTCTGATCATCACGGCCCTCCAGAGCCGTAAGTGGATTGTGCT  
TCATGACCGAATTGTGAATGTGATCAGCAGTTCTAGCCTGACGTCAGAGACAGAGTGGGTCGTTACCCG  
TTCCGCTCTTCCACTTACCCTTGTACCAGTCTACTCGGAGATGAGCTGCAGCTATACGTTAGCTC  
TAGCCCATGCCGTGTGGCACCCTCCAGCATCGGGCAGCTCTCGTTATCCCAAAGTTTCTCACTGAGGC  
GTTTCTCCCGGTGGTGAAGACTGAGTTCAGTGTCTACGTGTACCATCTTGTGGGGCCATTTCTACAG  
AGGTTCCAACAGGAGAGAACCCGGTGCATGATTGAGATTGGCGTGGCATTATGACATGCTGTTGAATG  
TAGACCAGTGCAGCAGCACTTAAATTACATGGACCCATCTGCGACTTCTGTATCATATGAAGTATAT  
GTTTACTGGTGACAGTGTGAAAGAGCAAGTAGAGAAGATTATCTGTAATTTAAAGCCGGCTTTAAAGCTT  
CGTCTTCGATTCATCACGCACATTAGCAAGATGGAGCCGGCAGTGCCACCCAGGCCCTCAACAGCGGGT  
CTCCAGCACCTCAGTCTAACCAGGTGCCAGCATCTCTGCCGTGACTCAG

AGCGGACCGACGCGTACGCGGCCGCTCGAG - GFP Tag - GTTTAA

Protein Sequence: >MG211949 representing NM\_027347  
 Red=Cloning site Green=Tags(s)

MVPMETQLQSIFEEVVKTEIIEEAFFPGMFMDTPEDEKTKLISCLAARQFWSGLSQESHEQCQVQWIVKFI  
 HGQHSPKRISFLYDCLAMAVETGLLPPRMVCELSINSDSLEWERTQLWALTFKLVRKIIGGVYKGVDRDL  
 LKAILEKILTIPTVSSAVVQQLLAAREVIAYILERNACLIPAYFAVTEIRKLYPEGKLPHWLLGNLVSD  
 FVDTRPTARINICGRCSLLPVVNNSGAICNSWKLDPATLRFPLKGLLPYDKDLFEPQTALLRYVLEQP  
 YSRDMVCNMLGLNKQHKQRCPVLEDQLVDLVVYAMERSETEEFDDGGTSQLLWQHLSSQLIFFVLFQFA  
 SFPHMVLSLHQKLAGRGLIKGRDHLMWVLLQFISGSIQKNALADFLPVMKLFDLLYPEKECIPVDPDINKP  
 QSTHAFAMTCIWIHLNRKAQNGDSTLQIPIPHSLKLHHEFLQQLSRNKS LQMNDYKIALLCNAYSTNSEC  
 FTLPMGALVETIYNGIMRVPLPGTSCLASASVTPLPMNLLDSLTVHAKMSLIHSIATRVIKLAHTKSSV  
 ALAPALVETYSRLLVYMEIESLGIKGFISQLLPTVFKSHAWGILHTLLEMFSHRMHHIQPHYRVQLLSHL  
 HTLAAVAQTNQQLHLCVESTALRLITALGSSEVQPQFTRFLNDPKTVLSAESEELNRALILTLARATHV  
 TDDFTGSDSIQGTWCKDILQTIMNFTPHNASHTLSCFPAPLQAFFKQNNVPQESRFNLKKNVEEYRKW  
 KSMTDENEIITQFSVQGFPLFLCLLWKMLLETDHISQIGYKVLERIGARALVAHVRTFADFVYEFSTS  
 AGGQQLNKICIEILNDMVWYNIIVTLDRLLCLAMRSHEGNEAQVCYFIIQLLLLKPNDFRNRVSDFKEN  
 SPEHWLQSDWHTKMSYHKKYPEKLYFEGLAEQVDPVPIQSPYLPYFNVCLRFLPVFDIVIHRFLEL  
 LPVSKSLETLLDHLGGLYKFHDRPVTYLYNTLHYEMCLRNDRHLKRKLVAHAIIGSLKDNRPQGWCSDT  
 YLKHAMNAREDNWPVPESSYCKLIGRLVDTMAGKSPGPFNCDFRNEFPNAAHALHVTCVELMALAV  
 PGKDVGNALLNVVLSQPLVPRENITAWMNAIGLIITALPEPYWIVLHDIRVNVISSSSLTSETEWGYP  
 FRLFDFTACHQSYSEMSCSYTLALAHAVWHSSIGQLSLIPKFLTEALLPVVKTEFQLLVYVHLVGPFLQ  
 RFQQRTRCMIEIGVAFYDMLLNVDQCSTHLNMDPICDFLYHMKYMTGDSVKEQVEKIIICNLKPAKLR  
 LRFITHI SKMEPAVPPQALNSGSPAPQSNQVPASLPVTQ

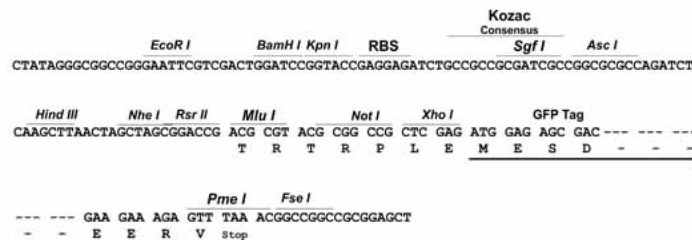
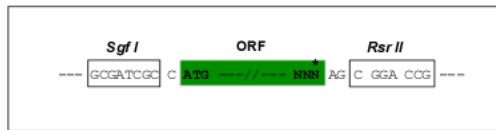
SGPTRRRLE - GFP Tag - V

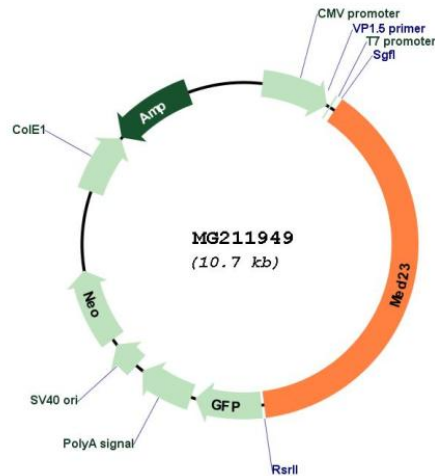
Restriction Sites:

SgfI-RsrII

Cloning Scheme:

Cloning sites used for ORF Shuttling:



**Plasmid Map:**


**ACCN:** NM\_027347

**ORF Size:** 4110 bp

**OTI Disclaimer:** The molecular sequence of this clone aligns with the gene accession number as a point of reference only. However, individual transcript sequences of the same gene can differ through naturally occurring variations (e.g. polymorphisms), each with its own valid existence. This clone is substantially in agreement with the reference, but a complete review of all prevailing variants is recommended prior to use. [More info](#)

**OTI Annotation:** This clone was engineered to express the complete ORF with an expression tag. Expression varies depending on the nature of the gene.

**Components:** The ORF clone is ion-exchange column purified and shipped in a 2D barcoded Matrix tube containing 10ug of transfection-ready, dried plasmid DNA (reconstitute with 100 ul of water).

**Reconstitution Method:**

1. Centrifuge at 5,000xg for 5min.
2. Carefully open the tube and add 100ul of sterile water to dissolve the DNA.
3. Close the tube and incubate for 10 minutes at room temperature.
4. Briefly vortex the tube and then do a quick spin (less than 5000xg) to concentrate the liquid at the bottom.
5. Store the suspended plasmid at -20°C. The DNA is stable for at least one year from date of shipping when stored at -20°C.

**RefSeq:** [NM\\_027347.3](#), [NP\\_081623.3](#)

**RefSeq Size:** 4928 bp

**RefSeq ORF:** 4113 bp

**Locus ID:** 70208

**UniProt ID:** [Q80YQ2](#)

**Cytogenetics:** 10

**Gene Summary:**

Component of the Mediator complex, a coactivator involved in the regulated transcription of nearly all RNA polymerase II-dependent genes. Mediator functions as a bridge to convey information from gene-specific regulatory proteins to the basal RNA polymerase II transcription machinery. Mediator is recruited to promoters by direct interactions with regulatory proteins and serves as a scaffold for the assembly of a functional pre-initiation complex with RNA polymerase II and the general transcription factors (By similarity). Also required for transcriptional activation subsequent to the assembly of the pre-initiation complex. Required for transcriptional activation by adenovirus E1A protein. Required for ELK1-dependent transcriptional activation in response to activated Ras signaling. [UniProtKB/Swiss-Prot Function]