

Product datasheet for **MG211941**

Synj2 (BC060214) Mouse Tagged ORF Clone

Product data:

Product Type:	Expression Plasmids
Product Name:	Synj2 (BC060214) Mouse Tagged ORF Clone
Tag:	TurboGFP
Symbol:	Synj2
Synonyms:	AI481647; mKIAA0348; SJ2
Mammalian Cell Selection:	Neomycin
Vector:	pCMV6-AC-GFP (PS100010)
E. coli Selection:	Ampicillin (100 ug/mL)
ORF Nucleotide Sequence:	>MG211941 representing BC060214 Red=Cloning site Blue=ORF Green=Tags(s)

TTTTGTAATACGACTCACTATAGGGCGGCCGGAATTCGTCGACTGGATCCGGTACCGAGGAGATCTGCC
GCC**CGATCGCC**

ATGTCAGTGGGCAGAATTCAGATGCAGAGATCTACAAAATCACTGCCACTGAGTTGTACCCCTGCAGG
AAGAGGCCAAGGAAGAGGACCGCTGCCACCTTAAAGAAAATCCTGAGCTCAGGGGTGTTCTATTTTCGC
ATGGCCAATGATGGCGCTGCTTCGATCTGACCATCAGGGCTCAGAAACAGGGTATGACGGCTCTGAA
TGGGGACCTCTTCTTCTGGAACAGCTATTGCATGTGCCTCTGCGGCAGCACCAGGTGAAGTGCATA
ACTGGTTGCTGAAAGTCATCTGTGGGTGGTGACCATCCGCACAGTATATGCCTCCACAAGCAGGCCAA
GGCTGTCTCATCTCTCGCATCAGCTGTGAACGGCAGGTGCTCGCTTCCACCCGTGGTGTGAACGAT
GATGGCCACGTGTCCAATTTGTGGAGACAGAGCAGACGATTTACATGGATGATGGAGTATCGTCTTTG
TCCAGATCCGAGGCTCCGTTCCGCTGTTCTGGGAGCAACCAGGACTTCAGGTTGGCTCCCATCATCTGAG
ACTGCACAGAGGCTAGAGGCCAACGCTCCTGCTTTTGAAGGCACATGGTGTCTTGAAGGAGCAATAC
GGTAAGCAGGTGGTTGTGAACCTGCTGGGTAGCAGAGGCGGTGAAGAGGTGCTCAACAGAGCCTTCAAGA
AGTTGCTCTGGGCTTCTTGCCACGCGGGTGACACACCTATGATAAATTTGACTTCCATCAGTTTGCCAA
AGGTAGGAAGCTAGAGAAATGGAGAACCTGTTGAGACCTCAGTTACAGCTACACTGGGAAGACTTCGGC
GTGTTTGCGAAGGGCGAGAATGTAAGTCCACGGTTTCAGAAAGGCACTCTGCGGATGAAGTGTCTCGAT
GTCTGGATAGAACCAACTGTGCAGTGCTTCATTGCTCTTGAGGTCCTTCATCTGCAGTTGAGAGCTT
GGGGCTAAATTCAAAGCCATCATTGACCGTTTTGTGGAGTCTTCAAAGCCATGTGGTCTCTGAATGGG
CACAGCTGAGCAAGGTGTTACAGGGAGCAGGGCCCTGGAAGGAAAGGCCAAGGTGGGAAAGCTGAAGG
ATGGGGCCCGATCCATGTCTCGACCATCCAGTCCAATCTTTCGACGGGTGAAGCAGGAGGCCATCAA
GCTACTGTAGTCGGAGATGTCTACAATGAAGAGTCTACAGACAAAGGACGGATGCTGCTGGACAACAGC
GCCCTTCTGGCGACCCCAAGGATCTTGAAGGCCATGACAGAACGCCAGTCGGAATTCACGAATTTCAAGC
GCATCCAGATTGCTGTGGGACCTGGAATGTGAACGGAGGAAAGCAATTCGATAGCAATCTCTGGGGAC
GGCTGAGCTCACGACTGGCTCCTAGATGCTCCTCAGCTGTCAGGAGCAGTGGACTCCAGGATGATGGC



[View online »](#)

AGTCCTGCTGACGTATTTGCCATCGGGTTTGAGGAGATGGTGGAAGTCTGAGTGCGGGAAATATTGTCAATG
CCAGCACCAACAGGAAGATGTGGGCGAGCAGCTTCAGAAAGCCATCTCCCGCTCCCATCGGTACAT
CCTTTGACCTCCGCACAGCTGGTGGGCGTCTGTCTTTACATCTTTGTACGTCCGTACCACGTCCCCTTC
ATCAGAGACGTGGCCATCGACACCGTGAAGACCGCATGGGGGAAAGCGGGGAATAAGGGTGTGTGG
GCATCCGCTTCCAGCTCCACAGCACCAGTTTCTGCTTCGTCTGTAGCCACCTGACGGCTGGGCGAGTCTCA
GGTGAAGGAGAGGAATGAAGACTACCGGAGATCAGCACAACCTCTCCTCCCTTCGGGGAGAAACATA
TTTTACATGATTACGTGTTTTGGTGTGGCGATTTCAACTACCGTATTGATCTTACTTACGAAGAAGTCT
TCTATTTTGTAAACGCCAAGACTGGAAGAACTTATGGAATTCGATCAGTTACAGTTACAGAAATCAAG
TGGAAAAATTTTTAAAGACTTTCATGAAGGAGCCGTTAACTTCGACCCACCTACAAGTATGACGTTGGA
TCAGCTGCCTACGACACAAGTGACAAGTGCCGTACCCAGCCTGGACAGACAGGGTGTGTGGTGGAGGA
AGAAGCATCCATATGATAAAACAGCTGGTGAACCTCAACCTTCTAGACAGCGATCTAGACGGCGATCCCCA
AATCAGACACACCTGGTCTCCAGGCACTCTGAAATACTACGGCCGTGCAGAGCTGCAGGCGTCTGATCAC
AGACCTGTGTGGCCATTGTGGAGGTGGAGTTCAAGAGGTGGATGTAGGAGCCCGGAGAGGGTCTTCC
AGGAAGTGTCTCTGTCCAAGGCCCGCTGGATGCCACCGTTGTTGTAACCTCCAGTCTCCAACCTAGA
AGAGAAAAATGAATTTCCAGAGGACCTGCGCACAGAATTATGCAGACTTGGGGAAATTATGGGACGATT
ATTCTAGTCAGGATCAACCAAGGCAGATGCTGGTGCAGTTTGCAGACAGCCACTCGGCTCTCAGTGTGC
TGGATGTGGATGGTATGAAGGTGAAAGGCAGGGCCGTGAAGATTCGACCAAGACCAAAGATTGGCTAGA
AGGCCTGAGAGAGGAGCTTCTCCGGAAGCGAGACAGCATGGCCCTGTGTCTCCACCGCCAACTCCTGC
TTGTTGGAGGAGAAGTTTACTTCTCGAGTCTGGACTATGAGTCCGAAGGGGATGTTCTTGAAGAGGATG
AAGACTATTTAGTGGATGGGTTTGGCCAGCCTGTAGTCTCAGACAGTGCAGTCCGTTGGAGACAACCTTC
CGACACCATGAGCTCCTTACACCCGCCAGCAAGTCTCCCGCCCTGGCTAAAAAGAAGCAACATCCAACA
TACAAAGCTGGCTAATGGTGAAGAAGTCAAGTCTCAGACGCGTCCATCTTCTGGCACTCATGGACAAT
ATTCATCTTGCAGACAGCGAACTTCTCCAGGAGCACCCAGCAACCCAAAGGCTAGAATGGAAT
AAGTAAACCTTACAACGTCAAACAGATCAAACACCAACGCTCAGGAGGCAGAAGCAGCTATCCGGTGT
CTCCTGGAAGCTAGCGGAGGGTCCCGGAATCAGCCCCAGGTGCCATACCCTGAGAAACCAAGGGTCTT
CTAAGCCAGAGGCCACCCTGGGGCCCCAGCCCTGCCCGCCGGCCTGCTCCAAGGGTCCCACTATGAA
GAAACCAACTTTGAGGAGGACAGGAAAGCCATGTTACCAGAAGAAAATTTGAGCCACAGCCTGTCCAT
TTTACAATGGCTTCCAGGAAATGAACCTTGGACCCCTCCTCAATAACAGTACTCCCATCCCGCCTG
TTCCAAACCAAGAACACTTCAGCCTGGGAAAGGTGTTGAGGGGAGGCCAAGCAGCGGTAGCCAGAACC
AGATGAAGCTCCTCCGTGACAGGCACTGTGGAGTCAACCTCCAGAGGCCAGGAGGCCCGTCTCTG
GCTCCCAAGGTGCTCCGAGGAGGAAGAAGTCTGCACCAGCGCCTTCCACTGCAGTCTGCAGAACA
ACAGCCAAAGTTCTCCAGGCTCAGTGTCCAGCAGTTCTCCACCTCACTGAAGCCCGACACCCACCC
GCTCTGTCTACAAGTGGCACTTGGCACTTCATCTGCCAGAAGCCCTGAAACCCATGGCCCCAGAGTGACA
GAGCCCGAGGCGGCTCTTTTTCATGGCAACTATCCAGATCCCTTCTGGAGCCTTCTCCACCACCTAAGC
TGTTGAACAATACCTGGCTGTCCAAGAGCTCCGAGCCTTAGACGTGGGGTCCAGGAACCTGAGAGGAC
ACACACAGAGCCGGCACAGGTCAATGCATCGTTGGCTGAGAGGGGGTTCACCAGACCATGGGGAAAA
GACTTAAGTCACTGGGTGACAGCTAGTAACAAAGACAAGAGGACAACATTAGGTGTT

AGCGGACCGACGCGTACGCGGCCGCTCGAG - GFP Tag - GTTTAA

Protein Sequence: >MG211941 representing BC060214
 Red=Cloning site Green=Tags(s)

```

MSVGRIPDAEIIYKITATELYPLQEEAKEEDRLPTLKKILSSGVFYFAWPNDGACFDLTIRAQKQGDDGSE
WGTSFFWNQLLHVPLRQHVNCHNWLLKVICGVVTIRTVYASHKQAKACLSRISCRAGARFLTRGVND
DGHVSNFVETEQTIIYDDGVSSFVQIRGSVPLFWEQPLQVGSHELLRLHRGLEANAPAFERHMVLLKEQY
GKQVVVNLGSRGGEVNLNRAFKKLLWASCHAGDTPMINFDFHQFAKGRKLEKLENLLRPQLQHWEDFG
VF AKGENVSPRFQKGLRMNCLDCLDRNTVQCFIALEVLHLQLESLGLNSKPIIDRFVESFKAMWSLNG
HSLSKVFTGSRALLEGKAKVGKLDGARSMSRTIQSNFFDGVKQEAIKLLLVGDVYNEESTDKRMLLDNT
ALLATPRILKAMTERQSEFTNFKRIQIAVGTWNVNGGKQFRSNLLGTAELTDWLLDAPQLSGAVDSQDDG
SPADVFAIGFEEMVELSAGNIVNASTTNRKMWGEQLQKAI SRSHRYILL TSAQLVGVCLYIFVRPYHVPF
IRDVAIDTVKTMGGKAGNKGAVGIRFQLHSTSFVCSHLTAGQSQVKERNEDYREITHKLSFSPGRNI
FSDYVFCGDFNYRIDLYEEVFYFVKRQDWKLMFEDQLQLKSSGKIFKDFHEGAVNFGPTYKYDVG
SAAAYDTSKCRTPAWTDRVLWWRKKHPYDKTAGELNLLDSDLGDPQIRHTWSPGTLKYYGRAELQASDH
RPVLAIVEVEVQVDVGARERVFQEVSSVQGPLDATVVVNLQSPGLEEKNEFPEDLRTLMQTLGNYGTI
ILVRINQGMVLVTFADSHSALSVDVDGKMKVKGRAVKIRPKTKDWLEGLREELLRKRDSMAPVSPTANSC
LLEENFDVSSLDYSEGDVLEEDDYLDVDFGQPVVSDSELGGDNSSDTMSSLTPASKSPALAKKQHPT
YKAGLMVKKSASDASISSGTHGQYSILQAKLLPGAPQQPPKARTGISKPYNVKQIKTTNAQEAEAAIRC
LLEASGGVPESAPGAIPLRNQGSSKPEATLGPALPRRPAAPRVPTMKKPTLRRTGKPMLEENFEPQPVH
FTMASQEMNLETPPPITATPIPPVPKPTLQPGKGVGRPSSGKPEPDEAPSVTGTVESPPPEAQEAPSL
APKVPPRRKKSAPAAFHLQVLQNNQVQLQLTCSSSSPPLKPDTHPLCLQVALGTSSARSPETHGPRVT
EPEAASFHGNYPDFWSLLHHPKLLNNTWLSKSSPELDVGSRNPERHTHEPAQVNASLAERGLPPDHGGK
DLSHWVTASNKDKRTTLGV
  
```

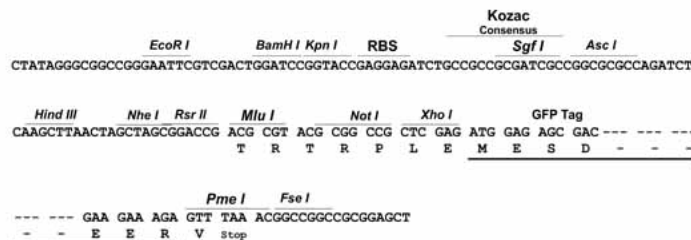
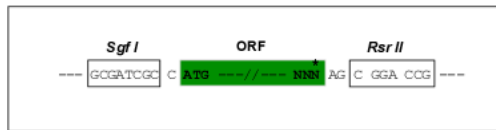
SGPTRRRLE - GFP Tag - V

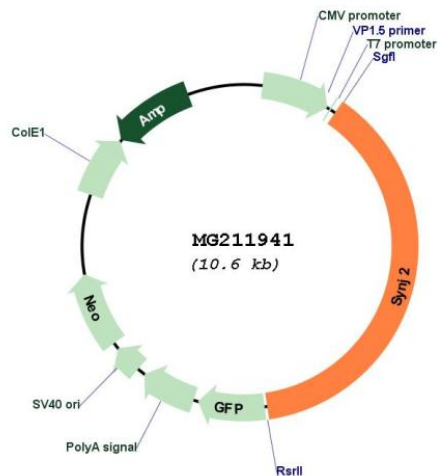
Restriction Sites:

SgfI-RsrII

Cloning Scheme:

Cloning sites used for ORF Shuttling:



Plasmid Map:


ACCN: BC060214

ORF Size: 4050 bp

OTI Disclaimer: The molecular sequence of this clone aligns with the gene accession number as a point of reference only. However, individual transcript sequences of the same gene can differ through naturally occurring variations (e.g. polymorphisms), each with its own valid existence. This clone is substantially in agreement with the reference, but a complete review of all prevailing variants is recommended prior to use. [More info](#)

OTI Annotation: This clone was engineered to express the complete ORF with an expression tag. Expression varies depending on the nature of the gene.

Components: The ORF clone is ion-exchange column purified and shipped in a 2D barcoded Matrix tube containing 10ug of transfection-ready, dried plasmid DNA (reconstitute with 100 ul of water).

Reconstitution Method:

1. Centrifuge at 5,000xg for 5min.
2. Carefully open the tube and add 100ul of sterile water to dissolve the DNA.
3. Close the tube and incubate for 10 minutes at room temperature.
4. Briefly vortex the tube and then do a quick spin (less than 5000xg) to concentrate the liquid at the bottom.
5. Store the suspended plasmid at -20°C. The DNA is stable for at least one year from date of shipping when stored at -20°C.

RefSeq: [BC060214.1](#)

RefSeq Size: 4694 bp

RefSeq ORF: 4049 bp

Locus ID: 20975

Cytogenetics: 17 3.59 cM

Gene Summary:

Inositol 5-phosphatase which may be involved in distinct membrane trafficking and signal transduction pathways. May mediate the inhibitory effect of Rac1 on endocytosis (By similarity).[UniProtKB/Swiss-Prot Function]