

Product datasheet for **MG211918**

Col18a1 (NM_009929) Mouse Tagged ORF Clone

Product data:

Product Type:	Expression Plasmids
Product Name:	Col18a1 (NM_009929) Mouse Tagged ORF Clone
Tag:	TurboGFP
Symbol:	Col18a1
Synonyms:	endostatin
Mammalian Cell Selection:	Neomycin
Vector:	pCMV6-AC-GFP (PS100010)
E. coli Selection:	Ampicillin (100 ug/mL)
ORF Nucleotide Sequence:	>MG211918 representing NM_009929 Red=Cloning site Blue=ORF Green=Tags(s)

TTTTGTAATACGACTCACTATAGGGCGGCCGGAATTCGTCGACTGGATCCGGTACCGAGGAGATCTGCC
GCC**CGATCGCC**

ATGGCGCCAGGTGGCACCTCCTGGATGTGCTCACCAGTTTGGTCTTGCTGCTGGTGGCACGCGTCTCTCT
GGCAGAGCCAGAGAATGTTGCTGAGGAGGTGGGGCTGCTGCAGCTCCTTGAGACCCCCACCTGAGAA
GATCTCACAATCGATGACCCTCAGTCGGGCCGGCTACATCTTTGGACCAGACTCCAACAGTGGCCAG
GTGGCCAGTATCATTCCAAAACCTCTCTCCGGGACTTTTCGCTGCTGTTTCATGTCGGCCAGCCA
CAGAGGCAGCAGGGGTGCTATTTGCCATCACAGATGCTGCCAGGTGGTAGTCTCACTGGGCGTGAAGCT
CTCAGAGGTCCGAGATGGACAGCAAAACATCTCATTGCTCTACACGGAGCCTGGGGCCAGCCAGACCCAG
ACGGGAGCCAGCTCCGCTACCTGCATTTGTTGGCAGTGGACACACTTCGCGCTCAGCGTCGACGGAG
GCTCTGTGGCTCTACGTAGACTGTGAAGAATCCAGAGGGTGCCATTTGCTCGGGCTCGCAGGGACT
GGAGCTAGAGCGTGGCGCTGGCCTCTTTGTGGGTGAGGCTGGAACAGCAGACCCTGACAAGTCCAGGGG
ATGATCTCAGAGCTGAAGGTACGCAAAACCCCGGGTGAACCTGTGCACTGTCTGGATGAAGAAGATG
ATGATGAAGACCGGCATCTGGAGATTTTGAAGTGGCTTTGAAGAAAGCAGCAAGTACACAAGGAGGA
TACATCTACTACCTGGGCTCCCTCAGCCACCTCCTGTCACTTCCCCACCCCTGGCTGGAGGCAGCACC
ACAGAAGATCCTAGAACAGAAGAACCGGAGGAAGACGCCGGTAGATTCTATAGGAGCTGAGACCCCTTC
CTGGCACAGTTCAAGCGGTGCATGGGATGAGGCTATCCAGAACCCCGGAAGGGGCTTGATAAAGGGAGG
TATGAAAGGACAAAAGGAGAACCAGGTGCCAGGGCCACCTGGCCAGCTGGGCCCCAGGGTCTGTGCC
GGTCCAGTGGTCCAGAGCCCAACTCACAACTGTCCCTGGAGCACAAGGACCCCGGGACCTCAGGGGC
CACCAGGGAAGGATGGCACTCCAGGAAGGGATGGTGAACCGGTGACCCTGGTGAAGATGGGAGACCGGG
TGACACTGGACCTCAAGGCTTTCCAGGGACCCAGGAGATGTGGGCCCTAAGGGCGAGAAGGGAGATCCT
GGTATTGGGCCCCGAGGACCTCCAGGGCCTCCAGGGCCACCAGGACCTCCTTCAGACAAGACAAGCTGA
CCTTCATTGACATGGAGGATCCGGTTTCAGCGGAGACATAGAGACCTTAGAGGCCACAGGCTTCCC
TGCCCCCGGGCCCCCTGGTGTCCAGGACTTCTGGTGGAGCCAGGACGCTTTGGGATCAATGTTCC



[View online »](#)

TATGCACCAGGACCTGCAGGCCTTCTGGTGTACCTGGGAAGGAAGGACCCCCGGTTTTCCAGGTCCCC
CGGGACCTCCAGGTCTCCAGGCAAAGAGGGCCACCAGGAGTGGCCGGCCAGAAAGGCAGTGTGGTGA
TGTGGGCATCCCAGGACCAAGGGGAGCAAAGGAGACCTTGGGCCATCGGTATGCCTGGCAAGTCTGGC
TTGGCTGGATCCCCTGGGCCAGTTGGACCCCCAGGACCTCCAGGGCCTCCAGGGCCACCAGGACCAGGAT
TTGCTGCTGGATTCGATGATATGGAAGGCTCTGGAATACCCCTCTGGACAACAGCCCGAAGCTCTGATGG
GCTGCAGGGACCTCCCGGGTCGCCGGGACTCAAGGGGGATCCTGGAGTGGCAGGCCTACCTGGAGCCAAG
GGAGAAGTTGGAGCAGATGGAGCCAGGGCATCCCTGGTCCCCCAGGAAGAGAAGGTGCAGCTGGATCTC
CGGGGCCAAAAGGAGAGAAAGGGATGCCGGGAGAAAAGGGAAACCAGGAAAAGATGGAGTGGCCGGCC
GGGCTCCCTGGGCTCCAGGACCTCCAGGCTGTGATCTATGTGTCAAGTGAAGATAAAGCAATAGTG
AGCACGCCAGGACCTGAGGGCAAGCCAGGGTACGCAGGCTTTCCTGGACCTGCTGGACCGAAGGGTGACC
TGGGTTCAAAGGCGAGCAGGGTCTTCCGGGGCCAAAGGGTGAGAAGGGAGAGCCAGGCACTATCTTTAG
TCCTGATGGCAGAGCTCTGGCCATCCCCAGAAGGGAGCCAAGGGAGAGCCAGGCTTTCGAGGACCCCCG
GGTCTTATGGACGACCTGGGCACAAGGGTGAATTTGGCTTCCCTGGACGGCCGGTTCGACCTGGAACGA
ATGGCTTAAAGGGAGAGAAAGGAGACCTGGAGATGCCAGCCTTGGGTTCCAGCATGAGGGGATTGCCTGG
CCCCCTGGGCTCCAGGACCCCAGGTCTCCTGGGATGCCATCTATGACAGCAATGCATTTGTGGAG
TCTGGCCGACCTGGACTACCAGGACAGCAGGGTGTGCAGGGGCCTTCAGGACCAAAGGGTGACAAAGGAG
AGGTGGGCCCACCTGGGCCACCAGGGCAATTCCCCATTGACCTTTCACCTGGAAGCGGAAATGAAGGG
GGACAAGGGAGACCGAGGGGATGCTGGACAGAAAGGAGAGAGGGGAGAACCTGGGGCTCCTGGTGGTGA
TTCTTCAGCTCAAGTGTACCTGGCCCCCGGCCACCTGGATACCCTGGAATTCGGGTCCAAAGGGAG
AGAGCATCCGGGGGCCACCTGGCCCTCTGGCCCGCAGGGACCTCCTGGCATTGGCTATGAGGGTCGCCA
GGTCCCCCAGGACCTCCGGGACCTCCAGGACCTCCCTCCTTCCCTGGCCCTCACAGACAGACTGTCAGT
GTTCTGGTCTCCGGGGCCACCTGGTCTCCAGTCCCCCAGGAGCCATGGGTGCCTCTGCTGGGCAGG
TGAGGATCTGGCCACATACCAGACCATGCTGGACAAGATCCGGGAGGTGCCGGAGGGCTGGCTCATCTT
TGTGGCCGAGAGGGAAGAGCTCTATGTACGCGTTAGAAAATGGCTTCCGGAAGGTGCTGCTGGAGGCCCG
ACAGCCCTCCCGAGAGGCACGGCAATGAGGTGGCTGCTTTCAGCCCCATTGGTCCAGCTTCATGAGG
GCAGTCCATACCCCGAGGGAGTACTCTATTCCACGGCACGACCCTGGCGAGCAGATGACATCCTGGC
CAACCCACCGCGCTGCCAGACCGCCAGCCTTACCCCGGAGTTCACATCACCACAGTTCCTATGTGCAC
CTGCCGCCAGCCCGCCCCACCCTCTCACTTGCTCATACTCATCAGGACTTTCAGCCAGTGTCCACCTGG
TGGCACTGAACACCCCCCTGTCTGGAGGCATGCGTGGTATCCGTGGAGCAGATTTCCAGTGTCTCCAGCA
AGCCCCGAGCCGTGGGGCTGTCCGGCACCTCCGGGCTTTCCTGTCTCTAGGCTGCAGGATCTCTATAGC
ATCGTGCCTGTGCTGACCGGGGTCTGTGCCATCGTCAACCTGAAGGACGAGGTGCTATCTCCAGCT
GGGACTCCCTGTTTTCTGGCTCCAGGGTCAACTGCAACCCGGGGCCCGCATTTTTCTTTGACGGCAG
AGATGTCTGAGACCCAGCCTGGCCGAGAAGAGCGTATGGCACGGCTCGGACCCAGTGGGGCGAGG
CTGATGGAGAGTTACTGTGAGACATGGCGAACTGAACTACTGGGGCTACAGGTGAGGCCTCCTCCCTGC
TGTGAGGACGGCTCCTGGAACAGAAAGCTGCGAGCTGCCACAACAGCTACATCGTCTGTGATTGAGAA
TAGCTTCATGACCTTTTCTCCAAA

AGCGGACCGACGCGTACGCGGCCGCTCGAG - GFP Tag - GTTTAA

Protein Sequence: >MG211918 representing NM_009929
 Red=Cloning site Green=Tags(s)

MAPRWHLLDVLTSLVLLLVARVSWAEPENVAEEVGLLQLLGDPLPEKISQIDDPHVGPAYIFGPDSNSGQ
 VAQYHFPKLFFRDFSLLFHVRPATEAAGVLFITDAAQVVVSLGVKLSEVRDQQNISLLYTEPGASQTQ
 TGASFRLPFAVFGQWTHFALSVDGGSVALYVDCEEFQRVPFARASQGLELERGAGLFGVQAGTADPKFKQG
 MISELKVRKTPRVSPVHCLDEEDDEDASGDFGSGFEESKSHKEDTSLLPGLPQPPPVTSPPLAGGST
 TEDPRTEETEEDA AVDSIGAETLPGTGSAGWDEAIQNPGRGLIKGGMKGQKGEPAQGGPPGAGPQGPA
 GPVVQSPNSQPVPGAQGGPPGQGGPKDGTGPRDGEVGDGPGEDGRPGDTGPQGFPGTPGDVGPKEKGD
 GIGPRGPPGPPGPPGPFQDKLTFIDMEGSGFSGDIESLRGPRGFPGPPGPPGVPGLPGEPRFGINGS
 YAPGPAGLPGVPGKEGPPGFPGPPGPPGPPGKEGPPGAVAGQKGSVGDVGIKPKGSKGDLGPIGMPKSG
 LAGSPGVPGGPPGPPGPPGPFAGFDDMEGSGIPLWTTARSSDGLQGGPSPGLKGDGVPVAGLPGAK
 GEVGDGAQGIKPPGREGAAGSPGPKGEGMPGEGKGNPKDGVGRPLGPPGPPGPIVYVSSDKAIV
 STPGPEKPGYAGFPAGPKGDLGSKGEQLPGPKGEGEPGTIFSPDGRALGHPQKAKGEPGFRGPP
 GPYGRPGHKGEIGFPRGPRPGTNGLKGEKGEVGDASLGF SMRGLPGPPGPPGPPGMPIYDSNAFVE
 SGRPGLPGQQGVQGPSGPKGDKGEVGGPPGQFPIDL FHLAEAMKGDKGRGDAGQKGERGEPGAGGG
 FFSSSVPGPPGPPGYPGIPGPKGESIRGPPGPPGQGGPIGYEGRQGGPPGPPGPPSFPGPHRQTVS
 VPGPPGPPGPPGPPGAMGASAGQVRIWATYQTMLDKIREVPEGLIFVAEREEL YVRVRNGFRKVLLEAR
 TALPRGTGNEVAALQPPLVQLHEGSPYTRREYSYSTARPWADDILANPPRLPDRQPYGVPVHHSSVYH
 LPPARPTLSLAHTHQDFQPVHLVALNTPLSGGMRGIRGADFQCFQARAVL SGTFRFLSSRLQDLYS
 I VRRADRGSVPIVNLKDEVLSPSWDSLFGSQQQLQPGARIF SFDGRDVL RHPAWPKQSVWHGSDPSGRR
 LME SYCETWRTE TTGATGQASSLLSGRLLEQKAASCHNSYIVLCIENSFMTSFSK

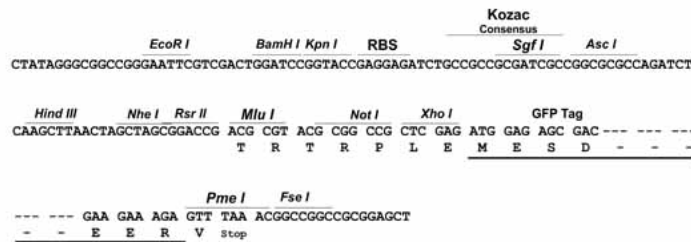
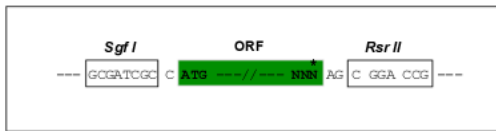
SGPTRRRLE - GFP Tag - V

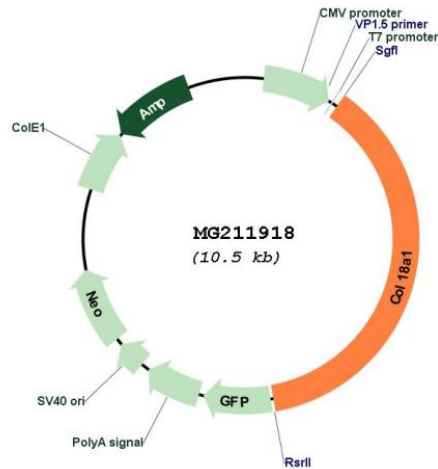
Restriction Sites:

SgfI-RsrII

Cloning Scheme:

Cloning sites used for ORF Shuttling:



Plasmid Map:


ACCN: NM_009929

ORF Size: 3945 bp

OTI Disclaimer: The molecular sequence of this clone aligns with the gene accession number as a point of reference only. However, individual transcript sequences of the same gene can differ through naturally occurring variations (e.g. polymorphisms), each with its own valid existence. This clone is substantially in agreement with the reference, but a complete review of all prevailing variants is recommended prior to use. [More info](#)

OTI Annotation: This clone was engineered to express the complete ORF with an expression tag. Expression varies depending on the nature of the gene.

Components: The ORF clone is ion-exchange column purified and shipped in a 2D barcoded Matrix tube containing 10ug of transfection-ready, dried plasmid DNA (reconstitute with 100 ul of water).

Reconstitution Method:

1. Centrifuge at 5,000xg for 5min.
2. Carefully open the tube and add 100ul of sterile water to dissolve the DNA.
3. Close the tube and incubate for 10 minutes at room temperature.
4. Briefly vortex the tube and then do a quick spin (less than 5000xg) to concentrate the liquid at the bottom.
5. Store the suspended plasmid at -20°C. The DNA is stable for at least one year from date of shipping when stored at -20°C.

RefSeq: [NM_009929.3](#), [NP_034059.2](#)

RefSeq Size: 5058 bp

RefSeq ORF: 3948 bp

Locus ID: 12822

UniProt ID: [P39061](#)

Cytogenetics: 10 39.72 cM

Gene Summary:

Probably plays a major role in determining the retinal structure as well as in the closure of the neural tube.[UniProtKB/Swiss-Prot Function]