

## Product datasheet for **MG211894**

### Oplah (NM\_153122) Mouse Tagged ORF Clone

#### Product data:

**Product Type:** Expression Plasmids  
**Product Name:** Oplah (NM\_153122) Mouse Tagged ORF Clone  
**Tag:** TurboGFP  
**Symbol:** Oplah  
**Synonyms:** 1700010G02Rik  
**Mammalian Cell Selection:** Neomycin  
**Vector:** pCMV6-AC-GFP (PS100010)  
**E. coli Selection:** Ampicillin (100 ug/mL)  
**ORF Nucleotide Sequence:** >MG211894 representing NM\_153122  
 Red=Cloning site Blue=ORF Green=Tags(s)

TTTTGTAATACGACTCACTATAGGGCGGCCGGAATTCGTCGACTGGATCCGGTACCGAGGAGATCTGCC  
 GCC**CGATCGCC**

ATGGGCAGCCCAGAAGAGCGCTTCCATTTGCCATCGACCGTGGTGGCACCTTTACAGATGTCTTTGCC  
 AGTGCCCAGGAGGGCATGTACGTGTCCTGAAGTGCTCTCAGAGGATCCTGCCAACTATGCAGACGCACC  
 CACAGAGGGCATCCGCCGAATTCAGAGCAGGAGAGGGGTGTGCTGCTGCCCGAGGCCGGCCGCTAGAC  
 ACCAGTCACATCGCCAGCATCCGCATGGGTACCACCGTGGCCACCAATGCTCTGTTGGAACGGCAGGGAG  
 AACGGGTGGCACTGCTGGTGACTCGCGTTTCCGAGACCTGCTGCATATTGGCACTCAGGCCCGCCAGA  
 CCTCTTTGACCTGGCTGTGCCATGCCAGAGGTAAGTATGAGGAGGTCGTGGAGGTGGACGAGCGAGTG  
 CTGCTGTATCGTGGAACCCGGTGGCGCTCTCCCGTCAAAGGCTGTACAGGGGACCTGTAGAGATAC  
 AGCAGCCTGTGGATCTGGCAGCCCTGCGTGGGAAGCTGGAGGGGCTTTGACTCGGGCATTACAGCCT  
 GGCAGTGGTACTCATGCAATTCGTACACGTGGGCCAGCAGCAGCAGGTTGGGCACACTGGCCCGGGAG  
 CTGGGCTTACGCACGTCTCCTTGCTCGGAAGTCATGCCCATGGTGGGATTGTTCTCGGGGCATA  
 CGGCCTGTGCAGATGCTTACCTCACTCCACCATCCAGCGCTATGTGCAGGGCTCCGCCAGGCTTCCA  
 GGGCCAGCTAAAGAATGTCAAGTCCTCTTCATGCGCTCCGATGGTGGCTGGCACCATGGATGCCTTC  
 AGTGGCTCCCGGGCTGTGCTCTGCGCCCTGCTGGTGGTGGTGGTGGCTACTCCACTACCACCTACCAGC  
 TGGAAAGTGGTCAGCCTGTCATTGGCTTTGACATGGGAGGCACATCCACAGATGTGAGCCGCTATGCTGG  
 AGAGTTTGAGCATGTCTTTGAGGCTAGCACGGCAGGTGTTACCCTCCAGGCCCCACAGCTGGACATCAAT  
 ACGGTGGCAGCTGGCGGGGTTCCCGCCTCTTCTCAGGTCTGGCCTCTTTGTGGTTGGTCCAGAGTCAG  
 CAGGTGCCACCCAGGTCCTGCCTGCTACCGCAAAGGGGTCCTGTGACAGTGACAGATGCTAATCTGGT  
 TCTGGGTGCCTGCTGCCTGCCTCTTCCCTGCATTTTGGGCCAGGAGAAGACCAGCCATTGTCTCCC  
 GAGGCTTCCGAAAGGCTCTAGAGGCTGTGGCCATGGAGGTCAACAGTTTCTGGCCAGTGGACCCTGCC  
 CAGCTTCCAGCTAAGTCTGGAGGAGGTGGCCATGGGTTTGTGCGTGTGCCAACGAAGCCATGTGCCG  
 GCCTATCCGTGCCCTCACACAGGCAGAGGCCAGGCCCTCAGCCCATGTACTGGCTTGTCTTGGAGGA



[View online >](#)

GCCGGTGGGCAACACGCTTGTGCCATTGCCGGGCCCTGGGTATGGACTGTGCATATTCACAGGCACA  
 GCGGGCTGCTGTGACTGGGACTGGCCTGGCCGATGTGGTTCACGAAGCACAGGAGCCCTGTTCCCT  
 GTCTTACACACCTGAAACCTTTGCACAACCTGGACCAGAGACTGAGCCGCCTGGAGGAGCAGTGTGTGGAT  
 GCCCTGCAGGCCAGGGCTTCTCTAGGTCTCAGATCAGCACCCGAGAGCTTCTGCACCTTCGCTACCAAG  
 GCACTGACTGTGCCCTAATGGTGTCTGCCAATCAGCATCCGGCCACAACCTGCTCACCCCGTGTGGTGA  
 CTTTGGAGCAGCGTTTGTGAGAGGTACATGAGAGAGTTGGCTTCATCATTCTGAGCGCTCGTGGTG  
 GTAGATGATGTGCGTGTGAGGGAACTGGCCGTAGTGGACTTCAGCTGGAGGAGACCTCCAAAATCCAGA  
 GTGGACCTCCGCATGTGAAAAGGTGACCCAGTGTACTTTGAAGGGGGTTATCAGGAGACTCCCGTGTA  
 CCTTTTAGGAGAACTAGGCTACGGGCATCAGCTTCAAGGGCCCTGCCTGATCATTGACAACAACAGCACC  
 ATCCTTGTAGAACCAGGTTGCCAAGCGGAGGTGATTGAGACAGGGGACATCCGCATTTCTGTGGGAGCCG  
 AGGCTCCAGTATGATAGACACCAAGCTTGACCCATCCAGTTGTCTATTTTCTCACACCGTTTCATGAG  
 CATTGCTGAGCAGATGGGCCGATCCTACAGCGCACAGCCATCTACCAACATCAAGGAACGCCTCGAC  
 TTCTCCTGTGCCCTTTGGGCCAGATGGGGCCCTCGTCTCCAATGCTCCCCACATTCTGTGCACCTGG  
 GTGCCATGCAAGAGACTGTACAGTTCAGATTCAGCACTTAGGAGCCGACCTCCATCCTGGTGTGTGT  
 GCTTAGTAACCATCCCAGTGCAGGGGGCAGCCATCTTCTGACCTGACTGTCATCACACCGGTGTTTTGG  
 CCAGGTAGTCCGAGCCCTGTGTTCTACGTGGCTAGCCGAGGGCACCACGGGACATTGGAGGTATACCC  
 CGGGTTCTATGCCTCCTCACTCTACCACACTGCAGCAGGAGGGTCCGTTTTTCTGTCTTCAAACCTGGT  
 CCAGGGAGGAGTCTTCCAGGAAGAGGGGTGACAGAGGCCTTACAGGCCCCAGGCAAGATCTCTGGCTGC  
 AGTGGGACCAGGAACCTGCATGACAACCTGTGGATCTCCGTGCCAGGTGGCAGCTAACAGAAAGGCA  
 TCCAGCTGGTGGGAGAGCTGATCGGACAGTATGGCTTAGATGTGGTGCAGGCCTATATGGCCATATTCA  
 GGCAAATGCTGAAGTACAGTGCAGACATGCTTCGTGCTTTTGGAACTCCCGCCAGGCCAGGGCCCTG  
 CCCCTGGAGGTGTCTGCAAGGATCACATGGACGATGGCTCTCCATCTGCCTGCATGTTTCCAGTCAACC  
 TGAAATCAGGGCAGCGCTGATTTGACTTCAGTGGTTCTGGGTCTGAGGTGTTTGGCAATCTCAATGCCCC  
 TCGAGCCATAAACAAGTGTCTGCTCATCTATTGCTTGGCTGTCTAGTGGCCGTGACATCCCACTTAAC  
 CAGGGTTGCCTGGCTCCTGTGCAAGTATAATTCCCAAAGGCTCCATATTGGATCCATCCCAGAGGCAG  
 CAGTGGTCCGAGGCAACGTGCTCACATCTCAGCGAGTCTGGATGTCATCCTGGGGGCTTTTGGGCCTG  
 TGCAGCTCCAGGGCTGCATGAACAATGTGACCCTGGGCAATGCCCGTATGGGCTACTATGAGACAGTA  
 GCTGGTGGTGGGGTGCAGGCCCTGGCTGGCATGGGCGCAGTGGTGTACACAGTACATGACCAACACGC  
 GCATTACGGACCCAGAGATTTTGGAGAGCCGTATCCAGTTATCCTGCGCCGCTTTGAGCTGAGGCCAGG  
 CTCTGGAGGCCGAGGCCCTTCCGGGGAGGTGATGGCGTAGTCCGAGAGCTGGTCTTTCGGGAAGAGGCC  
 CTACTGTCTGTCTCACGGAGCGCCGCTTCCAGCCTTATGGCCTCCACGGGGGAGAGCCTGGTACAC  
 GTGGCTTAAACCTCCTGATCAGAAAAGATGGGCGCACAGTGAATCTGGGCGGCAAGACATCCGTGACTGT  
 GTATCCCGGGGACGCGTTCTGCCTCCACACGCCTGGGGGTGGGGCTATGGAGACCCGGAGGCCAGCA  
 CCACCACAGGCTCGCCCCGCTATATCCAGCCTTCCAGAGCGAGGCAGTGTGTATGAGTACCGCCGCG  
 CCCAGGAAGCAGTA

AGCGGACCGACGCGTACGCGGCCGCTCGAG - GFP Tag - GTTTAA

Protein Sequence: >MG211894 representing NM\_153122  
 Red=Cloning site Green=Tags(s)

MGSPEERFHFAIDRGGTFTDVFAQCPGGHVRVLKLLSEDPANYADAPTEGIRRILEQERGVLLPRGRPLD  
 TSHIASIRMGTTVATNALLERQGERVALLVTRGFRDLLHIGTQARPDLFLAVPMPEVL YEEVVEVDERV  
 LLYRGEPEGAGSPVKGCTGDLEIQQPVDLAALRGKLEGLL TRGIHSLAVVLMHSYWAQHEQQVGTLARE  
 LGFTHVSL SSEVMPMVRIVPRGHTACADAYL TPTIQRYVQGFRRGFQGGQLKNVQVLFMRSDGGLAPMDAF  
 SGRSAVLSGPAGGVVGYSTTTYQLEGGQPVIGFDMGGTSTDVSR YAGEFEHVFEASTAGVTLQAPQLDIN  
 TVAAGGGSRLLFFRSGLFVVGPE SAGAHGPACYRKGGPVTVTDANLV LGRLLPASFCIFGPGEDQPLSP  
 EASRKALEAVAMEVNSFLASGPCPASQLSLEEVAMGFVRVANEAMCRPIRAL TQARGHDPSAHVLACFGG  
 AGGQHACAIARALGMDTVHIHRHSGLLSALGLALADV VHEAQEPCSLSYTPETFAQLDQRLSRLEEQCVD  
 ALQAQGF SRSQISTESFLHLRYQGTDCALMV SANQHPATTCSPRAGDFGA AFVERYMREFGFIIPERSV  
 VDDVVRVGTGRSGLQLEETS KIQSGPPHVEKVTQCYFEGGYQETPVYLLGELGYGHQLQGPCIIDNNST  
 ILVEPGCAEVIETGDIRISVGA EAPSMIDTKLDPIQLSIFSHRFMSIAEQMGRILQRTAISNIKERLD  
 FSCALFGPDGGLVSNAPHIPVHLGAMQETVQFQIQHLGADLHPGDVLLSNHPSAGGSHLPDLTVITPVFW  
 PQQSRPVFYVASRGGHADIGGITPGSMPPHSTTLQQEGAVFLSFKLVQGGV FQEEAVTEALQAPGKISGC  
 SGTNRNLHDNLSDLRAQVAANQKGIQLV GELIGQYGLDVVQAYMGHIQANAELAVRDLRAFGT SRQARGL  
 PLEVS AKDHMDGSPICLHVQINLNQGS AVDFSGSGSEVFGNLNAPRAITLSALIYCLRCLVGRDIPLN  
 QGCLAPVQVIIPKGSILDP S PEA AVVGGNVLTSQRVVDVILGAFGACAASQGCMMNVTLGNARMGYETV  
 AGGAGAGPGWHGRSGVHSHMTNTRITDPEILESRYPVILRRFELRPGSGGRGRFRGGDGVVRELVFREEA  
 LLSVL TERRAFQPYGLHGGEPGTRGLNLLIRKDGRTVNLGGKTSVTVYPGDAFCLHTPGGGGYGDPEDPA  
 PPPGSPPLYPAFPERGSVVEYRRAQEA V

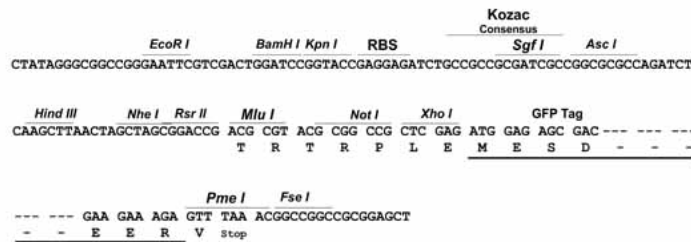
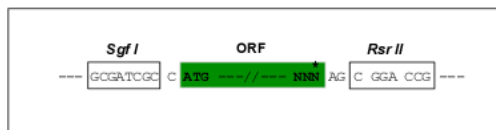
SGPTRRRLE - GFP Tag - V

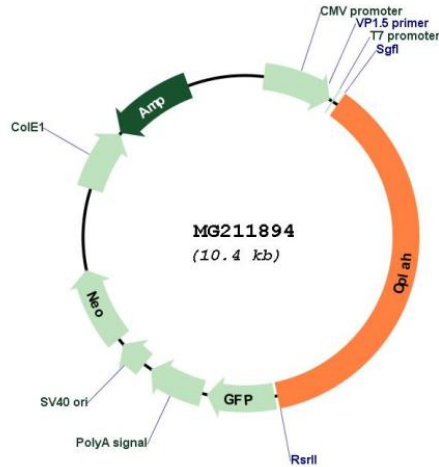
Restriction Sites:

SgfI-RsrII

Cloning Scheme:

Cloning sites used for ORF Shuttling:



**Plasmid Map:**


**ACCN:** NM\_153122

**ORF Size:** 3864 bp

**OTI Disclaimer:** The molecular sequence of this clone aligns with the gene accession number as a point of reference only. However, individual transcript sequences of the same gene can differ through naturally occurring variations (e.g. polymorphisms), each with its own valid existence. This clone is substantially in agreement with the reference, but a complete review of all prevailing variants is recommended prior to use. [More info](#)

**OTI Annotation:** This clone was engineered to express the complete ORF with an expression tag. Expression varies depending on the nature of the gene.

**Components:** The ORF clone is ion-exchange column purified and shipped in a 2D barcoded Matrix tube containing 10ug of transfection-ready, dried plasmid DNA (reconstitute with 100 ul of water).

**Reconstitution Method:**

1. Centrifuge at 5,000xg for 5min.
2. Carefully open the tube and add 100ul of sterile water to dissolve the DNA.
3. Close the tube and incubate for 10 minutes at room temperature.
4. Briefly vortex the tube and then do a quick spin (less than 5000xg) to concentrate the liquid at the bottom.
5. Store the suspended plasmid at -20°C. The DNA is stable for at least one year from date of shipping when stored at -20°C.

**RefSeq:** [NM\\_153122.1](#)

**RefSeq Size:** 3970 bp

**RefSeq ORF:** 3867 bp

**Locus ID:** 75475

**UniProt ID:** [Q8K010](#)

**Cytogenetics:** 15 D3

**Gene Summary:** Catalyzes the cleavage of 5-oxo-L-proline to form L-glutamate coupled to the hydrolysis of ATP to ADP and inorganic phosphate.[UniProtKB/Swiss-Prot Function]