

Product datasheet for **MG211874**

Ncan (BC065118) Mouse Tagged ORF Clone

Product data:

Product Type:	Expression Plasmids
Product Name:	Ncan (BC065118) Mouse Tagged ORF Clone
Tag:	TurboGFP
Symbol:	Ncan
Synonyms:	C230035B04; Cspg3; Cspg3-rs; Tgfbit
Mammalian Cell Selection:	Neomycin
Vector:	pCMV6-AC-GFP (PS100010)
E. coli Selection:	Ampicillin (100 ug/mL)
ORF Nucleotide Sequence:	>MG211874 representing BC065118 Red=Cloning site Blue=ORF Green=Tags(s)

TTTTGTAATACGACTCACTATAGGGCGGCCGGAATTCGTCGACTGGATCCGGTACCGAGGAGATCTGCC
GCC**CGATCGCC**

ATGGGGGCCGGATCTGTGTGGGCCTCAGGCCTCCTGCTGCTGTGGCTGCTTCTCCTAGTGGCTGGGGATC
AGGACACACAGGACACCACCGCCACGAAAAGGGCTTCGCATGCTGAAGTCAGGGTCAGGACCCGTCGG
TGCTGCCCTGGCAGAGCTAGTGGCCCTGCCCTGCTTCTTACCCTGCAACCACGGCTAAGCTCCCTGCGA
GACATTCCTCGGATCAAGTGGACTAAGTTTCAGACTGCATCAGGCCAGCGACAGGATTTGCCAATCTTGG
TGGCCAAAGACAACGTGGTGCCTGTGGCAAGGGCTGGCAGGGACGGGTGTCATTGCCTGCTTATCCCCG
GCACAGAGCCAATGCTACCCCTTCTGCTGGGGCCACTTCGAGCAAGCGACTCTGGGCTGTATCGCTGCCAA
GTGGTAAAGGGTATCGAAGATGAGCAGGACCTGGTAACCTGGAAGTGACAGGCGTCTGTGTTCCATTATC
GGGCGGCCCGGGACCGCTATGCGCTGACCTTCGCTGAGGCCAGGAGGCTTGTGCGCTAAGCTCTGCTAC
CATCGCTGCCCCACGGCACCTGCAGGCTGCCTTTGAAGATGGCTTTGACAACCTGCGACGCGGGCTGGCTC
TCAGACCGCACGGTTCGGTACCCGATCACTCAGTCGCGTCTGTTGCTATGGTGACCGCAGCAGTCTCC
CGGGTGTTCGGAGCTACGGGAGACGCGACCCGACGAACTCTACGATGTCTACTGCTTTGCCCGGAGCT
AGGGGTGAAGTCTTTTACGTGGGCCCGGCCCGGACTGACCTGGCGGGCGCGGGGCACAATGTCAG
CGGCAGGGTGCAGCGCTGGCCTCGGTGGGCAGTTGCACCTGGCTGGCAGAGGCTGGACAGTGGC
ACCCGGGCTGGCTGGCAGACGGCAGCGTGCCTACCCATCCAGACTCCGCGCCGGCGTTGCGGGGGCCC
CGCCCCAGGTGTGCGCACTGTGTACCGCTTCGCAACCGCACCGCTTTCCTGCGCCAGGAGCACGCTTC
GACGCTACTGCTCCGAGCTCATCACCATACAGCACAACATGGAGATTCTGAGATCCCCTCATCTGGAG
ATGAGGGGGAGATTGTGTGAGCAGAGGGGCTCCAGGCCGAGAATAAGCCAGCTTGGGGGAACAGGA
GGTGATAGCACCTGACTCCAGGAACCTCTCATGTCCAGTGGAGAAGGCGAACCCCGACTTGACTTGG
ACACAAGCACCTGAGGAGACCTTGGTTCTACTCCAGGGGTCCCACGCTGGCCTCATGGCCCTCTTCAG
AAAAGTGGCTCTTACGGGTGCCCAAGCTCCATGGGTGTCTCCAGTCCCAGCGACATGGGAGTAGATAT
GGAAGCGACAACACCTTGGGCACACAGGTAGCACCCACCCACGATGAGGAGGGCCGCTTTAAAGG



[View online >](#)

TTGAATGGTTCGACACTTCCAGCAGCAGGGCCAGAAAGACCAGCTGCCTGAGGTAGCAGAGCCCAGTGCCC
AGCCTCCCACCCTGGGAGCTACTGCCAACCACATGAGGCCTTCTGCAGCCACAGAGGCTTCAGAGAGTGA
CCAGAGCCACAGTCCCTGGGCCATTCTGACCAACGAAGTGGATGAGCCAGGAGCAGGCTCTCTTGGCAGC
AGGAGTCTCCAGAGTCCCTGATGTGGTCCCGCTGTTGATCTCACCCAGTGTCCAAGCACCGACAGTA
CTCCTAGCGCGAAGCCAGGGCAGCCGAGGCACCCAGTGTGAAGTCAGCCATCCCCACCTGCCCGGCT
GCCCTCAGAGCCCCCTGCTCCCTCTCCCGGGCCCTCAGAGGCCCTAAGTGTCTCCCTCCAGGCATCC
TCTGTGATGGTCCCTGACTTCCCATTTGTAGCCATGCTTCGAGCCCCAAACTGTGGCTTCTGCCAC
GCTCTACACTTGTCCCAATATGACCCCAAGTCCCACTGTCCCAGCTTCTCCACTTCCCTCCTGGGTCCC
AGAAGAACAGGCTGTGAGCCTGTGAGCCTTGGAGCGGAAGACCTCGAAACCCCATTTTCAGACCACCATA
GCTGCCCCAGTTGAAGCCAGCCACAGATCCCCTGATGCAGATTCTATAGAAATCGAGGGGACCAGCTCCA
TGCGGGGTACAAAGCACCCCATCTCTGGCCATGGGCTTCTTTGGACTCTAGTAATGTGACGATGAATCC
TGTCCCTTCTGATGCTGGCATCCTAGGGACTGAGTCTGGGGTCTTGGACTTACCAGGGAGTCCCACATCA
GGCGGACAGGCCACTGTGGAGAAGGTGCTGGCCACCTGGTACCCTGCCTGGCCAAGGACTAGACCCTG
GCTCCCAGTCCACACCCATGGAAGCCATGGGGTTGCCGTGAGCATGGAACCTACAGTGGCTTTGGAGGG
AGGTGCCACCGAGGGCCCTATGGAGGCCACCAGGGAGGTGGTCCCAGCACTGCTGATGCCACTTGGGAG
TCTGAATCCAGAAGTGCCATTTCTAGCACCCACATAGCTGTGACCATGGCTAGGGCTCAGGGCATGCCCA
CACTGACCTCTACAAGCTCCGAAGGCCACCCAGAGCCTAAGGGCCAGATGGTGGCCAGGAGTCACTGGA
GCCTCTCAACTCTGCCTTCGCACCCCTGGTCAATCCCTGGTGGTCCCCATGGATGAAGTGGCCTCAGTT
TCCTCAGGGGAACCCACAGGACTGTGGGACATACCCAGCACTCTGATACCTGTATCCTTGGGCTTGGATG
AATCAGACCTGAATGTTGTGGCTGAGAGTCCAAGCGTGAAGGGCTTCTGGGAAGAGGTGGCCAGCGGGCA
GGAAGATCCCACAGATCCCTGCGAGAACAACCCCTGCCTGCATGGGGGCACCTGCCACACCAACGGCACC
GTGTATGGCTGTAGTTGTGACCAGGGCTATGCTGGGGAGAATTGTGAAATTGACATTGATGACTGCTTAT
GCAGCCCTTTCGAGAATGGGGGCACCTGCATCGACGAGTGAATGGTTTCATCTGCCTCTGCCTCCCCAG
CTATGGGGGCAGCCTGTGTGAGAAGGACACAGAAGGCTGCGACCGTGGCTGGCACAAATTCAGGGACAC
TGCTACCGGTACTTTGCCCATCGCCGGGCTGGGAGGATGCAGAGAGAGATTGCAGGCGCCGAGCTGGTC
ACCTGACAAGCGTCCATTCGCCAGAAGAGCACAAGTTCATTAACAGTTTTGGACATGAGAATTCGTGGAT
CGGCCTGAATGACCGGACAGTAGAGAGGGACTTCCAGTGGACAGACAACACAGGACTGCAATATGAGAAC
TGGAGGGAGAAGCAGCCGGATAATTTCTCGCAGGTGGGGAGGATTGTGTGGTATGGTGGCACATGAGA
GTGGGCGCTGGAATGATGTCCCCTGCAACTACAACCTACCCTATGTCTGCAAGAAGGGTACAGTGTGTG
TGGTCCCCCTCCAGCAGTGGAGAATGCCTCTCTTGTGGTGTGCGCAAGATCAAGTACAATGTCCATGCC
ACTGTGCGATACCAGTGTGATGAAGATTCTCCAGCACCGAGTGGCCACTATCCGCTGCCGTAACAATG
GGAAGTGGGACCGCCTCAGATCATGTGCATCAAAACCAGCGGTACATCGGATGCGTAGACACCA
CCATCCACACCGACATCAAAAGCCTCGCAAGGAGCACAGAAAACACAAGAGACACCCAGCGGAAGACTGG
GAGAAAGACGAAGGGGATTTCTGC

ACGCGTACGCGGCCGCTCGAG - GFP Tag - GTTTAA

Protein Sequence: >MG211874 representing BC065118
 Red=Cloning site Green=Tags(s)

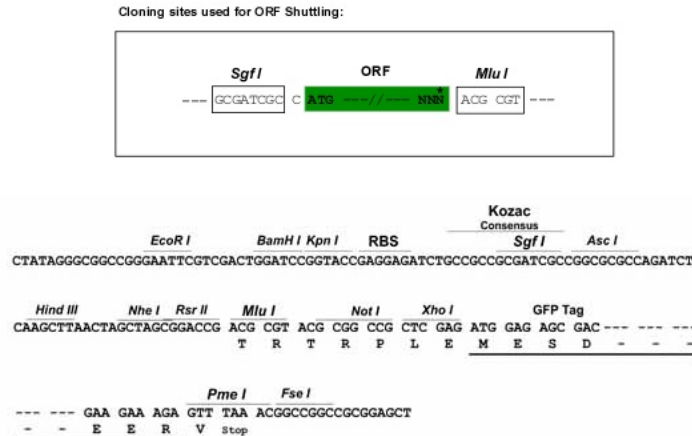
MGAGSVWASGLLLLWLLLLVAGDQDTQDTTATEKGLRMLKSGSGPVRAALAEVALPCFFTLQPRLSSLR
 DIPRIKWTKVQTASGQRQDLPILVAKDNVVRVAKGWQGRVSLPAYPRHRANATLLGLRASDSGLYRCQ
 VVKGIEDEQDLVLEVTGVVFHYRAARDRYALTFAEAQEAACRLSSATIAAPRHLQAAFEDGFDCDAGWL
 SDRTVRYPIITQSRPGCYGDRSSLPGVRSYGRDPQELYDVYCFARELGGVVFYVGPARRLTLAGARAQCCQ
 RQGAALASVQQLHLAWHEGLDQCDPGWLADGSVRYPIQTPRRRCGGPAPGVRTVYRFANRTGFAPGARF
 DAYCFRAHHHTAQHGDEIPSSGDEGEIVSAEGPPGRELKPSLGEQEVIAPDFQEPLMSSGEGEPPDLTW
 TQAPEETLGSTPGGPTLASWPSSEKWLFTGAPSSMGVSSPSDMGVMEATTPLGTQVAPTPTMRRGRFKG
 LNGRHFQQQPEDQLPEVAEPSAQPTLGATANHMRPSAATEASESDQSHSPWAILTNEVDEPGAGSLGS
 RSLPESLMWSPSLISPSVPSTDSTPSAKPGAAEPSVKSAPHLRPLPSEPPAPSPGPSEALSAVSLQAS
 SADGSPDFPIVAMLRAPKLWLLPRSTLVPNMTPVPLSPASPLSWVPEEQAVRPVSLGAEDLETPFQTTI
 AAPVEASHRSPDADSIEIEGTSSMRATKHPISGPWASLDSSNVTMNPVPSDAGILGTESGLDLPGSPTS
 GGQATVEKVLATWLPQGLDPSQSSTPMEAHGVAVSMEPTVALEGGATEGPMEATREVPSTADATWE
 SESRSAISSSTHIAVTMARAQGMPTLTSTSSEGHPEPKGMVAQESLEPLNTPSHPWSSLVPMDEVASV
 SSGEPTGLWDIPSTLIPVSLGLDES DLNVVAESPSVKGFWEVAVSGQEDPTDPCENNPCLHGGTCHTNGT
 VYGCSQDQYAGENCEIDIDDCLCSPCENGTCIDEVNGFICLCLPSYGGSLCEKDETEGCDRGGWHKFGH
 CYRYFAHRRAWEDAERDCRRRAGHLTSVHSPEEHKFINSFGHENSWIGLNDRTVERDFQWTDNTGLQYEN
 WREKQPDNFFAGGEDCVVMVAHESGRWNDVPCNYNLPYVCKKGTVLGPPPAVENASLVGVRKIKYNVHA
 TVRYQCDEGFSQHRVATIRCRRNGKWDRPQIMCIKPRRSHRMRHHHHHPRHHKPRKEHRKHKRHPAEDW
 EKDEGDFC

TRTRPLE - GFP Tag - V

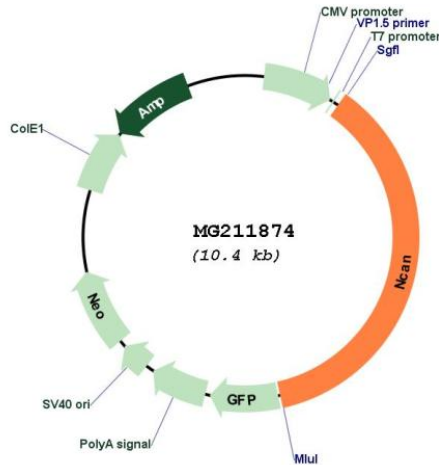
Restriction Sites:

SgfI-MluI

Cloning Scheme:



Plasmid Map:



ACCN: BC065118

ORF Size: 3806 bp

OTI Disclaimer: Due to the inherent nature of this plasmid, standard methods to replicate additional amounts of DNA in E. coli are highly likely to result in mutations and/or rearrangements. Therefore, OriGene does not guarantee the capability to replicate this plasmid DNA. Additional amounts of DNA can be purchased from OriGene with batch-specific, full-sequence verification at a reduced cost. Please contact our customer care team at custsupport@origene.com or by calling 301.340.3188 option 3 for pricing and delivery.

The molecular sequence of this clone aligns with the gene accession number as a point of reference only. However, individual transcript sequences of the same gene can differ through naturally occurring variations (e.g. polymorphisms), each with its own valid existence. This clone is substantially in agreement with the reference, but a complete review of all prevailing variants is recommended prior to use. [More info](#)

OTI Annotation: This clone was engineered to express the complete ORF with an expression tag. Expression varies depending on the nature of the gene.

Components: The ORF clone is ion-exchange column purified and shipped in a 2D barcoded Matrix tube containing 10ug of transfection-ready, dried plasmid DNA (reconstitute with 100 ul of water).

- Reconstitution Method:**
1. Centrifuge at 5,000xg for 5min.
 2. Carefully open the tube and add 100ul of sterile water to dissolve the DNA.
 3. Close the tube and incubate for 10 minutes at room temperature.
 4. Briefly vortex the tube and then do a quick spin (less than 5000xg) to concentrate the liquid at the bottom.
 5. Store the suspended plasmid at -20°C. The DNA is stable for at least one year from date of shipping when stored at -20°C.

RefSeq: [BC065118](#), [AAH65118](#)

RefSeq Size: 7147 bp

RefSeq ORF: 3806 bp

Locus ID: 13004

Cytogenetics: 8 34.15 cM

Gene Summary: May modulate neuronal adhesion and neurite growth during development by binding to neural cell adhesion molecules (NG-CAM and N-CAM). Chondroitin sulfate proteoglycan; binds to hyaluronic acid.[UniProtKB/Swiss-Prot Function]