

Product datasheet for **MG211838**

Snapc4 (BC057031) Mouse Tagged ORF Clone

Product data:

Product Type:	Expression Plasmids
Product Name:	Snapc4 (BC057031) Mouse Tagged ORF Clone
Tag:	TurboGFP
Symbol:	Snapc4
Synonyms:	5730436L13Rik
Mammalian Cell Selection:	Neomycin
Vector:	pCMV6-AC-GFP (PS100010)
E. coli Selection:	Ampicillin (100 ug/mL)
ORF Nucleotide Sequence:	>MG211838 representing BC057031 Red=Cloning site Blue=ORF Green=Tags(s)

TTTTGTAATACGACTCACTATAGGGCGGCCGGAATTCGTCGACTGGATCCGGTACCGAGGAGATCTGCC
GCC**CGATCGCC**

ATGGTCTACCAGGAGGTGATCCGGGAAAAGCTAGCAGAGGTTAGCCAGTTGCTAGCCCAGAACCAGGAGC
AGCAGGAAGAGATCCTGTTTGTCTGTCTGGAACCAAATGCCCAAGGTGAAGGATGGCAGAAGTCTGCC
CTCATACATGTACATAGGCCACTTCTGAAGCCATACTCAAGGACAAGTTACTGGAGTGGGCCCTCT
GCCAACGAAGAAACACGGGAGAAGGCTACCCAGGGAATCAAGGCCTTTGAACAGCTCTTGGTGACCAAGT
GGAAGCACTGGGAGAAAGCCTTGTCTCAGGAAGTCTGTAGTGAGTGACCGCCTACAACGTCTGCTTACGCC
CAAATTGCTGAAGCTGGAGTACTTACACGAAAAACAGAGCCGAGTCTCCAGTGAGTTGAAAGGCAGGCC
CTGGAGAAGCAGATTAAGGAAGCAGAGAAGGAGATTTCAGGACATCAACCAGCTCCAGAGGAAGCATTGT
TGGGGAACCGGCTAGACAGCCACGACTGGGAGAAGATTTCCAATATTAACTTTGAAGGAGCCCGCAGTGC
AGAGGAGATCCGGAAGTTCTGGCAGAGTTCTGAGCATCCAAGCATCAGTAAGCAGGAATGGAGCACAGAA
GAAGTAGAGAGGCTGAAGGCCATCGCTGCCACACATGGCCACCTGGAGTGGCACTTGGTTGCAGAGGAAC
TTGGGACAAGCCGAGTGCCTTTCAGTGCCTGCAGAAATCCAGCAGTACAACAAAACCTGAAACGCAA
GGAGTGGACAGAAGAGGAAGACCACATGCTCACCCAGCTGGTCCAAGAGATGCGAGTTGGAAACCATATC
CCATACCGCAAGATCGTCTACTTTCATGGAAGGGAGAGACTCCATGCAGCTGATCACCCTGGACCAAGA
GCTTAGATCCCAGCCTGAAAAGGGGATTCTGGGCCCCAGAGGAAGATGCTAAATTGCTTCAAGCTGTTGC
CAAGTATGGGGCCGAGGACTGGTTTAAAATCCGGGAAGAGGTGCCAGGTAGGAGCGATGCCCAATGCAGA
GACCGCTACATCAGAAGATTACATTTTCAGCTTGAAAAAGGGACGGTGGAATGCAAAAAGAAGAACAACAGC
TGATCCAGCTAATAGAGAAATATGGTGTGGTCACTGGGCAAGAATCGCTTCTGAATTGCCCATCGGTC
AGGCTCCCAGTGTCTGAGCAAGTGAAGATCTTGGCCAGGAAGAAACAGCATCTGCAGAGGAAGAGAGGG
CAGAGGCCCGTCACAGTAGCCAGTGGAGCTCTAGCGGCAGCAGCAGCAGCAGTGAAGACTACGGCA
GCAGCAGTGGCAGCGACGGCAGCAGCGGAGTAAAACAGATGTGGAGCTGGAGGCGTCTCTGGAGAA
GAGTAGAGCACTGACTCCTCAACAGTACAGAGTGCCAGACATTGACCTGTGGGTTCTACCAGGCTGATC



[View online »](#)

ACCAGCCAGTCACAGAGAGAAGGGACAGGGTGCTACCCACAACACCCTGCTGTCTCTGCTGCACTCAGG
ATGCCTCTCAAAATCACCACAAGGAAGTTCTACCACCCTCTCTGCTGCTGAGAAAAACCAGCTGCAGGT
GCCCTATGAGACCCACAGCACTGTTCCAAGAGGAGACCGTTCTACACTTCTCGGACACCCACTCAGCA
AGTTTGAAGGATCCGGCCTGCAAGAGTCACACACTGATGAAGGAAAGACCGAAGCAGCCACTCCTCCCTA
GTTACGCTCAGGGTCTGACCCTGGCAACAATACGGCTGGGCCCATCTGCGGCAGCTATGGCATGGAAC
TTACCAGAATAAGCAGAGACGCAAGAGACAGGCTCTACATCGCAGGCTCCTTAAGCACAGGCTTTTGCTG
GCTGTGATACCCTGGGTGGTGACATCAACCTGGCTGCACACAAGCTCCCCGGAGACTGCAACCGTTT
AGACTAAAGCTGACAGCATCCGGATGCAGTTAGAGTGTGCCCGCTGGCCAGCACTCCGGTATTCACACT
GCTTATTCAGCTATTGCAGATTGATACTGCGGGCTGCATGGAGGTGGTTCGAGAGAGGAAAAAGCCAGCCC
CCTGCACTGCTCCAGCCTGGCACCCGGAACACCAGCCGCATCTCCTGCAGGCATCCTCTAATGCCAAGA
ACAACACAGGCTGCCTCCAAGCATGACGGGGAACTGCAAGAGAGCCAGCCACAAGGGCGCCC
ACGACTGGGGTCAAGGACTGAGGCTACCCCTTCCAAGTCCCTGTAGCAGCCCCACGTGGCCTCCGG
CCAAAGCCTAAGACTGTTTCTGAGCTGCTTCGGGAGAAGCGGCTCCGTGAGTCCCATGCCAAGAAGGCCA
CTCAGGCTCTTGGTCTCAACAGCCAGCTGCTGGTCTCCTCACCTGTGATCCTCCAGCCCCCTGCTGCTGCC
AGTCCCCATGGTTCCCAAGTAGTAGGCCCTGCAACGTCCAGTGTAGAACTCTGTACCTGTGGCGCCG
GTGATGGTCAGTTCAAGTCTTCTGGCTCCTGGCCGGTGGGTGGATCTCAGCCACAGACAAGCAGCCCC
CCAACCTACAGACCATTTCCCTAAATCCTCCCCAAAAGGGACCCAGGTTGCAGCCCCCTGCTGCTTTAG
GAGCCTAGCCTTAGCCCCGGGCAAGTCCCCACAGGCGGCATCTGAGTACTCTAGGACAGACCTTACC
ACATCCAGAAGCAGAGCCTGCCAAGGCTCCTGCCATTCTTCGAGCTGCTCCAGCCTCACTCAGCTGT
CTGTGCAGCCACCAGTAAGTGGACAGCCCTGGCAACCAAGTCCAGCCTGCCTGTCAACTGGGTTCTCAC
AACTCAGAAGTTGCTCTCTGTCCAAGTCCAGCTGTGGTGGGCTCCCCAGTCAGTGTGACCCCTGAG
CCAGTACAGACACAGAACCCAAGGGACCTCAGGGCCAGGAAATACCACCCACACCTGGGCCGAAAAGGC
AGCTTTGGACCTAAGTCTCCTTTCCAGGAAAGTGAGGCAGCCATCGTCACATGGCTGAAGGGGTGCCAA
GGTGTCTTTGTACCCCCGCTGGGGAGCAGGATGCCCTATCATCCCCCTTCCCTGTGCAGCTTGGGGCAT
TGTCCAGCCTCCTCCTCCAGAAACAGGACTTGGAGCAGAAGGCTTCTCTCTGGCGGCCAGCCAGGCAGC
TGGGGCCCAACCTGATCCCAAGGCTGGAGCCCTACAAGCTTCCCTGGAGCTGGTACAGAGGCAATTCCGG
GACAACCCAGCCTACCTCCTGCTAAAGACGCGTTTCTGGCTATCTTCTCCCTTCTGCATTCTGGCCA
CTCTGCCCCCAACAGCATCCCCACCACCTGTCACCAGACGTGGCTGTGGTTTCTGAGAGTGACAGTGA
AGACCTCGGTGACTTGGAGCTCAAGGATAGGGCTAGACAGTTGGACTGCATGGCCTGCAGAGTGAAGCA
AGCCCAGCAGCCCAGACCCTGTACAGAGACTCCAAGTCTGGTGGGTTTCTGCTCCCTCCCCTCTGG
ATGCTTCTGATGGCCTTATGACCTAACGTGCTCAGGACTCGACGTGCTCGGCATCCCCGGAGA

AGCGGACCGACGCGTACGCGGCCGCTCGAG - GFP Tag - GTTTAA

Protein Sequence: >MG211838 representing BC057031
 Red=Cloning site Green=Tags(s)

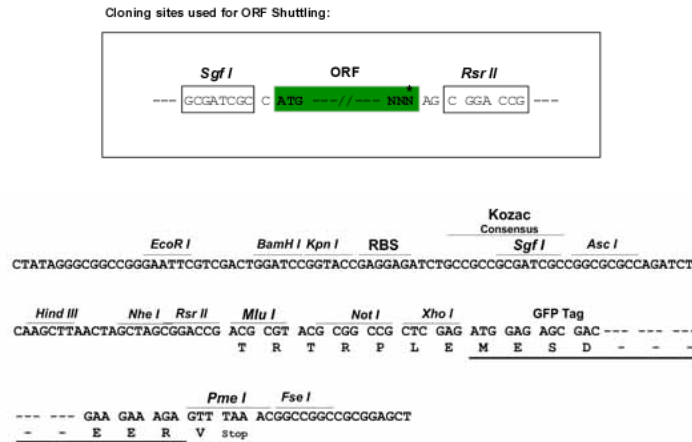
```

MYYQEVI REKLA EVSQ LLAQNQEQQEEILFDLSG TKCPKVKDGRSLPSYMYIGHFLKPYFKDKVTVGVGPP
ANEETREKATQG IKA FEQLLVTKWKHW EKALLRKS VVSDRLQRLLQPKLLKLEYLHEKQSRVSS ELERQA
LEKQI KEAEKEIQDINQLPEEALLGNRLDSHDWEKISNINFE GARS AEEIRKFWQSEHPSISKQEWSTE
EVERLKAIAATHGHLEWHLVAEELGTSRS AFQCLQKFKQQYNKTLKRKEWTEEDHMLTQLVQEMRVGNHI
PYRKIVYFMEGRDSMQLIYRWTKSLDPSLKRGFWAPEEDAKLLQAVAKYGAQDFKIREVPGRSDAQCR
DRYIRRLHFSLKKGRWNAKEEQQLIQLIEKYGVGHWARIASELPHRSGSQCLSKWKILARKKQHLQRKRG
QRP RHSSQWSSSGSSSSSEDYGS SSGSDGSSGSEN SDVELEASLEKSRALTPQQYRVPDIDLWVPTRLI
TSQSQREGTGCYPQHPAVSCCTQDASQNHHEGSTTVSAAEKNLQVPYETHSTVPRGDRFLHFS DTHSA
SLKDPACKSHTLMKERPKQPLLPSRSRSGDPGNNTAGPHLRQLWHGTYQNKQRRKRQALHRRL LKHRLLL
AVIPWVGDI NLA CTQAPRRPATVQTKADSI RMQLECARLASTPVFTLLIQLLQIDTAGCMEVVRERKSQP
PALLQPGTRNTQPHLLQASSNAKNNTGCLPSMTGEQTAKRASHKGRPRLGSCRTEATPFQVVAAPRGLR
PKPKTVSELLREKRLRESHAKKATQALGLNSQLLVSSPVILQPPLLVPVHGSPVVG PATSSVELSVPVAP
VMVSSSPSGSWPVGGISATDKQPPNLQTI SLNPPHKGTQVAAPAAFRSLALAPGQVPTGGHLS TLGQTST
TSQKQSLPKVLPILRAAPSLTQLSVQPPVSGQPLATKSSLPVNWVLT TQKLLSVQVPAVVGLPQSVMTPE
TIGLQAKQLPSPAKTPAFLEQPPASTDTEPKGPQGQEI PPTPGPEKAALDL SLLSQESEAAIVTWLKGCCQ
GAFVPLGSRMPYHPPSLCSLRALSSLLLQKQDLEQKASSLAASQAAGA QPDPKAGALQASLELVQRQFR
DNPAYLLLKTRFLAIFSLPAFLATLPNSIPTT LSPDVAVVSESDSEDLGDLELKD RARQLDCMACRVQA
SPAAPDPVQRAPSPGEVSAPSPLDASGLDDLNLVLRTRRARHSRR
  
```

SGP TRTRRLE - GFP Tag - V

Restriction Sites: SgfI-RsrII

Cloning Scheme:

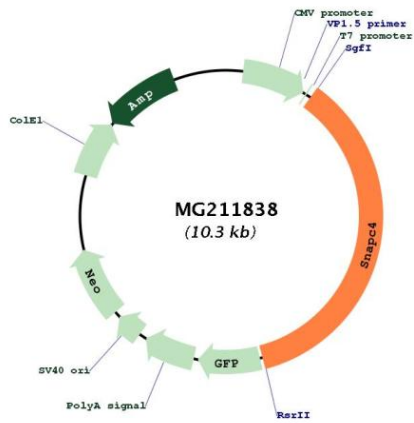


ACCN: BC057031

ORF Size: 3705 bp

OTI Disclaimer:	The molecular sequence of this clone aligns with the gene accession number as a point of reference only. However, individual transcript sequences of the same gene can differ through naturally occurring variations (e.g. polymorphisms), each with its own valid existence. This clone is substantially in agreement with the reference, but a complete review of all prevailing variants is recommended prior to use. More info
OTI Annotation:	This clone was engineered to express the complete ORF with an expression tag. Expression varies depending on the nature of the gene.
Components:	The ORF clone is ion-exchange column purified and shipped in a 2D barcoded Matrix tube containing 10ug of transfection-ready, dried plasmid DNA (reconstitute with 100 ul of water).
Reconstitution Method:	<ol style="list-style-type: none">1. Centrifuge at 5,000xg for 5min.2. Carefully open the tube and add 100ul of sterile water to dissolve the DNA.3. Close the tube and incubate for 10 minutes at room temperature.4. Briefly vortex the tube and then do a quick spin (less than 5000xg) to concentrate the liquid at the bottom.5. Store the suspended plasmid at -20°C. The DNA is stable for at least one year from date of shipping when stored at -20°C.
RefSeq:	BC057031.1
RefSeq Size:	4473 bp
RefSeq ORF:	3707 bp
Locus ID:	227644
Cytogenetics:	2 A3
Gene Summary:	Part of the SNAPc complex required for the transcription of both RNA polymerase II and III small-nuclear RNA genes. Binds to the proximal sequence element (PSE), a non-TATA-box basal promoter element common to these 2 types of genes. Recruits TBP and BRF2 to the U6 snRNA TATA box (By similarity).[UniProtKB/Swiss-Prot Function]

Product images:



Circular map for MG211838