

Product datasheet for **MG211835**

Rbp3 (NM_015745) Mouse Tagged ORF Clone

Product data:

Product Type:	Expression Plasmids
Product Name:	Rbp3 (NM_015745) Mouse Tagged ORF Clone
Tag:	TurboGFP
Symbol:	Rbp3
Synonyms:	Irbp; Rbp-3
Mammalian Cell Selection:	Neomycin
Vector:	pCMV6-AC-GFP (PS100010)
E. coli Selection:	Ampicillin (100 ug/mL)
ORF Nucleotide Sequence:	>MG211835 representing NM_015745 Red=Cloning site Blue=ORF Green=Tags(s)

TTTTGTAATACGACTCACTATAGGGCGGCCGGAATTCGTCGACTGGATCCGGTACCGAGGAGATCTGCC
GCC**CGATCGCC**

ATGATGAGAGAATGGGTCTGGTTTTGTCCACACTGCTCTGGGTTCCGGCTGGTCCCACGCACCTTTCC
AGCCAAGCCTGGTACTGGATATGGCAAGATCCTCTGGATAACTACTGTTCCCTGAGAACCTGATGGG
AATGCAAGCAGCCATTGAGCAGGCATGAAGAGTACAGAGATTCTGGGCATCTCAGACCCTCAGACGCTG
GCCAAGTCTGACAGCTGGAGTCCAGAGTTCTTGTAGTGACCCAGACTCTTCATCTTACGAGCCCA
GTACCCTCGAGGCTCCCCAGCAAGCACCAGTGCTCACCAACCTCACCCGAGAAGAAGTCTGGCCAGAT
ACAGAGGAACATCCGCCATGAGGTTCTTGAGGGCAACGTGGGCTACCTACGAGTGGACGACTCCCTGGC
CAAGAGGTACTGAGCGAGCTGGGGGAGTCTTAGTGAGCCATGTGTGGAGGCAGCTCATGAGCACCTCT
CCTTGGTCTAGATCTCCGGCACTGCTCTGGCGCCACTTCTCTGGGATCCCTTATGTCATCTTACTT
GCACCCTGGGAACACGGTTCATGCACGTGGACACCGTCTACGATCGGCCCTCAACACCACCACAGAGATC
TGGACCTTGCCCGAGGTCCTCGGGGAGAGATACAGTGCTGACAAGGATGTGGTGGTCTCACCAGCGGAC
ACACTGGGGGAGTCGCAGAGGACATTGCCTACATCCTGAAGCAGATGCGGCGCCATCGTGGTGGGCGA
GCGGACGAGGGTGGGGCCCTGGACCTCAGAAGCTGAGAATAGGCCAGTCCAACCTCTCTCACAGTG
CCTGTGTCAGGTCCTGGGACCTTAGTGGAGGTGGCCAGACATGGGAAGGCAGTGGCGTGTGCCTT
GTGTGGGACCCCTGCAGAGCAAGCCCTAGAAAAGGCCCTGGCCATCCTCACCTGCGTCTGTCCTGCC
AGGGGTTGCTCCGACTTCAGGAAGCCCTCCAGGACTATTACACATTAGTGGACCGAGTGCCGGGCTG
CTGCACCCTGGCCAGCATGGACTACTCAGCTGTGGTCTCTGAAGAGGACCTGGTGACAAAGCTCAATG
CTGGCTTGCAAGGCTGTGTCGGAGGATCCAGGCTCCTGGTGGGGCCACCGGACCCAGAGACTCCTCCTC
AAGACCTGAGACTGGGCTAATGAGTCCCCAGCAGCCACCCCGAGGTGCCACGGAAGAAGATGCCCGG
AGGGCCCTGGTGGACTCTGTGTTTCAGGTGTCCGTGCTGCCGGGCAATGTGGGCTACCTGCGCTTGTATA
GATTTGCAGACGCCGCTGTGCTGGAGACGCTGGGCCCTTACGTGCTGAAGCAGGTATGGGAGCCTTGTCA
GGACACGGAACACCTCATCATGGACCTGCGTCATAACCCCTGGGGTCCGTCTCGCGGATGCCTCTGGT



CTGTCCTACTTCCAGGGACCTGAGGCCGACCTGTACGGCTCTTTACCACCTATGATCGCCGCACCAACA
TCACCCAGGAGCACTTCAGCCATCGGGAGTTGCTAGGCCAACGCTATGGTAACCAGCGTGGAGTGTACCT
GCTTACTAGCCACAGGACTGCCACAGCTGCCGAAGAGTTTGCCTTCTCATGCAGTCCCTGGGCTGGGCC
ACACTGGTCGGCGAAATCACCGCGGTAGCCTGCTCCACACCTGCACGGTGCACCTGCTGGACTCGCCCC
AGGGTGGCTGGCGCTCACAGTACCGGTACTTACTTTTATTGACAACCACGGTGAAGGCTGGCTGGGGG
TGGGTGGTACCTGATGCCATCGTGTGGCTGAGGAGGCCTTAGAGAGAGCTCAGGAGGTGCTGGACTTC
CATCGAGTCTGGGCGCCTTGGTAGAGGGCACGGTGCCTGCTGGAGGCTCACTATGCCCGCCAGAGAGA
TCGCACAGCGGGCCAGAGCTCTCCTGCAATCTAAGTTGGCCCAAGGAGCCTACCGCACAGCTGTGGACTT
GGAGTCACTGGCCTCACAGCTCACTGCTGACCTTCAGGAGGTATCTGAGGACCACCGCCTGCTGGTATTC
CATAGCCCTGGGAGCTTGTGGCAGAGGAGTCCCTCTACCGCCCCCTGCCGTTCCCTCCCAGAGGAAC
TCTCTATCTCATAGAGGCTCTGTTCAAACGGATGTGCTACCGGCCAGCTCGGCTACTTGCCTTTTGA
CGCCATGGCTGAGCTAGAGACAGTAAAGGCCATTGGCCCTCAGCTAGTACAGCTGGTGTGGCAGAGGCTG
GTGGACACAGCTGCGCTGATTGTTGACCTGCGCTACAACCCTGGCAGCTACTCTTCTGCCGTTCTCTAC
TCTGCTCTATTTTTTTGAGGCGGAGCCCCGCCAGCACCTCTACTCTGTTTTTACAGGGCGACATCTAG
GGTCACAGAAATATGGACCCTGCCGCTGGTTGCTGGGCAACGCTATGGATCCCATAAGGACCTATACATC
CTCATGAGCCACACTAGTGGCTCTGCAGCCGAGGCCTTTGCTCACACTATGCAGGACCTACAGCGGGCCA
CCGTTATAGGAGAGCCCACAGCTGGAGGGGCACTCTCCGTGGGCATCTACCAGGTGGGCAACAGCCCTT
ATATGCCTCCATGCCTACTCAGATGGCCCTGAGTGCCAGCACCGGTGAGGCCTGGGACTTGGCTGGTGTG
GAACCTGACATCACTGTGCCATGAGTGAGGCCCTTTCCACAGCCAGGACATAGTGGTCTGCCTGCTA
AGGTGCCCACTGTTCTGCAGACAGCTGGGAAACTAGTGGCTGATAACTATGCATCCCCTGAATTGGGGC
CAAGATGGCTGCCAAGCTAAGCGGTCTGCAGAGCCGCTATGCAAGGGTGACTTCAGAAGGGGCTTGGCT
GAGATGCTGGGGCAGATCTGCAAATACTCTCTGGGACCCACACCTGAAGACAGCACACATTCCAGAGG
ATGCCAAAGACCGAATTCTGGAATCGTGCTATGCAGATTCCTCCCAGAACTTTGAAGACCTGAT
CAAGTTTTCTTCCACACAAATGCTTGGAGGACAACATTGGCTACTTGAGATTGACATGTTCCGGGAC
TGCAGCTGCTTACCCAGGTCTCCGAGCTGCTGGTAGAACACATCTGGAAGAAGATTGTACACACTGATG
CCCTGATCATCGACATGAGGTTCAACCTTGGCGGCCACCTCCTCCATCTCAGCCTTGTGCTCTTACTT
CTTTGACGAGGCACCTCCATTCTGCTGGACAAGATCTACAACCGGCCAATGACTCGGTGAGGAACTT
TGGACCCACACTCAGCTCACAGGTGAACGATATGGCTCCAAGAAGAGCGTAGCCATCCTGACCAAGTGTG
TGACAGCCGGTGCCGCCGAGGAATTTACTTACATCATGAAGAGGCTGGGCCGGCCCTGGTCATCGGTGA
AGTGACAAGTGGAGTTGCCAACCCGACAGCTACCACGTGGATGACACCCATCTCTACATCACCATC
CCTACAGCTCGCTCTGTGGCGCTGAAGACGGAAGTTCTGGGAAGGGTGGGCGTGACACCTAATGTAG
TTGTCTTTCAGAATTGGCCCTTACCAGAGCCAAGGAGATACTCCAGCAGGCCCTGAGGGG

ACGCGTACGCGGCCGCTCGAG – GFP Tag – GTTTAA

Protein Sequence: >MG211835 representing NM_015745
 Red=Cloning site Green=Tags(s)

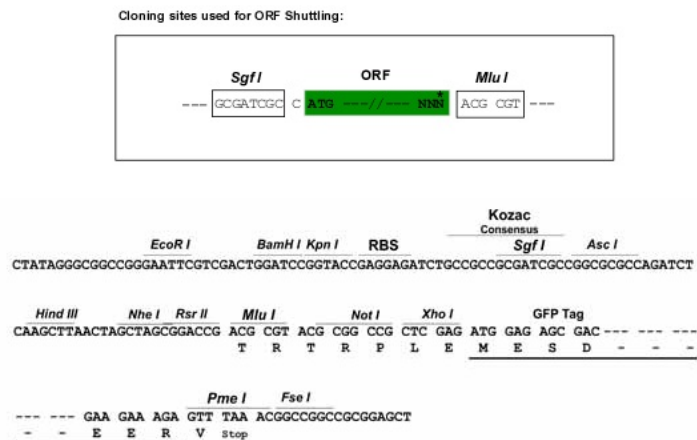
```
MMREWVLVLSTLLWVPAGPHTLFPQSLVLDMAKILLDNYCFPENLMGMQAAIEQAMKSHEILGISDPQTL
AQVLTAGVQSSSLSDPRLFISYEPSTLEAPQQAPVLTNL TREELLAQIQRNIRHEVLEGNVGYLRVDDLPG
QEVLSELGEFLVSHVWRQLMSTSSLLDLRHCSGGHFSGIPYVISYLHPGNTVMHVDTVYDRPSNTTTEI
WTLPEVLGERYSADKDVVVLTSGHTGGVAEDIAIYLKQMRRAIVVGERTEGGALDLQKLRIQSNFFLTV
PVSRSLLGPLGGGQQTWEGSGVLPCVGTPAEQALEKALAILTLRRALPGVVLRLQEALQDYYTLVDRVPL
LHHLASMDYSAVVSEEDLVTKLNAGLQAVSEDPRLLRATGPRDSSSRPETGPNESPAATPEVPTEDAR
RALVDSVFQVSVLPGNVGYLRFDRFADAADVLETLGPYVLKQVWEPLQDTEHLIMDLRHNPGGPSSAMPLV
LSYFQGP EAGPVRLFTTYDRRTNITQEHF SHRELLGQRYGNQRGVYLLTSHRTATAAEAFALMQSLGWA
TLVGEITAGSLLHTCTVPLLDSPQGLLALVTPVLTFDNHNHGEAWLGGGVVPAIVLAAEALERAQEVDF
HRS LGALVEGTGRLL EAHYARPEIAQRARALLQSKLAQGAYRTAVDLESASQLTADLQEVSEDRHLLVF
HSPGELVAEEVPLPPP AVPSPEELSYL IEALFKTDVLPQGLGYLRFDAMAELETVKAIGPQLVQLVWQRL
VDTAALIVDLRYNPGSYSSAVPLLC SYFFEAEP RQHLYSVFDRATSRVTEIWTLPLVAGQRYGSHKDL YI
LMSHTSGSAAEAF AHTMQDLQRATVIG EPTAGGALSVGIYQVGN SPLYASMP TQMALSASTGEAWDLAGV
EPDITVPMSEALSTAQDI VVLRAKVPTVLQTAGKLVADNYASPELGAKMAAKLSGLQSR YARVTSEGALA
EMLGADLQILSGDPHLKTAHIPEDAKDRIPGIVPMQIPSP E VFEDLIKFSFHTN VLEDNIGYLR FDMFGD
CELLTQVSELLVEHIWKKIVHTDALIIDMRFN LGGPTSSISALCSYFFDEAPPILLDKIYNRPND SVSEL
WHTQLTGERYGSKKSVAILTSGVTAGAAEEFTYIMKRLGRALVIGEVTSGGCQP PQT YHVDDTHLYITI
PTARSVGAEDGSSWEGVGT PNVVVVSELALTRAKEILQQALRG
```

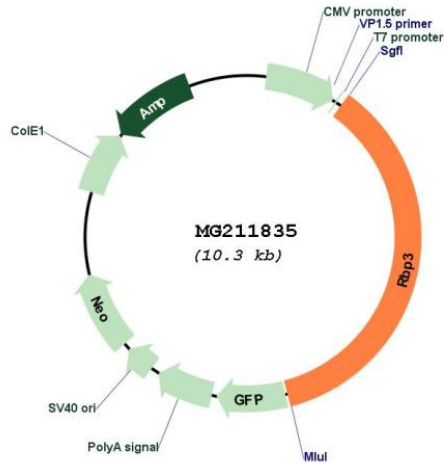
TRTRPLE - GFP Tag - V

Restriction Sites:

Sgfl-MluI

Cloning Scheme:



Plasmid Map:


ACCN: NM_015745

ORF Size: 3702 bp

OTI Disclaimer: The molecular sequence of this clone aligns with the gene accession number as a point of reference only. However, individual transcript sequences of the same gene can differ through naturally occurring variations (e.g. polymorphisms), each with its own valid existence. This clone is substantially in agreement with the reference, but a complete review of all prevailing variants is recommended prior to use. [More info](#)

OTI Annotation: This clone was engineered to express the complete ORF with an expression tag. Expression varies depending on the nature of the gene.

Components: The ORF clone is ion-exchange column purified and shipped in a 2D barcoded Matrix tube containing 10ug of transfection-ready, dried plasmid DNA (reconstitute with 100 ul of water).

Reconstitution Method:

1. Centrifuge at 5,000xg for 5min.
2. Carefully open the tube and add 100ul of sterile water to dissolve the DNA.
3. Close the tube and incubate for 10 minutes at room temperature.
4. Briefly vortex the tube and then do a quick spin (less than 5000xg) to concentrate the liquid at the bottom.
5. Store the suspended plasmid at -20°C. The DNA is stable for at least one year from date of shipping when stored at -20°C.

RefSeq: [NM_015745.3](#)

RefSeq Size: 5276 bp

RefSeq ORF: 3705 bp

Locus ID: 19661

UniProt ID: [P49194](#)

Cytogenetics: 14 20.8 cM

Gene Summary:

IRBP shuttles 11-cis and all trans retinoids between the retinol isomerase in the pigment epithelium and the visual pigments in the photoreceptor cells of the retina.[UniProtKB/Swiss-Prot Function]