

Product datasheet for **MG211819**

Evc2 (NM_145920) Mouse Tagged ORF Clone

Product data:

Product Type: Expression Plasmids
Product Name: Evc2 (NM_145920) Mouse Tagged ORF Clone
Tag: TurboGFP
Symbol: Evc2
Synonyms: 1110017L09Rik; Lbn; limbin
Mammalian Cell Selection: Neomycin
Vector: pCMV6-AC-GFP (PS100010)
E. coli Selection: Ampicillin (100 ug/mL)
ORF Nucleotide Sequence: >MG211819 representing NM_145920
 Red=Cloning site Blue=ORF Green=Tags(s)

TTTTGTAATACGACTCACTATAGGGCGGCCGGAATTCGTCGACTGGATCCGGTACCGAGGAGATCTGCC
 GCC**CGATCGCC**

ATGGGGGCGACGGGCCACGGGCGCTGGGGGACGAGCCACGTGGGTGCTGGCTGGGAATATCCTGGCCG
 CTGCCCTGGTACTGGGCTCGGGTCCGCGTGCACTTCCACCATCCTCCCTGCCCTGGGCCAGGGTCACC
 ATCTCGGCCCGCCAGCAGGACCCTGGCAAGCTCGCAGTACAGCGATATTTCAAGAGAAGCCCGAGGT
 CCCTTTGAGAATGGAGTGATATTTCAAAAATGCTCACTGGTGTCTGGGCAGAGCGAATCGCAGACCATGC
 ACGTGCAGCTGTCCGTGAACAACACCAGGACGCCACATCAGTCAACCTTTCGAACCTGCTCGTGTAGA
 TGAGATCACTGGCCTTGCTGTGAAGGAGTCGCCTGGAAAATAACTCAGGATGGAATCCAGACTTTCAGA
 AAGAGCTTTCTGCAAGTGGGAGAATGCTACTCTGTGAGCTACACAGCCTCGCTGGACCCACAGCCCTTG
 GGACTGGGAGAGCCTGGATCTTCTGCCCGGCTCATCTTTCAGAGCCCTCACAGAACAGAAGTCAAGT
 AAAAGCCCTTTACCATCACAGTGGAAAGAAAAGATAATGGTTCTTCTAACCATGGTCTTCACGCAGCA
 GGCTTCATCGCAGCCTTCTCATCTCCCTCCTGACCGTGGCAGCCCTGTTCTTCTGGCGAGGGGTC
 GATGTCTGCAGGGAGGCATGCTGTCCAGATGCCGATTGAGCATCCTGAGAACAAGCTGGAGCCCTCGCC
 CTTACCTCTGCTAACGGTGTGAGCCAGGACCTTCCCTCAATGACCAAGTGGTTGCCATCCTGACTTCT
 GAGGAGCCTGGGAGCATGCTTCAAGCCCTAGAAGAGTTGGAGATCGCAACCCTGAATCAGGCAGATGCGG
 ATCTGGAGGCTTGTGAAACCAGATTAGTAAGGACATATTGCCCTTTTGATGAAGAATCTGGTCAGCGG
 TGGTCACCTCTCTCCGAAACAGAAAGGAAGATGGCCGCTGCTTTCAAAAAGCAGTTTCTGCTGTTGGAA
 AATGAAATACAGGAGGAGTATGAGCGGAAGATGTTGGCACTGACGGCAGAGTGTGACCTAGAGATGAGGA
 AGAAGACAGAAAACAGTACCAGAGGGAGATGGTGGCCATGGAGGAAGCAGAAGAGGTGTTGAAGAGAGT
 TAGCGAGAGGTCTGCTGCCGAGTGCAGCAGCCTTTTGGGACCCTCCATGGGCTGGAGCAGGAGGACATG
 CAGAGGTCCTTACTCTGGACCAAGCCGAGGACTTTGCTCAAGCACACAGGCAGCTGGCTGTTTTCCAGA
 GGAATGAATTACACAGCATCGTCTATACCCAGATACAGAGTGTCTCCTCAAAGGGGAAGTGAAGCCTGA
 GGTGGCTAAAATGATGCTGCAAGACTACTCTAAAACACAGGAGAGTGTAGAAGAGCTGATGGACTTCTTC



[View online »](#)

CAGGCCACCAAGCGATACCATCTCAGCAAGAGGTTTGGCCACAGAGAGTACCTGGTCCAGAGACTGCAGG
CCATGGAGACCCGGGTGCAAGGGCTGCTGAACACCCGGCTACCCAGCTAACAAGCCTCATCCATAAACA
TGAGAGGGCTGGCTACTTGGATGAAGATCAGATGGAAACGCTATTGGAGCGTGCACAGACAGAAACCTTT
TCTATAAAACAGAAGCTGGACAATGACTTAAAGCAGGAAAAGAAAAGGCTCCACCAGAGATTAATAACCA
GGAGGCGCGAGAGCTTCTGCAGAAGCACAGGAGCAGCAGAAGGAGCAGGTGTCCCTTGGCGAGGCCTC
CAGCACCGCGGAGGACGCAGTCCAGTACCTGCACCAGTGGAGGAGCGTGATGGCCGAGCACACCCGTGC
CTGGAGGAGCTGCAGGAACGTCTGGACCAGGCTGCCCTGGATGACCTCCGGTCTGACTGTGTCGCTGT
CGGAGAAAAGCCACGGAAGAGCTGAGGCGCTGCAGAGCACGGCCATGACACAGGAGCTGCTGAAGCGCAG
TGCTCCCTGGCTTCTCCTGCAGCAGATCTTAGAGGAGCACAGCCGGGAGTCTGCGCTCGCACCACGCAA
CTGGAGGAGAGGAGAGGGAACGTGGCCAGGAGCTGGTGCAGGGCGTGAGGCAGAGGCTACAGCAGGATG
CACTGGAGGCCTACACGGAAGAGCAGGCAGAGCTGAGGCACTGGGAGCACTTGGTGTTCATGAAACTCTG
CTGTGCGCCATCTCATTGTCTGAAGAAGACCTGCTCCGGTAAGGCAGGAGGCACAGGGCTGCTTCAGC
CAGCTGGACCGGAGCTTGGCCCTCCCAGAGTCCGTGCACGAGTGTTCAGCAGCAGGCGCAGATGGCT
GGCGGGAAGCAGAGTTTCGAAACTGGACCAGGCCCTGGCTGCGCTGAGCTGCAGTCCAAGGCAAGAAA
GCTGCGTTCCAAGGCAGAGGCAAGGCCGATCTTCTGAAGAAGAACCTGGAGGATAAGATCCGACTATTC
GAGGAGCGGGCCCTGTAGAAGTGGCTGACCAGGTGCGAGGGGAATTGCTCCAAGAGAGGGTCCAGAGGC
TGGAGGCCAGGAGGCGCACTTTGCTGAGTCACTTGTGGCTCTGCAGTTCAGAAGTGGCCCGGCTGC
TGAGACCTCTCAGTCTACACCGCCCTGCTCAGCATTCAAGACCTGCTGCTGGGGAGCTGAGTGAAGTCG
GAGACCTGACCAAGTACGCTGTGTGCAGATCTGGAGTCCCACAGGCCGAGCTGCAGGAGCTGCAGG
AGCTGGAGAGGAAGTGGAGGACCAGCTGGTGCAGCAGGAAGAGGCCGAGCAGCAGCGGGTCTGGAGAG
CTGGCAGCGGTGGGCGCCGATGGACCTGGGCTGAGCGAACCTGAGGAGATGGATCCTGAAAGGCAGGTC
TCTGCCATCCTGCGCAAGCCCTGAACAAGGGCCAGAAGCTGCTGGAGCAGCATCAGCAGAGGGTGAGAG
AGGAGTGGCAGAACGGTGGGTGCTGGAAGATTCTCTGAAAGCATTGAAGCTGACACCATGGCCAGCCT
TTGCAGCCAGGGACTGAGGCTGGTGTACCTCTCAAGGATGACAATGGTACCAGGCAGCACACTACTG
CGACTCCTGAGTGTGGTCTCCAGCGCTTACAGCCTCAGCTACTGGCCCTGCTGGACGCACTCAGTGA
AGAAGCACTCCGACCACACAGCTGAGAATGAGAGCAGTGGTGAAGCAGGCTCAGGCAGAGCAGAGCAAGAG
GAGGAAACACCAAGTTTGGTGAAGTTTTGGACAGCAGATTCAGAGCAGATCTGGTGAAGTCAAGGACTG
GAGAGGATGCTCTGGGCCCGCCAGAAGAAGGAGCGCATATTGAAGAAGATATATGTTCCCGTCCAGGAGA
GGGTGATGTTTCTGGAAAAGGAAGCTGGCCACACCTGTCCCTAGAACCATTGGAGAAGTGGCTCCCAT
CCCCATCACTGGGCGAGCGCTATGGACATATTAACACGGGAGAAAAGATCTTTGTATTGAGAAGCCCA
AGGGAGCCGAGATCTTTGCGTGTCTCCAGGAGGAAAAAGATTTCTGAATGCCAAGAAGGCCA
ACAGGGCCTTGGCTTGGAC

ACGCGTACGCGGCCGCTCGAG - GFP Tag - GTTTAA

Protein Sequence: >MG211819 representing NM_145920
 Red=Cloning site Green=Tags(s)

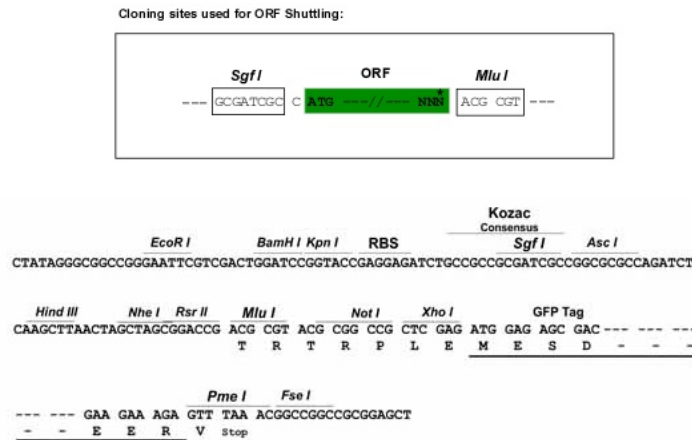
MGATGPTGAGGRATWVLAGNILAAALVLGSGPRALPPSFPALGPGSPSRPGPAGPWASSQYSDISREARG
 PFENGVIFQKCSLVSGQSESQTMHVQLSVNNTTRPTSVNLSNLLVLDEITGLAVKESPGNNTQDGIQTFR
 KSFLQVGEYCYSVSYTASLDPTALGTGESLDLPARLIFQSPSQNRTQLKAPFTITVEEKIMVLPNHGLHAA
 GFIAAFLISLLTVAALFFLARGRCLQGGMLSRCRIQHPENKLEPSPFTSANGVSQDLSLNDQVVAITLS
 EEPGSMQLALEELEIATLNQADADLEACRNQISKDIIALLMKNLVSGHLSPQTERKMAAAFKKQFLLLE
 NEIQEEYERKMLALTAECDLEMRKKTENQYQREMVAMEEAEVLRVRSERSAAECSSLLRTLHGLEQEDM
 QRSLTLDQAEDFAQHRQLAVFQRNELHSIVYTIQSAVSKGELRPEVAKMMLQDYSKTQESVEELMDDFF
 QATKRYHL SKRF GHREYL VQRLQAMETRVQGLLNTAATQLTSLIHKHERAGYLDEDQMETLLERAQTET
 SIKQKLDNDLKQEKRLHQRLITRRRRELLQKHKEQQEQVSLGEASSTAEDAVQYLHQWRSVMAEHTAA
 LEELQERLDQAALDDLRLVTVSLSEKATEELRRLQSTAMTQELLKRSAPWFLQQLIEEHSRESAARTTQ
 LEAEERERGOELVQGVQRQLQDDALEAYTEEQAE LRHWEHLVFMKLCCAAISLSEEDLLRVRQEAQGCFS
 QLDRSLALPRVRARVLQQQAQMAWREAEFRKLDQALAAPELQSKARKLRKGRGKADLLKKNLEDKIRLF
 EERAPVELADQVRGELLQERVQRLAEQEAHFAESLVALQFQKVARAAETLSVYTALLSIQDLLLLGELSES
 ETLTKSACVQI LESHPELQELQELERKLEDQLVQEEAEQQRVLESWQRAADGPGLPSEPEEMDPERQV
 SAILRQALNKGQKLLLEQHQRVREEWQNGAVLEDSLESIEADTMASLCSQGLRLVSYLSRMTMVPGSTLL
 RLLSVVLPAA SQPQLLALLDAVSEKHS DHTAENESSGEQAQAEQSKRRKHQVWWKVLDSRFRADLVSQGL
 ERMLWARQKKERILKKIYVPVQERVMPGKGSWPHLSLEPIGELAPI PITGADAMDILNTGEKIFVFRSP
 REPEISLRVPPRRKKNFLNAKKANRALGLD

TRTRPLE - GFP Tag - V

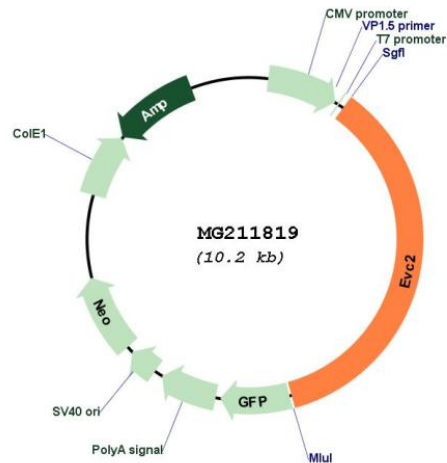
Restriction Sites:

Sgfl-MluI

Cloning Scheme:



Plasmid Map:



ACCN: NM_145920

ORF Size: 3660 bp

OTI Disclaimer: The molecular sequence of this clone aligns with the gene accession number as a point of reference only. However, individual transcript sequences of the same gene can differ through naturally occurring variations (e.g. polymorphisms), each with its own valid existence. This clone is substantially in agreement with the reference, but a complete review of all prevailing variants is recommended prior to use. [More info](#)

OTI Annotation: This clone was engineered to express the complete ORF with an expression tag. Expression varies depending on the nature of the gene.

Components: The ORF clone is ion-exchange column purified and shipped in a 2D barcoded Matrix tube containing 10ug of transfection-ready, dried plasmid DNA (reconstitute with 100 ul of water).

Reconstitution Method:

1. Centrifuge at 5,000xg for 5min.
2. Carefully open the tube and add 100ul of sterile water to dissolve the DNA.
3. Close the tube and incubate for 10 minutes at room temperature.
4. Briefly vortex the tube and then do a quick spin (less than 5000xg) to concentrate the liquid at the bottom.
5. Store the suspended plasmid at -20°C. The DNA is stable for at least one year from date of shipping when stored at -20°C.

RefSeq: [NM_145920.3](#), [NP_666032.1](#)

RefSeq Size: 4111 bp

RefSeq ORF: 3663 bp

Locus ID: 68525

UniProt ID: [Q8K1G2](#)

Cytogenetics: 5 B3

Gene Summary:

Component of the EvC complex that positively regulates ciliary Hedgehog (Hh) signaling (PubMed:21356043, PubMed:24582806). Plays a critical role in bone formation and skeletal development (PubMed:21356043). May be involved in early embryonic morphogenesis (PubMed:21356043).[UniProtKB/Swiss-Prot Function]