

## Product datasheet for **MG211814**

### Smc3 (NM\_007790) Mouse Tagged ORF Clone

#### Product data:

Product Type:	Expression Plasmids
Product Name:	Smc3 (NM_007790) Mouse Tagged ORF Clone
Tag:	TurboGFP
Symbol:	Smc3
Synonyms:	Bamacan; Cspg6; HCAP; Mmip1; SMC-3; SmcD
Mammalian Cell Selection:	Neomycin
Vector:	pCMV6-AC-GFP (PS100010)
E. coli Selection:	Ampicillin (100 ug/mL)
ORF Nucleotide Sequence:	>MG211814 representing NM_007790 Red=Cloning site Blue=ORF Green=Tags(s)

TTTTGTAATACGACTCACTATAGGGCGGCCGGAATTCGTCGACTGGATCCGGTACCGAGGAGATCTGCC  
GCC**CGATCGCC**

ATGTACATCAAGCAGGTGATCATCCAGGGCTTCCGAAGTTACCGAGACCAACAATTGTAGATCCCTTCA  
GCTCCAAACATAATGTCATCGTGGGCAGAAATGGCTCTGGAAAAAGCAACTTCTTTTATGCAATCCAGTT  
TGTTCTCAGTGATGAATCAGCCATCTTCGTCCAGAGCAGCGATTGGCTTTGTTGCATGAGGGTACAGGT  
CCTCGTGTATTCTGCTTTTGTGAAATCATTTCGACAATTCGGACAACCGGTTACCAATTGATAAAG  
AGGAAGTTTCACTTCGAAGAGTTATTGGTGCCAAAAGGATCAGTATTCCTAGATAAGAAGATGGTCAC  
GAAAAATGATGTGATGAATCTCCTTGAAAGTGCTGGGTTTTCCAGAAGTAACTCTTATTACATTGTTAAA  
CAAGGAAAGATCAACCAATGGCAACGGCACCAGATTCTCAGAGATTAAGCTGTTGAGAGAAGTAGCTG  
GTACTAGAGTGTATGATGAACGGAAAGAAGAAAGCATCTCCCTGATGAAAGAAACAGAGGGCAAACGGGA  
AAAGATCAATGAGTTGTTGAAGTACATTGAAGAGCGCCTGCACACTCTAGAGGAGGAGAAGGAGGAGCTG  
GCCAGTATCAGAAGTGGGATAAGATGAGGCGCCCTGGAGTACACCATCTACAACCAGGAGCTCAACG  
AGACGCGCGCTAAGCTCGACGAGCTTCTGCTAAGCGAGAAACGAGTGGAGAGAAATCCAGACAATAAG  
GGATGCCAGCAGGATGCAAGAGACAAAATGGAGGATATTGAGCGCCAGGTTAGAGAATGAAAAACAAA  
ATTTAGCCATGAAAGAAGAAAAAGAACAGCTTAGTGCTGAAAGACAAGAGCAGATTAAGCAAAGGACCA  
AGTTGGAGCTTAAAGCCAAGGATTTACAAGATGAGCTGGCGGGCAACAGTGAACAGCGGAAACGTTTATT  
AAAAGAGAGGCAGAAAGCTGCTTAAAAAATAGAAGAAAAGCAGAAAGAACTGGCAGAAACAGAACCTAAA  
TTCAACAGCGTAAAAAGAAAAAGAGCGAGGAATTGCGAGGTTGGCTCAAGCTACACAGGAAAGAACTG  
ATCTTTATGCAAAGCAGGGTCGAGGAAGCCAGTTTACGTCAAAAGAAAGAAAGGGATAAATGGATTA  
GAACTGAAGTCTTTAGATCAGGCAATTAATGATAAGAAAAGACAGATTGCTGCTATTACAAGGATTTG  
GAGGATACCGAGGCAAAATAAGAGAAAAATCTGGAGCAATATAAATTAATGGATCAGGATCTCAATGAAG  
TCAAAGCTCGAGTTGAAGAACTGGACAGAAAATATTATGAAGTAAAAAATAAGAAAGATGAACTACAAG  
TGAAGAAATTAATTGTGGAGAGAGGAGAAATGCAGAACAAACAGCACTTGTCTGCTAAAAGAGAAGACCTT



GAGAAGAAGCAGCAACTTCTTAGAGCGGCAACAGGAAAGGCCATTTTAAATGGAATAGATAGCATTAAACA  
AAGTGCTAGAACATTTTCGGCGAAAAGGTATAAACCCAGCATGTTCAAATGGCTACCATGGCATCGTAAT  
GAATAACTTTGAGTGTGAACCAGCTTTCTATACTTGTGTGGAAGTCACTGCTGGTAAACAGGTTATTTTAT  
CACATTGTTGATTCAGATGAAGTCAGCAGCAAAAATTTTAAATGGAGTTCAATAAAATGAATCTTCTCGGAG  
AGGTGACTTTCTGCCTCTTAACAAGTTAGATGTGAGAGATACTGCCTATCCTGAACTAACGATGCTAT  
TCCTATGATCAGTAAGCTGAGGTACAATCCCAGATTTGACAAAGCTTTCAAACATGTATTGGAAAGACA  
CTCATCTGTCGGAGCATGGAAGTTTCAACTCAGCTGGCCCGGCCCTTCACTATGGACTGTATTACTTTGG  
AAGGTGATCAAGTCAGCCATCGAGGTGCTCTGACTGGAGGTTATTACGACACAAGAAAGTCTCGACTTGA  
GTTACAGAAAGACGTTAGGAAGGCAGAGAGGAGCTGGGTGAGCTGGAGGCTAAGCTCAATGAAAACCTA  
CGCAGGAACATTGAAAGGATTAATAATGAAATTGACCAGTTGATGAACCAAATGCAGCAGATAGAGACCC  
AACAAAGAAAATTTAAAGCATCCAGAGATAGCATATTATCAGAGATGAAGATGCTAAAAGAGAAGAGACA  
GCAATCAGAAAAGACCTTCATGCCAAAGCAACGTAGCTTACAAGCTTGGAGGCAAGTCTGCATGCTATG  
GAGTCCACCAGAGAGTCACTGAAAGCGGAGCTAGGAACGGATTTGCTTTCTCAACTCAGTCTGGAAGATC  
AGAAAAGAGTCGACGCTCTGAATGATGAAATCCGTGAGTGCAGCAGGAAAACAGACAGCTGCTAAATGA  
AAGAATTAAGTGAAGGCATTATTACTCGAGTAGAGACTTACCTGAATGAGAATCTGAGGAAACGCTTG  
GACCAAGTAGAACAGGAACCTTAATGAACTGAGAGAGACAGAAGGTGGTACTGTTCTTACTGCCACAACAT  
CAGAACTTGAAGCTATTAATAAAAAGAGTAAAAGATACTATGGCAAGATCAGAAGATTTGGACAATCCAT  
TGACAAAACAGAAAGCTGGAAATTAAGAGCTCCAGAAAAGTATGGAGCGCTGGAAAAATATGGAGAAAAGAA  
CACATGGATGCCATAAATCATGATACTAAAGAGCTGGAGAAGATGACCAACCGGCAAGGCATGCTGTTGA  
AGAAGAAGGAGGAGTGTATGAAGAAGATCCGGGAGCTGGGGTCCCTCCCCAGGAAGCGTTTGAGAAGTA  
CCAGACACTGAGCCTGAAGCAGTTGTTTCGAAAAGTGGAGCAATGCAACACAGAGTTAAAGAAGTACAGC  
CACGTGAACAAAAAGGCTCTAGATCAGTTTGTGAATTTCTCTGAGCAGAAGGAAAAGCTGATAAAGCGGC  
AAGAGGAATTGGATAGAGGCTACAAATCAATCATGGAATTGATGAATGTACTTGAACCTTAGAAAAATATGA  
AGCTATTCAGTTAACTTTCAAACAGGTATCTAAGAAGTTCAGTGAAGTTTTCCAGAAGTTGGTACCTGGT  
GGCAAAGCGACTTTGGTATGAAGAAAGGAGATGTGGAGGGCAGCCAGTCTCAGGACGAAGGAGAAGGGA  
GTGGCGAGAGTGAGCGGGCTCTGGGTCACAGAGCAGTGTCCATCAGTTGACCAGTTCACAGGAGTTGG  
GATCAGGGTGTCAATTTACAGGGAAGCAAGGGGAGATGAGAGAAATGCAGCAGCTCTCAGGAGGACAGAAA  
TCTCTGGTAGCCCTTGTCTCATCTTTGCCATTCAGAAATGCGACCCTGCTCCTTTTTACCTGTTTGATG  
AGATCGACCAAGCTTTGGATGCTCAGCACAGAAAAGCCGTGTGAGATATGATTATGGAGCTAGCCGTGCA  
TGCCCAAGTTTATTACCACTACTTTCAGGCCTGAACTGCTTGAAGTCAAGTACAAAATCTATGGTGTAAAG  
TTCAGAAATAAGGTTAGTCACATTGATGTGATCACAGCAGAGATGGCCAAAGATTTGTAGAAGACGATA  
CCACGCATGGT

ACGCGTACGCGGCCGCTCGAG - GFP Tag - GTTTAA

Protein Sequence: >MG211814 representing NM\_007790  
 Red=Cloning site Green=Tags(s)

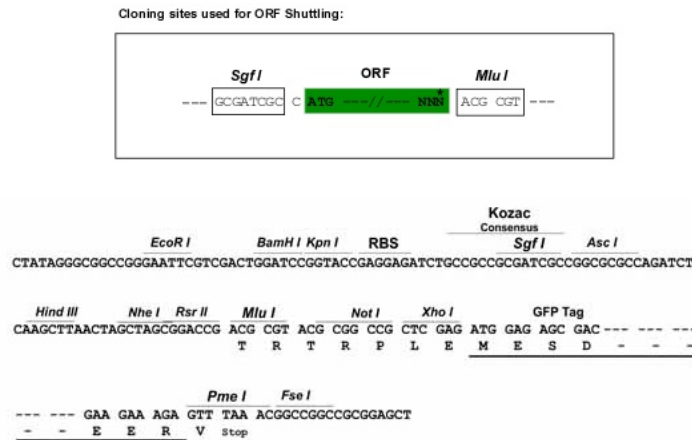
MYIKQVIIQGFRSYRDQTI VDPFSSKHNVIVGRNGSGKSNFFYAIQFVLSDEFSHLRPEQRLALLHEGTG  
 PRVISAFVEIIFDNSDNRLPIDKEEVSLRRVIGAKKDQYFLDKKMTKNDVMNLLSAGFSRSPYIYVK  
 QGKINQMATAPDSQRLKLLREVAGTRVYDERKEESI SLMKETEGKREKINELLKYIEERLHLEEEKEEL  
 AQYQKWDKMRRALEYTIYNQELNETRAKLDL SAKRETSGEKSRQLRDAQDARDKMEDIERQVRELKTK  
 ISAMKEEKEQLSAERQEIQRTKLEL KAKDLQDEL AGNSEQRKRLKERQKLEKIEEKQKELAEETPK  
 FNSVKEKEERGIARLAQATQERTDLYAKQGRGSQFTSKEERDKWIKKELKSLDQAINDKKRQIAAIAHKDL  
 EDTEANKEKNLEQYNKLDQDLNEVKARVEELDRKYVEVKNKKDELQSERNYLWREENAEQQAALAAKREDL  
 EKKQQLLRAATGKAILNGIDSINKVLEHFRRKGINQHVQNGYHGI VMNFECEPAFYTCVEVTAGNRLFY  
 HIVDSDEVSTKILMEFNKMNLPGEVTFPLNKL DVRTAYPE TNDIIPMISKLRYNPRFDKAFKHVFGKT  
 LICRSMEVSTQLARAFTMDCITLEGDQVSHRGAL TGGYYDTRKSRL ELQKDVRAEEELGELEAKLNENL  
 RRNIERINNEIDQLMNMQQIETQQRKFKASRDSIL SEMKMLKEKRQQSEKTFMPKQRSLSLEASLHAM  
 ESTRESLKAELGTDLLSQLSLEDQKRVDALNDEIRQLQ QENRQLLNERIKLEGIITRVETYL NENLRKRL  
 DQVEQELNELRETEGGTVLTATTSELEA INKRVKDTMARSEDL DNSIDKTEAGIKELQKSMERWKNMEKE  
 HMDAINHDTKELEKMTNRQGM LKKKEECMKKIREL GSLPQEA FEKYQTL SLKQLFRKLEQCNTLKKYS  
 HYNKALDQFVNFSEQKEKLIK RQEELDRGYKSI MELMNVLELRKYEA IQLTFKQVSKNFSEVFQKLVPG  
 GKATLVMKKGDEGSQSQDEGEGSGESERGSQS SVSPVDQFTGVGIRVSFTGKQGMREMQLSGGQK  
 SLVALALIFAIQKCDPAPFYL FDEIDQALDAQHRKAVSDMIMELAVHAQF ITTTFRPELLESADKFYGVK  
 FRNKVSHIDVITAEMAKDFVEDDTHG

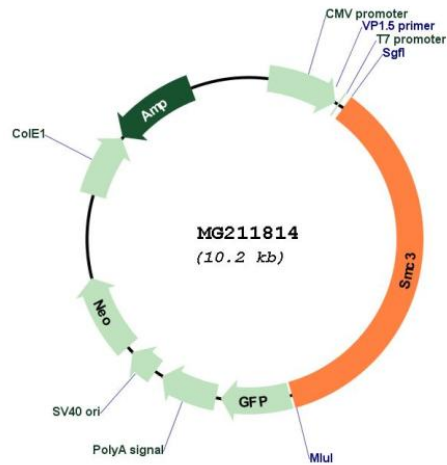
TRTRPLE - GFP Tag - V

Restriction Sites:

Sgfl-MluI

Cloning Scheme:



**Plasmid Map:**


**ACCN:** NM\_007790

**ORF Size:** 3651 bp

**OTI Disclaimer:** Due to the inherent nature of this plasmid, standard methods to replicate additional amounts of DNA in *E. coli* are highly likely to result in mutations and/or rearrangements. Therefore, OriGene does not guarantee the capability to replicate this plasmid DNA. Additional amounts of DNA can be purchased from OriGene with batch-specific, full-sequence verification at a reduced cost. Please contact our customer care team at [custsupport@origene.com](mailto:custsupport@origene.com) or by calling 301.340.3188 option 3 for pricing and delivery.

The molecular sequence of this clone aligns with the gene accession number as a point of reference only. However, individual transcript sequences of the same gene can differ through naturally occurring variations (e.g. polymorphisms), each with its own valid existence. This clone is substantially in agreement with the reference, but a complete review of all prevailing variants is recommended prior to use. [More info](#)

**OTI Annotation:** This clone was engineered to express the complete ORF with an expression tag. Expression varies depending on the nature of the gene.

**Components:** The ORF clone is ion-exchange column purified and shipped in a 2D barcoded Matrix tube containing 10ug of transfection-ready, dried plasmid DNA (reconstitute with 100 ul of water).

- Reconstitution Method:**
1. Centrifuge at 5,000xg for 5min.
  2. Carefully open the tube and add 100ul of sterile water to dissolve the DNA.
  3. Close the tube and incubate for 10 minutes at room temperature.
  4. Briefly vortex the tube and then do a quick spin (less than 5000xg) to concentrate the liquid at the bottom.
  5. Store the suspended plasmid at -20°C. The DNA is stable for at least one year from date of shipping when stored at -20°C.

RefSeq: [NM\\_007790.3](#), [NP\\_031816.2](#)

RefSeq Size: 4851 bp

RefSeq ORF: 3654 bp

Locus ID: 13006

UniProt ID: [Q9CW03](#)

Cytogenetics: 19 D2

**Gene Summary:** Central component of cohesin, a complex required for chromosome cohesion during the cell cycle. The cohesin complex may form a large proteinaceous ring within which sister chromatids can be trapped. At anaphase, the complex is cleaved and dissociates from chromatin, allowing sister chromatids to segregate. Cohesion is coupled to DNA replication and is involved in DNA repair. The cohesin complex plays also an important role in spindle pole assembly during mitosis and in chromosomes movement.[UniProtKB/Swiss-Prot Function]